

# EVO2®

MID PEAK - SLIP RATCHET - VENTILATED

PRODUCT CODE: AJF030-000-00

THE EVO2® OFFERS THE MOST ECONOMICAL TOP LEVEL PROTECTION

## TECHNICAL SPECIFICATION

### HEAD PROTECTION

### INSTRUCTIONS FOR USE

Fit helmet on head and fasten strap to ensure fit

For adequate protection this helmet must be worn with peak facing forward

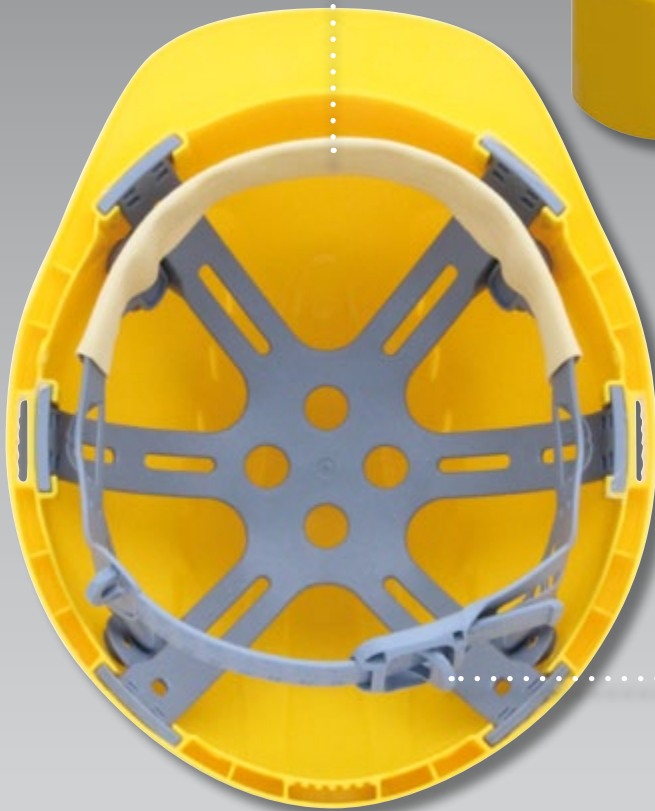
Ensure the helmet is adjusted to the size of the user's head

#### CHAMLON™ SWEATBAND:

Egyptian cotton core with porous PU coating for maximum sweat absorption. PH neutral, dermatologically tested

#### SHELL:

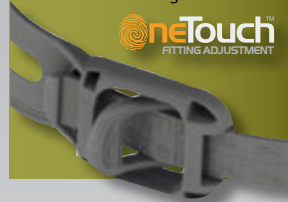
UV Stabilised High Density Polyethylene (HDPE)



#### SLIP RATCHET:

One Touch™ Slip Ratchet version of the EVO2® is so simple to fit that it can be adjusted with just one finger

**oneTouch**  
FITTING ADJUSTMENT



### CLEANING & MAINTENANCE

The unit may be cleaned with soap and warm water and dried with a soft cloth

The helmet should not be cleaned with chemical or abrasive cleaners

The helmet should be stored out of direct sunlight

The helmet should be stored away from chemicals and extremes of temperature

### CONFORMITY

Conforms to EN397, EN50365 & GOCT P 50460-92

Meets optional Molten Metal requirement

EC Certificate Number 0279, issued by BSI Product Certification

Low dome profile

Compatible with other JSP safety products

Available in a choice of colours

Company personalisation available by printing



MANUFACTURING FOR SAFETY  
WWW.JSP.CO.UK



UKSALES@JSP.CO.UK  
TEL: +44 (0)1993 826050



Issued 12/03/14, V6

# EVO2®

MID PEAK - SLIP RATCHET - VENTILATED

PRODUCT CODE: AJF030-000-\_\_00

THE EVO2® OFFERS THE MOST ECONOMICAL TOP LEVEL PROTECTION

## TECHNICAL SPECIFICATION

### HEAD PROTECTION



### DIMENSIONS OF OUTER PACKAGING

Quantity: 10

Weight: 3.8kg (Approx.)



HEIGHT:  
450mm

LENGTH:  
580mm

WIDTH:  
240mm

### HELMET FEATURES

EN STANDARD	EN397 EN50365	Yes Yes
PERFORMANCE	Impact Resistance Electrical Insulation	Yes 50 Joules EN50365 1000V
TEMPERATURE RESISTANCE	Low Temperature  Molten Metal (MM)	Yes: EN397 -30°C FOCT P 50460-92 -30°C Yes
SHELL MATERIAL	HDPE Recyclable UV Stabilised	Yes Yes Yes
HARNESS MATERIAL	HDPE LDPE	Yes Yes
OPTIONS	Universal Accessories Reflective CR2 option Ventilated Integrated Eyewear	Yes Yes Yes Yes
HARNESS SYSTEM OPTIONS	JSP 3D Slip Ratchet 6 pts	Yes Yes Yes
CHINSTRAP	4 pts	Yes
LOGO OPTIONS	Front Rear Side MOQ Logo Individual Name	Yes Yes Yes 10 Yes

### DIMENSIONS OF HELMET

Size: 530 - 640mm

Weight: 350g (Approx.)



### HELMET COLOURS

Insert the following two digit number in place of the dashes in the product code of your desired helmet



### LIMITATIONS OF USE

Protection will only be offered if the helmet is fitted correctly

Any helmet subjected to severe impact should be replaced immediately. Do not apply paint, solvents or adhesive labels except in accordance with instructions from the manufacturer

The harness, when in contact with the skin may cause allergic reactions to susceptible individuals. If this occurs leave the hazard area, remove the helmet and seek medical advice

The attention of users is also drawn to the dangers of modifying or removing any of the original component parts, other than as recommended by the manufacturer



MANUFACTURING FOR SAFETY  
WWW.JSP.CO.UK

UKSALES@JSP.CO.UK  
TEL: +44 (0)1993 826050



Issued 12/03/14, V6



