

Owner's Manual FIRE SAFE® brand steel safes For information on using your safe's lock(s), please see pages 2-5.
See back cover for Model and combination information.

كتيب المستخدم لخزائن حفظ الودائع الفولاذية المضادة للحريق FIRE SAFE® للحصول على معلومات حول كيفية استخدام أفعال خزنة الودائع. راجع الصفحات 6-9 راجع الغلاف الخلفي للحصول على معلومات عن الموديل والرقم التوافقي.

Gebruikershandleiding voor FIRE-SAFE® stalen brandkasten Voor informatie over het gebruik van het slot/de sloten, zie pagina 10-14. Zie de achteromslag voor informatie over het model en de combinatie.

Omistajan käsikirja FIRE SAFE®-merkkisille teräskassakaapeille Tietoja kassakaapin lukosta tai lukkojen käytöstä löydät sivuilta 15-18. Ja tietoja malleista ja numeroyhdistelmistä on takakannesta.

Manuel de l'utilisateur Coffres-forts de marque FIRE SAFE® en acier Pour plus d'informations sur l'utilisation de nos coffres forts, reportez-vous aux pages 19-23. Voir au dos de la couverture pour le type de modèle et des informations sur la combinaison.

Bedienungsanleitung für FIRE SAFE®-Stahlsafes Informationen zum Öffnen und Schließen des Safes finden Sie auf den Seiten 24-28. Auf der Rückseite der Bedienungsanleitung befinden sich Angaben zum Modell und zur Kombination.

Manual Bagi Pemilik lemari besi merek FIRE SAFE® Untuk informasi lebih lanjut tentang menggunakan kunci lemari besi Anda, harap membaca halaman 29-33. Lihat sampul belakang untuk membaca informasi tentang Model dan lainnya.

Manuale per l'utente delle casseforti ignifughe linea FIRE SAFE® Per informazioni sull'utilizzo delle casseforti vedere le pagine 34-38. Per informazioni sui modelli e sui codici vedere l'ultima pagina.

FIRE SAFE® 保险箱用户手册 有关如何使用保险箱锁的信息，请参见第 39-43 页。
参见封底可查看型号和组合信息。

Руководство пользователя FIRE SAFE® Стальные сейфы Сведения о замках сейфа на стр. 44-47.
Модель и код замка указаны на задней стороне обложки.

Manual del Usuario Cajas fuertes de acero marca FIRE SAFE® Para obtener información sobre el uso de la cerradura, o cerraduras, de su caja fuerte, consulte las páginas 48-52. Véase la contraportada para obtener información sobre el modelo y la combinación.

Användarhandbok för FIRE SAFE® stålkassaskåp Information om hur du använder skåpets lås finns på sidorna 53-56.
Uppgifter om modell och låskombination finns på omslaget baksida.

Kullanıcı Kılavuzu FIRE SAFE® marka çelik kasalar Kasa kilitlerinin kullanımı hakkında bilgi edinmek için bkz: sayfa 57-60.
Model ve kombinasyon bilgileri için kılavuzun arka kapağına bakın.

Thank you for purchasing this SentrySafe product.

2 Year limited warranty

This product (the "Product") is warranted to the original purchaser for two years (2) from the date of purchase to be free of structural and mechanical defects due to faulty materials or workmanship. If a structural or mechanical defect occurs during the warranty period, Sentry Group or its designee (hereafter "Sentry") will repair or replace the defective part(s) of the Product or Product, at its option, at no charge. THIS WARRANTY DOES NOT AFFECT YOUR STATUTORY RIGHTS UNDER THE LAWS OF THE COUNTRY WHERE YOU PURCHASED THE PRODUCT. IMPORTANT NOTE: PLEASE REFER TO (*) BELOW FOR THE PARTICULAR RULES APPLICABLE TO AUSTRALIA AND OTHER COUNTRIES.

Warranty Service

Warranty service may be obtained by contacting your local Sentry office or distributor with your name address, proof of purchase from carton (UPC Code), original sales receipt and a description of the problem. See Sentry Group office contact information noted on the back of this owner's manual. DO NOT SHIP YOUR DEFECTIVE PRODUCT BACK TO SENTRY.

Limitations Of Warranty

1. Except for damages caused by gross negligence or willful misconduct and, in any event, to the extent allowed by the applicable laws and rules on manufacturer's liability for defective products, Sentry's responsibility and the buyer's exclusive remedy under this warranty are limited to the repair or replacement of the defective part(s) of the Product or Product, at Sentry's option. In no event shall Sentry be liable for loss or damage due to external events such as fire, water, theft or vandalism or for any incidental or consequential damages to persons or property (including the contents of the Product) resulting from the breach of this or any other express or implied warranty applicable to the Product. IMPORTANT NOTE: THE ABOVE EXCLUSION AND LIMITATION DO NOT APPLY IN AUSTRALIA. PLEASE REFER TO (**) BELOW FOR THE PARTICULAR RULES APPLICABLE IN AUSTRALIA AND OTHER COUNTRIES.

2. Except as may be otherwise provided by applicable law, Sentry disclaims any and all other covenants and warranties, whether written or oral, express or implied, including, but not limited to, the implied warranties of merchantability and fitness for a particular purpose. The implied warranty applicable to this Product shall not exceed the standard two (2) year limited warranty. IMPORTANT NOTE: THE ABOVE EXCLUSION AND LIMITATION DO NOT APPLY IN AUSTRALIA. PLEASE REFER TO (***) BELOW FOR THE PARTICULAR RULES APPLICABLE IN AUSTRALIA AND OTHER COUNTRIES.

3. To the full extent permitted by law, Sentry is not responsible for damage, defects, or malfunction to the Product caused by shipment. The Product, which was packed with due care and reasonable handling, should be in good condition on arrival.

4. This Limited Warranty does not cover defects, damage, or malfunction caused by modification, alteration, repair or service of the Product by anyone other than Sentry or its designee, or caused by physical abuse to or misuse of the Product.

5. No Sentry agent, employee, representative, dealer or retailer has the authority to make or imply any representation, promise or agreement which in any way varies the terms of this Limited Warranty.

6. This Limited Warranty shall apply to new, first quality Products and shall not apply to factory seconds or previously-owned products, or products previously damaged by such events including, but not limited to, fire, flood, earthquake, etc.

All of the provisions of this Limited Warranty are separate and severable. If any provision is held invalid and unenforceable, such determination shall not affect the validity or enforceability of the other provisions. This Limited Warranty gives you specific legal rights, which may vary in accordance with the mandatory provisions of law of the country where you purchased the Product.

IF YOU PURCHASED THE PRODUCT IN ONE OF THE FOLLOWING COUNTRIES, THE FOLLOWING RULES APPLY:

(*)AUSTRALIA: IN ADDITION TO THE RIGHTS OBTAINED UNDER THIS LIMITED WARRANTY, YOU MAY HAVE ADDITIONAL RIGHTS AND REMEDIES IMPLIED BY APPLICABLE LAWS, SUCH AS THE TRADE PRACTICES ACT 1974. THE LIMITATIONS SET OUT IN THIS LIMITED WARRANTY IN NO WAY AFFECT YOUR STATUTORY RIGHTS UNDER ANY SUCH LAWS.

THE PHILIPPINES: You may choose between the repair of the defective part of the Product or Product or a refund of the purchase price. If you elect to have the purchase price refunded, the amount directly attributable to the use of the Product prior to the discovery of the defect shall be deducted. You may obtain warranty service by providing the required information and presenting either the proof of purchase from carton or the original sales receipt or the warranty card.

(**)AUSTRALIA: Replace Paragraph 1 with the following: Except for damages caused by gross negligence or willful misconduct, and, in any event, to the extent allowed by the applicable laws and rules on manufacturer's liability for defective products, Sentry's responsibility and the buyer's exclusive remedy under this Limited Warranty are limited to the repair or replacement of the defective part(s) of the Product or Product, at Sentry's option. In no event shall Sentry be liable for any incidental or consequential damages (including but not limited to loss or damage due to fire, water, theft or vandalism) to persons or property (including the contents of the Product) resulting from the breach of this Limited Warranty or any other express warranty applicable to the Product.

FRANCE: In the event that you are a consumer or a professional not acting in its field of specialty when purchasing the Product, you will in any case be entitled to the legal warranty of absence of hidden defects with respect to the Product.

THE PHILIPPINES: You may choose between the repair of the defective part of the Product or Product or a refund of the purchase price. If you elect to have the purchase price refunded, the amount directly attributable to the use of the Product prior to the discovery of the defect shall be deducted.

THE UNITED KINGDOM: Nothing in paragraph 1 or otherwise in this Limited Warranty shall exclude or in any way limit Sentry's liability to you for (i) death or personal injury caused by Sentry's negligence (including negligence as defined in s. 1 Unfair Contract Terms Act 1977), (ii) breach of terms regarding title implied by s. 12 Sale of Goods Act 1979, or (iii) any liability to the extent the same may not be excluded or limited as a matter of law.

(***)AUSTRALIA: Replace Paragraph 2 with the following: To the full extent allowed under law, Sentry disclaims any and all other covenants and warranties, whether written or oral, express or implied.

JAPAN: Sentry also disclaims the implied defect warranty under Article 570 of the Civil Code.

THE UNITED KINGDOM: Nothing in Paragraph 2 or otherwise in this Limited Warranty shall exclude or in any way limit Sentry's liability to you for (i) fraud, (ii) breach of terms implied by the Sale of Goods Act 1979 regarding title, the goods' correspondence with a description or sample, or their quality or fitness for any particular purpose, or (iii) any liability to the extent the same may not be excluded or limited as a matter of law.

UL-classified fire protection

Your SentrySafe Fire-Safe product is classified by Underwriters Laboratories, an independent testing organization, to pass one of the following rigorous standards of fire endurance protection:

- 2-Hour UL Fire Endurance Test
Subjected to temperatures up to 1850°F (1010°C) for 2 hours, the safe interior will remain below 350°F (177°C) to protect documents. (This enables your safe to withstand even high-temperature exposure, as the hottest part of a fire moves through a building.)
Or
- 1-hour UL Fire Endurance Test
1700°F (927°C) for a duration of one hour.
Plus
- UL Explosion Hazard Test
Subjected to flash fire in a 2000°F (1093°C) furnace for ½ hour, the safe will not explode or rupture.

UL Fire-Impact Test

1-Hour Models

After being heated to 1550°F (843°C), the safe is dropped 30 feet onto rubble, then cooled, inverted and reheated to 1550°F (843°C) for ½ hour. The safe remains intact and locked, with an interior temperature below 350°F (177°C).

2-Hour Models

After being heated to 1550°F (843°C), the safe is dropped 30 feet onto rubble, then cooled, inverted and reheated to 1638°F (892°C) for 45 minutes. The safe remains intact and locked, with an interior temperature below 350°F (177°C).

ETL verified fire claim

For models starting with: MS, MSW, DS, CS, OS, KS
ETL verified for 1 hour fire protection of CDs, DVDs, memory sticks and USB drives up to 1700°F

ETL Fire-Impact Test

After being heated to 1550°F (843°C), the safe is dropped 15 feet onto rubble, then cooled, inverted and reheated to 1550°F (843°C) for ½ hour. The safe remains intact and locked, with an interior temperature below 350°F (177°C).

For models starting with: MA, DA, CA, OA

ETL verified for 2 hour fire protection of CDs, DVDs, memory sticks and USB drives up to 1850°F

Water resistance protection

Some advanced models protect contents from water damage. The Sentry Group Quality Department has subjected these water resistant safes to the following conditions:

- tested for 15 minutes with up to 1,000 gallons of water spray
- tested in 6 inches of water for 1 hour.

To validate water resistant models, please call Customer Service at the appropriate contact number on the back cover.

NOTE: For the gasket to work effectively, the safe door must be closed with the handle fully horizontal. When you move the handle, the compression of the gasket will require slightly more force than you would use with a safe that does not have a gasket.

Instructions for floor mounting

This kit contains:

(2) lag screws, (2) washers, (2) masonry anchors (Fig. A)

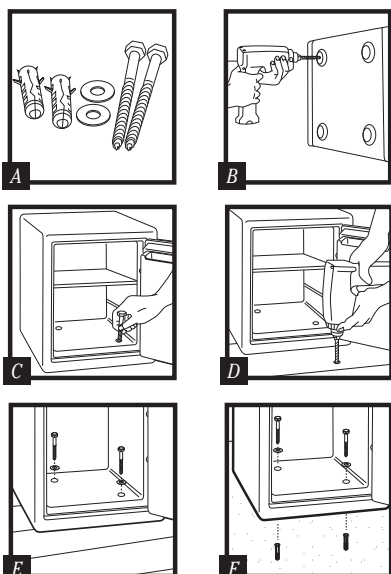
Tools needed for floor mounting: Drill, wrench, $\frac{7}{16}$ " (11.0 mm) drill bit, for wood anchoring: $\frac{9}{32}$ " (7.2 mm) drill bit, for masonry anchoring: $\frac{3}{8}$ " (9.50 mm) masonry drill bit.

Instructions:

1. Tip the safe onto its right side. (Door hinges horizontal with the floor.)
2. Unlock the safe and open the door.
3. Look on the bottom of the safe for two indentations in opposite corners. Using the $\frac{7}{16}$ " (11.0 mm) bit, drill a hole through each indentation perpendicular to the bottom of the safe. (Fig. B)
4. Close the door and tip the safe upright. Place it where desired and reopen the door.
5. Use a screw or drill bit to mark the floor through both holes. (Fig. C)
6. Move the safe aside to clear both marked spots for drilling.
7. Drill into the floor:
 - A. For wood: Using the $\frac{9}{32}$ " (7.2 mm) bit, drill a hole $2\frac{1}{2}$ " (64 mm) deep in each marked spot. (Fig. D)
 - B. For masonry: Using the $\frac{3}{8}$ " (9.50 mm) masonry bit, drill a hole $2\frac{1}{2}$ " (64 mm) deep in each marked spot. (Fig. D) Install a masonry anchor in each hole.
8. Replace the safe in the desired position, with the holes in the safe aligned with those in the floor.
9. Securing the safe:
 - A. For wood: Pass each lag screw through a washer, then through the safe and into a hole. Tighten with the wrench. (Fig. E)
 - B. For masonry: Pass each lag screw through a washer, then through the safe and into a masonry anchor. Tighten with the wrench. (Fig. F)

NOTE: Drill holes through feet only, not through the back or sides.

NOTE: Bolting/unbolting of the unit is at the consumers expense and discretion. Sentry Group is not responsible for any costs incurred if the unit is to be replaced.



Lost combination or keys

IMPORTANT: Please read the following instructions carefully. For your protection, new keys CAN, and combinations CANNOT, be issued by telephone request. To order replacement keys and/or combinations, it is essential that you e-mail or fax to the Sentry Customer Service at the appropriate contact address or number on the back cover. If you need assistance in preparing your order, or wish to purchase via credit card (Visa/Mastercard only), please call Sentry Customer Service at the appropriate contact number on the back cover.

Lost combination: First, find your safe's Model and Serial Number; then call your local Sentry retailer. The Serial Number is on the back cover, and is also printed on the small label beside the door hinge (outside).

Lost keys: To obtain replacement keys, please contact your local Sentry retailer with the safe Serial Number. The Serial Number is on the back cover, and is also printed on the small label beside the door hinge (outside).



WARNING

DO NOT store delicate items directly in your safe. SentrySafe products which offer fire protection have a patented insulation that has a high moisture content. In addition the SentrySafe advanced safes close airtight to offer water resistance, which may also cause moisture to accumulate inside your safe. The desiccant packet included in your safe during shipment, should be left in your safe. **DO NOT DISCARD IT.** It is intended to help absorb moisture which may accumulate inside your safe. Please open your unit periodically to avoid moisture accumulation.

If you choose to store delicate items such as jewelry with working parts, watches, stamps, or photos in your safe, we recommend putting them in an air-tight container, prior to placing them in the safe for storage.

NOTE: Sentry Group will not be responsible for any damage or loss of items placed in the unit due to moisture.

WARNING

DO NOT store pearls in this safe unit. In the event of a fire, potential damage to delicate pearls occurs at temperatures much lower than the 350°F interior performance measure which the UL classification performance standard indicated guarantees. Therefore, DO NOT store pearls in your SentrySafe product.

WARNING

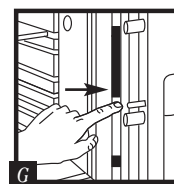
No computer disks, audio-visual media or photo negatives.

This product is not intended to protect computer floppy or 2-1/4" diskettes, cartridges and tapes, audio or video cassettes or photo negatives. For fire-resistant storage of these materials, ask your retailer for the SentrySafe Fire-Safe Media storage products.

IMPORTANT

Using a mechanical combination lock

NOTE: It may be required to push the bolt button which, in turn, will throw the bolts to a locked position while the door is open (Fig. G). Proceed to test your combination. The handle should be all the way UP, in the horizontal position before attempting to dial out safe. Your combination lock is now ready to use. You will find your safe's combination on the sticker on the back of the owner's manual. Depending upon the model you chose, you will have either a 3-number or 4-number combination.



Dual security combination and key lock safes

For added security, some safes have a dual locking system. Combination and key are required to unlock dual locking system locks. NOTE: The safe will lock with or without key.

To unlock and open
Insert the key in the lock and turn until the plunger pops out. Remove key.

Open first – test combination with door open!

3-NUMBER COMBINATION

See back cover of this manual for your combination.

NOTE: This combination cannot be changed.

Start at zero.



Turn dial right past ZERO 3 rotations. Stop at the first number of your combination after third rotation.



Turn the dial to left 2 rotations. Stop at second number on second rotation.



Turn dial to the right. Stop at third number on first rotation.

4-NUMBER COMBINATION

NOTE: Changing the combination voids your warranty. To reinstate your Limited 1-Year Warranty, (valid purchase dated receipt required) you must contact Sentry Customer Service at the appropriate contact number on the back cover to document your new combination.

Start at zero.



Turn dial to left 4 rotations past ZERO. Stop at the first number of your combination after the fourth rotation.



Turn the dial to the right 3 rotations. Stop at the second number on third rotation.



Turn the dial to the left 2 rotations. Stop at the third number on second rotation.



Turn the dial to the right. Stop at the last number on first rotation.

To close and lock

1. Close door.
2. Turn door handle to the horizontal position.
3. Depress the key lock.
4. Spin the combination dial for greatest security.

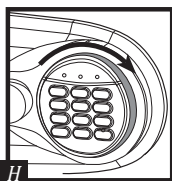
Electronic lock

Battery installation

Four alkaline AA batteries, (not included) are required.

NOTE: Non-alkaline and rechargeable batteries ARE NOT RECOMMENDED.

To install batteries: Turn the electric lock case to the right and remove. (Fig. H) Insert four new batteries as indicated, replace the electric lock case and turn to the left to reassemble.



Safes with an electronic and key lock

For added security, some models have a dual locking system. You **MUST** use both the electronic code and the key to open the safe.

To open your safe for the first time:

Install 4 AA batteries. (See instructions above.)

Turn the key to the right so that cylinder pops out. Enter the electronic lock code printed on the back cover. When the green PROCEED light comes on, you have four seconds to turn the handle down to open.

Open first – test combination with door open!

See back cover of this manual for your Factory Code.

NOTE: This combination cannot be changed.

Using the keypad



Caution!

Liquids can damage the keypad!



Caution!

Pen points or other sharp objects can puncture the keypad membrane!

Only a light touch is needed. A green PROCEED light and a single beep indicate that the keypad “felt” your touch. The lock allows 5 seconds for each key press. After 5 seconds, 3 beeps will sound and a red light will blink. Start over if this occurs.

Basic electronic lock



Access codes

There are three ways to unlock the safe.

1. Enter the preset 5-digit electronic lock combination. This code cannot be deleted and can always be used to open the safe - keep it secure!
2. A 5-digit User Code of your choice can be programmed and changed as needed.
3. For temporary access to the safe, you can program a 5-digit User PIN that can be erased or changed.

NOTE: All zeros is an invalid code.

Programming a 5-digit User Code

1. Press the Program key.
2. Enter the electronic lock combination. The green LED remains ON while you enter the 5-digit User Code of your choice. After 5 digits are entered the green LED turns OFF.

To enter a new User Code, repeat these steps. To erase the User Code, press the Program key and enter your electronic lock combination twice.

Programming a 5-digit User PIN

NOTE: You must program a User Code before programming a User PIN.

1. Press the Program key.
2. Press it a second time.
3. Enter your 5-digit User Code. The green LED remains ON.
4. Enter the 5-digit User PIN of your choice. After 5 digits are entered the green LED turns OFF.

(To enter a new User PIN, repeat these steps. To erase the User PIN, press Program twice, enter your User Code and then enter 00000.)

Open first – test combination with door open!

Test your new electronic lock combination several times with the door open, to make sure you have recorded it correctly. Your new electronic lock combination is ready to use.

Record your User Code and User PIN here

User Code: _____

User PIN: _____

To unlock safe:

Enter the preset 5-digit electronic lock combination, a User Code, or a User PIN. When the green LED lights you have 4 seconds to turn the handle and open the safe.

To lock safe:

Close the door and return the handle to the horizontal position.

Battery replacement

The yellow LED will light when the batteries need to be replaced. No codes are erased when old batteries are removed for replacement. See “Battery installation” in the “Electronic lock” section for installation instructions.

NOTE: If your safe does not appear to be working, please check batteries before calling Sentry Customer Service.

NOTE: It is recommended you replace the batteries after two years, or when the yellow LED remains on.

Delay mode

The lock automatically enters a two-minute delay mode after an invalid code has been entered three consecutive times. In this mode, the lock can not be activated and any key entry will generate an ERROR signal.

Advanced LCD electronic lock



For safes with an electronic lock and a key lock

For added security, some models have dual locking system (electronic lock plus key lock). You **MUST** use both the electronic code and the key to open the safe.

To open your safe for the first time:

Install 4 AA batteries. (See instructions under "Electronic lock".)

Turn the key to the right so that cylinder pops out. Enter the electronic lock code printed on the front cover, then press the Prog/Enter key. When the green PROCEED light comes on, you have four seconds to turn the handle down to open.

Using the keypad



Caution!
Liquids can damage the keypad!



Caution!
Pen points or other sharp objects can puncture the keypad membrane!

Only a light touch is needed. Press any button, the keypad lights up and a single beep will indicate that the keypad "felt" your touch. The lock allows 5 seconds for each key press. After 5 seconds, 3 beeps will sound and a red light will blink. Start over if this occurs.

Access codes

There are three ways to unlock and access the safe. Use one of the following, then press the Prog/Enter key:

1. Enter the preset 5-digit electronic lock combination. **This code cannot be deleted and can always be used to open the safe - keep it secure!**
2. A 4-8 digit Manager Code can be programmed and changed as needed.
3. For temporary access to the safe, you can program up to six 4-8 digit User Codes that can be erased or changed.

NOTE: All zeros is an invalid code.

Open first – test combination with door open!

Test your new LCD electronic lock codes several times with the door open to be sure you have entered them correctly.

NOTE: To return to the beginning when inputting a programmed Manager, User or Factory Code, press CLEAR. You may then re-enter the Code.

NOTE: To turn the beeper on or off, press the 0 key and then the Prog/Enter key. (0, Prog/Enter)

Programming the Manager Code

NOTE: One (1) Manager Code is allowed.

To add:

1. Press the Prog/Enter key, then enter the 5-digit electronic lock combination and then press the Prog/Enter key.
2. An empty lit box means no Manager Code is programmed. A boxed lighted * means a Manager Code is programmed.
3. Enter a 4 to 8 digit code and press the Prog/Enter key to finish programming the code into the unit.

To delete:

1. Press the Prog/Enter key, then enter the 5-digit electronic lock combination and then press the Prog/Enter key.
2. A boxed lighted * icon indicates there is a code programmed and can be deleted.
3. Press 0, 0, 0, 0, then the Prog/Enter key to delete the Manager Code. (0, 0, 0, 0, Prog/Enter)

NOTE: To return to the beginning when programming a Manager or User Code, wait 5 seconds and the lock will time-out. You may then start over.

Programming User Codes

NOTE: Six (6) user codes are allowed.

To add:

1. Press the Prog/Enter key 2 times, enter the Manager Code and then press the Prog/Enter key.
2. Use the << or >> to scroll between the lighted boxes. An empty box means it is available for a code entry; a boxed lighted * means it is being used.
3. Enter a 4 to 8 digit code in the selected position and press the Prog/Enter key to finish programming the code into the unit.

To delete:

1. Press the Prog/Enter key 2 times, enter the Manager Code and then press the Prog/Enter key.
2. Use the << or >> to scroll to the boxed lighted * icon to be removed.
3. Press 0, 0, 0, 0, then the Prog/Enter key to delete the selected user. (0, 0, 0, 0, Prog/Enter)

NOTE: To return to the beginning when programming a Manager or User Code, wait 5 seconds and the lock will time-out. You may then start over.

To unlock safe:

Enter the preset 5-digit electronic lock combination, a Manager Code or a User Code and press the Prog/Enter key. An asterisk will light each time a digit is entered. When the unlocked padlock icon appears you have 4 seconds to turn the handle and open the safe.

To lock safe:

Close the door and return the handle to the horizontal position.

Keep your Manager and User Codes secure

Maintain a record of your Manager and User Codes and store them in a secure location, other than in the safe.

Record your Manager and User Codes here

Manager Code: _____

User Code: _____

Battery replacement

The battery icon will light when the batteries need to be replaced. No codes are erased when old batteries are removed for replacement. See "Battery installation" in the "Electronic lock" section for installation instructions.

NOTE: If your safe does not appear to be working, please check batteries before calling Sentry Customer Service.

Icon identification



ERR (Error) indicates one of the following:

1. You have pressed Program key out of sequence.
2. You have entered an invalid code.
3. You have let 5 seconds elapse between key presses.

PRG (Program)

Lights after pressing the Program key and stays lit while programming a Manager or User Code.

* (Asterisk) indicates one of the following:

1. A number key has been pressed.
2. In Program mode, it signals a programmed code location.

Boxes

Light during programming and indicate code locations.

- An empty lit box means no code is programmed.
- A boxed lighted * means a code is programmed.

Padlock

Lights after three consecutive invalid codes are input and stays lit during the 2-minute delay mode.

Unlocked Lock

Lights when a valid code is entered. Indicates that the safe is unlocked and the door can be opened.

Battery

Lights when batteries are low indicating that the batteries need to be replaced soon.

Horn

Lights when the beeper is on.

Delay mode

The lock automatically enters a two-minute delay mode after an invalid code has been entered three consecutive times. In this mode, the lock can not be activated and the PADLOCKED icon lights.