

# TITAN®



## INSTRUCTIONS AND SAFETY MANUAL

87557-10

# 20L 1400W WET/DRY VACUUM CLEANER

# TITAN®

**Congratulations on your purchase of a TITAN wet/dry vac from Kingfisher International Products Limited. We want you to continue getting the best performance from it so this handbook includes information on safety, handling and care. Please retain this handbook in case you need to refer to any of the information in the future.**

**Your TITAN wet/dry vac comes with a 24-month guarantee, so should it develop a fault within this period contact your retailer.**

## **WARRANTY**

This product is guaranteed for 2 years from the date of purchase.

The warranty covers device breakdown and malfunctions when the device is used in compliance with the manner intended and the instructions for use contained in the manual.

To be covered by the warranty, proof of purchase is required (till receipt or invoice) and the product must be complete.

The warranty does not cover wear and tear through normal use, lack of maintenance, negligence, immersion or inappropriate use (impact damage, non-respect for electrical supply recommendations, storage, usage conditions, etc).

Also excluded from the warranty are harmful consequences due to dismantling or modifying the device.

# Safety instructions

## GETTING TO KNOW YOUR MACHINE

Read this manual carefully, taking note of all the recommended safety precautions (WARNINGS) before, during, and after use. Keep your machine in good working condition. Familiarize yourself with the machine's controls before turning it on. And, above all, make sure you know how to turn it off in case of an emergency. Keep this manual and any other documentation that came with your machine in a safe place for future reference.

## UNPACKING THE VACUUM CLEANER

When you open the packaging, make sure that the vacuum cleaner is not damaged. Remove the vacuum cleaner from its packaging. Verify that the standard accessories are included. Do not discard the protective packaging. Make sure that the guarantee and users manual are included.

This appliance can be used by children aged from 8 years and above and persons with reduced physical, sensory or mental capabilities or lack of experience and knowledge if they have been given supervision or instruction concerning use of the appliance in a safe way and understand the hazards involved. Children shall not play with the appliance. Cleaning and user maintenance shall not be made by children without supervision.

If the supply cord is damaged, it must be replaced by the manufacturer, its service agent or similarly qualified person in order to avoid a hazard.

The plug must be removed from the socket-outlet before cleaning or maintaining the appliance.

## TO BEGIN USING YOUR MACHINE SAFELY:

1. Keep your work area clean: Cluttered work areas and workbenches are a source of injury.
2. The vacuum cleaner should be properly assembled before use.
3. Use only extension cords approved for outdoor use (when the vacuum is used outside) and make sure that they are always in good condition.
4. Protect the electric cables and, in particular, make sure that they are not crushed, pulled, or damaged by edges, sharp pieces, or moving parts; or damaged by corrosive liquids.
5. **WARNING!** Do not force the tool to work too hard. It will work better and be safer at the speed it was designed for.

**20L 1400W WET/DRY VACUUM CLEANER**

6. **WARNING!** Do not use a damaged extension cord. Do not make any permanent or temporary repairs to the cable itself.
7. **WARNING!** Do not use a vacuum cleaner that has a damaged electric cord. Have a new cable installed by an authorised service center.
8. Do not attach anything else to the socket, electric cords, or extension cord.
9. Use the correct tools: Do not force small tools to do the work normally done with large tools. Do not use tools for work they are not intended to perform.
10. Before plugging your vacuum cleaner into the electrical outlet, make sure that the voltage and the outlet requirements match what is indicated on the label next to the cord.
11. Dress appropriately: Do not wear loose fitting clothing or jewelry. They could become caught in the moving parts. Rubber gloves and antiskid shoes are recommended for outdoor work. Wear a protective cap to keep long hair protected.
12. Do not pull the device by the cord.
13. Your machine should always be turned off before unplugging it from the outlet or the extension cord.
14. Before leaving the device unsupervised (even for a brief time) turn it off and unplug it from the electrical outlet. This should also be done if there is a loss of power.
15. Do not underestimate its power. Always maintain a balanced and stable stance.
16. Keep children and pets away from the machine. When the machine is operating, everyone should stay at a safe distance.
17. The device should not be used by children or by persons who are not familiar with the device or who have not read this instruction manual.
18. The user of the device is responsible for the safety of others while using it.
19. The vacuum should only be used for its intended purposes.
20. Before performing any maintenance, adjustment or cleaning procedures on the vacuum cleaner, turn it off, unplug it from the electrical outlet, and wait for the motor to stop.
21. Be very careful when checking, cleaning, or performing maintenance on the device and wear thick work gloves to protect your hands.
22. Neither the security devices nor the electric cords should be modified or removed from the machine.
23. When using the machine, it should be kept steady and on a stable surface or supported by the body.
24. Only work in full daylight or with appropriate artificial light.
25. We recommend using some type of hearing protection for your ears.
26. If the machine vibrates abnormally, stop the motor and look for the cause immediately. Vibrations usually mean a problem.
27. The vacuum cleaner should be properly checked before each use. Do not use a machine that is not in perfect condition. If you notice a problem that could constitute a danger to the user, have the machine repaired before using it.
28. For safety reasons, replace worn or damaged parts. Use only manufacturer approved replacement parts. Parts from sources other than the manufacturer may not fit properly or may be dangerous or cause injuries. The power cord can only be replaced by specialized customer service centers.
29. Only use the vacuum cleaner in areas that are dry and protected from bad weather. Do not use it outside when it is raining.
30. Store the vacuum in a dry place, out of the reach of children.
31. Do not leave the power cord lying around once clean up is done; someone could trip.

32. Take care when emptying extremely heavy tanks.
33. To avoid spontaneous combustion, empty the tank after every use.
34. Do not use this machine to vacuum up flammable or combustible liquids, such as gasoline, photocopier powder, or volatile substances; and do not use the machine in areas where these liquids are present. Do not vacuum up acids.
35. Do not vacuum up any materials that are toxic, cancer causing, combustible, or any other dangerous materials, such as asbestos, asbestos dust, arsenic, barium, beryllium, lead, pesticides, or any other substances hazardous to your health.
36. Extreme caution should be used when vacuuming up wood or charcoal ashes, soot, cement, plaster, or plasterboard dust. These particles are extremely fine and can pass through the filters affecting the motor's performance or be blown into the air. If necessary, you may need a more efficient filter.
37. Do not vacuum up anything that is burning or smoldering, such as cigarettes, cigarette butts, matches, or hot ashes.
38. Never vacuum up salt water; it may destroy the motor.

### CAUTION !

In order to avoid electric shock, do not expose the device to rain. Store it inside.

Read the owner's manual and the safety instructions before using the device in order to avoid injury or damage to property: Do not vacuum up any materials that are flammable, combustible, or hot. Do not use this device near explosive liquids or fumes because electric devices generate arcs or sparks that may cause a fire or explosion. Do not use this device in a petrol station or in an area where petrol is stored or distributed. In order to avoid health risks from fumes or dust, do not vacuum up toxic material, carcinogens, or other dangerous materials such as asbestos, lead, pesticides, or other materials hazardous to your health.

### SYMBOLS



**WARNING** – To reduce the risk of injury, user must read instruction manual.



Double insulated for additional protection.



Conforms to relevant safety standards.

**IPX4** Degree of protection provided by enclosure.

yyWxx: Manufacturing code. "yy" - Year of production, "W" - Week of production "xx".

### ENVIRONMENT



This product is marked with the recycling symbol for electrical and electronic equipment waste. This means that this product should not be disposed of with household waste, but it should be taken care of by a selective collection system in accordance with European directive 2002/96/CE. It will then be recycled or dismantled in order to reduce the impact on the environment; electrical and electronic equipment are potentially dangerous to the environment and the health of human beings due to the presence of dangerous substances. For further information, you can contact your local or regional government.

# 20L 1400W WET/DRY VACUUM CLEANER

# Technical data

Power .....	1100W(1400W Max.)
Supply Voltage .....	220-240V~50Hz
Protection .....	IPX4
Tank capacity .....	20 Litres
Tank construction material .....	Stainless Steel
Vacuum Pressure (kPa) .....	20
Weight (kg) .....	7,2

This tool is double insulated. There are two independent barriers of insulation to protect you from the possibility of electric shock.

## ACCESSORIES

The vacuum cleaner is supplied with the following accessories:

- 1 Hose
- 3 Plastic extension tubes
- 1 Round Brush
- 1 Crevice tool
- 1 Selector nozzle
- 1 Foam sleeve (Fitted on Tool – For wet use only)
- 1 Dust collection bag (for dry cleaning only)
- 1 Cartridge filter

## DESCRIPTION



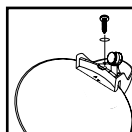
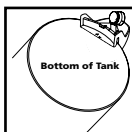
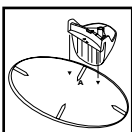
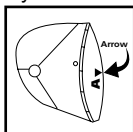
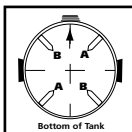
- 1. On/Off switch
- 2. Carrying handle
- 3. Vacuum port
- 4. Tank carrying handle
- 5. Castor foot
- 6. Castor
- 7. Tank locking clamp
- 8. Power cord storage
- 9. Vacuum cleaner tank
- 10. Motor Assembly

# Getting started

**WARNING:** Always ensure that the plug is disconnected from power source, the tool is switched off before making any adjustments or maintenance procedures. Install the appropriate filter before placing the motor assembly back on the tank. For more information on installing your foam sleeve, refer to Operation. Remove the vacuum cleaner and all of the accessories from the packaging. Open the locking clamps with your thumbs and remove the motor assembly from the tank. Then, remove the accessories from the tank. With the electric cord disconnected from the outlet, and the motor assembly removed from the tank, place the tank upside down so that the base is facing upwards. Assemble the feet and the castors according to the following instructions for your model.

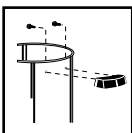
## CASTOR SYSTEM ASSEMBLY

1. Looking at the bottom of the tank with the vacuum port at the 12 o'clock position use a pencil or felt tip pen to mark lines marked with an 'A' at approximately the 1:30 and 7:30 positions, then a 'B' at the 4:30 and 10:30 positions as shown.
2. If the castor feet came bound together, remove the straps and separate them.
3. Align the castor foot marked A with the arrow on the foot.
4. With the arrow on the template also marked A.
5. Place the groove on the foot on the edge of the tank and press until the castor foot is tight against the base of the tank.
6. Secure the foot using the screws and washers provided.
7. Repeat with feet marked B.
8. Place the motor assembly back on the tank.

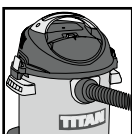


## SIDE TANK HANDLE ASSEMBLY

Attach side handles to tank with screws provided.



Attach the hose to the vacuum port located on the tank.



The extension tubes slide one inside the other. Twist the extension tubes to lock them in place. Attach the extension tubes to the accessory end of the hose.



Install the cleaning accessories (as needed) onto the end of the extension tubes.

# 20L 1400W WET/DRY VACUUM CLEANER



Insert the power cord plug into a wall socket. You are now ready to use your vacuum cleaner.

## Operation

**WARNING :** If the vacuum cleaner accidentally tips over, the shut-off float mechanism may cover the joint and stop the suction. If this happens, simply stand the vacuum upright and turn it off until the float returns to its normal position.

### VACUUMING DRY MATERIALS

In order to ensure proper filtering when vacuuming dust and dry material the foam sleeve needs removing and the cartridge filter needs to be put on in its place. The foam sleeve is only to be used when vacuuming liquids.

**NOTE:** NEVER USE A VACUUM WITHOUT THE FILTER!

### INSTALLATION AND CLEANING

#### Foam Sleeve – For use during wet applications

**WARNING:** Always ensure that the plug is disconnected from power source, the tool is switched off before making any adjustments or maintenance procedures. Once the motor assembly is upside down, slide the foam sleeve down over the cage. Keep sliding it down until it completely covers the cage.



The foam sleeve should be cleaned regularly as described in the following steps:

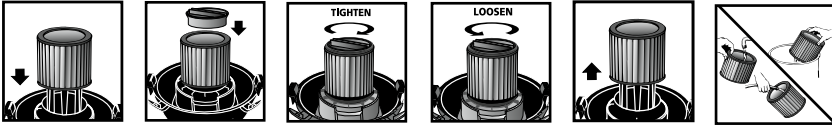
1. Unplug the power cord from the electrical outlet before removing the motor assembly. Turn the motor assembly over. Slide the foam sleeve toward the top of the cage to remove.
2. Shake the foam sleeve up and down quickly.
3. Submerge the foam sleeve in water for one or two minutes, then rinse it from the inside out. Systematic cleaning with water is not necessary, it depends on the condition of the foam sleeve.
4. Gently wring out the water, wipe it with a clean cloth, and let it dry. The foam sleeve is now ready to be reinstalled over the cage.

#### Cartridge Filter – For dry applications

Use the cartridge filter in position over the lid cage for most general dry material pick up.

1. With the tank cover in an upside down position, slide the cartridge filter down over the lid cage, pushing until the filter seals against the cover.
2. Place filter retainer into the top of the cartridge filter, hold the tank cover with one hand, turn the handle on the filter retainer clockwise to tighten, locking the filter into place.
3. To remove the filter for cleaning, again hold the tank cover and turn the filter retainer counter-clockwise to loosen and remove, slide the cartridge filter off the lid cage.
4. To clean the cartridge filter shake or brush off excess dirt or rinse (from the inside of the filter) with water, dry completely (approximately 24 hours) and reinstall. **NOTE:** If the filter has been used for wet pick up, it must be cleaned and dried before using for dry pick up.

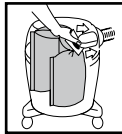




## DUST COLLECTION BAG

Fine dust, such as dust from cement, soot and plaster are too fine to be used with only the foam sleeve and risk getting into the motor and damaging it, thereby, nullifying the vacuum cleaner's guarantee. Therefore always use a dust collection bag when cleaning these types of materials.

1. Unplug the vacuum from the electrical outlet and remove the motor assembly from the tank.
2. Hold the cardboard collar tightly and slide the rubber protective element as far as possible onto the intake port.
3. When everything is in place, unfold the bag out and position it around the inside walls of the tank.



## VACUUMING UP WATER AND LIQUIDS

Remove all dirt and debris from the tank. A foam sleeve must be used to vacuum up wet debris.

- Unplug the power cord from the wall outlet before removing the motor assembly from the tank. Turn the motor over.
- Remove the dust collection bag and install the foam sleeve as described previously in Operation Section.

## START VACUUMING

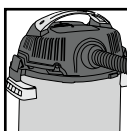
The vacuum cleaner is equipped with an automatic shut-off system that works when you vacuum up liquids. When the liquid reaches a certain level in the tank, an internal float closes against a joint which cuts off the motor intake and suction.

1. Turn off the vacuum cleaner.
2. Unplug the vacuum cleaner from the power source.
3. Raise the hose so that it drains into the tank.
4. Remove the motor assembly from the tank.
5. Be careful when emptying heavy tanks. Drain the tank into an appropriate drain. Place the motor assembly back on the tank. Engage the locking clamps.

## BLOWER FEATURE

This vacuum can be used as a powerful blower. To use your unit as a blower insert hose end into blower port on rear of unit. Clear hose of any obstructions before attaching to blower port. Caution should be used when using as a blower due to the powerful force of air when using certain attachments.

**WARNING :** ALWAYS WEAR EYE PROTECTION TO PREVENT DEBRIS FROM BEING BLOWN OR RICOCHETING INTO THE EYES OR FACE WHICH CAN RESULT IN SERIOUS INJURY.



# 20L 1400W WET/DRY VACUUM CLEANER

# Maintenance and Repair

The vacuum cleaner does not require lubrication or supplementary maintenance. Before storing the vacuum cleaner, always empty and clean the tank. Never leave any liquids standing in the tank for an extended period of time. Clean the foam sleeve in order to avoid clogging from debris. Never use water or chemical cleaning products with detergent to clean the vacuum cleaner. Use a dry cloth. If the supply cord needs replacing, the task must be carried out by the manufacturer, the manufacturer's agent, or an authorised service centre in order to avoid a safety hazard.

## Troubleshooting

PROBLEM	POSSIBLE CAUSES	SOLUTIONS
Missing Parts/Accessories	1. They are wrapped up in the tank.	1. Check the tank
The vacuum cleaner does not start	1. No power at the outlet. 2. Not plugged in correctly. 3. The power cord is cut. 4. On/Off switch defective 5. Defective Motor.	1. Check the power. 2. Unplug/insert the plug into the outlet again. 3. Have it replaced by an Authorised Customer Service Center. 4. Have it repaired by an Authorised Customer Service Center. 5. Have it repaired by an Authorised Customer Service Center.
Dust coming out of the exhaust port	1. The filter is not installed or not installed correctly. 2. The filter is damaged. 3. The filter is clogged or the dust is too fine. 4. The filter doesn't work.	1. Install the filter correctly. 2. Replace the filter. 3. Use a more efficient filter. 4. Clean or replace the filter.
Loss of suction	1. The flexible hose fitting is loose. 2. Filter clogged. 3. Tank or bag full. 4. Hole in the hose. 5. Hose or accessory clogged.	1. Tighten the fitting. 2. Clean or replace the filter. 3. Empty or replace them. 4. Replace the hose. 5. Check and unclog as necessary.
Static Shock	1. Dry environment. 2. Air's relative humidity too low.	1. Increase humidity. (Where possible, use a portable or stationary humidifier.) 2. This is temporary and does not affect the use of the vacuum cleaner.
Mist in exhaust air	1. The filter is saturated.	1. Clean or replace the filter.

# TITAN®

## Declaration of Conformity

We, Importer

**Kingfisher International Products Limited**  
**3 Sheldon Square London W2 6PX United Kingdom**

Declare that the product  
**20L 1400W WET/DRY VACUUM CLEANER**  
**TTB351VAC**

Complies with the essential health and safety requirements of the following directive:

EC Low Voltage Directive **2014/35/EU**

EC Electromagnetic Compatibility Directive **2014/30/EU**

**2002/95/EC** Restrictions of the Use of Certain Hazardous Substances in Electrical and Electronic Equipment  
Directive RoHS **2011/65/EU**

Standards and technical specifications referred to:

**EN 60335-1:2012+A11:2014+AC:2014**  
**EN 60335-2-2:2010+A11:2012+A1:2013**  
**EN 62233:2008**  
**EN 55014-1:2006+A1:2009+A2:2011**  
**EN 61000-3-2:2014**  
**EN 61000-3-3:2013**  
**EN 55014-2:2015**

Authorized Signatory and technical file holder

Signed for and on behalf of:

Kingfisher International Products Limited

3 Sheldon Square

London W2 6PX

United Kingdom

Geoffrey Lavielle

Deputy Range Director

on: 28/11/2017



# 20L 1400W WET/DRY VACUUM CLEANER