

FLUIDMASTER 400UK BOTTOM INLET VALVE INSTALLATION INSTRUCTIONS FOR TOILET CISTERN

WARNING: Fluidmaster shall not be responsible or liable for any failure of, or damage to, this plumbing product caused by use of chlorine (bleach) cleaners or related products added to the toilet cistern. Use of such products will void the warranty and may result in product failure, possibly causing property damage. Do not overtighten plastic nuts.

TO GET THE BEST RESULTS FROM YOUR FLUIDMASTER VALVE, PLEASE READ THESE INSTRUCTIONS CAREFULLY.

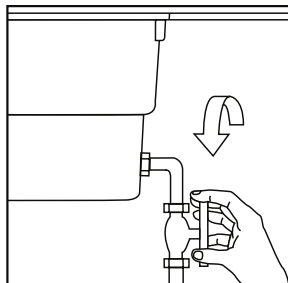
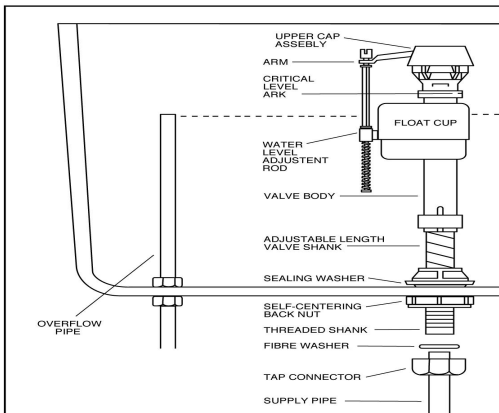
NOTE: SAVE INSTRUCTION SHEET FOR FUTURE REFERENCE CONCERNING THIS VALVE'S OPERATION AND MAINTENANCE.

IMPORTANT: DO NOT use plumber's putty to seal this fitting.

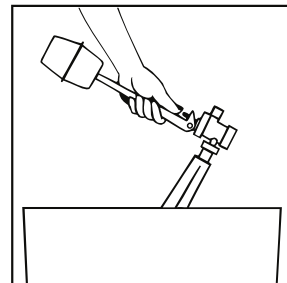
For more information in the U.K. contact:

Fluidmaster UK
One Harbour Road
Portishead, Bristol
BS20 7BL

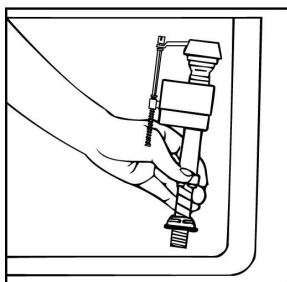
Tel: 01275 84 88 43
FAX: 01275 81 74 37
EMAIL: sales@fluidmasterUK.com
WEB: www.fluidmasterUK.com



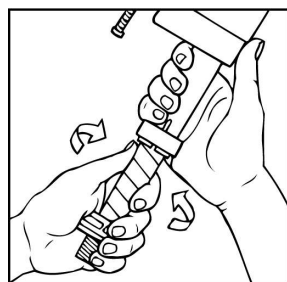
1. Turn off water supply to toilet cistern at storage tank in loft or isolator valve if mains fed.



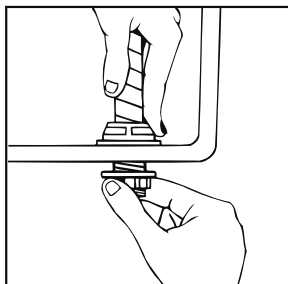
2. Disconnect pipe work and remove old valve from toilet cistern



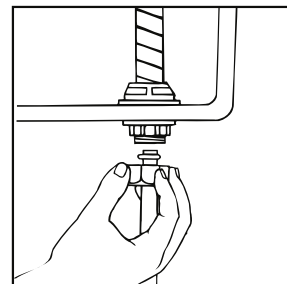
3. Place sealing washer on threaded shank of valve. Position valve in toilet cistern, passing threaded shank through hole in cistern to determine if valve height needs adjusting.



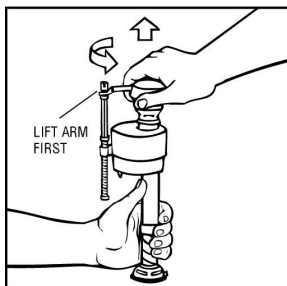
4. The Fluidmaster 400UK valve is adjustable in height from 225mm (9 inches) to 350mm (14 inches). To adjust height of valve, remove from toilet cistern and twist threaded shank in or out of valve body. A clicking noise will be heard on some models. This is normal. The valve height should be adjusted so that the critical level mark on the valve body is located at least 25mm (1 inch) above the overflow pipe in the cistern.



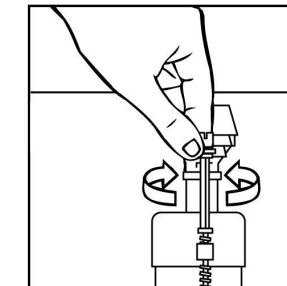
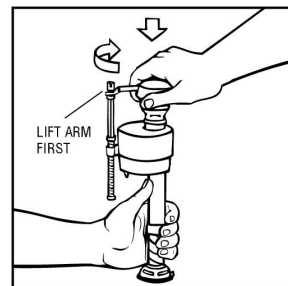
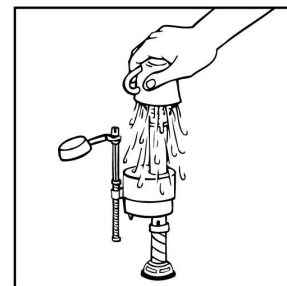
5. Install valve inside cistern. Start to thread back nut onto threaded shank so the shank protrudes through the cistern enough to enable tap connector to fit neatly. Do not tighten back nut at this stage.



6. When position is correct and before tightening back nut, reconnect water supply to valve to make sure fibre washer is sealed correctly. Tighten tap connector to fit neatly. Do not tighten back nut 1/4 turn past hand tight with spanner (DO NOT OVERTIGHTEN). Now tighten back nut with spanner 1/4 turn past hand tight (DO NOT OVERTIGHTEN). Turn on main water supply.



7. IMPORTANT: ALWAYS CLEAR DEBRIS FROM WATER LINE TO COMPLETE INSTALLATION. Shut off water supply to cistern. Remove VALVE TOP by lifting arm and rotating TOP 1/8 turn anti-clockwise, pressing down slightly on cap. While holding a container over the uncapped VALVE to prevent splashing, turn water supply on and off to clear debris that may be in supply line. Turn off water supply and replace TOP by engaging lugs and rotating 1/8 turn clockwise. MAKE CERTAIN TOP IS TURNED TO THE LOCKED POSITION. VALVE MAY NOT TURN ON IF TOP IS NOT FULLY TO THE LOCKED POSITION. Turn off water supply.

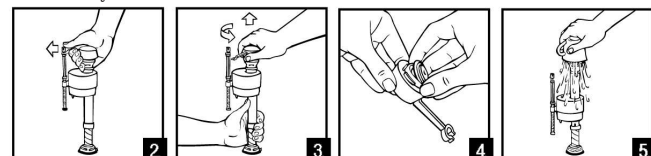


8. Adjust the water to the desired level by turning the water level adjustment rod and moving float cup up or down. Water should be set to water line on cistern.

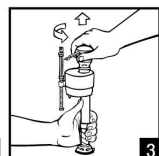
GUARANTEE:
This Fluidmaster product is guaranteed to be free from defective materials and workmanship for a period of one year. Units returned to Fluidmaster, USA, or Fluidmaster UK will be replaced without charge.

Always use quality Fluidmaster repair parts when maintaining your Fluidmaster products. Fluidmaster shall not be responsible or liable for any damages caused by products used in Fluidmaster valves that were not manufactured by Fluidmaster, Inc.

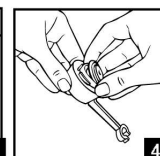
TROUBLESHOOTING - SEAL REPLACEMENT: If valve won't turn on or shut off or refill of cistern water is slow after valve has been in use for some time, a replacement seal may be needed. Ask your dealer for Model 242MP071 and install as follows:



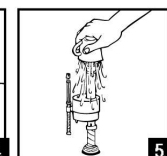
1. Turn off water supply in Figure 1 of instructions.



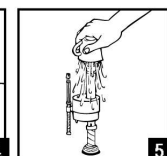
2. Remove water level adjustment rod from upper cap assembly as shown.



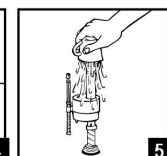
3. Remove upper cap assembly by lifting arm and rotating 1/8 anti-clockwise, pressing down slightly on cap.



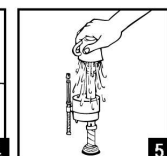
4. Replace seal.



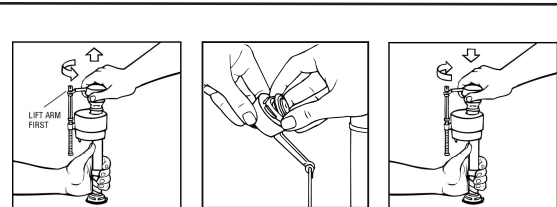
5. Hold a cup over the uncapped valve (to prevent splashing), and turn water supply on and off to clear debris in supply.



6. Refit upper cap assembly. Make sure assembly is fully turned clockwise to the locked position or valve will not turn on. Reattach water level adjustment rod to upper assembly by snapping back in place.



7. Turn on water supply as before.



1. Turn off water supply as in Figure 1 of instructions.

2. Remove upper cap assembly by lifting arm and rotating 1/8 anti-clockwise.

3. Replace seal and refit upper cap assembly. Make sure upper assembly is fully turned clockwise to the stop.

4. Turn on water supply as before.

Dual flush operation

How the dual flush operation for this siphon works:

The full flush volume is achieved by flushing the WC in the normal fashion of fully depressing the lever and immediately releasing once the flush has started.

The short flush volume is achieved by fully depressing the handle in the normal fashion and holding the handle in the down position until the flushing cycle has finished.

Opella Dual Flush Siphon

Full Flush: Depress and let go.

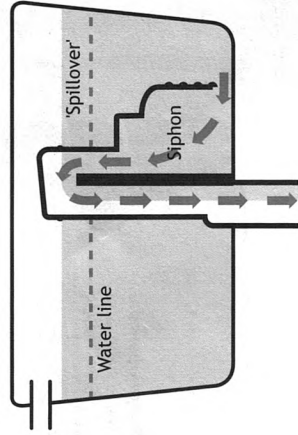
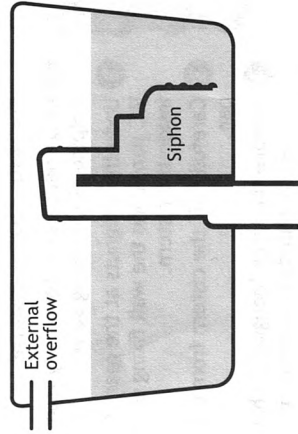
Short Flush: Depress and hold till flush has completed.

Dual Flush Label

High Level Cisterns: To appear on or near the lower edge of the front of the cistern shell.

Low Level and Close Coupled Cisterns: To appear on the upper half of the front of the cistern shell.

Internal Overflow



If in the unlikely event that your filling valve fails open, all Opella siphons feature an internal overflow which will be able to cope with upto 35l/min of excess water.

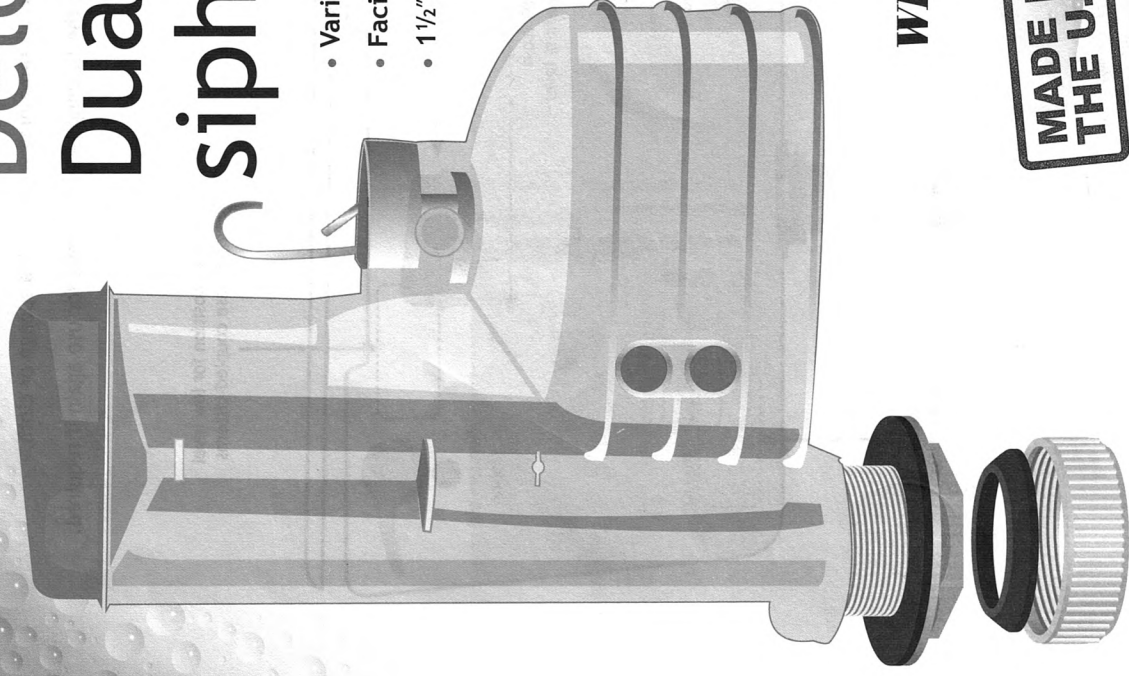
As the water level rises so will the level of water within the siphon, until it reaches the 'spillover' point. At this point the water within the syphon will cascade down the down tube and into the pan preventing any further increase in the height of the water within in the cistern.

When choosing an Opella syphon please make sure the bottom of the coloured cap (the 'Spillover' point, point P) is lower than any existing exit point within the cistern, i.e lever handle / side lever / side inlet internal overflow and cistern rim.

features • fitting instructions

Delchem Dual flush siphon

- Variable flushing volumes
- Facilitates internal overflow
- 1½" BSP outlet



WRAS
Approved

MADE IN
THE U.K.

Opella
plumbing innovations

Opella Limited

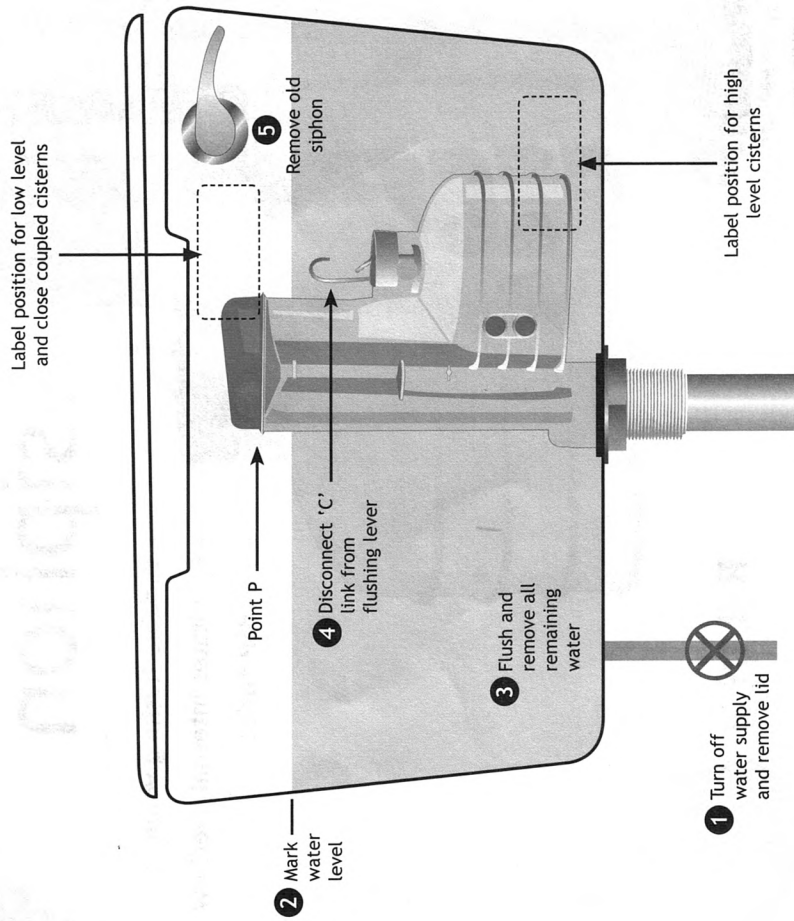
Twyford Road, Rotherwas Industrial Estate, HERFORD HR2 6JR, England.

t: +44 (0) 1432 357331 f: +44 (0) 1432 264014 w: www.opella.co.uk e: sales@opella.co.uk

STAGE 1

Pre-installation

- 1 Turn off water supply to cistern and remove cistern lid.
- 2 While still full, mark the normal water level on the inside of the cistern.
- 3 Flush the cistern and remove all remaining water with a sponge or cloth.
- 4 Disconnect the 'C' link from the flushing lever and save for use again if required.
- 5 Remove old siphon.



Note Ensure that point 'P' on the new siphon sits below the lowest overflow point of the cistern including all apertures.

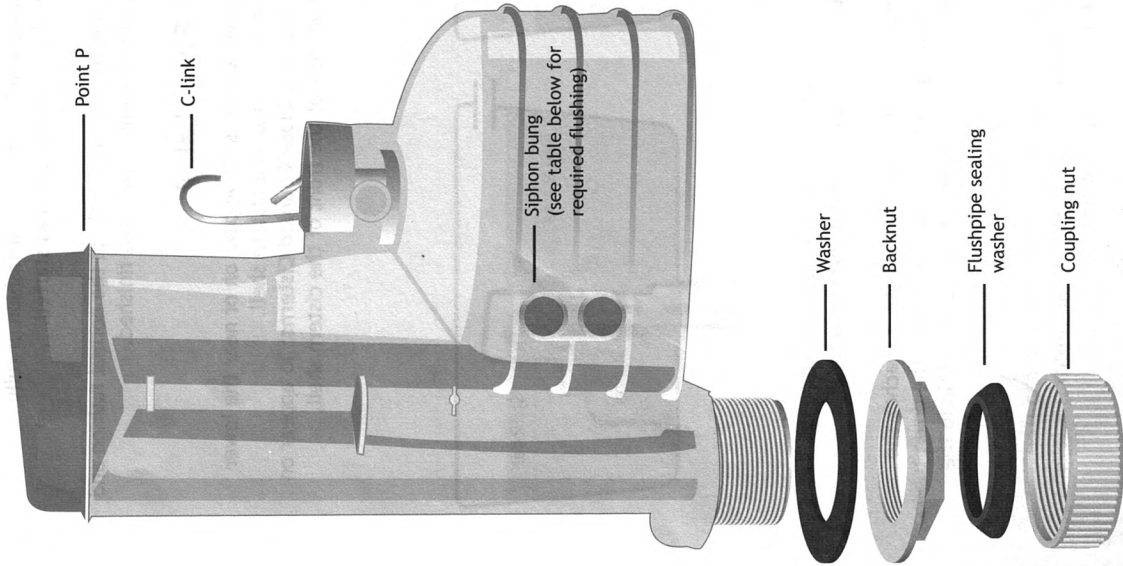
STAGE 2

Fitting your Delchem Dual flush siphon

- For high and low level cisterns**
- 1 Undo the coupling nut below the cistern and undo the siphon backnut.
 - 2 Take the old siphon unit out of the cistern and fit new siphon ensuring that the rubber washer is on the inside of the cistern.
 - 3 Hand tighten the backnut and tighten a further quarter of a turn using suitable grips.
 - 4 Refit the 'C' link.
 - 5 Refit the flush pipe sealing washer and coupling nut.
 - 6 Now fit your waterproof label as instructed.

- For close coupled cisterns**
- 1 Disconnect the water supply from the tailpipe of the filling valve.
 - 2 Undo the wingnuts at the rear of the WC pan, undo the wall fixing screws inside the cistern.
 - 3 Carefully lift the cistern from the WC pan.

- 4 Remove the large 'doughnut' shaped washer, then undo the siphon backnut.
- 5 Take the old siphon unit out of the cistern during which it may be necessary to remove some or all of the filling valve assembly.
- 6 Fit the new siphon into the cistern ensuring that the rubber washer is on the inside of the cistern.
- 7 Hand tighten the backnut and tighten a further quarter of a turn using suitable grips.
- 8 Place a new doughnut washer on the thread and carefully reposition the cistern on the WC pan.
- 9 Replace the wall fixing screws and the wingnuts.
- 10 Refit the 'C' link.
- 11 Reconnect the water supply to the filling valve.
- 12 Now fit your waterproof label as instructed.



Siphon Flushing Volumes
(Indicative values only)

6 litres	○	●	○	●
7 litres	●	○	○	●
9 litres	○	○	○	○