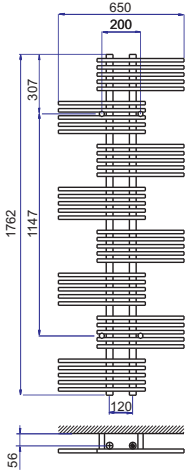
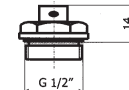


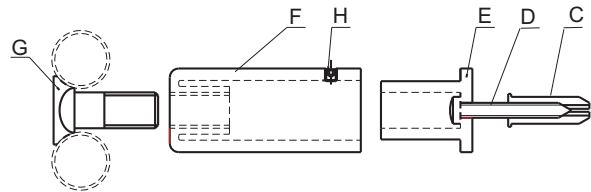
Assembly Instructions

Design-radiator (SD)

Parts Supplied

Ref	Description	Illustration	Qty
A	Radiator		1
B	Air vent		1

Fittings Supplied (for solid walls)



Ref	Description	Illustration	Qty
C	Masonry plug		4
D	Screw		4
E	Insert bush		4
F	Outer casing		4
G	Screw plug		4
H	Grub screw		4

Tools Required (not supplied)

Drilling Machine Drill 8 mm masonry 22 mm Spanner Screwdriver Hammer
--

Before you start :

- Please read instructions carefully before installation.
- Check the pack and make sure you have all parts listed above. If not, contact your supplier who will be able to help you.
- Before drilling, first check that there are **no** hidden water pipes or electrical cables.
- This radiator is designed for use on an open or closed heating system up to a max pressure of 10 bars . For use on open systems the warrantee is subject to the addition of an anti-corrosion additive like Fernox.
- When you are ready to start, make sure you have the right tool to hand, plenty of space and clean dry area for assembly.
- Make sure that you use the right type of wall fixing; -masonry wall plugs supplied -.

Installation

1. For masonry walls drill 4 holes to a depth of approximately 60 mm and a diameter of 8 mm.
The upper pair of fixings should be below the 7th horizontal tube the lower ones above the 7th tube from the bottom (horizontal distance about 200 mm ; vertical distance 1147 mm)
The distance from the floor to the bottom of the radiator must be at least 200 mm for efficient heating (ventilation).
The horizontal distance between the two ½” pipe connections is 120 mm
2. Insert masonry wall plugs (C) provided into the drilled holes.
3. Fasten screw (D) provided through insert bush (E) to fix securely to the wall. **Take care not to over tighten**
4. Fix the outer casing (F) and screw plug (G) loosely to the horizontal bars of the towel radiator. The screw plug (G) must be at the front of the radiator and the casing at the back.
5. Position the radiator by sliding the outer casings (F) (attached between the horizontal bars) over the insert bush (E) of the brackets already attached firmly to the wall.
Tighten the screw plugs (G) by turning outer casing (F) to secure the towel radiator is held securely.
6. Secure fixings by inserting the small “grub” screw (H) provided into the pre threaded holes in of the brackets outer casing (F). **Take care not to over tighten.**
7. Fit the supplied air vent (B) into the upper thread of the radiator.
8. Connect the water flow and the return pipes to the chosen sides of the radiator. Make the final connections to the radiator isolation valves (not supplied). Ensure a water tight seal by using PTFE tape on the threads.
9. Open the valves to the radiator, fill and purge the remaining air from the radiator using the air vent (B). When full close the air vent.

Care & Use

- You must be absolutely certain that the system is **THOROUGHLY** flushed before it is commissioned in order to rinse out any metal, flux and foreign residues. The system must also be thoroughly vented.
- To help prevent internal corrosion and lime scale formation it is recommended that a suitable inhibitor is added to the central heating system.
- Wipe clean with a soft or damp cloth. Never use scourers, abrasives or chemical cleaners.

Troubleshooting

- If some pipes of the radiator are not warm, check and purge once more using the air vent.