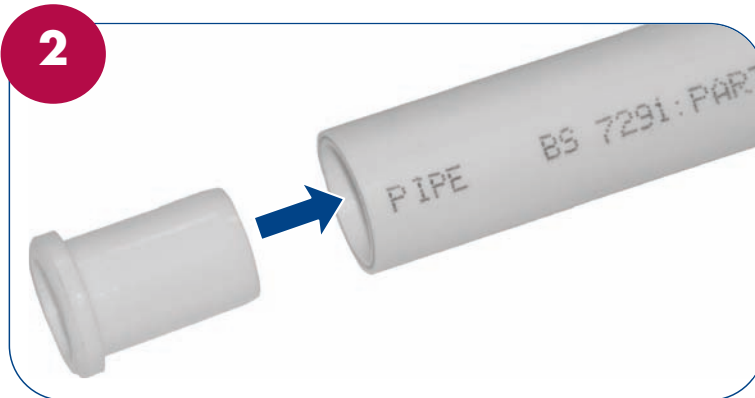


FloFit Step by Step Installation Guide



Cut pipe to size using pipe cutters (do not use a hacksaw).

REMEMBER: Ensure the pipe is free from imperfections as this could lead to leakages.



Fit the pipe insert into the pipe.

REMEMBER: On all joints please ensure that the pipe insert has been fitted. Copper pipe does not require a pipe insert to be fitted.



We recommend that you mark the insertion depth onto the pipe.

Please see table below:



Insert the pipe into the fitting ensuring it passes through the o-ring until it reaches the stop point.

Pipe Size	Insertion Depth
10mm	23mm
15mm	33mm
22mm	36mm

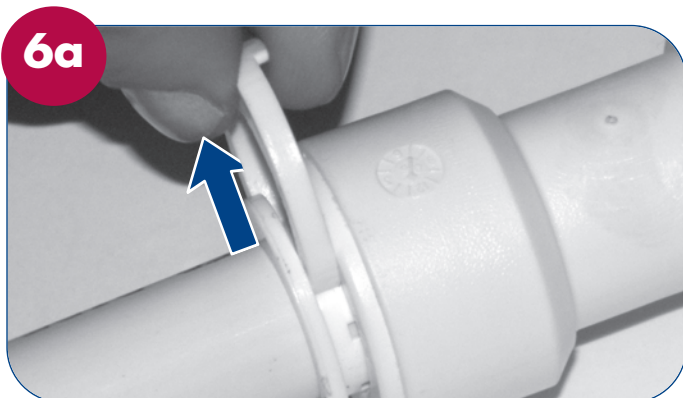
FloFit Step by Step Installation Guide



Check that the assembly is secure by pulling away the pipe from the fitting.



To identify hot and cold water circuits use red/blue collets (supplied separately).



To dismantle a fitting :

- a) Remove the collet clip.
- b) Push the collet face towards the face of the fitting.
- c) Pull the pipe out.