

MODEL B WASHBASIN

D20162N

Washbasin top manufactured from 0.9mm thick, grade 1.4301 (304) stainless steel - high polish finish. The apron support is made from 0.9mm (430) material - high polish finish. Prepared for 32mm waste outlet overflow. Supplied with two tapholes in the rear ledge. Wall mounting by using the fixing holes provided in both the rear upstand and the rear apron fixing brackets. Screws and plugs are not supplied. With 32mm waste, plug, overflow and chain

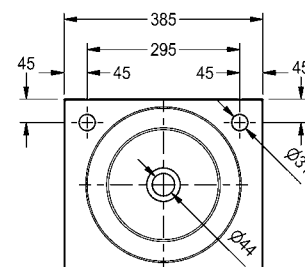
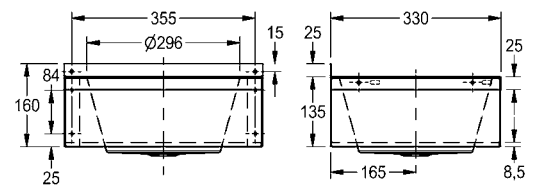
ARTICLE NUMBER

D20162N

EAN 7612979003116

TECHNICAL DATA

Material	stainless steel
Material code	1.4301 Chrome Nickel steel V2A
Material thickness	0.9 mm
Surface finish	satin finished
Bowl finish	satin finished
Gross weight	2.5 kg
Type of mounting	wall mounting
Waste size	DN 25
Waste kit included	yes
Tap ledge	yes
Overall width	382 mm
Overall height	173 mm
Overall depth	332 mm
Bowl - depth	298 mm
Bowl - bowl depth	173 mm
Bowl shape	circle
Waste hole position	centre
Waste hole projection	166 mm
Rear upstand	yes
Overflow	yes



Franke Washroom Systems
 ws-info.uk@franke.com
 www.franke.com

2012-09-03, Franke WS

FRANKE

WASHROOM SYSTEMS

Franke Sissons Ltd, Carrwood Road, Sheepbridge, Chesterfield, S41 9QB
Telephone: 01246 450255 Fax: 01246 451276 Email: ws-info.uk@franke.com

Fixing Instructions for; D20161N Model A Wash Hand Basin D20162N Model B Wash Hand Basin D20163N Model WB18 Wash Hand Basin

1. Place the wash basin upside down ensuring that the polished surface is protected from possible damage. Fit the apron support inside the turndown of the wash basin surround ensuring that both slotted and circular hoppers are aligned. Note - the rear apron return should be level with the basin upstand so that it fits flush to the wall.

Fix together using the four screws, washers and nuts supplied. When the screws are fitted in the front corners it is advisable to hold the nut in position using a pair of pliers. The screw can then be tightened using a screwdriver. Do not fully tighten all the screws until satisfied that the apron is in the correct and final position.

2. Once assembled mark the desired position on the wall. The recommended height for adult use is 850 - 900mm. Mark the fixing hole positions - two in the upstand and four in the apron returns.

3. Drill the fixing positions and fit wall plugs to suit the screws to be used (no plugs or screws are supplied)

4. Fit the waste (and chain stay if required - D20161N only) to the wash basin (waste packs are only supplied as an extra and are not automatically supplied unless requested at the time of order)

Note:

D20161N is fitted with a 32mm waste outlet and chain stay (no overflow).

D20162N & D20163N are both fitted with a 32mm waste and overflow.

5. Fix the wash basin to the wall by the two fixing holes in the upstand. Once supported on the wall securely screw fix through the apron support returns, using the appropriate screwdriver.

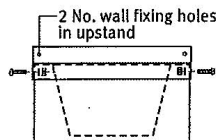
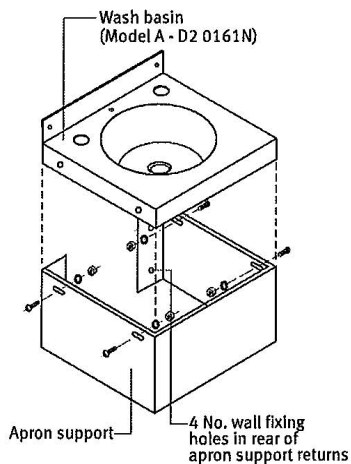
6. Fit the taps, Taps are only supplied at the time of order as extras and are not supplied as standard.

7. Connect the taps to the mains water services and the waste to the drainage system as necessary.

8. Remove the plastic coating, where applicable.

See diagrams overleaf

Fixing Instructions for; D20161N, D20162N, D20163N Wash Hand Basin



**Front elevation showing
how the apron support
fits into the wash basin
surround**

Illustration showing how the wash basin fits onto the apron support.

Note: The model shown is the D20161N but not the same fixing procedures are required for the other models

Model D20161N is the only model not fitted with an overflow. However a chain stay is supplied for fitting into the small hole directly behind the bowl. (see above).