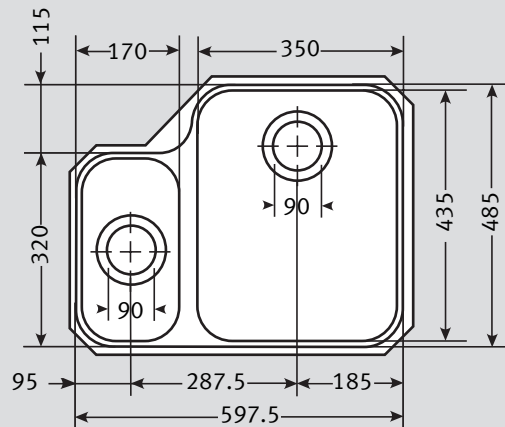


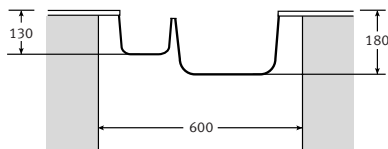
Ariane ARX 160 Specifications

- One and a half bowl undermounted configuration
- One cut out required
- Large bowls
- Good diagonal dimensions for larger utensils
- 2 x 90mm wastes
- Waste disposal unit easily accommodated
- Available as a Designer Pack
- Accepts all Ariane Accessories

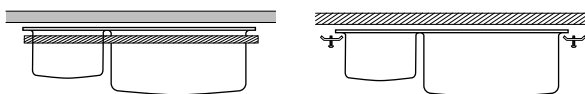


Material:	Stainless Steel
Application:	Undermounted solution for all solid synthetic surfaces
Bowl Size:	350 x 435 x 180 } Bowls welded to frame 170 x 320 x 130 }
Drainer Format:	N/A
Cut-out Size:	Utilise template *Standard template cut-out for sink is oversized providing flange reveal.
Colour:	Silk Stainless Steel
Seal:	Apply sealant locally
Insulation:	Black pads for sound insulation
Heat Resistance:	Up to 300°C
Earthing Point:	Earthing tag supplied

Cabinet Size:

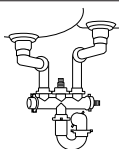


Fixing Clips: Undermount Clips (bag of 6)

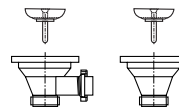


Alternative fixing systems

Plumbing Kit: 2 Part



Waste: 1 x Lira 90mm Basket Strainer Waste with overflow
1 x Lira 90mm Basket Strainer Wastes



Overflow:



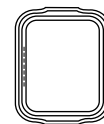
Accessories Available:



Strainer Bowl
Available in White, Almond, Brown or Black



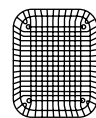
Strainer Bowl
Stainless Steel



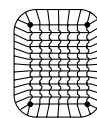
Drainer Tray
Available in White, Almond, Brown or Black



Drainer Tray
Stainless Steel



Drainer Basket
Available in White, Almond, Brown or Black



Drainer Basket
Stainless Steel



Food Preparation Platter
Iroko Large

Taps: Any Franke tap can be utilised with this model*.

*Ceramic disc taps in certain installations or where there is a low head of water (below 4 metres) may not provide adequate flow rates. You are advised to check with your supplier.

*NB. Cut-out template declaration

Guarantee: Franke sinks are guaranteed for 25 years against manufacturing defect. Franke taps are guaranteed against defective materials and workmanship for 1 year in relation to coatings and finishes, and 5 years in relation to moving parts. Franke will replace (and where appropriate repair) defective sinks. In relation to taps, Franke will where appropriate provide replacement parts for your taps or replace your taps. Any associated or ancillary costs to be incurred by you as a result of replacement of Franke sinks and taps under this guarantee shall in all cases be previously approved by Franke UK Limited. This guarantee is in addition to and does not affect your statutory rights.