

# FOOD HANDLER'S HAND WASHBASIN

**D20200N**

Manufactured from 1.2mm thick, austenitic grade stainless steel and have a satin polish finish throughout. A thermostatic pre-mixer valve is fitted to provide a constant temperature for the water supply. A paper dispensing housing is located behind the hinged front panel (paper not supplied). The bowl is supplied complete with a 32mm flush grated waste outlet. Two tapholes are provided for fitting the lever operated tap and soap dispensing unit which are both supplied with the wash basin. An earthing lug is fitted to the underside of the bowl. Six fixing holes are provided in the rear return of the end panels for screwing to the wall (screws and plugs are not supplied).



## ARTICLE NUMBER

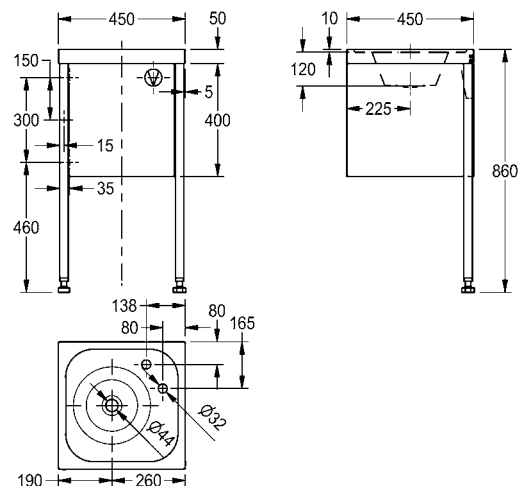
D20200N

EAN 7612979003253

## TECHNICAL DATA

Material	stainless steel
Material code	1.4301 Chrome Nickel steel V2A
Material thickness	1.2 mm
Surface finish	satin finished
Bowl finish	satin finished
Gross weight	4.3 kg
Type of mounting	wall and floor mounting
Waste size	DN 25
Waste kit included	yes
Tap ledge	yes
Overall width	450 mm
Overall height	860 mm
Overall depth	450 mm
Bowl - depth	273 mm
Bowl - bowl depth	120 mm
Bowl shape	circle
Waste hole position	centre
Rear upstand	no
Tap hole position	right

WASHROOM SYSTEMS



Franke Washroom Systems  
 ws-info.uk@franke.com  
 www.franke.com

2012-09-03, Franke WS

**FRANKE**