

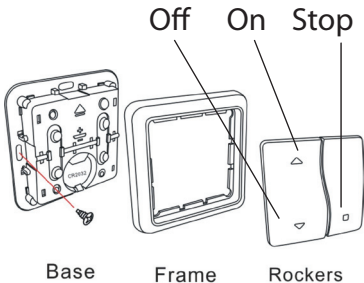
On/Off/Stop Switch Operation Manual

Model No: JSJS LW826

It is important to install this product in accordance with the fitting instructions below. Failure to do so may render your guarantee void.

IMPORTANT: PLEASE RETAIN THESE INSTRUCTIONS FOR FUTURE REFERENCE AND FOR GUIDANCE ON THE ASSOCIATION OF REMOTE HANDSETS. FOR HELP AND SETUP GUIDANCE PLEASE VISIT www.lightwaverf.com

OVERVIEW:



The On/Off/Stop Switch is designed to operate the LightwaveRF Inline Relay. The 'Stop' function makes it particularly useful in the operation of curtains and automatic doors.

SETUP:

The functions illustrated here relate to the operation of the LightwaveRF Inline Relay. For information regarding how to pair the On/Off/Stop Switch to the relay, please refer to the setup instructions for that individual device.

IMPORTANT: The On/Off/Stop Switch is only designed to work with the Inline Relay.

NOTE: If the RF range between the transmitter and receiver is too great to achieve reliable operation, the LightwaveRF Connect SIGNAL BOOSTER may be used in conjunction with this product to increase the signal strength over greater distances.

OPERATION :

'ON' Button - Press once to switch on paired relays.

'OFF' Button - Press once to switch off paired relays

'STOP' Button - Press once to set paired relays to the 'stop' position.

Changing the Remote Battery

1. Locate one of the two small slots cut into the bottom edge of the 'stop' and 'off' keys on the On/Off/Stop Switch.
2. Using a small screwdriver, gently insert into the slot and prise off one of the keys.
3. The battery holder is located under the keys.
4. Carefully Replace the CR2032 Coin Cell battery
5. Gently replace the keys and press down until a 'click' sound is heard.

NOTE:

- Connect correctly and securely
- Do not recharge
- Keep away from children
- Do not swallow (If swallowed, seek medical advice immediately)
- Please dispose of used batteries responsibly

SPECIFICATION

RF frequency: 433.92 MHz

Battery: CR 2032 Battery



J S J S D E S I G N S P L C

Birmingham Science Park Aston
Faraday Wharf
Holt Street
Birmingham
B7 4BB

Tel: 01902 500 562

Email: support@jsjsdesigns.com

If you are going to use LightwaveRF equipment in your house, please read the information below to ensure you will get the most out of your hardware.

Loading

Our one and two gang dimmers can handle a maximum of 250W of load on *each gang* of the switch. The three and four gang switches have a maximum load of 210W on *each gang*. If you exceed this load, the switches may overheat and cease to work correctly.

Each gang requires a minimum load to function. This is generally 40w but can be lower with some lamps. This is generally the case with LEDs where a load of 14W can be enough to have the switch operating.

Bulbs

LightwaveRF switches can be used with standard incandescent bulbs, halogen bulbs (including low energy halogens) and dimmable LED bulbs (see below).

Fluorescent tube lighting, including CFL bulbs cannot be used with LightwaveRF equipment. This includes the LightwaveRF CFR bulb.

LEDs

As there is no standard set for LEDs at present, we cannot state that every dimmable LED will work with LightwaveRF equipment. Even if exceeding the minimum load, certain LEDs will not function on their own. In these situations wiring a dummy load* in parallel across the circuit will correct the issue.

The following LEDs have been tested and do work when at least 2 lamps are in a circuit:

- AuraLED AL-GU10 PRO 5W
- AuraLED AU-GU10 5x1W
- Auralux AU-5W LED Globe 5x1W
- IstorialED G9 DL Flood
- IstorialED G9 WW Flood
- TCP Dimmable Energy Saver LED 5W
- Truelux 230-5W-DIM
- Toshiba LDRC0627MU1EUD 6.5W 270lm LED

Please check www.lightwaverf.com for up-to-date information on compatibility.