

## Fitting Dimension Screwless Accessories

1. After removing from packaging place the product face down onto a soft cloth or towel. Remove the decorative front plate by inserting the tip of a screwdriver into one of the short slots so the screwdriver is between the inside edge of the decorative plate and the outer edge of the clear plastic. Apply gentle pressure and twist the screwdriver one quarter turn (as shown in Fig 1a). Lift out switch assembly.

Fig 1

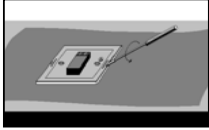
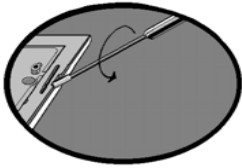


Fig 2



Fig 1a



2. Ensure wall is flat around wall box removing any lumps of plaster and sanding away any uneven plaster.
3. Connect wires to appropriate terminals on rear of switch assembly including the earth wire to the earth terminal on the metal back plate. (If possible, copy the wiring from your old switch. If in doubt, contact a qualified electrician.)
4. Use fixing screws provided to fix switch assembly onto wall box. Tighten screws evenly a little at a time until just tight enough to prevent movement of the back plate. Do not over-tighten.
5. Pick up decorative front plate carefully and push into place, pressing gently on each side to ensure the front plate has engaged with the plastic clips on the switch assembly.

N.B. (If the decorative front plate needs to be removed at any time (eg. during decorating) place the tip of a screwdriver into one of the slots on either side of the product (adjacent to the wall) and gently rotate screwdriver until clip releases front plate taking care not to let the front plate fall onto floor.)

Fig 3

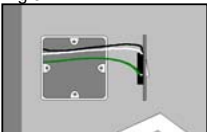


Fig 4

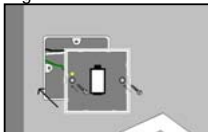


Fig 5

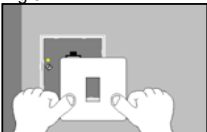


Fig 6

