

Fitting Dimension Screwless Accessories

1. After removing from packaging place the product face down onto a soft cloth or towel. Remove the decorative front plate by inserting the tip of a screwdriver into one of the short slots so the screwdriver is between the inside edge of the decorative plate and the outer edge of the clear plastic. Apply gentle pressure and twist the screwdriver one quarter turn (as shown in Fig 1a). Lift out switch assembly.

Fig 1

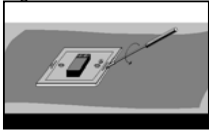
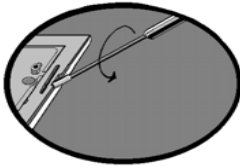


Fig 2



Fig 1a



2. Ensure wall is flat around wall box removing any lumps of plaster and sanding away any uneven plaster.
3. Connect wires to appropriate terminals on rear of switch assembly including the earth wire to the earth terminal on the metal back plate. (If possible, copy the wiring from your old switch. If in doubt, contact a qualified electrician.)
4. Use fixing screws provided to fix switch assembly onto wall box. Tighten screws evenly a little at a time until just tight enough to prevent movement of the back plate. Do not over-tighten.
5. Pick up decorative front plate carefully and push into place, pressing gently on each side to ensure the front plate has engaged with the plastic clips on the switch assembly.

N.B. (If the decorative front plate needs to be removed at any time (eg. during decorating) place the tip of a screwdriver into one of the slots on either side of the product (adjacent to the wall) and gently rotate screwdriver until clip releases front plate taking care not to let the front plate fall onto floor.)

Fig 3

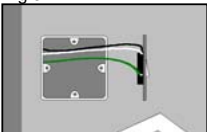


Fig 4

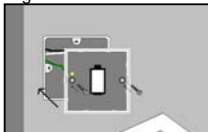


Fig 5

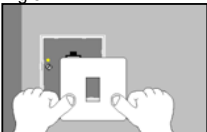


Fig 6





From VARILIGHT®

Thank you for purchasing an Impulse push-on/push-off switch from VARILIGHT. Operation is simple – push to switch on, push again to switch off.

Take advantage of extended functionality with “impulse dimming” in combination with VARILIGHT “switch dimmable” lighting. A light touch triggers the dimming cycle of “switch dimmable” lighting. A second light touch sets the light level. Push on and push off as usual. Visit www.varilight.co.uk/impulse for more information.

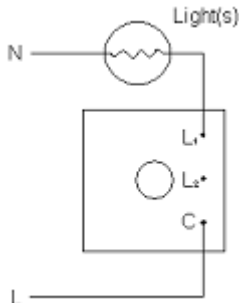
Fitting Your Impulse Switch

Read the instructions below carefully. Incorrect installation may damage the switch beyond repair. **In case of any doubt or difficulty consult a qualified electrician.**

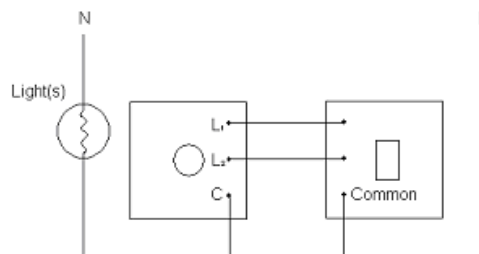
1. Switch off at the mains, then remove the existing switch and disconnect the wiring from the terminals at the rear, taking note of the present wiring and the marking on the terminals. Where there are two or more wires together in the old switch, they must be kept together in the new one.
2. To connect the wiring for 1-way circuits or for 2-way circuits refer to the diagrams below. Take care that no bare wires project out of the terminals. Keep wires together in a terminal if they were together in your old switch.
3. Switches having a metal front plate must be earthed by means of the earthing point provided.
4. Once installation is complete. Switch on the mains supply and begin using your switch.

Wiring Diagrams

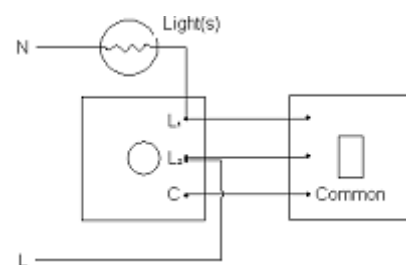
One way circuit



Two-way circuit (type 1)



Two-way circuit (type 2)



GUARANTEE

Important: In case of any defect return the switch to our service department. This guarantee is in addition to and not in derogation of the statutory rights of the purchaser and is offered so that you may have the benefit of our technical facilities. Should any defect occur in this unit within 12 months of its purchase we will replace or repair the defective unit free of charge provided that:-

- a) The unit has been correctly fitted according to the instructions.
- b) The unit has not been tampered with or taken apart.
- c) The unit is securely packed and safely returned to:-

Service Department, Carylls Lea, Faygate, Horsham, West Sussex, RH12 4SJ (Tel. (01293) 851584) together with a letter stating the guarantee registration number below, the date and place of purchase and the details of the fault.

GUARANTEE REGISTRATION NUMBER 595B