

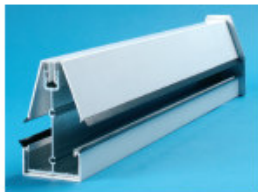


Self Supporting Roofing System

A professionally engineered Self Supporting Roofing System which free-spans 4.0m and accommodates 16mm and 25mm Multiwall Polycarbonate Roofing sheets.

Designed with flexibility in mind, this lean to roofing system is suitable for a wide variety of applications. Easy to install and available in a range of sizes – the Self Supporting Roofing System is the tradesman’s choice.

4 MAIN COMPONENTS



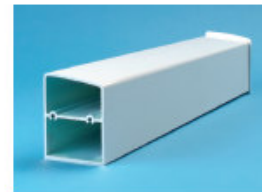
Intermediate Glazing Bar



End Glazing Bar



Wall Plate



Eaves Beam

Easy to fit components for a superior finish

WALL PLATE

The Wall Plate allows for roof pitch adjustment between 2.5 - 25° making it suitable for almost all lean to roof applications. Dedicated screw lines make fitting to the wall simple and trouble free.



END GLAZING BAR

The two piece capping accommodates 16mm and 25mm Polycarbonate sheeting and has dedicated locking points. The innovative design ensures a watertight fit and incorporates an integral drip channel which moves water away from the edge of the roof. The classic design of the capping gives an attractive finish.



EAVES BEAM

Suitable for roof pitches between 2.5 - 15°, this strong Aluminium Eaves Beam is suitable for most applications. The bar has a maintenance free white powdercoated finish and comes with End Caps and Fixing Screws.

INTERMEDIATE GLAZING BAR

Spanning a maximum of 4.0m, this single bar can accommodate 16mm and 25mm Polycarbonate sheeting. With a timeless design which complements most surrounding buildings, the attractive white PVCu capping and underclad provide an effective waterproof barrier around the sheet. Dedicated locking ensure easy installation and perfect results.



Ideal for carports, canopies and replacement roofing

- Professionally Engineered
- Innovative Design
- Accommodates 16mm & 25mm sheet thicknesses
- Easy to install
- Low maintenance

Max Length of bar (m)	Max Width between bars (mm)
4.0m	600
3.5m	700
3.35m	800
3.2m	900

Calculations based on a loading of 600 N/m² using Polycarbonate Multiwall Sheeting