

**CASTRA**  
**SECURITY FLOODLIGHT PIR**  
LSMFSP-05

 **PRODUCT MUST BE INSTALLED THROUGH A SWITCH TO ACTIVATE CONNECTION MODE**

Voltage :220-240V AC, 50-60Hz  
Wireless IEEE standard : Wi-fi 2.4Ghz b/g/n



**PIR**

The PIR Sensor can be aimed to cover the desired detection area, and has a maximum range of up to 10 Meters over a 120° degree area. Detection range is controlled by the angle of the PIR, for maximum range, point PIR directly horizontal. To reduce range, tilt the PIR towards the ground. PIR Settings in the APP allow the following adjustments:

- **Time ON** = from 10 seconds (+/- 5 seconds) to 30 minutes (+/- 2 minutes),
- **Ambient Light** = 2 Lux to 2000Lux, ambient light controls when the PIR will detect movement. For typical dusk light levels, we suggest around 50% setting.
- **Sensitivity** – Adjust the amount of movement needed to trigger the PIR

**Dusk Till Dawn Mode:**

The PIR features an internal photocell, that can detect light levels to come on and stay on all night until set lux level is reached. Ideal for all night illumination.

**Night Glow Mode:**

Allowing a 10% low light level continuous illumination, increasing to full brightness when movement is detected, Ideal for security use or ensuring some illumination at all times.

This product range is designed for domestic outdoor use. Not suitable for interior use. If outdoor connection is required, use a suitably IP rated junction box and terminals. Glands used must be suitable for HO5RN-F cable as supplied with the luminaire. The Floodlight is pre-wired with 1.0M of HO5RN-F cable, removing the need to open the housing. The external flexible cord or cable of this luminaire cannot be replaced; if the cord is damaged, the luminaire shall be destroyed.

**NOTE** – To comply with regulations, installation must be carried out by suitably qualified competent person and in accordance with the current IEE Wiring Regulations (BS761) and Building Regulations. A copy of the instructions must be left for the user/maintenance engineer for the future reference.

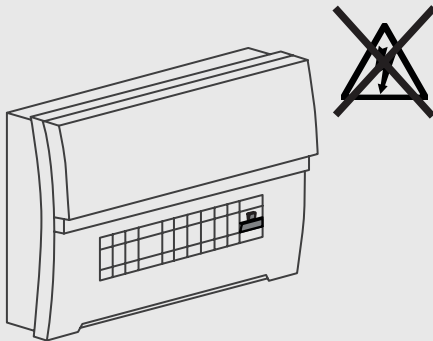
For non-UK, please refer/consult local requirements

**ENSURE ELECTRICAL SUPPLY IS DISCONNECTED/ ISOLATED BEFORE CIMMERCING INSTALLATION**



**NOTE** – During the first 48 hours of operation, the PIR may cause the LED floodlight to operate as it self adjusts to the ambient light level of the installation.

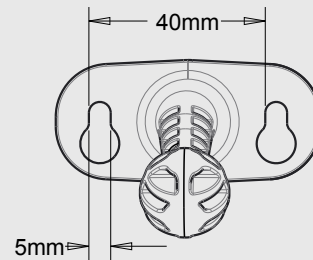
①



②

Turn OFF power supply, ensure all required equipment and tools are present. For optimal detection, avoid placing near sources of heat e.g. extractor vents

- Power Drill
- Applicable screws and fixings



Tech Help Line

UK - **0330 0249 279**

Non UK - **+44 (0)1952 238 100**

Supplied by LUCECO

Stafford Park 1, Telford, Shropshire, England, TF3 3BD

Kontakt

UK - **0330 0249 279**

Non UK - **+49 40 89066 878 - 29**

Geliefert von Luceco GmbH  
Holstenplatz 20b,  
22765 Hamburg DEUTSCHLAND

Support Technique

UK - **0330 0249 279**

Non UK - **+33 (0)1 61 10 10 35**

Notice fournie par  
Luceco SAS France & Belux 3  
Rue de Courtalin, Magny Le Hongre 77700  
FRANCE & BELUX

Servicio de asistencia telefónica

UK - **0330 0249 279**

Non UK - **+34 93 829 55 74**

(EU) Luceco SE

C/Bobinadora 1-5 08302 Mataró  
Barcelona, Spain

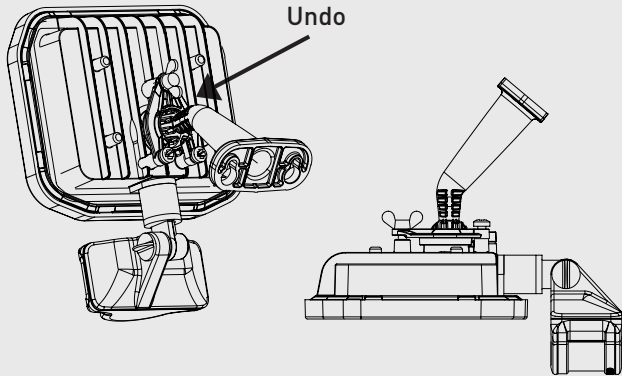
Assistenza tecnica telefonica

UK - **0330 0249 279**

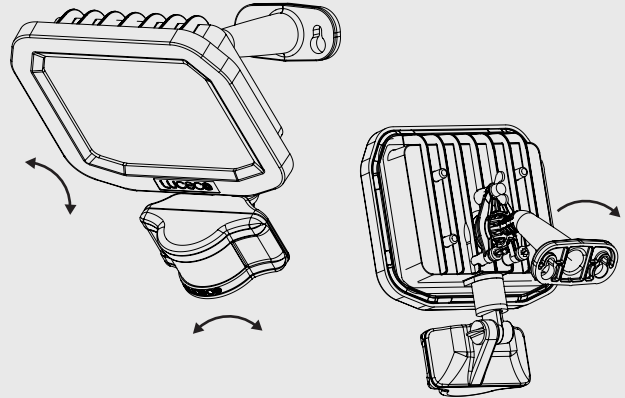
Non UK - **+39 0434 1696795**

Fornito da BG Electrical Ltd Nexus  
Italia, Via Amman 10 33170  
Pordenone, Italy

- 3** With a suitable mounting position identified, loosen main fixing bolt on the rear of the housing and tilt to allow access to fixing holes.



- 4** Fit floodlight to the wall using suitable fixings. Tilt and rotate floodlight to desired angle and securing fixing bolt. Ensure product is secure.



- 5** Connect the pre-wired cable to the electrical supply, observing the correct polarity.



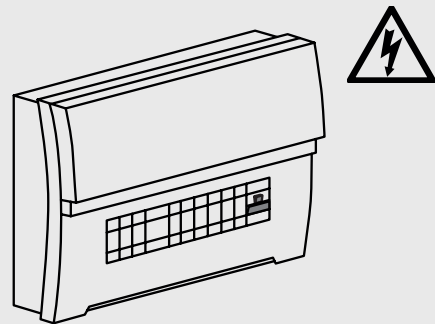
Note - Cables must be grounded

**LIVE = BROWN**

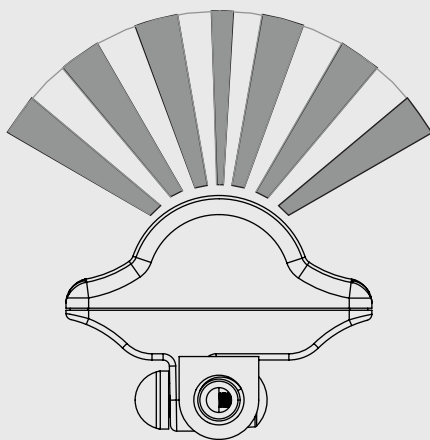
**NEUTRAL = BLUE**

**EARTH = YELLOW/GREEN**

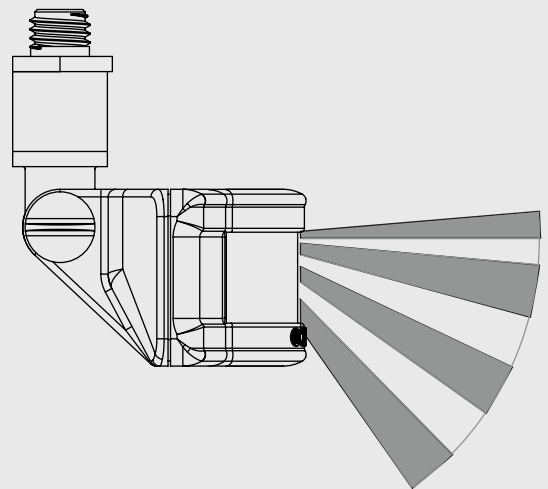
- 6** When connections are safe. re-isntate power.



**PIR**



VIEWED FROM ABOVE



Tech Help Line

UK - 0330 0249 279

Non UK - +44 (0)1952 238 100

Supplied by LUCECO

Stafford Park 1, Telford, Shropshire,  
England, TF3 3BD

Kontakt

UK - 0330 0249 279

Non UK - +49 40 89066 878 - 29

Geliefert von Luceco GmbH

Holstenplatz 20b,  
22765 Hamburg DEUTSCHLAND

Support Technique

UK - 0330 0249 279

Non UK - +33 (0)1 61 10 10 35

Notice fournie par

Luceco SAS France & Belux 3  
Rue de Courtalin, Magny Le Hongre 77700  
FRANCE & BELUX

Servicio de asistencia telefónica

UK - 0330 0249 279

Non UK - +34 93 829 55 74

(EU) Luceco SE

C/Bobinadora 1-5 08302 Mataró  
Barcelona, Spain

Assistenza tecnica telefonica

UK - 0330 0249 279

Non UK - +39 0434 1696795

Fornito da BG Electrical Ltd Nexus

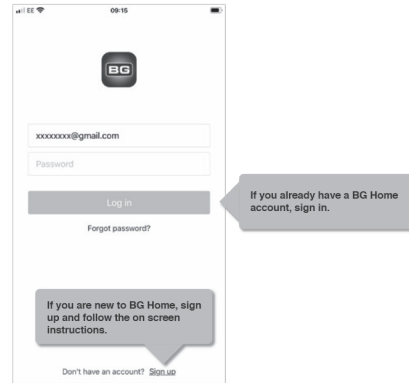
Italia, Via Amman 10 33170  
Pordenone, Italy

### 1. Download & create BG Home account

#### 1.1. Download and Install the BG Home App on your Smart device



#### 1.2. Create an account



### 2. Connecting to WiFi & setting up first device

1. Ensure that your lighting device is connected to the power supply and turned ON.
2. When switched on, the lighting device will be in configuration mode (red LED indicator in PIR will flash quickly).

Note: if the lighting device is not in configuration mode, turn the light switch OFF and ON 4 times to active configuration mode – OFF for 1 second, ON for 1 second.

3. Go to the BG Home app and “Add Device”.

4. Follow the on-screen instructions to setup your device. Please make sure your phone is connected to 2.4GHz WiFi (not 5GHz) so your device can be discovered and setup successfully.
5. Once connected to WiFi, you will be prompted to select which device to connect from those in configuration mode. Follow based on lighting device you are setting up.
6. When successfully connected, the lighting device will stop pulsing and stay switched on. Proceed to “Room” allocation and device “Naming”.
7. When successfully set up, the app will indicate a successful connection.

**NOTE:** If trying to setup multiple light fittings all connected to the same lighting power circuit, first select and successfully set up one device. After this repeat Setup, the app should automatically detect other devices in configuration mode and prompt you to connect. If not automatically detected, repeat add “WiFi equipment” setup.

#### United Kingdom Warranty

For other territories and for further information, please see [www.luceco.uk](http://www.luceco.uk) for details

Products are protected by warranty for a period of 3 years from date of purchase against defects in material and workmanship (unless otherwise stated). Should a product fail to perform as described within the warranty period it will be repaired or replaced with the same or equivalent product by Luceco, free of charge provided that you: (1) return the product to us with shipping charge prepaid, (2) provide us with proof of the original date of purchase and (3) quote our return authorization number.

Repaired or replaced products will be returned to you with shipping charges prepaid. Replacement products may be refurbished or contain refurbished materials. If in our sole discretion, we are unable to repair or replace a defective product, we will refund the purchase price of the product.

This warranty will not apply if in our judgment, the product fails due to damage in shipment, handling, storage, accident, abuse or misuse, or if it has been used in a manner not conforming to our product instructions, has been modified in any way, or has any serial number removed or defaced. Repair or attempted repair will void this warranty. Our maximum liability under the terms of this warranty is limited to the purchase price of the product covered by the warranty.

The warranty is given under English Law. If any part of this warranty is deemed unenforceable (including any provision in which we exclude our liability to you) the enforceability of any other parts of the warranty will not be affected. These terms do not reduce your statutory rights.

For Non-UK please contact Local Luceco Office for details. THESE TERMS AND CONDITIONS ARE SUBJECT TO CHANGE WITHOUT PRIOR NOTICE.

#### Eventually, you may want to replace this fitting;

##### Environmental Protection W.E.E.E (Wheelie Bin Symbol for EU ONLY)

This symbol is known as the “crossed-out” wheelie Bin Symbol”. When this symbol is marked on a product or battery, It means that it should not be disposed of with your general household waste. Some chemicals contained within electrical/electronic products or batteries can be harmful to health and the environment. Only dispose of electrical/electronic/battery items in separate collection schemes, which cater for the recovery and recycling of materials contained within. Your co-operation is vital to ensure the success of these schemes and for the protection of the environment.

#### Tech Help Line

UK - **0330 0249 279**  
Non UK - **+44 (0)1952 238 100**  
Supplied by LUCECO  
Stafford Park 1, Telford, Shropshire,  
England, TF3 3BD

#### Kontakt

UK - **0330 0249 279**  
Non UK - **+49 40 89066 878 - 29**  
Geliefert von Luceco GmbH  
Holstenplatz 20b,  
22765 Hamburg DEUTSCHLAND

#### Support Technique

UK - **0330 0249 279**  
Non UK - **+33 (0)1 61 10 10 35**  
Notice fournir par  
Luceco SAS France & Belux 3  
Rue de Courtalin, Magny Le Hongre 77700  
FRANCE & BELUX

#### Servicio de asistencia telefónica

UK - **0330 0249 279**  
Non UK - **+34 93 829 55 74**  
[EU] Luceco SE  
C/Bobinadora 1-5 08302 Mataró  
Barcelona, Spain

#### Assistenza tecnica telefonica

UK - **0330 0249 279**  
Non UK - **+39 0434 1696795**  
Fornito da BG Electrical Ltd Nexus  
Italia, Via Amman 10 33170  
Pordenone, Italy