

HOZELOCK

2212

Sensor Controller



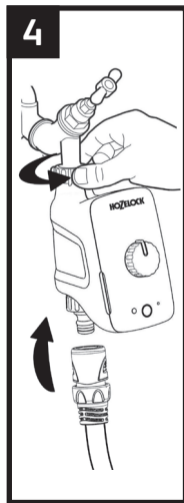
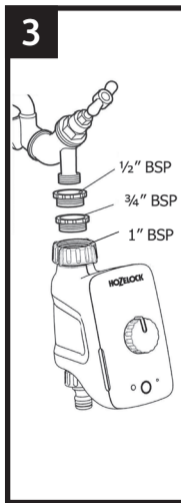
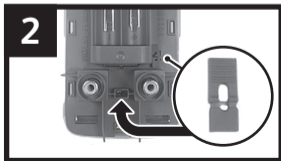
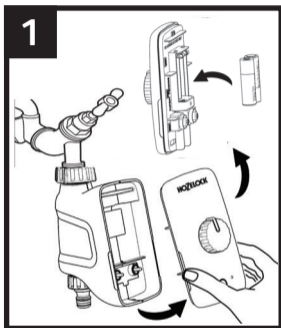
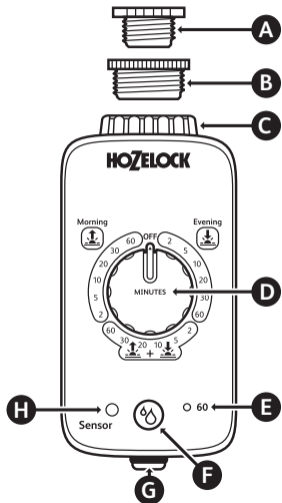
The diagram illustrates the installation and setup process. It shows a computer monitor displaying 'www.hozelock.com', a QR code, an open box, a stick figure looking at a laptop with a question mark, another stick figure holding a sensor, and a box labeled 'HOZELOCK'. Arrows indicate the flow of information and components.

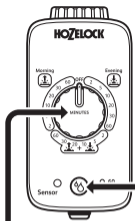
CE

Hozelock Ltd.
Midpoint Park, Birmingham,
B76 1AB. England
Tel: +44 (0) 121 313 1122

www.hozelock.com
33914-TUV

Sensor Controller





Water now
Arroser maintenant
Jetzt bewässern
Nu bewatern
Regar ahora
Acqua ora

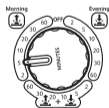
5

Watering duration • Durée d'arrosage
Bewässerungsdauer • Duur bewatering
Duración de riego • Durata dell'annaffiatura

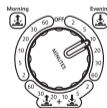
Morning • Matin
Morgens • Ochtend
Mañana • Mattino

Evening • Soir
Abends • Avond
Noche • Sera

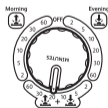
Morning + Evening • Matin + Soir
Morgens + Abends • Ochtend + Avond
Mañana + Noche • Mattino + Sera



5
Mins



10
Mins




20 + 20
Mins Mins

6

Watering schedule • Programme d'arrosage
Bewässerungsplan • Bewateringsschema
Programa de riego
Programmazione dell'annaffiatura

	DAY • JOUR • TAG • DAG • DIA • GIORNO						
	1	2	3	4	5	6	7
Waters every day							
Arrosage quotidien							
Tägliche Bewässerung	💧	💧	💧	💧	💧	💧	💧
Bewatert elke dag							
Riega todos los días							
Annaffia ogni giorno							

GB

- A** 21mm G½ (½" BSP) Adaptor
- B** 26.5mm G¾ (¾" BSP) Adaptor
- C** 33.3mm G1 (1" BSP) Adaptor
- D** Duration dial
- E** LED indicator lights
- F** Water Now button  - On/Off/Override
- G** Hose pipe connector
- H** Light Sensor





Installation & operating instructions



READ THESE INSTRUCTIONS CAREFULLY BEFORE ATTEMPTING TO USE THIS PRODUCT.

FAILURE TO OBSERVE THE FOLLOWING NOTICES MAY RESULT IN INJURY OR PRODUCT DAMAGE

General information

-  **THESE INSTRUCTIONS ARE ALSO AVAILABLE ON THE HOZELOCK WEBSITE.**
-  This product meets the requirements of IP44 and therefore can be used in exposed weather conditions.
-  This product is not suitable for supplying drinking water.
-  Threaded water connections are suitable for hand tightening

only.



This product can be fitted to mains water supply.



This product can be fitted to outdoor water butts or tanks that have an inline filter fitted before the controller.

Installing the batteries

You must use Alkaline batteries – alternatives will result in incorrect operation.

- 1** Remove the front panel as shown (Fig. 1), gripping the recessed part and pulling towards you.
- 2** Insert 2 x 1.5v AA (LR6) batteries (Fig. 1) and replace the controller front panel.

IMPORTANT: Rechargeable batteries must not be used.

- 3** Replace batteries each season. (max 8 months use, used twice a day)
- 4** When batteries are installed the motor will operate the internal valve to check that it is ready for use and the batteries installed have enough charge to safely operate the valve
- 5** If the LED indicator flashes red, the batteries need to be replaced.

Connecting the Sensor Controller to the tap

- 1** Choose the correct tap adapter (Fig. 3)
- 2** Using the correct adapter(s), attach the controller to the tap and tighten firmly to avoid leaks. Do not use a spanner or other tool to tighten as this might damage the threads. (Fig. 4)
- 3** Turn on the Tap.


How to set up the Sensor Controller - automatic watering

Sunrise and Sunset is the best time to water your garden to avoid evaporation and leaf scorch. The Daylight sensor automatically adjusts the watering schedule to coincide with the changing time for sunrise and sunset.


Cloudy or overcast mornings and evenings might cause a slight delay to the watering times, but these are not significant to have any adverse effects on your garden.

- 1** Rotate the control dial to select from the 3 marked sections – Sunrise (once a day), Sunset (once a day) or Sunrise and Sunset (twice a day). (See Fig. 5)
- 2** Choose from the required watering durations – 2, 5, 10, 20, 30 or 60 minutes of watering.

How to turn off the Sensor Controller

If you do not want the controller to automatically come on turn the rotary dial to the “OFF” position. You can still use the  button to manually water your garden.

Initial synchronisation period

When you install new batteries there is a 6 hour lockout period to prevent the controller from watering while you are setting up your system. After a 24 hour cycle of Sunrise and Sunset the controller will be synchronised with the changing light levels. You can manually water your garden using the  button during the 6 hour lockout period.

Positioning your Sensor Controller outdoors

It is important that your water controller is in an outdoor location. Do not point the control panel directly towards outdoor security lights or other bright lights that come on during the night as these might interfere with the recorded light levels and cause the controller to come on at the wrong time.

Ideally, you should not set up your controller in a heavily shaded passageway or behind buildings where light levels remain low all day long. Do not position the controller inside buildings such as garages or sheds where it will not receive natural daylight to function correctly.

The controller is designed to be positioned directly underneath an outdoor tap. Do not position the controller on its side or lying on the ground whereby rainwater cannot flow away from the product.

1 hour delay (when using 2 Sensor Controllers together)

If you install two Sensor Controllers you might want to stagger the start times to prevent pressure loss when two appliances are used simultaneously – for example sprinklers.

Remove the delay plug from the storage location on the back of the control panel (Fig. 2) and fit the plug on the location below the batteries.


With the plug inserted the one hour delay affects all automatic watering. The delay period of one hour cannot be changed.

Manual operation (water now)

You can turn on the water controller at any time by pressing the  button once. Press again to turn off at any time.

Note: To protect battery life the water controller can only be turned on and off a maximum of 3 times in one minute.

How do I cancel an automatic watering operation

The  button can also be used as a manual override to cancel any current automatic watering operation that has started. The schedule will then resume.

Battery level check

Press and hold down the Water Now  button to check the status of the batteries at any time.

GREEN = BATTERY IS GOOD

RED = BATTERY LEVEL IS LOW, REPLACE THE BATTERIES SOON.

Failure prevention mode

A built in safety feature detects when the battery levels have dropped to a level that could fail whilst the valve is open and result in wasting water. The safety mode prevents the controller from turning on until the batteries have been replaced. The LED indicator light will flash red when the failure prevention mode has been activated. The Water Now function will also not operate until the batteries have been replaced.



This product is not designed to be used in sub-zero (frost) temperatures. During winter months drain any remaining water out of your timer and bring it indoors until the next watering season.

Troubleshooting

Problem	Possible cause	Solution
Valve opens but no water comes out	Garden tap is off	Turn on tap
	Hose pipe twisted or blocked	Untwist/unblock hose
Button pressed but valve doesn't open	Wrong or flat batteries	Check battery type and/or replace with fresh batteries
Button pressed Light came on but valve did not open	1 minute lock out has operated	Wait three minutes and try again
Controller set up correctly but did not come on at sunset	Controller waiting to synchronise	Wait 24hrs and observe again
Controller activated when outside lights come on	Outside lights too bright	Move or rotate controller away from light sources

Technical Data

Operating Pressure	0.1 – 10 Bar
Operating Temperature	0 - 55°C
Max. Water Temperature	25°C

Technical Data	
Battery Type	2x 1.5V AA (LR6) Alkaline Batteries
Average Battery Life	8 months used twice a day
Watering Cycles	Max. 2x watering cycles per day
Watering Durations	2, 5, 10, 20, 30 or 60 minutes
Purpose of Control	Electrically operated water valve
Mounting Method	Surface mounting
Action Type	Type 1
Pollution Degree	4

Contact details

If you have any further problems with your water timer please contact Hozelock customer services.

Hozelock Limited
Midpoint Park, Birmingham. B76 1AB.

Tel: +44 (0)121 313 1122

Internet: www.hozelock.com

Email: consumer.service@hozelock.com

Declaration of Conformity to CE

Hozelock Ltd declare that the following Electrically Operated Water Valves:

- **Sensor Controller (2212)**

Comply with:

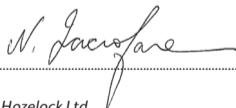
- **the Essential Health and Safety Requirements of the Machinery Directive 2006/42/EC and its amending directives.**
- **EMC Directive – 2014/30/EU**
- **RoHS Directive 2011/65/EU**

and conforms to the following harmonised standards:

- **EN61000-6-1:2007**
- **EN61000-6-3:2011**

Date of Issue: 09/11/2015

Signed by:.....



Nick Iacofano
Technical Director, Hozelock Ltd.
Midpoint Park, Sutton Coldfield, B76 1AB. England.

HOZELOCK

Sensor

IP44 2212 0000

max: 10 Bar Tmax: 55°C

3V d.c. (2 x LR6) 1W



www.hozelock.com

201014-a0001

40152-000



WEEE

Do not dispose of electrical appliances as unsorted municipal waste, use separate collection facilities. Contact your local government for information regarding the collection systems available. If electrical appliances are disposed of in landfills or dumps, hazardous substances can leak into the groundwater and get into the food chain, damaging your health and well-being. In the EU, when replacing old appliances with new ones, the retailer is legally obligated to take back your old appliance for disposals at least free of charge.