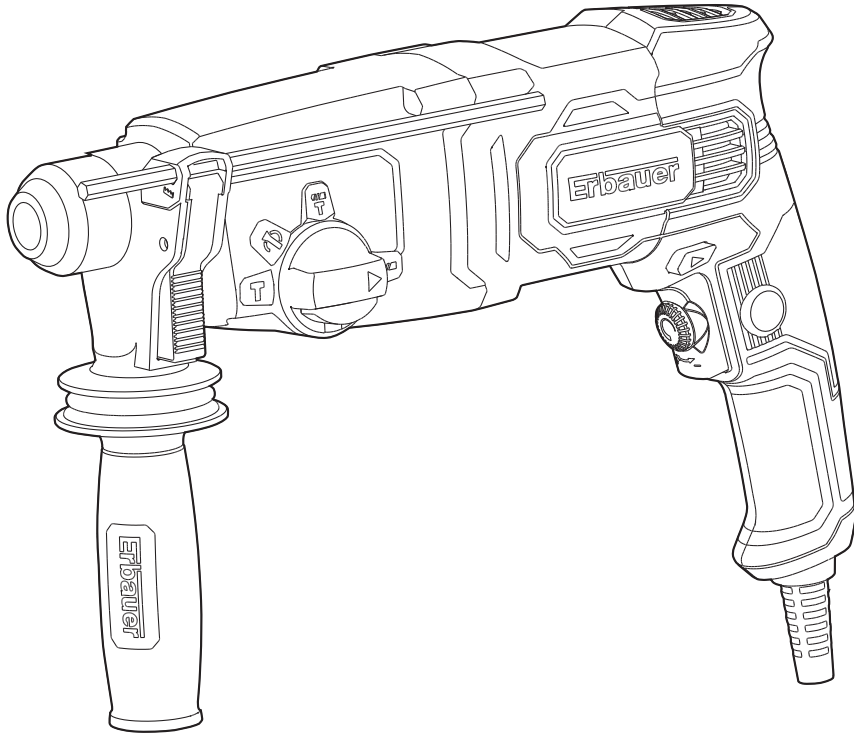




**Erbauer**



EAN. 3663602784357

**ERH750**

ORIGINAL INSTRUCTIONS

EN



Safety instructions



Product description



Assembly



Use



Care & maintenance



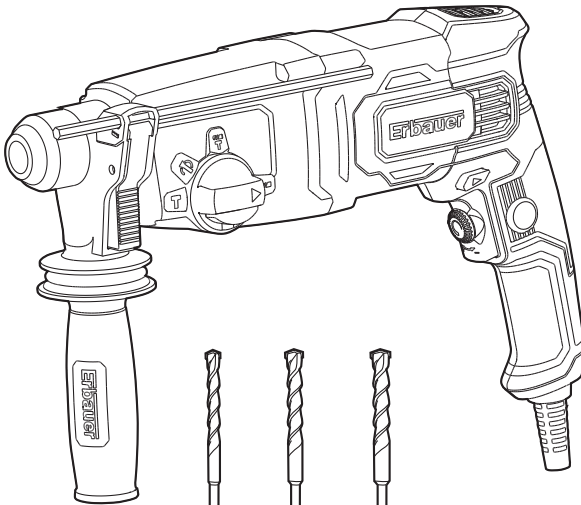
Guarantee



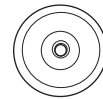
Declaration of Conformity



**WARNING!** Please read all safety warnings carefully and be sure that they are fully understood before handling the tool.

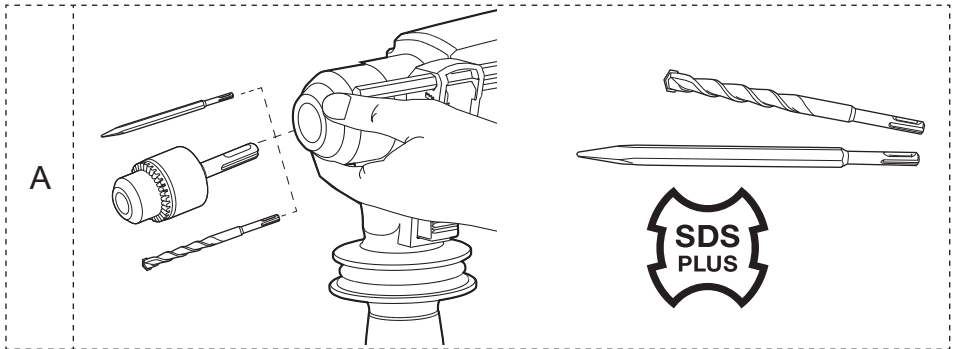
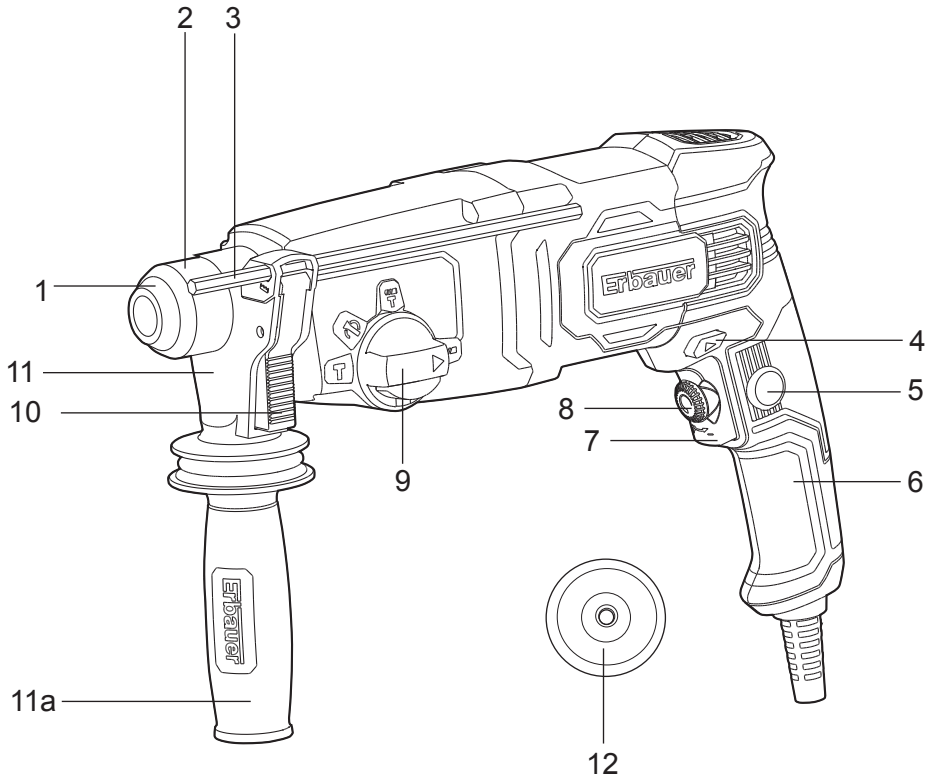


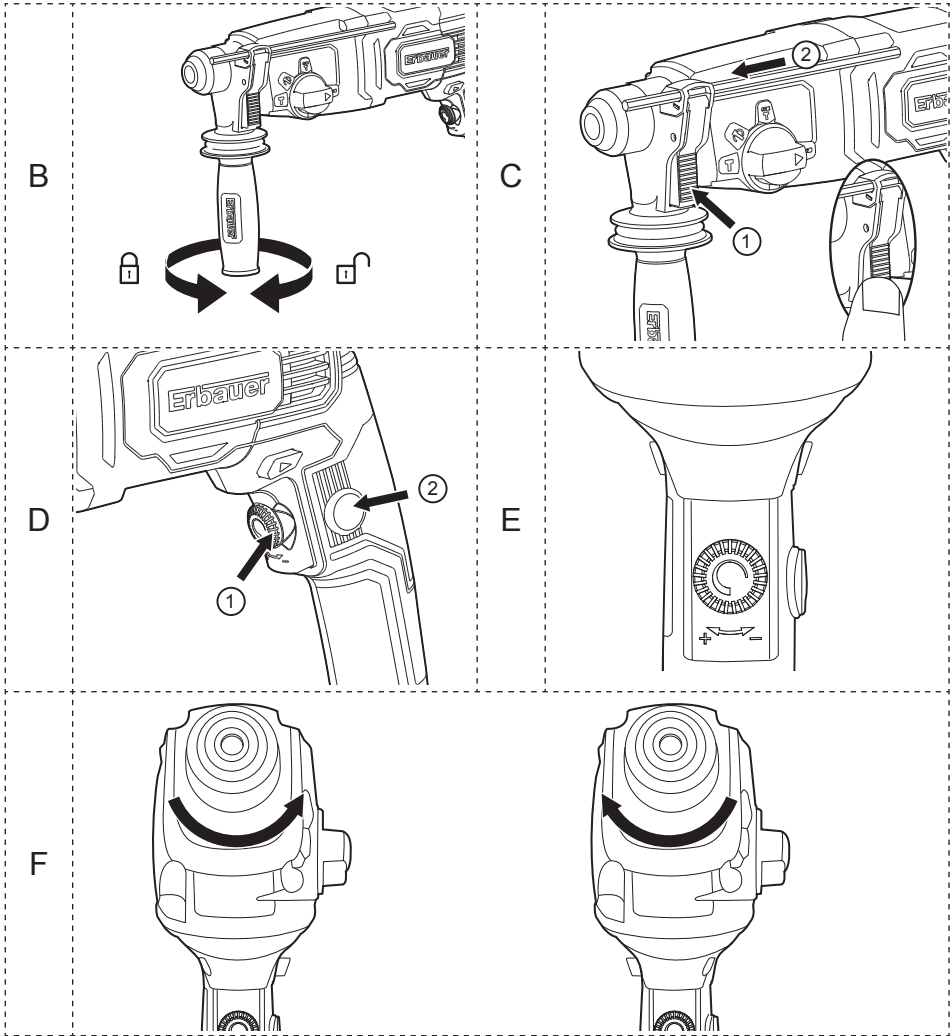
Ø8mm    Ø10mm    Ø12mm





## PRODUCT DESCRIPTION







## SAFETY INSTRUCTIONS

### GENERAL POWER TOOL SAFETY WARNINGS



**WARNING!** Read all safety warnings, instructions, illustrations and specifications provided with this power tool. *Failure to follow all instructions listed below may result in electric shock, fire and/or serious injury.*

**Save all warnings and instructions for future reference.** *The term “power tool” in the warnings refers to your mains-operated (corded) power tool or battery operated (cordless) power tool.”*

#### WORK AREA SAFETY

- a** **Keep work area clean and well lit.** *Cluttered or dark areas invite accidents.*
- b** **Do not operate power tools in explosive atmospheres, such as in the presence of flammable liquids, gases or dust.** *Power tools create sparks which may ignite the dust or fumes.*
- c** **Keep children and bystanders away while operating a power tool.** *Distractions can cause you to lose control.*

#### ELECTRICAL SAFETY

- a** **Power tool plugs must match the outlet. Never modify the plug in any way. Do not use any adapter plugs with earthed (grounded) power tools.** *Unmodified plugs and matching outlets will reduce risk of electric shock.*
- b** **Avoid body contact with earthed or grounded surfaces, such as pipes, radiators, ranges and refrigerators.** *There is an increased risk of electric shock if your body is earthed or grounded.*

- c Do not expose power tools to rain or wet conditions.** *Water entering a power tool will increase the risk of electric shock.*
- d Do not abuse the cord. Never use the cord for carrying, pulling or unplugging the power tool. Keep cord away from heat, oil, sharp edges or moving parts.** *Damaged or entangled cords increase the risk of electric shock.*
- e When operating a power tool outdoors, use an extension cord suitable for outdoor use.** *Use of a cord suitable for outdoor use reduces the risk of electric shock.*
- f If operating a power tool in a damp location is unavoidable, use a residual current device (RCD) protected supply.** *Use of an RCD reduces the risk of electric shock.*

## PERSONAL SAFETY

- a Stay alert, watch what you are doing and use common sense when operating a power tool. Do not use a power tool while you are tired or under the influence of drugs, alcohol or medication.** *A moment of inattention while operating power tools may result in serious personal injury.*
- b Use personal protective equipment. Always wear eye protection.** *Protective equipment such as a dust mask, non-skid safety shoes, hard hat, or hearing protection used for appropriate conditions will reduce personal injuries.*
- c Prevent unintentional starting. Ensure the switch is in the off-position before connecting to power source and/or battery pack, if detachable, picking up or carrying the tool.** *Carrying power tools with your finger on the switch or energising power tools that have the switch on invites accidents.*
- d Remove any adjusting key or wrench before turning the power tool on.** *A wrench or a key left attached to a rotating part of the power tool may result in personal injury.*
- e Do not overreach. Keep proper footing and balance at all times.** *This enables better control of the power tool in unexpected situations.*

- f Dress properly. Do not wear loose clothing or jewellery. Keep your hair, clothing away from moving parts. *Loose clothes, jewellery or long hair can be caught in moving parts.***
- g If devices are provided for the connection of dust extraction and collection facilities, ensure these are connected and properly used. *Use of dust collection can reduce dust-related hazards.***
- h Do not let familiarity gained from frequent use of tools allow you to become complacent and ignore tool safety principles. *A careless action can cause severe injury within a fraction of second.***

## **POWER TOOL USE AND CARE**

- a Do not force the power tool. Use the correct power tool for your application. *The correct power tool will do the job better and safer at the rate for which it was designed.***
- b Do not use the power tool if the switch does not turn it on and off. *Any power tool that cannot be controlled with the switch is dangerous and must be repaired.***
- c Disconnect the plug from the power source and/or remove the battery pack, if detachable, from the power tool before making any adjustments, changing accessories, or storing power tools. *Such preventive safety measures reduce the risk of starting the power tool accidentally.***
- d Store idle power tools out of the reach of children and do not allow persons unfamiliar with the power tool or these instructions to operate the power tool. *Power tools are dangerous in the hands of untrained users.***
- e Maintain power tools and accessories. Check for misalignment or binding of moving parts, breakage of parts and any other condition that may affect the power tools operation. If damaged, have the power tool repaired before use. *Many accidents are caused by poorly maintained power tools.***



- f Keep cutting tools sharp and clean.** *Properly maintained cutting tools with sharp cutting edges are less likely to bind and are easier to control.*
- g Use the power tool, accessories and tool bits etc. in accordance with these instructions, taking into account the working conditions and the work to be performed.** *Use of the power tool for operations different from those intended could result in a hazardous situation.*
- h. Keep handles and grasping surfaces dry, clean and free from oil and grease.** *Slippery handles and grasping surfaces do not allow for safe handling and control of the tool in unexpected situations.*

## SERVICE

- a Have your power tool serviced by a qualified repair person using only identical replacement parts.** *This will ensure that the safety of the power tool is maintained.*

## HAMMER SAFETY WARNINGS

- a. Wear ear protectors.** *Exposure to noise can cause hearing loss.*
- b. Use auxiliary handle(s), if supplied with the tool.** *Loss of control can cause personal injury.*
- c. Hold power tool by insulated gripping surfaces, when performing an operation where the cutting accessory may contact hidden wiring or its own cord.** *Cutting accessory contacting a “live” wire may make exposed metal parts of the power tool “live” and could give the operator an electric shock.*
- d. Always wear a dust mask.**
- e. Persons under 16 years of age are not permitted to operate this machine.**
- f. Keep the tool and accessories out of the reach of children.**
- g. Always check walls and ceilings to avoid hidden power cables and pipes.**

- h. After long working periods, external metal parts and accessories could be hot.*
- i. Wear eye protection when operating this tool.*
- j. When using this product it is essential that the following rules for use are followed:*
- When drilling it is common that the core / drill bit jams in the material being drilled. This will result in the drill trying to rotate around the drill bit and potentially come out of your grip. This product has a safety clutch mechanism. This safety clutch mechanism will be activated and stop the drive to the drill bit BUT only if you resist the initial forces caused by the jamming by securely holding the drill with both hands.*
  - ALWAYS ensure that the auxiliary handle is firmly affixed and secure.*
  - The auxiliary and main handle must be firmly held to resist any movement of the product when the core drill or drill bit becomes jammed.*
  - ALWAYS use this drill when standing on a firm and secure platform or the ground. (DO NOT USE ON LADDERS OR STEPS.)*
  - NEVER start the product with the core or drill jammed in position.*
  - DO NOT stretch to hold the product. Do not drill above shoulder height or below knee height, as the product cannot be securely held.*

The following information applies to professional users only but is good practice for all users:

### **ADDITIONAL SAFETY WARNING FOR CONSTRUCTION DUST**

The updated Control of Substances Hazardous to Health Regulations 1st October 2012 now also targets to reduce the risks associated with silica, wood and gypsum dusts. Construction workers are one of the at-risk groups within this because of the

dust that they breathe: silica dust is not just a nuisance; it is a real risk to your lungs!

Silica is a natural mineral present in large amounts in things like sand, sandstone and granite. It is also commonly found in many construction materials such as concrete and mortar. The silica is broken into very fine dust (also known as Respirable Crystalline Silica or RCS) during many common tasks such as cutting, drilling and grinding. Breathing in very fine particles of crystalline silica can lead to the development of: Lung cancer, Silicosis, Chronic Obstructive Pulmonary Disorder, Chronic obstructive pulmonary disease (COPD). And breathing in fine particles of wood dust can lead to the development of Asthma. The risk of lung disease is linked to people who regularly breathe construction dust over a period of time, not on the odd occasion.

To protect the lung, the COSHH Regulations sets a limit on the amount of these dusts that you can breathe (called a Workplace Exposure Limit or WEL) when averaged over a normal working day. These limits are not a large amount of dust: when compared to a penny it is tiny – like a small pinch of salt. This limit is the legal maximum; the most you can breathe after the right controls have been used.

## **HOW TO REDUCE THE AMOUNT OF DUST?**

1. Reduce the amount of cutting by using the best sizes of building products. Use a less powerful tool e.g. a block cutter instead of angle grinder.
2. Using a different method of work altogether – e.g. using a nail gun to direct fasten cable trays instead of drilling holes first.
3. Please always work with approved safety equipment, such as those dust masks that specially designed to filter out microscopic particles and use the dust extraction facility at all time.

For more information please see the HSE website: <http://www.hse.gov.uk/construction> or <http://www.hse.gov.uk/pubns/cis69.pdf>



**WARNING!** Some dust particles created by power sanding, sawing, grinding, drill and other construction jobs contain chemicals known to cause cancer, birth defects or other reproductive harm. Some examples of these chemicals are:

- Lead from lead-based paints.
- Crystalline silica from bricks and cement and other masonry products.
- Arsenic and chromium from chemically treated timber.
- Your risk from these exposures varies, depending upon how often you do this type of work. To reduce your exposure to these chemicals:
- Work in a well-ventilated area.
- Work with approved safety equipment, such as those dust masks that are specially designed to filter microscopic particles.

## VIBRATION

The European Physical Agents (Vibration) Directive has been brought in to help reduce hand arm vibration syndrome injuries to power tool users. The directive requires power tool manufacturers and suppliers to provide indicative vibration test results to enable users to make informed decisions as to the period of time a power tool can be used safely on a daily basis and the choice of tool.

### **SEE TECHNICAL SPECIFICATIONS IN THE INSTRUCTION MANUAL FOR THE VIBRATION LEVELS OF YOUR TOOL.**

The declared vibration emission value should be used as a minimum level and should be used with the current guidance on vibration.

Calculating the actual period of use can be difficult and the HSE website has further information.

The declared vibration emission been measured in accordance with EN 60745-1& EN 60745-2-6 and may be used to compare one tool with another tool.

The declared vibration emission value may also be used in preliminary assessment of exposure.



**WARNING!** The vibration emission value during actual use of the power tool can differ from the declared value depending on the ways in which the tool is used dependant on the following examples and other variations on how the tool is used:

- How the tool is used and the materials being cut or drilled.
- The tool being in good condition and well maintained.
- Use the correct accessories for the tool and ensure they are sharp and in good condition.
- The tightness of the grip on the handles.
- The tool is being used as intended by its design and these instructions.



**WARNING!** Identify safety measures to protect the operator that are based on an estimation of exposure in the actual conditions of use (taking account of all parts of the operating cycle such as the times when the tool is switched off and when it is running idle in addition to the trigger time).

While working with this power tool, hand/arm vibrations occur. Adopt the correct working practices in order to reduce the exposure to vibration. This tool may cause hand-arm vibration syndrome if its use is not adequately managed.

Helping to minimise your vibration exposure risk. ALWAYS use sharp chisels, drills and blades.

EN

Maintain this tool in accordance with these instructions and keep well lubricated (where appropriate).

Avoid using tools in temperatures of 10°C or less. Plan your work schedule to spread any high vibration tool use across a number of days.



**NOTE:** The use of other tools will reduce the users' total working period on this tool.

## HEALTH SURVEILLANCE

All employees should be part of an employer's health surveillance scheme to help identify any vibration related diseases at an early stage, prevent disease progression and help employees stay in work.

## TORQUE LIMITER

There is a clutch in your rotary hammer.

The torque limiter will actuate when a certain torque level is reached. The motor will disengage from the output shaft. When this happens, the bit will stop turning.


As soon as the torque limiter actuates, switch off the tool immediately and remove the drill bit from the hole completely. This will help prevent premature wear of the tool.



## PRODUCT DESCRIPTION

1. Dust Protection Cap
2. Tool Holder Locking Sleeve
3. Depth stop
4. Forward / Reverse Rotation Control
5. Switch Lock-On Button
6. Main handle
7. On/Off Switch With Variable Speed Control
8. Speed dial
9. Function Mode Selection Switch
10. Quick clamp
11. Auxiliary Handle
- 11a. Hand grip
12. Dust cover

## 01 TECHNICAL SPECIFICATIONS

Rated voltage, frequency:	220 – 240 V~, 50 Hz
Rated power input:	750 W
Rated no load speed $n_0$ :	0 - 1000/min
Impact rate:	0 - 5300/min
Impact energy	3.0J
Protection class:	II / 
Drilling capacity max:	
Masonry	26mm
Steel	13mm
Wood	30mm
Weight:	3.3kg

### NOISE DATA

A weighted sound pressure:	$L_{pA}$ : 94.3dB(A)
A weighted sound power:	$L_{WA}$ : 105.3dB(A)
Uncertainty	$K_{pA}$ & $K_{WA}$ = 3.0dB(A)

The noise for the operator may exceed 80 dB(A) and ear protection measures are necessary.



Vibration total values (triax cover sum) determined according to EN 60745:

**VIBRATION DATA**

Hammer drilling into concrete

$$a_{h,HD} = 14.5\text{m/s}^2$$

Chiselling

$$a_{h,CHeq} = 14.4\text{m/s}^2$$

Uncertainty

$$K = 1.5\text{m/s}^2$$

**RATING LABEL EXPLANATION**

**ERH750 = MODEL NUMBER**

**E = ERBAUER**

**RH = ROTARY HAMMER**

**750 = POWER (WATTS)**





## ASSEMBLY

### 01 SYMBOLS



Read the instruction manual



Wear eye protection



Wear protective gloves.



Wear hearing protection.



Wear a dust mask.



Wear protective, slip resistant footwear. Switch the product off and disconnect it from the power supply before assembly, cleaning, adjustments, maintenance, storage and transportation.



Class II tool



SDS Plus Chuck



3 metre Power Cord Length



Anti-Vibration Auxiliary Handle

yyWxx

Manufacturing date code: Year of manufacturing (20yy) and week of manufacturing (Wxx)

## 02 UNPACKING

Unpack all parts and lay them on a flat, stable surface.

- Remove all packing materials and shipping devices, if applicable.
- Make sure the delivery contents are complete and free of any damage. If you find that parts are missing or show damage do not use the product but contact your dealer. Using an incomplete or damaged product represents a hazard to people and property.
- Ensure that you have all the accessories and tools needed for assembly and operation. This also includes suitable personal protective equipment



**WARNING!** The product and the packaging are not children's toys!

Children must not play with plastic bags, sheets and small parts! There is a danger of choking and suffocation!

## 03 ASSEMBLING THE MACHINE

### INSERTING AND REMOVING DRILL BIT IN SDS (A)

Take care that the dust protection cap (1) is not damaged when changing tools.

#### INSERTING

Clean and lightly oil the bit before inserting.

Pull back the bit holder locking sleeve (2) and insert the dust-free bit into the bit holder with a twisting motion until it latches.

Release the lock sleeve. Check the locking by pulling on the bit.



**NOTE:** This tool is only to be used with SDS PLUS drill bits unless an additional keyed chuck adaptor (not supplied) is used.



**WARNING!** Your new Rotary Hammer generates powerful forces to get your job done quickly and effectively. These forces may cause inferior quality SDS bits to break and jam in the chuck.

We therefore recommend that only high quality SDS bits be used with this tool.

#### REMOVING

Retract back the bit holder locking sleeve (2) and pull out the bit.

## AUXILIARY HANDLE (B)

Slide the handle onto the hammer and rotate to the desired working position. To clamp the auxiliary handle, rotate the handle clockwise. To loosen the auxiliary handle, rotate the handle anti-clockwise.



**WARNING!** Always use the auxiliary handle.

## DEPTH STOP (C)

- Depress the quick clamp (10) then insert the depth stop (3) through the hole. Make sure the rippled part is on the bottom side.
- Align the tip of the depth stop (3) with the drill tip. Now pull the depth stop (3) back by the required drilling depth.
- Release the quick clamp (10) to lock the depth stop (3) in position.

## CONNECTION TO POWER SUPPLY

- Make sure the on/off switch (7) is in its off position.
- Connect the plug to a suitable socket.



**WARNING!** Check the voltage! The voltage must comply with the information on the rating label!

- Your product is now ready to be used.

EN



## USE

### 01 INTENDED USE

The machine is intended for hammer drilling in concrete, brick and stone as well as for light chiseling work. It is also suitable for drilling without impact in wood, metal, ceramic and plastic.



**WARNING!** Always switch the product off and disconnect it from power supply before making any adjustments!

### 02 OPERATION

#### ON/OFF SWITCH WITH VARIABLE SPEED CONTROL

Depress to start and release to stop your tool. This tool has a variable speed switch (7) that delivers higher speeds with increased trigger pressure - speed is controlled by varying the pressure applied to the switch.

#### SWITCH LOCK-ON BUTTON (D)

Depress the on/off switch (7) then the lock on button (5); Release the on/off switch first and the lock-on button second. Your switch is now locked on for continuous use. To switch off your tool just depress and release the on/off switch.

#### SPEED DIAL (E)

Limit the maximum speed using the speed dial (8). The variable speed device enables you to select the best speed for a particular application

- Turn the speed dial (8) in plus direction "+" to increase the maximum speed.
- Turn the speed dial (8) in minus direction "-" to decrease the maximum speed.

#### FORWARD AND REVERSE ROTATION CONTROL (F)

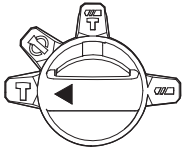
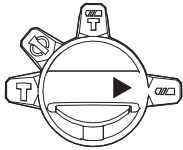
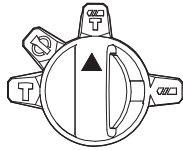
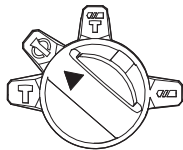
With the drill pointing away from you, push the forward/reverse rotation control (4) to the left for forward rotation. Push the forward/reverse rotation control (4) to the right for reverse rotation



**WARNING!** Never change the direction of rotation while the tool is rotating, wait until it has stopped.

## FUNCTION MODE SELECTION

The operation of the gearbox for each application is set with the function mode selection switch (9). To change between functions, depress the unlocking button and rotate the selector to the desired operating mode.

	<p>For impacting only - for light chipping, chiseling and demolition applications choose the Hammer position.</p>
	<p>For drilling into steel, wood and plastics choose the Rotary drilling position.</p>
	<p>For simultaneous drilling and impacting of concrete or masonry, choose the Hammer drilling position.</p>
	<p>Adjustable working angle when using flat chisel. (The tool must not be operated when the switch is in that position)</p>

## WORKING HINTS FOR YOUR HAMMER

If your power tool becomes over heated, set the speed to maximum and run no load for 2-3 minutes to cool the motor. SDS-plus tungsten carbide drill bits should always be used for concrete and masonry.

When drilling in metal, only use HSS drill bits in good condition. Where possible use a pilot hole before drilling a large diameter hole.

EN



+



## CARE & MAINTENANCE

### THE GOLDEN RULES FOR CLEANING



**WARNING!** Always switch the product off, disconnect the product from the power supply and let the product cool down before performing inspection, maintenance and cleaning work!

- Keep the product clean. Remove debris and dust from it after each use and before storage.
- Regular and proper cleaning will help ensure safe use and prolong the life of the product.



**WARNING!** Only perform repairs and maintenance work according to these instructions! All further works must be performed by a qualified specialist!

- Inspect the product before each use for worn and damaged parts. Do not operate it if you find broken and worn parts.

### GENERAL CLEANING

- Clean the product with a dry cloth. Use a brush for areas that are hard to reach.
- In particular clean the air vents after every use with a cloth and brush.
- Remove stubborn dirt with high pressure air (max. 3 bar).



**WARNING!** Do not use chemical, alkaline, abrasive or other aggressive detergents or disinfectants to clean this product as they might be harmful to its surfaces.

- Check for worn or damaged parts. Replace worn parts as necessary or contact an authorised service centre for repair before using the product again.

### MAINTENANCE

Before and after each use, check the product and accessories (or attachments) for wear and damage. If required, exchange them for new ones as described in this instruction manual. Observe the technical requirements.

## POWER CORD

If the replacement of the supply cord is necessary, this has to be done by the manufacturer or his agent in order to avoid a safety hazard.

### PLUG REPLACEMENT

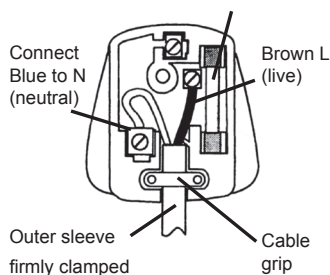
If you need to replace the fitted plug, then follow the instructions below.

**IMPORTANT:** The wires in the mains lead are coloured in accordance with the following code:

#### Blue – Neutral Brown – Live

As the colours of the wire in the mains lead of this product may not correspond with the coloured marking identifying the terminals in your plug, proceed as follows. The wire, which is coloured blue, must be connected to the terminal, which is marked with N or coloured black. The wire, which is coloured brown, must be connected to the terminal, which is marked L or coloured red.

13AMP fuse approved to BS 1362



**WARNING!** Never connect live or neutral wires to the earth terminal of the plug, which is marked with E.

Only fit an approved 13 Amp BS1363 or BS1363/A plug and the correctly rated fuse. If in doubt, consult a qualified electrician.



**NOTE:** If a moulded plug is fitted and must be removed take great care in disposing of the plug and severed cable, it must be destroyed to prevent engaging into a socket.

EN

## RECYCLING AND DISPOSAL



Waste electrical products should not be disposed of with household waste. Please recycle where facilities exist. Check with your Local Authority or retailer for recycling advice.

For further information visit [www.recycle-more.co.uk](http://www.recycle-more.co.uk)

## REPAIR

This product does not contain any parts that can be repaired by the consumer. Contact a qualified specialist to have it checked and repaired.

## STORAGE

- Clean the product as described above.
- Store the product and its accessories in a dry, frost-free place.
- Always store the product in a place that is inaccessible to children. The ideal storage temperature is between 10 and 30°C.
- We recommend using the original package for storage or covering the product with a suitable cloth to protect it against dust.

## TRANSPORTATION

- Switch the product off and disconnect it from power supply before transporting it any where.
- Attach transportation guards, if applicable.
- Secure the product to prevent it from slipping or falling over.
- Protect the product from any heavy impact or strong vibrations which may occur during transportation in vehicles.





## GUARANTEE

At **Erbauer** we take special care to select high quality materials and use manufacturing techniques that allow us to create ranges of products incorporating design and durability. That's why we offer a 2 year trade guarantee against manufacturing defects on our **Erbauer** power tool products.

This power tool is guaranteed for 2 years from the date of purchase, if bought in store, delivered or bought online. You may only make a claim under this guarantee upon presentation of your sales receipt or purchase invoice. Please keep your proof of purchase in a safe place.

This guarantee covers product failures and malfunctions provided the **Erbauer** power tool was used for the purpose for which it is intended and subject to installation, cleaning, care and maintenance in accordance with standard practice and with the information contained above and in the user manual. This guarantee does not cover defects and damage caused by or resulting from:

- Normal wear and tear, including accessory wear
- Overload, misuse or neglect
- Repairs attempted by anyone other than an authorised agent
- Cosmetic damage
- Damage caused by foreign objects, substances or accidents
- Accidental damage or modification
- Failure to follow manufacturer's guidelines
- Loss of use of the goods

This guarantee is limited to parts recognised as defective. It does not, in any case, cover ancillary costs (movement, labour) and direct and indirect damage.

If the **Erbauer** power tool is defective during the guarantee period, then we reserve the right, at our discretion, to replace the item with a product of equivalent quality and functionality or to provide a refund.

This guarantee only applies to the country of purchase or delivery and is not transferrable to any other countries. This guarantee is non-transferrable to any other person or product. Relevant local law will apply to this guarantee.

Guarantee related queries should be addressed to a store affiliated with the distributor you purchased the **Erbauer** power tool from.

This guarantee is in addition to and does not affect your statutory rights relating to faulty goods as a consumer.

EN



## DECLARATION OF CONFORMITY



### EU Declaration of Conformity

**We**  
**Kingfisher International Products B.V.**  
**Rapenburgerstraat 175E**  
**1011 VM Amsterdam**  
**The Netherlands**

Declare that the product:  
Erbauer 750W rotary hammer ERH750  
Serial number 00001-99999

Complies with the essential health and safety requirements of the following directives:

2006/42/EC The Machinery Directive  
References to the following harmonized standard were made:  
EN 60745-1:2009+A11:2010  
EN 60745-2-6:2010

2014/30/EU Electromagnetic Compatibility directive  
References to the following harmonized standard were made:  
EN55014-1:2017  
EN55014-2:2015  
EN 61000-3-2:2014  
EN 61000-3-3:2013

(EU) 2015/863 amending 2011/65/EU Restrictions of the Use of Certain Hazardous Substances in Electrical and Electronic Equipment

Authorised signatory and technical file holder:

Kingfisher International Products B.V.  
Rapenburgerstraat 175E  
1011 VM Amsterdam  
The Netherlands

on: 18/09/2019

Eric Capotummino  
Group Quality Director



**Manufacturer • Fabricant • Producent • Producător • Fabricante:**

**UK manufacturer:**

Kingfisher International Products Limited  
3 Sheldon Square London W2 6PX  
United Kingdom  
[www.kingfisher.com/products](http://www.kingfisher.com/products)

**EU manufacturer:**

Kingfisher International Products B.V.  
Rapenburgerstraat 175E  
1011 VM Amsterdam  
The Netherlands

[www.diy.com](http://www.diy.com) | [www.screwfix.com](http://www.screwfix.com) | [www.screwfix.ie](http://www.screwfix.ie)

To view instruction manuals online,  
visit [www.kingfisher.com/products](http://www.kingfisher.com/products)

Customer Helpline (Freephone)

UK 0800 324 7818 [uk@kingfisherservice.com](mailto:uk@kingfisherservice.com)

Eire 1800 932 230 [eire@kingfisherservice.com](mailto:eire@kingfisherservice.com)