



40cm (16") 123cc Push Petrol Lawnmower

WER40HPSFX
1938292002

en - Original Instructions

ASSEMBLY REQUIRED
Minimum Two Persons

Save these instructions
Sales & Support: 01793 333212

Before use please read & understand this manual; paying particular attention to the safety instructions before use.
Incorrect use of the product could put the operator or machine in danger.
Whilst every effort has been made to ensure the accuracy of information contained in this manual, our policy of continuous improvement determines the right to make modifications without prior warning.
Images are used for illustration purposes only.



INSTRUCTION MANUAL



18 January 21

Copyright Notice

Copyright © Handy Distribution

Permission is granted to reproduce this publication for personal & educational use only.

Commercial copying, redistribution, hiring or lending is prohibited.

No part of this publication may be stored in a retrieval system or transmitted in any other form or means without written permission from Handy Distribution.

In all cases this copyright notice must remain intact.

CONTENTS

INTENDED USE

SAFETY INSTRUCTIONS

SPECIFICATIONS

KNOW YOUR MACHINE/ENGINE

ASSEMBLY

OPERATION

MAINTENANCE, CLEANING & STORAGE

TROUBLE SHOOTING

PARTS DIAGRAM & LIST

DECLARATION OF CONFORMITY

WARRANTY

INTENDED USE

This machine is to be used exclusively for cutting natural grass. Never use the mower for other purposes. Any other use can endanger for your safety and can involve damage to the mower. Persons under 16 years of age and persons who are not familiar with the user instructions must not use the mower.

The user is responsible of the safety of other people in the working area. Keep children and domestic animals at a safe distance while the mower is in use.

Before mowing, remove all foreign objects from the lawn which may be thrown by the machine, stay alert for any foreign objects which may have been missed.

These operating instructions must be kept and referred to in order to ensure that the equipment is properly used and maintained. The instructions contain valuable information on operating, maintenance and servicing conditions.



WARNING

The equipment is to be used only for its prescribed purpose. Any other use is deemed to be a case of misuse. The user/operator and not the manufacturer will be liable for any damage or injuries of any kind caused as a result of this.

Please note that our equipment has not been designed for use in commercial, trade or industrial applications. Our warranty will be 90 days from the original date of sale for commercial, trade or industrial businesses or for equivalent purposes.



INSTRUCTION MANUAL

SAFETY INSTRUCTIONS

Read and understand the owner's manual and labels affixed to the machine. Learn its application and limitations as well as the specific potential hazards. Retain these instructions for future reference. The operator is responsible for following the warnings & instructions in this manual and on the product.

	Read & understand operator's manual before using the machine. Failure to follow instructions could result in death or serious injury. Please keep in a safe place for future reference.		Always wear eye and ear protection when in operation.
	Keep all bystanders & animals away from the machine during operation. If approached, stop the machine immediately.		Always wear gloves to protect your hands. Wear foot protection or sensible shoes when using the machine SHARP ROTATING BLADES
	Risk of Carbon Monoxide Poisoning. Ensure working area is correctly ventilated.		When repairing, servicing or undertaking general maintenance and cleaning, please remove the spark plug cap from the spark plug.
	Fire Risk Fire and its vapors are extremely flammable & explosive. Fire or explosion can cause severe burns or death.		Do not expose to rain or damp conditions.
	No smoking		Do not use near a flame, or sparks
	Hot Surface. Running engines produce heat. Engine parts, especially the exhaust, become extremely hot. Severe thermal burns can occur on contact		Moving Parts Rotating parts can contact or entangle hands, feet, hair, clothing or accessories. Traumatic amputation or severe laceration can result
	Keep guards in place and in working order. Replace damaged, missing or failed parts before using it.		Safety alert symbol. Used to alert you to potential personal injury hazards. Obey all safety messages that follow this symbol to avoid possible injury.
	Indicates an imminently hazardous situation which, if not avoided, will result in serious injury		Indicates a potentially hazardous situation which, if not avoided, could result in serious injury
	Indicates a potentially hazardous situation which, if not avoided, may result in minor or moderate injury.	CAUTION	Used without the safety alert symbol indicates a potentially hazardous situation which, if not avoided, may result in property damage.
	CE Marking - the product meets demand and regulations set by the EU		Noise Level - See label on machine

GENERAL SAFETY RULES



Before you put the machine into operation, you must read this instruction manual. When using this machine, observe the following safety instructions to exclude the risk of personal injury or material damage. Please also observe the special safety instructions in the respective chapters. Where applicable, follow the legal directives or regulations for the prevention of accidents in relation to the use of this machine.



WARNING

When using petrol tools, basic safety precautions, should always be followed to reduce the risk of serious personal injury and/or damage to the unit.

TRAINING



The operator must receive proper training in the use, adjustment and operation of the machine, including prohibited operations.

1. Read the instructions carefully. Be familiar with the controls & proper use of the equipment. Spend time to familiarise yourself with your machine before each use.
2. Never allow children or people unfamiliar with these instructions to use the machine. Local regulations can restrict the operator age.
3. This machine is not intended for use by persons (including children) with reduced physical, sensory or mental capabilities, or lack of experience and knowledge, unless they have been given supervision or instruction concerning use of the machine by a person responsible for their safety.
4. Never work while people, especially children, or pets are nearby.
5. The operator or user is responsible for accidents or hazards occurring to other people or their property.

SAFETY INSTRUCTIONS FOR WORKING

1. Do not leave engines running in enclosed spaces, where dangerous carbon monoxide could accumulate.
2. Operate in daylight or good artificial lighting. If possible, do not use on overly wet ground.
3. Ensure good stability on slopes. Always operate across the slope, never up and down.
4. Be particularly careful if changing direction of travel on the slope.
5. Do not operate on steep slopes.
6. Operate whilst walking, do not run.
7. Be particularly careful when you turn or when you pull the machine towards you.
8. Stop the engine and blade, if it is to travel across other areas or must be transferred to/from working area.
9. Never use the machine with damaged safety protection guards.
10. Do not change the engine regulation set up. (This should only be undertaken by a skilled technician).
11. Carefully start the engine. Keep your feet clear of the blade.
12. Never reach behind or under the rotating parts with hands or feet.
13. Never lift or carry the machine while the engine is on.
14. Switch the engine off and remove the spark plug cap out before unblocking or removing obstacles from the blade or exit chute:
 - Before releasing blockages, inspecting, cleaning or working on the machine.
 - After hitting an obstruction. Search for damage on the machine & make repairs as necessary. If the machine starts vibrating unusually, it should be inspected by an Approved Webb Service Dealer.



INSTRUCTION MANUAL

15. Switch the engine off:
 - If you remove blockages from the machine.
 - Before refueling.

WORK AREA

1. Keep work area clean and well lit. Cluttered and dark areas invite accidents.
2. Check the landscape where the machine will be used and remove all objects such as stones, toys, sticks and wires, which could be caught and thrown away from the work area. Damage of the machine or operator's injury could be caused.
3. Do not operate this machine in explosive atmospheres, in the presence of flammable liquids, gases or dust. Machines create sparks which may ignite the dust or fumes.
4. Keep children & bystanders away while operating the machine. Distractions can cause you to lose control.

PERSONAL SAFETY

1. This machine is not intended for use by persons (including children) with reduced physical, sensory or mental capabilities, or lack of experience and knowledge, unless they have been given supervision or instruction concerning use of the machine by a person responsible for their safety.
2. Children should be supervised to ensure that they do not use or play with the machine.
3. Stay alert, watch what you are doing and use common sense when operating this machine.
4. Do not use this machine while you are tired, ill or under the influence of drugs, alcohol, or medication. A moment of inattention while operating this machine can cause you to lose control & may result in series personal injury.
5. Do not overreach. Always keep proper footing and balance. This enables better control of the tool in unexpected situations.
6. Remove any adjusting tools before turning the machine on. A tool that is left attached to a rotating part of the machine may result in personal injury.
7. Use safety equipment. Always wear eye protection. Safety equipment such as a dust mask, non-skid safety shoes, hard hat, or hearing protection used for appropriate condition will reduce personal injuries.
8. Dress properly. Do not wear loose clothing or jewellery. Keep your hair, clothing & gloves away from moving parts. Loose clothes, jewellery or long hair can be caught in moving parts. Wear foot protection or sensible shoes when using the machine.
9. Prolonged use of the machine may lead to disorders of blood circulation in hands caused by vibration. These effects can be worsened by low ambient temperatures and/or by gripping the handgrips excessively tightly. Period of use you can extend with appropriate gloves or regular breaks. Take frequent work breaks. Limit the amount of exposure per day.

PETROL TOOL USE AND CARE



WARNING!

Petrol is highly flammable and explosive.

1. Store petrol in containers specifically designed for this purpose.
2. Refuel outdoors only and do not smoke while refueling.
3. Add fuel before starting the engine. Never remove the cap of the tank or add petrol while the engine is running or when the engine is hot.
4. If petrol is spilled, do not attempt to start the engine but move the machine away from the area of spillage and avoid creating any source of ignition until petrol vapors have dissipated.
5. Replace fuel tank & container caps securely.
6. Do not operate the engine in a confined space where dangerous carbon monoxide can collect.
7. Do not force the machine. Use the correct machine for your application. The correct machine will do the job better and safer at the rate for which it was designed.
8. Do not use the machine if the main OPC/Brake lever does not work to turn the machine off. Any machine

- that cannot be controlled with the OPC/Brake lever is dangerous and must be repaired.
9. Turn machine off completely before making any adjustments, changing accessories, or storing. Such preventive safety measures reduce the risks of starting the petrol tool accidentally.
 10. Store idle machines out of the reach of children and do not allow persons unfamiliar with the machine or these instructions to operate. Petrol machines are dangerous in the hands of untrained users.
 11. Maintain your machine. Check for misalignment or binding of moving parts, breakage of parts & any other condition that may affect the operation. If damaged, have the machine repaired by an Approved Webb Service Dealer immediately. Many accidents are caused by poorly maintained machines.
 12. Use the machine, accessories and tool bits etc., in accordance with these instructions and in the manner intended for the particular type of petrol machine, taking into account the working conditions and the work to be performed. Use of the machine for operations different from intended could result in a hazardous situation.

PERSON PROTECTION

1. In case of any injury always proceed in accordance with the principles of first aid.
2. If someone is cut, cover the wound with a clean cloth & press hard to stop the flow of blood.
3. Do not let petrol or oil come in contact with your skin. Keep petrol and oil away from the eyes. If petrol or oil come into contact with the eyes, wash them immediately with clean water. If irritation is still present, see a doctor immediately.
4. Individuals with poor circulation who are exposed to excessive vibration may experience injury to blood vessels or the nervous system. Vibration may cause the following symptoms to occur in the fingers, hands or wrists: numbness, tingling, pain, stabbing sensation, alteration of skin colour or of the skin. If any of these symptoms occur, see a doctor.

Put safety first in the case of fire:

5. If fire comes from the engine or smoke appears from anywhere other than the exhaust vent, at first distance yourself from the product to ensure your physical safety.
6. Use a dry powder fire extinguisher on the fire to prevent it from spreading.
7. A panicked reaction could result in the fire and other damage becoming more extensive.



INSTRUCTION MANUAL

SPECIFICATIONS

Model	WER40HPSFX
Product Number	1938292001
Working Width	405mm (16")
Drive Type	Hand Push
Cutting Heights	25-65mm
Collector Capacity	40L
Deck	Steel
Front / Rear Wheel	6in / 7in
Engine	Loncin 1P65FE-4 Petrol, 4-Stroke, Single Cylinder Horizontal (OHV)
Engine Displacement	123cm ³
Rated Engine Power	2.1 kw
Rated Engine Speed	2800 rpm
Full Tank Capacity	1.0L
Oil Tank Capacity	0.5L
Guaranteed Sound Power Level L _{WA}	93 dB(A)
Sound Pressure Level L _{PA}	71 dB(A) - K=3.0 dB(A)
Vibration a _{hv} :	3.120 m/s ² - K= 1.5 m/s ²

The manufacturer reserves the right to change the product specification and livery according to continued product improvements.



KNOW YOUR MACHINE

1. OPC/Brake Lever	2. Upper Handle
3. Handle Fixing Knob	4. Lower Handle
5. OPC/Brake Cable	6. Rear Wheel (7in)
7. Single Height Adjuster	8. Steel Deck
9. Front Wheel (6in)	10. 40L Grass Collector
11. Bumper Bar	12. 123cc Loncin (1P65FE-3) Engine (4-Stroke Petrol)





INSTRUCTION MANUAL

ASSEMBLY

Remove the machine (**Two-person lift**) and contents from the carton. Be sure the carton is empty before discarding. If you require any assistance with regards to the contents of the machine, contact us:

Tel: 01793 333212 - Mon – Fri 8.00am – 5.30pm (excl. Bank Holidays)

Email: customerservice@webbgardenpower.co.uk

IMPORTANT INFORMATION

NOTE: This product is a 4-stroke engine powered machine.

The engine MUST be filled with recommended 4-stroke SAE30 or 10W/30 air cooled lawnmower engine oil BEFORE starting. Fresh unleaded petrol must be used in this unit. DO NOT use Ethanol based fuels. DO NOT mix oil with fuel.



WARNING

Stop the engine and unplug the spark plug before any repairs or maintenance operations.

DO NOT attempt to start this machine without it first being FULLY assembled.

DO NOT attempt to start this mower without first adding 4-stroke SAE30 or 10W/30 air cooled lawnmower engine oil to the engine.

HANDLES

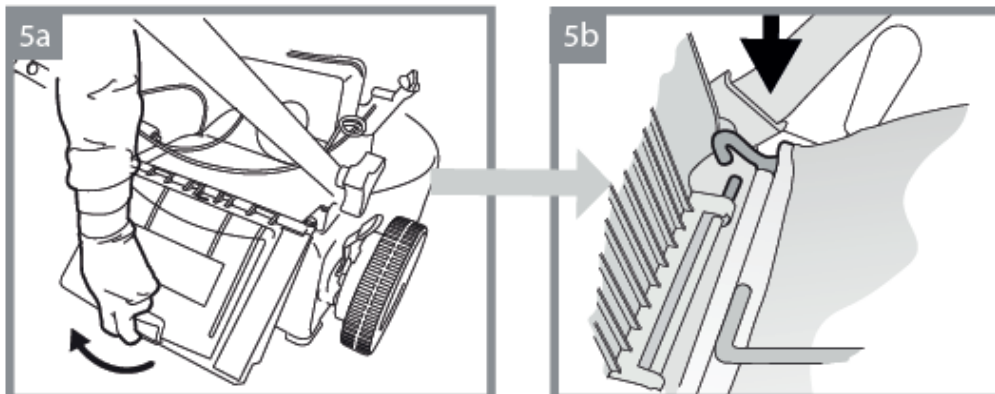
1. Place the lower handle in position by aligning the lower handle with the lug located on the outside of the metal mounting plates, located at the back of the mower deck.
2. Once in position, insert the handle bolt through the lower handle and mounting plate.
3. Once the bolt is in position, attach the fixing lock nut and secure with the appropriate sized spanner and ensure fully tightened. Repeat on the other side.
4. Position the upper handle over the lower handles, ensuring the OPC/Brake lever is at the front. Align the hole in the upper handle with those in the lower handles. Insert the handle bolt through the lower handle, then through the upper handle hole.
5. Then attach the handle knob on the outer side of the upper handle and secure until tight. Repeat on the other side.

CABLE CLIP

1. Place the cable clip over the handle assembly and house the cables into the clip.

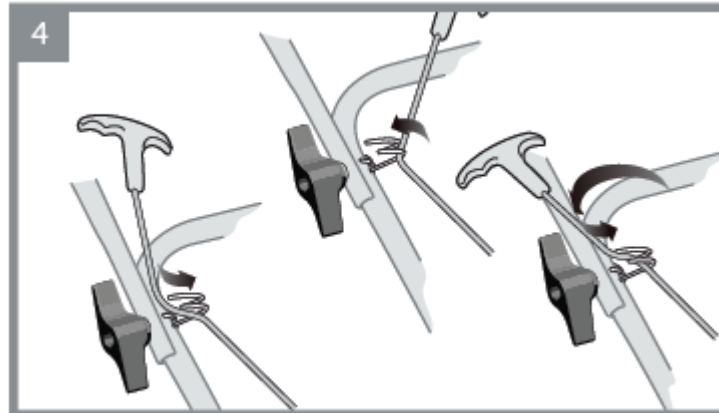
GRASS COLLECTOR

1. Left the grass collector flap up, so that it opens past the handle assembly. Hold in position and place the grass collector hooks over the springs and place into position.
2. Lower the grass collector flap to sit onto the grass collector.



RECOIL STARTER HANDLE

1. To ease starting of the machine, the recoil starter handle is provided with a housing on the handle assembly.
2. To house it correctly, pull the OPC/Brake lever towards the main handle. Do not let go.
3. Now grab the recoil starter handle and slowly lift it towards the housing. There will be some resistance and do not pull too hard. Wrap the Starter rope through the housing and seat the recoil starter housing.
4. You can now release the OPC/Brake lever.



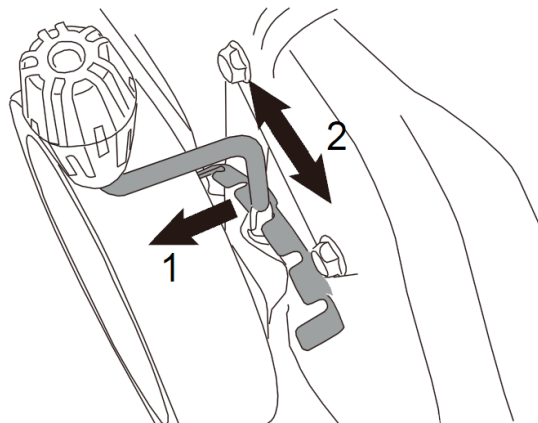
(Please note, this image has been used for information purposes only and may differ from the actual machine)

HEIGHT OF CUT

To adjust the height of cut, the machine has been supplied with a single lever, located at the right rear wheel. Adjusting the height of cut should only be undertaken when the engine is off, and the blade has come to a complete standstill.

To adjust the height of cut, grab the height of cut lever and push it away from the gauge (1) and then lift or lower the lever to the required height of cut (2).

Moving the lever forward will higher the height of cut (Min. 25mm). Moving the backwards, will lower the height of cut (Max. 65mm)



NOTE: For rough or uneven lawns, move the height adjustment lever to a higher position. It is also recommended should your grass be long, that you cut in stages, starting high and working down to a lower height of cut.



INSTRUCTION MANUAL

FUEL & OIL

ALWAYS REFER TO THE SEPARATE ENGINE MANUAL SUPPLIED WITH YOUR MACHINE.



WARNING

YOUR MACHINE IS SUPPLIED WITHOUT ENGINE OIL OR PETROL

Operating the engine with insufficient oil, can have catastrophic consequences. Any failure caused by insufficient oil, will not be covered by the manufacturer's warranty.

READ INSTRUCTIONS CAREFULLY.



Fuel & its vapors are very flammable. Do not use or fuel the machine near a flame, sparks or while smoking.

Allow the engine to cool for more than 3 minutes, before re-fueling. Never fuel the machine with engine running. Fuel the engine at least 15 metres away from your work area. Always fuel your machine outdoors.

IMPORTANT:

Fuel which is older than 30 days old can become stale and cause acid & gum deposits in the fuel system or essential carburettor components. This could result in starting issues which would not be covered by your manufacturer's warranty.

Ensure that any stored petrol is clearly marked in a separate appropriate canister for a maximum of 30 days, if not mixed with a fuel additive. If the machine is not going to be used for a long period, drain the fuel tank, start the engine and drain the carburetor of any remaining fuel.

To keep fuel fresh, we recommend you use SURE-START FUEL ADDITIVE (HP-199) from Handy Parts. A fuel additive added to your fuel at the time of purchase, will help make your machine easier to start, extend the shelf life of your fuel mixture for up to two years, keeps the carburettor & engine clean, plus reduces emissions and increases fuel economy. A 250ml bottle of SURE-START FUEL ADDITIVE will treat 25 litres of fuel. Only use 4-stroke SAE30 or 10W/30 air cooled lawnmower engine oil. **DO NOT USE** automotive or marine oil.

FUELING THE MACHINE

Place machine onto a solid flat surface, ensure the engine is not running. Let the engine rest for a minimum of two minutes. Fill the fuel tank outdoors or in well-ventilated areas.

Unscrew the fuel cap slowly and fill the fuel tank with clean, less than 30 days old unleaded petrol with an Octane rating of 87 (91 RON) or higher. Fill to a maximum of 80% capacity. This will allow the fuel tank to expand. Fasten the fuel cap tightly, being careful not to cross-thread. This will also prevent loosening through vibration during use. Wipe away any spillage, with an appropriate material. If the machine has continued leaks, the product should not be started. Never use the machine with damaged ignition cable or spark plug cap, as there is a risk of sparks.



WARNING

Fuel and its vapors are extremely flammable and explosive. Fire or explosion can cause severe burns or death.

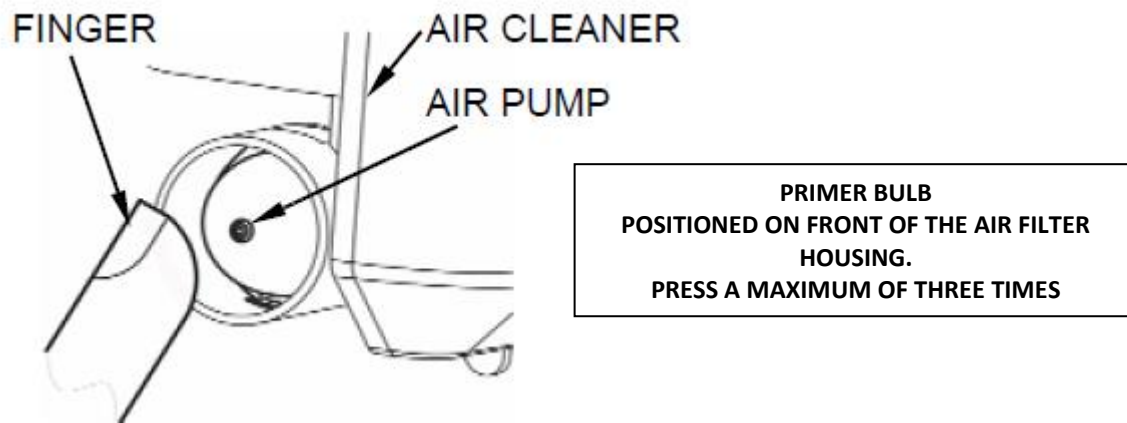
OPERATION

ENGINE STARTING & STOPPING PROCEDURE

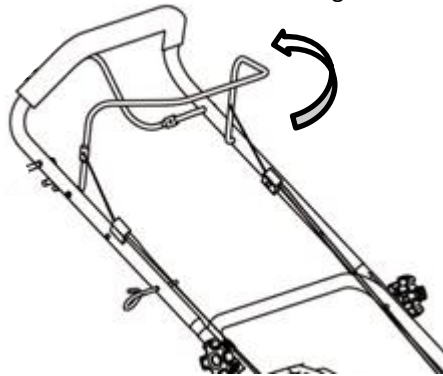
NOTE: Starting an engine without engine oil or fuel can seriously damage the machine.

STARTING THE ENGINE (COLD)

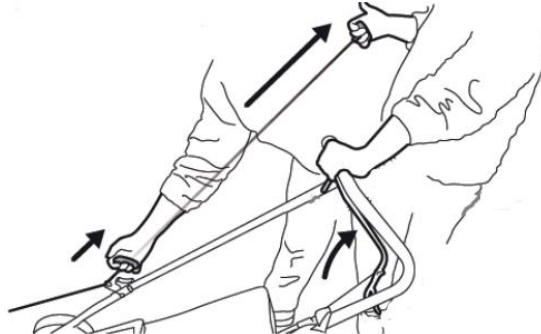
1. Push the red engine primer bulb on top of the air filter housing a maximum of three times.



2. Move throttle control lever to the fast (Rabbit) position.
3. Pull the OPC/Brake lever towards the main handle. Do not let go.



4. Grab the recoil starter handle and pull lightly until resistance is felt, then pull rapidly.



5. The engine should start.
6. Rehouse the recoil starter handle. Do not let it go until housed to prevent damage.
7. Adjust the throttle to required engine speed.
8. If the engine does not start, run through from step 2 again.



INSTRUCTION MANUAL

NOTE: If the engine won't start after you have operated the starter several times, the engine may be flooded with excess fuel. Use the following procedure to clear and start a flooded engine.

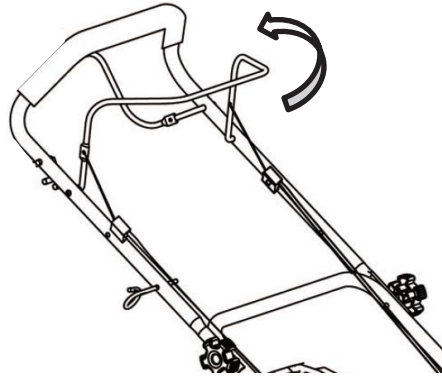
1. Release the OPC/Brake lever.
2. Remove the spark plug, dry it, and then reinstall it.

NOTE: Install the spark plug carefully by hand, to avoid cross-threading. After the plug is seated tighten 1/8 to 1/4 turn with socket spanner of spark plug to compress the washer.

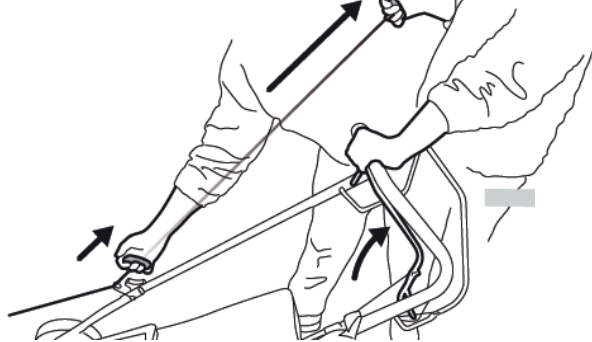
3. Pull the OPC/Brake lever towards the upper handle.
4. Operate the starter as described above.

STARTING THE ENGINE (WARM/HOT)

1. Pull the OPC/Brake lever towards the main handle. Do not let go.



2. Grab the recoil starter handle and pull lightly until resistance is felt, then pull rapidly.



3. The engine should start.
4. Rehouse the recoil starter handle. Do not let it go until housed to prevent damage.
5. If the engine does not start, run through from step 1 again, but press the primer bulb once only.

NOTE: if the engine won't start after you have operated the starter several times, the engine may be flooded with excess fuel. Use following procedure to clear and start a flooded engine.

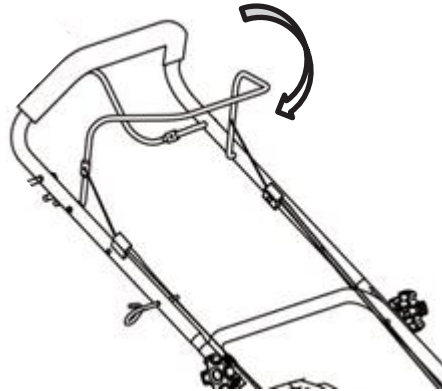
1. Release the OPC/Brake lever.
2. Remove the spark plug, dry it, and then reinstall it.

NOTE: Install the spark plug carefully by hand, to avoid cross-threading. After the plug is seated tighten 1/8 to 1/4 turn with socket spanner of spark plug to compress the washer.

3. Pull the OPC/Brake lever towards the upper handle.
4. Operate the starter as described above.

STOPPING THE ENGINE

- Release the OPC/Brake lever. The engine will come to a stop and a couple of seconds later, the blade will stop rotating.



MOWING WITH COLLECTOR



WARNING

Always observe the strictest safety procedures when using the lawnmower. Carefully read the safety instructions of this manual before using the lawnmower.
Never open the rear flap when the grass bag has been detached (to be emptied) and the engine is still running. The rotating blade can cause serious injuries!

1. Select your required height of cut setting.
2. Start the engine and allow it to run and warm up. See Starting the Engine section of the manual.
3. Keep a firm grip on the upper handle with OPC/Brake lever always engaged when attempting to cut.
4. Pull the Drive lever up to the handle when you wish to self-propel.

EMPTYING THE GRASS BAG

As soon as grass clippings start to trail the lawnmower, it is time to empty the grass bag.

NOTE: Before taking off the grass collector, switch off the engine and wait until the blade has come to a stop.

1. To take off the grass collector, use one hand to lift the rear cover and the other to grab onto the grass collector carry handle. The rear cover automatically falls after removing the grass collector and closes off the rear chute opening.
2. Empty the grass debris from the grass collector and refit.

NOTE: If any grass residue is caught in the discharge chute, clean it using a brush. Do not remove grass debris in the mower deck or on the blade by hand or with your feet. Instead use suitable tools such as a brush or broom. To ensure that the cut grass can be collected into the grass collector, the discharge opening and inside the mower deck must be cleared of any blockage.

MOWING WITH REAR DISCHARGE

To mow and not collect your cuttings, the machine is equipped to rear discharge.

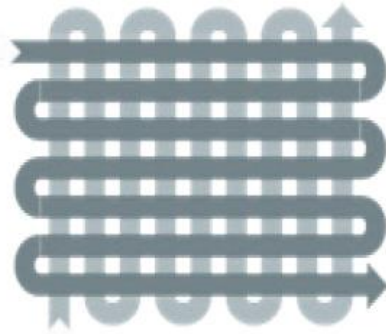
1. Lift the rear cover and remove the grass collector.
2. Allow the rear collector to sit on the rear of the deck.
3. Place the grass collector in a safe place.
4. Start the machine and mow. The grass will be discharged from the back of the mower to the floor.



INSTRUCTION MANUAL

MOWING INSTRUCTIONS

The lawn's appearance will improve if it is always cut at the same height and cut in alternate directions as shown below.



Under certain conditions, such as very tall grass, it may be necessary to raise the height of cut to reduce pushing effort, prevent overloading of the motor and leaving clumps of grass clippings. It may also be necessary to reduce ground speed and/or push the lawn mower over the area a second time. For extremely heavy cutting, reduce the width of cut by overlapping the previously cut path and mow slowly. For cutting convenience, it may be best to start mowing at a point close to the power supply and to work your way away from the supply.

1. Walk, never run with the mower, be very careful when mowing uneven or rough ground.
2. Be careful when changing the direction of the mower on a slope. Mow across the face of slopes, never down or up.
3. Do not mow excessively steep slopes.
4. Best results will be achieved if the grass is dry. Wet grass will clog the blade & grass collection system.
5. Grass grows at different rates at different times of the year. Never use the lowest cutting height for the first cut of the season or in drought conditions.
6. Do not remove grass debris in the mower deck or on the blade by hand or with your feet. Instead use suitable tools such as a brush or broom.
7. Check that all nuts, bolts and screws are well tightened.
8. Before mowing, place the grass collector in its position.
9. Before mowing make sure that the blade and the blade fixing screw are securely fastened. When blade cutting edges require re-sharpening, this must be done evenly on both sides, to prevent any imbalance. If you are unsure how to sharpen the blade, please visit your local Approved Service Dealer. If the blade is damaged, it must be replaced.
10. When mowing, always wear a long trousers and strong footwear.
11. Do not run the engine in an enclosed and/or poorly ventilated area, where gas of the engine contains carbon monoxide, which are dangerous for your health.
12. Work only when there is enough light.
13. Turn off the engine if you must leave the lawnmower unattended.
14. Never lift the rear of the mower while starting the engine and never place your hands and feet underneath the deck or into the rear discharge chute while the engine is running.
15. **Never change in any way the rated speed of the engine.**
16. On self-propelled mowers, disconnect the self-propelled system before starting the engine.
17. Never lift or carry the mower while the engine is running.
18. Stop the engine and remove the spark plug cover in these cases:
 - Before any operation under the deck or the rear discharge chute.
 - Before any maintenance, repairing or checking operations.
 - Before carrying, lifting or removing the mower.
 - If you leave the mower unattended or changing the cutting height.
 - To remove and emptying the grass catcher.

- After hitting a foreign object, stop the engine and check thoroughly the mower in order to see if it is damaged. Take the machine to a local Approved Service Dealer for inspection if necessary. Repairs of this nature are not covered under the Manufacturer's warranty.
- If the mower vibrates in an abnormal way, find the reasons why, and take your mower to a local Approved Service Dealer.



WARNING

After the engine has stopped, the blade will still rotate a couple of seconds.



CAUTION

Operating on gradients could cause the machine to tip over.

Allowing anyone to operate this machine without proper instruction may result in injury.

Wear sturdy, full coverage footwear. Operating this machine with bare feet, or with open toe shoes or sandals increases your risk of injury.

Do not use the machine at night or in poor light.

Be sure to transport the machine from one place to another with the engine off.

Be sure to wear heavy gloves when cleaning underside of the deck or handling the blade.

To prevent damage, check the machine for any signs of damage or other faults when operated.

MAINTENANCE, CLEANING & STORAGE



WARNING

Improper maintenance & storage of the machine may void your warranty. Keep the machine clean for better and safer performance.

Turn off the engine before performing any maintenance. If the engine must be run, make sure the area is well ventilated. The exhaust emits dangerous carbon monoxide gases.

MACHINE MAINTENANCE

Use only original equipment replacement parts. Other parts may not perform as well, may damage the unit and may result in injury. In addition, use of other parts may invalidate your warranty.

- Before each use, check all nuts & bolts to be sure they are sufficiently tightened.
- We recommend only manufacturer original parts are used when maintaining this machine. Failure to do so could invalidate your manufacturer's warranty.
- The engine must be switched off, with the spark plug cap removed, before the machine is unassembled, cleaned, serviced or maintained.

ENGINE MAINTENANCE

REFER TO SEPARATE LONCIN ENGINE MANUAL FOR ENGINE MAINTENANCE.

CLEANING



CAUTION

Do not use a water hose or pressure washer to clean the engine. Water can damage the engine or contaminate the fuel system.



INSTRUCTION MANUAL

- The underside of the cutting deck should be cleaned after each use to prevent a buildup of grass clippings, leaves and other dirt matter. If this debris builds, it will invite rust and corrosion and may prevent correct collection or discharge. The deck may be cleaned by tilting the machine backwards towards the handles and propped up with a lawnmower stand tool. Scrape clean the underside of the cutting deck with a suitable tool, after making sure the spark plug cap is disconnected and secured away from the spark plug.
- Clean the engine regularly with a cloth or brush. Keep the cooling system (blower housing area) clean to permit proper air circulation which is essential to engine performance and life. Be certain to remove all dust, dirt and combustible debris from exhaust area.

BLADE REMOVAL & SHARPENING

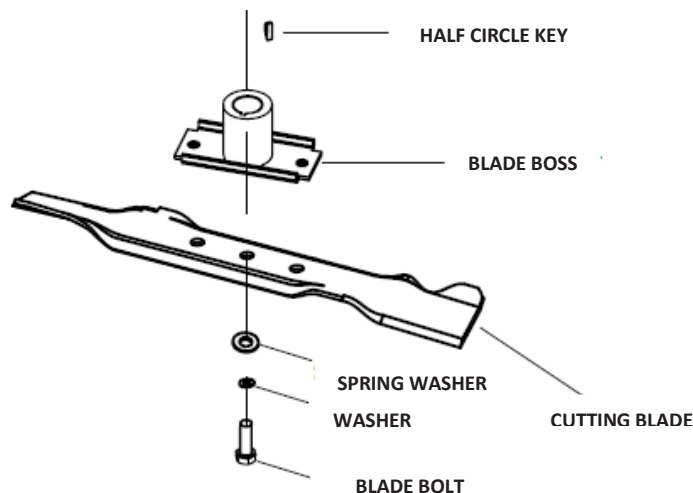
When removing the blade for sharpening or replacement, protect your hands with a pair of heavy-duty gloves.

- Remove the bolt and washer that hold the blade and blade boss to the engine crankshaft.
- Remove the blade and the blade boss from the crankshaft.



WARNING

Periodically inspect the blade boss for cracks, especially if you strike a foreign object. Replace when necessary. Not covered under the manufacturer's warranty.



- Before reinstalling the blade and blade boss to the machine, lubricate the engine crankshaft and the inner surface of the blade boss with light or engine oil.
- Be sure to install the blade with the part number marked on the blade facing to the ground when the mower is in the operating position.
- Slide the blade boss onto the engine crankshaft.
- Place the blade onto the blade boss. Be certain the blade is aligned and seated with its holes aligned to the pins from the blade boss.
- Place the blade washer onto the blade and secure with the blade bolt.
- The blade bolt should be tightened to torque 45-50Nm

Blade sharpening should only be undertaken by a garden machinery specialist. An unbalanced blade will cause excessive vibration when rotating at high speeds. It may cause damage to the mower and could break causing personal injury.

LUBRICATION

Lubricate the wheels at least once a season with light or engine oil. Also, if the wheels are removed for any reason, lubricate the surface of the axle bolt and the inner surface of the wheel.

STORAGE & TRANSPORT

STORING THE LAWNMOWER FOR SHORT PERIODS

The lawnmower can be stored for short periods of time (less than 15 days) without performing any storage maintenance. Before placing the lawnmower into storage always carry out the following:

1. Allow the engine to fully cool.
2. Ensure the grass collector is empty.
3. Clean all debris from under the mower deck.
4. Store the lawnmower on a flat and level surface with the mower upright.
5. Store in a safe place which is not accessible by children or people who are not familiar with operation.

STORING THE LAWNMOWER FOR EXTENDED PERIODS

If the lawnmower is to be placed into storage for more than 15 days, storage maintenance must be performed on the lawnmower. If the following steps are not carried out, when you next operate the lawnmower it may not start correctly and may need to be serviced.



CAUTION

Do not empty the petrol tank in enclosed areas, near fire or when smoking. Petrol fumes can cause explosions and fire

1. Empty the petrol tank with a petrol suction pump if available.
2. Alternatively, start the engine and let it run until any remaining petrol has been used up.
3. Change the oil at the end of every season. See removing oil within this manual.
4. Clean the cooling fins of the cylinder and the housing
5. Be sure to clean the entire machine to protect the paint.
6. Store the machine in a well-ventilated place.
7. Remove the spark plug. Use an oil can to fill approx. 20 ml oil into the combustion chamber. Operate the starter to evenly distribute the oil in the combustion chamber. Replace the spark plug.
8. Store in a dry, clean and frost-protected place, out of reach of unauthorised persons.



CAUTION

The engine must have completely cooled down before storing.

NOTE: When storing any type of power equipment in an unventilated or material storage shed,

- Care should be taken to rust-proof the equipment. Using a light oil or silicone, coat the equipment, especially cables and all moving parts.
- Be careful not to bend or kink cables.
- If the starter rope becomes disconnected from rope guide on handle, disconnect and ground the spark plug wire. Depress the blade control handle and pull the starter rope out from engine slowly. Slip the starter rope into the rope guide bolt on handle.

DO NOT STORE fuel for longer than 30 days. Fuel can become stale and cause damage to the engine carburetor, which is not covered by the machines manufacturer's warranty.

TRANSPORT

- Empty the petrol tank
- Always let the engine run until it has used up the remainder of petrol in the tank.
- Empty the engine oil from the warm engine.
- Remove the spark plug boot from the spark plug.
- Clean the cooling fins of the cylinder and the housing.
- Use the original packaging to ship whenever possible.



INSTRUCTION MANUAL

TROUBLE SHOOTING

PROBLEM	POSSIBLE CAUSE	SOLUTION
Engine fails to start.	<ol style="list-style-type: none"> 1. OPC/Brake lever not engaged 2. Spark plug cap not connected to spark plug. 3. Fuel tank empty 4. Fuel is over 30 days old and stale. 5. Block fuel pipe 6. Faulty spark plug 7. Engine flooded 	<ol style="list-style-type: none"> 1. Engage OPC/Brake lever 2. Connect spark plug cap to spark plug. 3. Fill with clean, fresh fuel 4. Carburettor gummed up, take to approved service dealer for non-warranty repair. 5. Clean fuel pipe & filter 6. Clean, adjust or replace spark plug. 7. Remove spark plug, dry off and reseal.
Engine runs erratic	<ol style="list-style-type: none"> 1. Spark plug cap loose. 2. Blocked fuel line 3. Stale fuel 4. Vent in Petrol cap blocked 5. Water or dirt in fuel system 6. Dirty air filter 7. Carburettor operating incorrectly. 	<ol style="list-style-type: none"> 1. Connect cap to spark plug and ensure tight. 2. Clean fuel pipe and filter 3. Remove fuel and use fresh fuel. 4. Clean vent 5. Drain fuel tank, refill with fresh fuel 6. Clean air filter 7. Have carburettor inspected by approved service dealer and adjusted.
Engine overheats	<ol style="list-style-type: none"> 1. Engine oil low 2. Air flow restricted 3. Carburettor operating incorrectly. 	<ol style="list-style-type: none"> 1. Fill engine with correct oil. Ensure dipstick is checked to ensure oil is within minimum & maximum levels. 2. Remove blower housing and clean. 3. Have carburettor inspected by approved service dealer and adjusted.
Engine hesitation at high speed	<ol style="list-style-type: none"> 1. Spark plug gap incorrect. 	<ol style="list-style-type: none"> 1. Adjust spark plug gap to between 0.6-0.8mm
Engine idles erratically	<ol style="list-style-type: none"> 1. Spark plug fouled, faulty or gap incorrect. 2. Carburettor not functioning correctly. 3. Dirty air filter. 	<ol style="list-style-type: none"> 1. Adjust spark plug gap to between 0.6-0.8mm 2. Have carburettor inspected by approved service dealer and adjusted. 3. Clean air filter.
Uneven cut	<ol style="list-style-type: none"> 1. Dull blade 	<ol style="list-style-type: none"> 1. Have blade sharpened or replaced.



REPLACEMENT PARTS

Please find on the following pages, parts lists and drawings for your machine. Should you require a replacement part, please call our Spares Team on 01793 333212, option 1 for assistance.

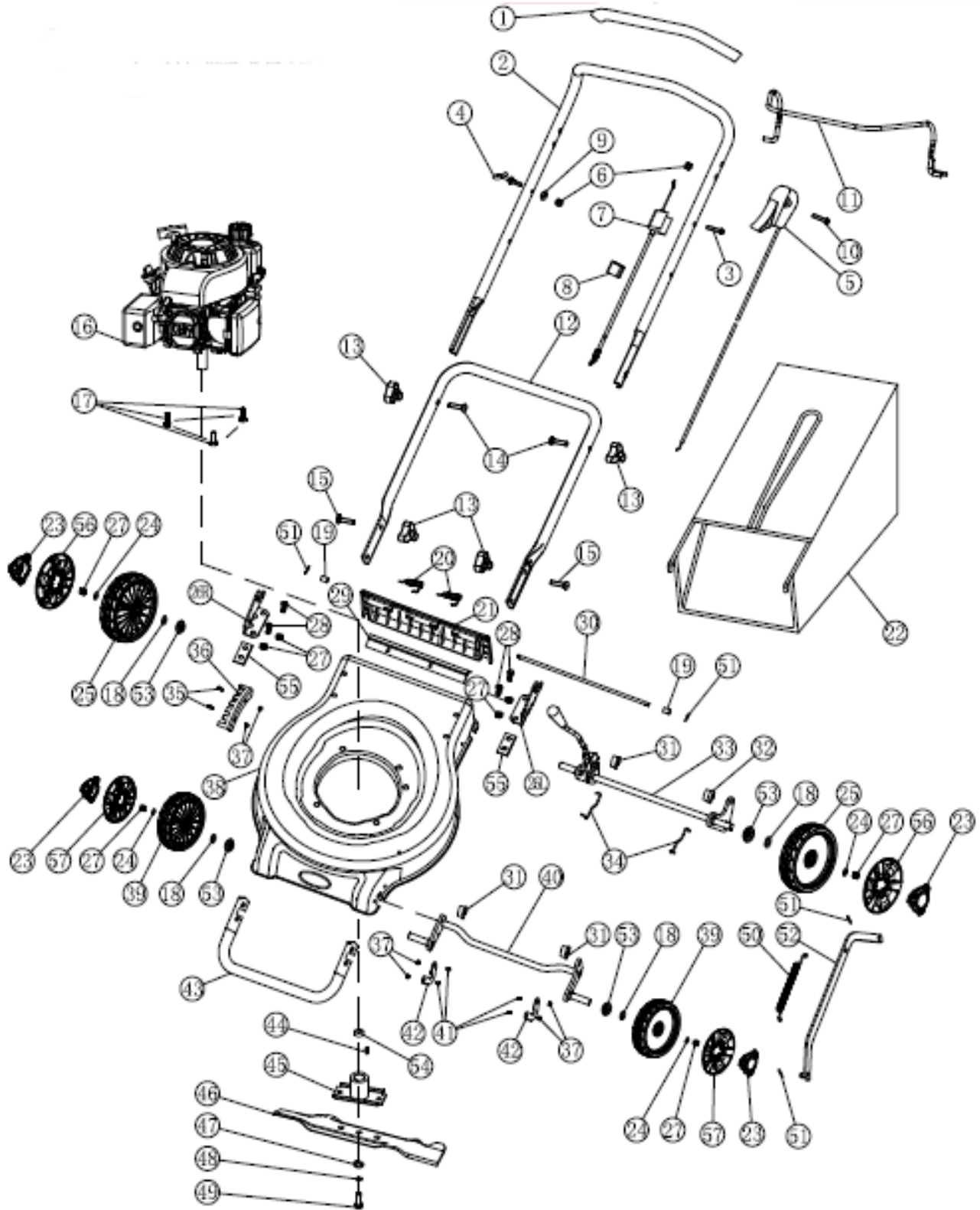
Webb recommends the use of Handy Parts oils, fuel additives, nylon lines pre-packed parts for all our machines.





INSTRUCTION MANUAL

PARTS DIAGRAM - WER40HPSFX (1938292001)



PARTS LIST - WER40HPSFX (1938292001)

Item No	Webb Part No	Webb Description	Qty	Item No	Webb Part No	Webb Description	Qty
1&2	QG117-13001C01S010	Upper Handle with Soft Grip	1	30	QG117-34021B01D010	Rear Grass Flap Axle	1
3	WE124-104040122	M6x45 Bolt	1	31	QG117-21051C030000	Thin Sleeve	3
4	WE195-13061C05D030	Recoil Guide	1	32	QG117-21041C030000	Thick Sleeve	1
5	WE197-14060C010010	Throttle Cable Assembly	1	33	QG117-22210B01S010	Rear Axle Assembly	1
6	M-M6SELFLOCKINGNUT	M6 Locknut	2	34	QG117-22061B01D010	W Spring	1
7	QG117-14050C030020	OPC/Brake Cable	1	35	WE119-25	Hex Flange Bolt M5x12	2
8	WE197-14081T010000	Cable Block	2	36	QG117-23041B01D010	Height Adjuster Grid	1
9	WE105-42	Washer 6	1	37	TH134-78	M5 Locknut	6
10	M-M6X25MM	M6x25 Bolt	1	38	WE197-10010B01S050	Cutting Deck	1
11	QG117-14010T01S010	OPC/Brake Lever	1	39L	QG117-20010T200000	Wheel 6in Assembly	2
12	QG117-13011B01S010	Lower Handle	1	40	QG117-21010B01S010	Front Axle Assembly	1
13	QG117-13020B01000A	Triangular Knob	4	41	M-M5x15MM	M5x15MM Bolt	4
14	QG117-13051T01D010	Square Neck Bolt-Long	2	42	QG117-21101C01D010	Front Wheel Mounting Plate	2
15	QG117-13051B01D010	Square Neck Bolt	2	43	QG117-11021B01S010	Front Bumper	1
16	N/A	Loncin 123cc (1P65FE-3) Engine	1	44	QG117-30051T01000A	Half-Circle Key	1
17	WE197-17	Engine Fixed Bolt	3	45	QG117-30010T02Y010	Blade Boss	1
18	WE197-18	Washer	4	46	QG117-31031B01S04A	Blade (400mm)	1
19	QG117-34031B010000	Transparent Pipe	2	47	WE197-31061B01Z010	Dish Washer	1
20	QG117-34041B01D010	Rear Grass Flap Spring	2	48	WE107-24	Washer 10	1
21	QG117-34011B010000	Rear Grass Flap	2	49	QG117-49	Blade Bolt	1
22	WE197-35010B01S010	Grass Collector Assembly	1	50	QG117-23021C04D010	Connecting Rod Spring	1
23	WE197-20021T200000	Wheel Cap	4	51	QG117-23031T01D01A	Connecting Rod Clip	4
24	TH113-40	Washer 8	4	52	QG117-23010B01S010	Connecting Rod	1
25L	QG117-20030T200000	Wheel 7in Assembly	2	53	QG119-21053T010000	Dust Cover	4
26L	QG117-13070B01S050	Left Bracket	1	54	QG117-30013B01D010	Bush	1
26R	QG117-13080B01S050	Right Bracket	1	55	QG117-10016B01D010	Plate	2
27	M-M8SELFLOCKINGNUT	M8 Locknut	8	56	WE197-20022T200000	Rear Wheel Trim 7in	2
28	M-M8X20MM	M8x20 Hex Bolt	4	57	WE197-20022T190000	Front Wheel Trim 6in	2
29	QG117-34061B010000	Rear Grass Flap Seal	1				



EC DECLARATION OF CONFORMITY

We Handy Distribution Ltd - SN3 5HY (Importer) declare that the product:

Designation: Petrol Hand Push 400mm Lawnmower

Model(s): WER40HPSFX

Product No.: 1938292001

Type/Serial No. As per rating label on machine

Cutting Diameter: 400mm

Engine Displacement: 123 cm³

Rated Engine Power: 2.1 kW

Rated Engine Speed: 2800 rpm

Complies with the following directives:

Machinery Directive 2006/42/EC

The conformity assessment procedure followed was in accordance with

EN ISO 5395-1:2013/A1:2018; EN ISO 5395-2:2013/A2:2017

Outdoor Noise Directive 2000/14/EC & 2005/88/EC

Guaranteed Sound Power Level L_{WA} : 93 dB(A)

Emission Sound Pressure Level L_{PA} : 71 dB(A) - uncertainty: 3.0 dB(A) According to 2000/14/EC

Vibration a_{hv} : 3.120 m/s² - uncertainty K: 1.5 m/s²

Notified Body:

TÜV SÜD Product Service GmbH

Addresses:

Certification Body, Ridlerstraße 65, 80339 München, Germany

Authorised signatory and technical file holder

Date: 05/01/2020

Signature:

A handwritten signature in black ink, appearing to read "S Belcher", written over a horizontal line.

Name: Mr Simon Belcher

Position: Chairman

Company: Handy Distribution Ltd

Address: Murdock Rd, Swindon, Wiltshire, SN3 5HY.





INSTRUCTION MANUAL

This Service Book is provided with your Webb, to help you look after your purchase to our recommendations and enable you to take advantage of the conditional manufacturer domestic warranty*.

Present this service book to your authorised Webb repair dealer, whenever a service or a warranty appraisal is required.

The booklet is applicable to the following products, in the UK only:

- Ride On Lawn Tractors
- Cylinder Lawnmowers
- Petrol Rotary Lawnmowers
- Petrol Hand Held Range

Please register your machine using the following pages or at www.webbgardenpower.co.uk. By registering your machine, you agree to maintain the machine in accordance with the service schedules specified in this manual and services duly recorded. (Not applicable for Webb electric handheld machines). You may be asked to produce this booklet as proof of servicing in the event of a claim. Proof of purchase should also be kept as a reference.

Ensure you have the following information available from your machine product label. The two examples below can be found on your machine:



1. Model Number

2. Serial & Product Number

1. Users Statement of Warranty

Each new machine is warranted against defective material or assembly of material under normal usage. The warranty applies to the original purchaser, is not transferable and covers faulty parts and the labour involved in replacing and repairing those parts, which are of original manufacture.

2. Period of Warranty - valid from 1 January 2020

Webb (excludes Dynamic, Legacy & Heritage), 2 year conditional warranty from the original date of sale to the first domestic user.

Webb (Dynamic, Legacy & Heritage) 1 year warranty from the original date of sale to the first domestic user.

90 days from the original date of sale to the professional/commercial or for hire user.

Engine warranty as per the engine manufacturer's warranty, which will be supplied with the machine.

90 days from the original date of sale for Replacement Spare Parts

All machines' must be serviced within the first 14 months from the original date of purchase, to qualify for a second year parts & labour warranty, details of the service must be recorded in the service record within this manual.

A reduced warranty period of 90 days applies to those items which are subject to normal wear and tear and in normal use, will need replacement or adjustment.

These items are chargeable after 90 days of ownership.

Filters
Tyres / Wheels
Drive chains and belts
Brake & clutch friction components
Control cable & starter cords
Fluids & lubricants
Spark plugs
Blades (Lawnmowers & Brushcutters)
Cutter bars (Hedgecutters)
Drive & clutch cable surfaces
Nylon Lines (Line Trimmers)
Carburettor cleaning
Bearings
Bushes
Electric cable
Grass collectors

3. Not covered by this warranty

(a) The warranty policy does not cover any depreciation or damages caused by ordinary wear, rusting or corrosion, lack of correct maintenance or operation, misuse, abuse, lack of transportation or accident.

(b) The warranty policy does not cover any costs necessary for the standard periodic maintenance services instructed by the operators manual, or service parts replacement which would include oil, filters, tyres, belts, brake linings, fuses, blades, seals and other service parts unless it can be proven that the item has evidence of faulty manufacture.

(c) The warranty policy will not cover failure or damage caused as a result of parts or accessories being modified without the written approval of GJ Handy & Co Ltd.

(d) The warranty policy will not cover the unit if non-genuine parts have been fitted and as a result damage has occurred to the unit.

(e) The warranty policy is non-transferable and is only applicable to the original purchaser.

4. Disclaimer

(a) This warranty is only a remedy for defect of products. GJ Handy & Co Ltd will never warranty in terms of the merchantability or the fitness for a particular purpose.

(b) No person is authorised to make any warranties, representations or promises, expressed or implied, on behalf of GJ Handy & Co Ltd, or to modify the terms conditions or limitation of this warranty policy in any way.



INSTRUCTION MANUAL

(c) Neither GJ Handy & Co Ltd nor any company affiliated with GJ Handy & Co Ltd shall be liable in any event or manner whatsoever for incidental or consequential damages or injuries, including, but not limited to, loss of crops, loss of profit, out of pocket expenses or profits, rental of substitute equipment or other commercial losses.

5. General

(a) Most warrantable failures show up within the first few weeks of use. These failures are usually straightforward and warranty assessment is relatively easy.

(b) Failures relating to cutter decks and belts need careful investigation, as the cause may not always be straightforward. Look for damage to blades and pulleys especially when the cutter belt or blade boss have snapped or cracked as this could be due to impact damage.

(c) Customers should always refer to the operator/instruction manual when any disputed problem arises, you will find most areas covered within the manual.

Protecting your machine

Maintenance

Regular maintenance of your Webb machine is essential to ensure it operates, safely, efficiently and therefore reducing the environmental impact.

It is the owner's responsibility to ensure that their Webb machine is maintained at specific intervals. Any approved Webb service dealer can undertake a service, which are specialised in our products and will be aware of your particular machine and any technical updates which will save valuable time & money.

If you are using your machine in dry, dusty or high temperatures, you will need to service the machine more regularly.

Fuel (if applicable)

Due to ongoing efforts by fuel companies to reduce emissions, unleaded petrol will oxidize & deteriorate in storage overtime, leaving residue from detergent components.

Fuel deterioration problems may occur when petrol is stored for over 30 days. If you are planning to store fuel for over 30 days, we recommend you add Handy Parts Sure-Start fuel stabilizer to fresh fuel after purchasing. Sure-Start cannot reconstitute stale fuel.

Storage

When storing your machine for an extended period, we do recommend that you follow the instructions of engine instruction manual.

Always store the fuel in a clean, approved and sealed container. If the container is steel, ensure it is not corroded. If the container is not filled to its recommended capacity, air can accelerate fuel deterioration.

Always store fuel away from direct sunlight, in a dark, cool environment.

Your servicing Webb approved dealer will stamp & date the below relevant sections, when the correct service actions have been completed.
PLEASE ENSURE THE SERVICE BOOK IS AVAILABLE FOR THE DEALER, DURING SERVICE WORK.

1st Service

This must be stamped by an approved service dealer to qualify for a free second year warranty.
(Excluding the Webb Electric Handheld machines)

12 Months

Date

24 Months

Date

36 Months

Date



INSTRUCTION MANUAL

48 Months

Date

60 Months

Date

72 Months

Date

84 Months

Date

96 Months

Date

108 Months

Date

120 Months

Date

132 Months

Date

Product Information (* Compulsory)

If you have registered online, this form is not necessary.
PLEASE POST THIS COPY TO THE ADDRESS OVERLEAF

*Model No:	
*Product No:	
*Serial No:	
*Date of Purchase:	

Personal Information (* Compulsory)

*Title		*Forename		*Surname	
*House Number		*House Name			
*Address 1					
*Address 2					
*Town					
*County					
*Postcode					
Home Tel			Mobile Tel		
Email					

Age	18 to 25		26 to 35		36 to 45		46 to 60		61 to 80		81 & over
*Usage	Domestic Use			Commercial/Professional/Hire Use							

*Dealer Stamp (if available)



*Selling Retailer (If dealer stamp not available)

*Dealer Name	
*Dealer Address	
*Date of Purchase	

Webb Lawnmowers privacy commitment to machine owners.

The information supplied, helps us to improve the products & services we provide, including information that we believe is relevant to your and/or your machine. We value your trust by giving us this information about yourself and we are committed to protecting your privacy.

Webb, its associated companies, authorised dealers or third parties working on our behalf may wish to contact you regarding **PRODUCT RECALLS** specific to your machine. Please advise how you wish to be contacted for this specific reason only:

Post Telephone Email

From time to time Webb, its associated companies, authorised dealers or third parties working on our behalf may wish to contact you regarding our products, services, offers or just opinions, which may be used for marketing, research or analysis purposes.

If you wish to be contacted by any of the following methods, please tick the relevant boxes:

Post Telephone Email

You may give Webb Lawnmowers notice in writing at any time that you no longer wish to receive direct marketing communications

Webb Lawnmowers
Murdock Road
Dorcan
Swindon
Wiltshire
SN3 5HY