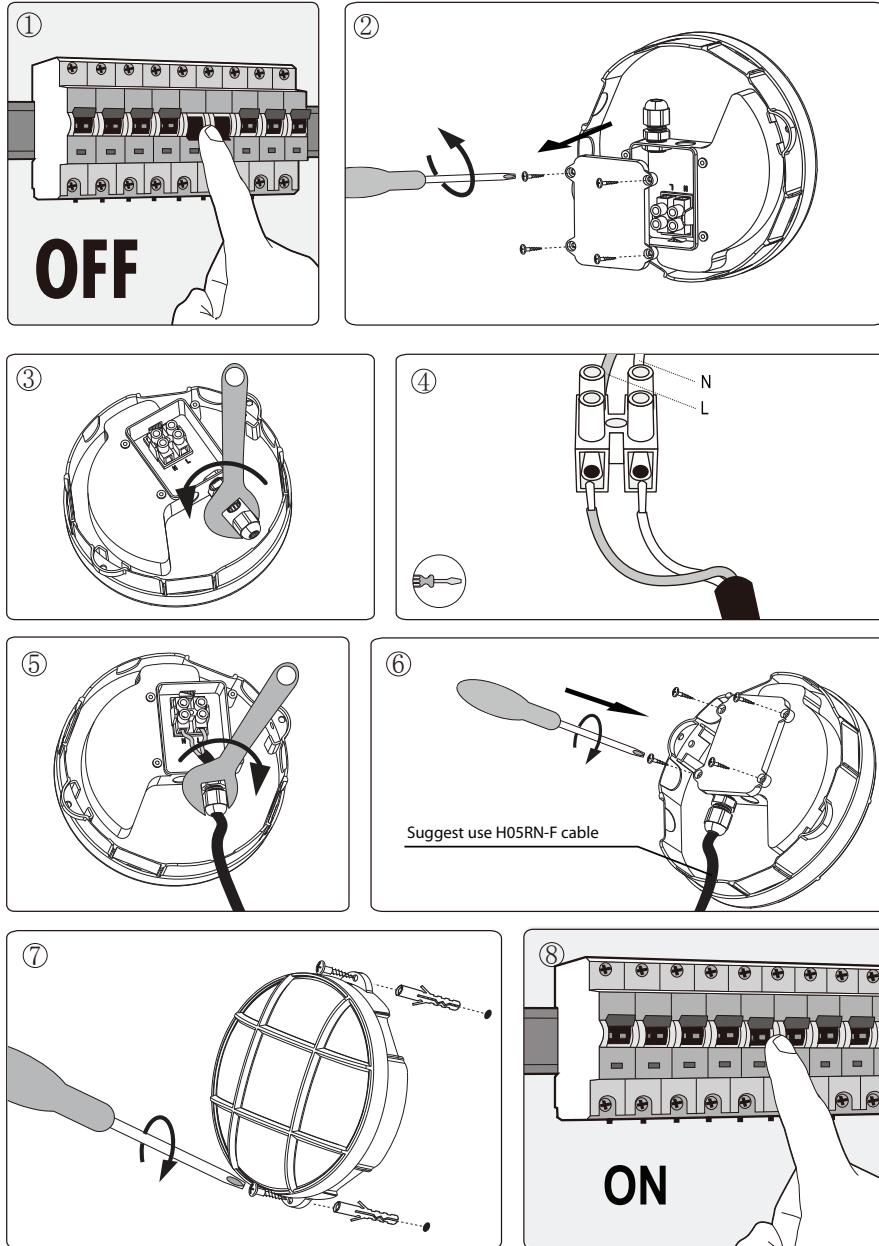


Assembling the bulkhead light



Item 34024 = 8W version Item 34025 = 15W version.



INS CZ 34024 34025 - B

Capella Round Led Bulkhead User Instructions

Thank you for selecting this product. It has been thoughtfully designed and carefully manufactured to ensure a high level of reliability and performance.

We strongly recommend that ceiling/wall fittings are installed by a qualified electrician. If, however, you decide to carry out your own installation, please read through these instructions carefully before commencing work, and retain them for future reference.

Please note, the important safeguards and instructions appearing in this leaflet are not meant to cover all possible conditions and situations that may occur. It must be understood that common sense, caution and care are factors which cannot be built into any product and must be supplied by the person installing and caring for the fitting.

Changes to Building Regulations

As of 1 January 2005, changes to the Building Regulations affect domestic electrical installations in England and Wales. You don't need to be a qualified electrician to make changes to your home's electrical system, but the work must be done in accordance with the standards in the Regulations.

You do not need to notify your Local Authority if you do **minor** electrical work such as:-

- replacing or repairing a socket, light or cable in any room
- adding extra spurs, sockets or lights to an existing circuit (except in a kitchen, bathroom or outdoors)

However, the work must be done to the standards in the Wiring Regulations and you should consider having the work checked by a competent electrician to make sure it is safe.

Before you start **other** electrical work such as:-

- adding new circuits to your existing installation
- any work (other than repairs / replacements) in a room where there is water (eg. kitchen, bathroom, etc.)
- any work (other than repairs / replacements) outdoors (eg. installing garden lighting or sockets, etc.)

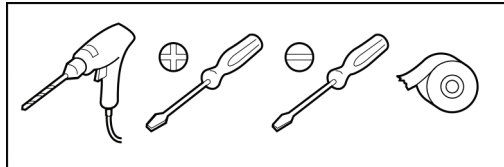
You must **notify** your Local Authority Building Control Department, which has responsibility for ensuring the work is inspected and tested.

Where you have any work done by an electrician who is a member of a competent person self-certification scheme, the electrician will be able to certify the work complies with the Regulations and you do not need to notify your Local Authority.

We recommend that you make yourself aware of the Regulations before you undertake any work and if you require any clarification you should contact your Local Authority Building Control Department.


Tools which may be required:

- Drill
- Cross Head Screwdriver
- Small Electrical Slotted Screwdriver
- Insulation Tape



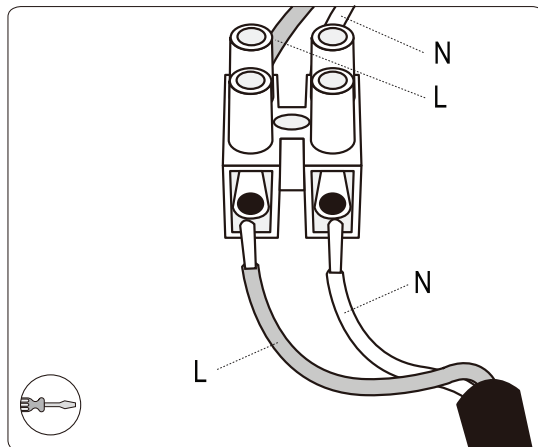
Assembling the bulkhead light

Follow the guide on the last page to assemble the bulkhead light.

Double insulated items (Class 2): Are marked with the symbol  This fitting must not be Earthed.

Do not wire this lantern into the lighting circuit - use a switched fuse spur.
Do not attach any part of it to an Earth Wire or terminal.

This bulkhead is rated IP65 - Totally protected against dust. Protected against low pressure jets of water from all directions. Limited ingress permitted.



Please note: For new installations, check for any electrical cables or pipe work (gas/water) in the vicinity of the intended mounting point for this product, before proceeding with the installation.

LED Fitting

Please note: the LED bulbs used in this fitting cannot be replaced.

Switch on!

You may now switch the electricity back on at the mains.

Cleaning care

The Plastic finish should be cleaned with a soft, dry cloth only. Do not use polishes or abrasive cloths.

Do not immerse in water or cleaning solutions.

Safety information

For your safety, please remember the following:
Always switch off the supply before removing shades/covers or cleaning.

IP65 product: Totally protected against dust. Protected against low pressure jets of water from all directions. Limited ingress permitted.



This product should be disposed of responsibly at the end of its life. Please recycle where facilities exist. Check with your Local Authority or retailer for recycling advice (Waste Electrical and Electronic Equipment Directive)

Helpline

If you receive this item with parts broken or missing, please telephone:

0333-005-0077

Please have ready your name, address, tel. no., product reference, where purchased and parts required. An answering service is in operation outside office hours and during busy periods.

We regret that we are unable to give advice on internal house wiring.

Cascade Holdings Ltd, Gorse Mill, Gorse Street, Chadderton, Oldham. OL9 9RJ