

Options

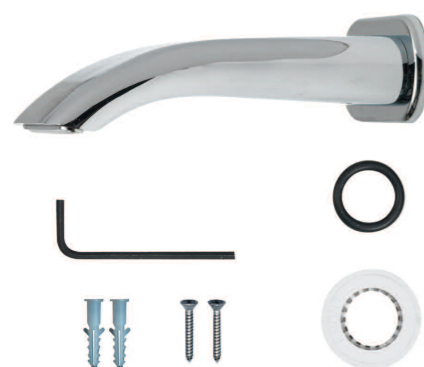
Bath outlets range

Deck spout & wall spout

Components - Deck spout



Components - Wall spout



Components - Bath overflow filler



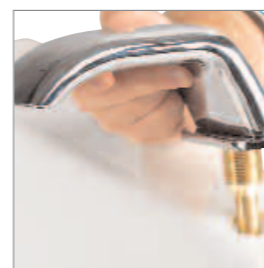
Deck mounted spout

1 Drill a minimum Ø29mm diameter hole in the bath rim in the required location ensuring there is adequate space for the mounting plate to sit flush on the rim of the bath.

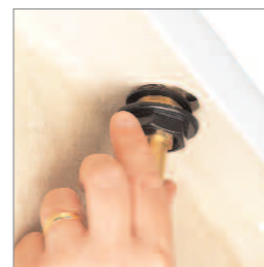
2 Apply a thin bead of mastic to the rear of the mounting plate and place into position in the desired location on the bath rim.

! The bath spout must be sited in an easily accessible location for servicing and maintenance.

This outlet is not suitable for fitting above the overflow on baths conforming to BSEN232.



3 Place the rubber washer and back nut onto the deck spout tail and secure to the underside of the mounting surface.



4 Attach the 15mm push fit flexible hose to the deck spout tail and connect to the blended supply pipe.



Wall mounted spout

1 Place the mounting plate in the desired location onto the mounting surface. Ensuring the concealed blended pipe work is not pierced, mark and prepare the fixing points and blended pipe work position.

! Current Water Supply Regulations state there must be a minimum 25mm gap between the rim of the bath and the lowest point of the bath outlet spout.

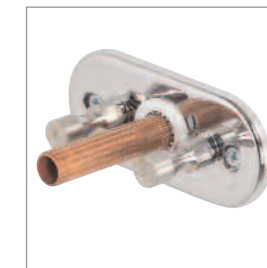


2 Prepare pipe work from the processor to the required position for the wall spout outlet using Ø15mm pipe. Trim the pipe to a length of 50-60mm measured from the wall surface using a rotary type cutter. If a hacksaw is used the pipe end must be carefully de-burred and chamfered.

3 Apply a thin bead of mastic to the mastic groove at the rear of the mounting plate. Carefully slide the plate over the pipe and secure to the wall using the screws provided, if suitable.



4 Slide the 15mm grip ring over the protruding pipe and push into the recess within the mounting plate.



5 Slide the brass O'ring spacer over the pipe flush with the grip ring. Slide the O'ring over the pipe flush with the O'ring spacer. Lubricate the O'ring using a suitable silicone based lubricant.



6 Place the spout onto the mounting plate flush with the wall surface, ensuring the O'ring slides correctly into position within the spout body.



7 Secure the spout to the mounting plate using the grub screws and hexagonal key provided.



Options

Bath outlets range

Bath overflow filler

Aqualisa Products Limited, The Flyer's Way, Westerham, Kent TN16 1DE

Customer Helpline: 01959 560010 Facsimile: 01959 560030

Website: www.aqualisa.co.uk E-mail: enquiries@aqualisa.co.uk

Important information

! This product must be installed by a competent person in accordance with the relevant current Water Supply Regulations.

The Aqualisa Options range of accessories are supplied complete with a 2 year guarantee.

In the event of any product problems, please contact the Aqualisa Customer Helpline on 01959 560010.

Bath overflow filler

! The bath overflow filler is suitable for baths up to a maximum thickness of 24mm.

1 Carefully unscrew and remove the overflow filler outlet from the body assembly and set aside.



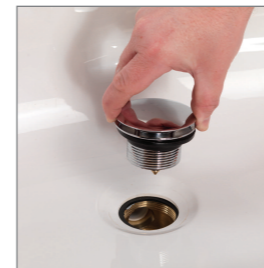
2 Carefully unscrew and remove the bath waste clicker assembly from the waste body and set aside.



3 Offer the bath waste into position ensuring the rubber washer is correctly aligned between the waste assembly and the bath base.



4 Ensuring the rubber washer is correctly aligned, pass the bath waste clicker through the bath and secure to the waste body assembly.



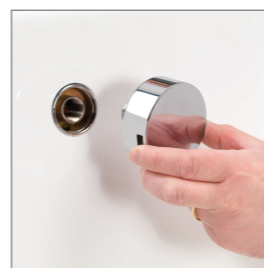
! The brass clicker mechanism must not be used as leverage to tighten to the waste body assembly.

5 Connect the bath waste to a suitable waste pipe.

6 Offer the outlet body assembly into position at the rear of the bath ensuring the rubber washer is correctly aligned between the outlet body assembly and bath wall.



7 Ensuring the rubber washer is correctly aligned, pass the overflow filler outlet through the bath and secure to the body assembly.



! To ensure the spout is correctly positioned at the bottom of the chrome outlet assembly (located on the inside of the bath), it may be necessary to first remove the waste pipe from the outlet body assembly (sited on the back of the bath). Place the chrome outlet in the correct position inside the bath and secure the body (on the back of the bath) to the chrome outlet, through the bath wall. Reconnect the waste pipe to the body assembly.

8 Remove the relevant inlet blanking plug and carefully attach the flexible hose to the blended inlet connection, ensuring the 'O' ring is not damaged.



9 Connect the flexible hose to the blended supply pipe ensuring a suitable non restrictive double check valve is fitted in line with current Water Supply Regulations (not supplied).

Waste pipe extension kit

! If required, for larger baths, a 900mm waste pipe conversion kit, part number 477502 is available from Aqualisa Customer Service department. Please contact Customer Services on 01959 560010.

1 Unscrew the clamping nut and remove the waste pipe from the waste assembly.



2 Remove the clamping nut and sealing washer from the waste pipe and set aside.

3 Carefully pull the waste pipe away from the outlet assembly.



4 Reassemble the unit using the longer waste pipe by reversing the above procedure.