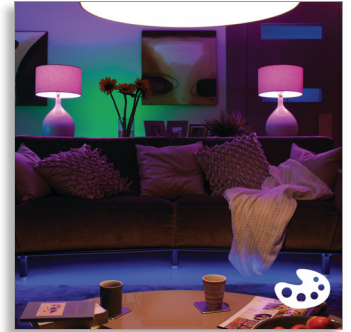


Philips Hue White and
color ambiance
starter kit B22

3 x B22 bulb

Bridge included
Dimmer switch included
White and colored light



8718696728888



Limitless possibilities

for extraordinary experiences

The Philips Hue white and color ambiance contains 3 bulbs, a bridge and a switch. It can transform your lighting into an extraordinary experience with colored and white light.

Sync lights to your music, TV and games for immersive effects.

Limitless possibilities

- Be creative with 16 million colors
- Sync lights with music and movies
- Light up your gaming

Light for your moments

- Wake up and go to sleep naturally
- Create your ambiance with warm white to cool daylight
- Relax, read, concentrate and energize with light recipes

Easy control and comfort

- Smart control, home and away
- Set timers for your convenience
- Installation free dimming
- Control it your way
- Control via the included Philips Hue wireless dimmer switch

PHILIPS

starter kit B22

3 x B22 bulb Bridge included, Dimmer switch included, White and colored light

8718696728888

Highlights

Be creative with colors



Play with light and choose from 16 million colors to instantly change the look and atmosphere of your room. Set the scene effortlessly with one touch of a button. Use a favourite photo and relive that special moment with splashes of light. Save your favourite light settings and recall them whenever you want with the tap of a finger

Sync with music and movies



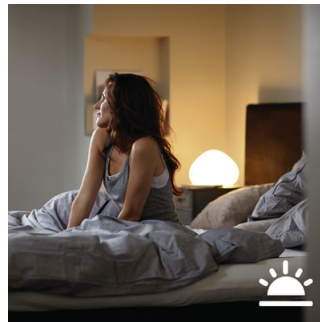
Extend your TV viewing experience to the whole room or sync light to your favorite music and see how light reacts to the rhythm. Download the third party apps and discover the amazing things you can do with Philips Hue.

Light up your gaming



Lift your gaming experience to the next level. Download the third party apps and discover the amazing things you can do with Philips Hue.

Wake up and go to sleep



Philips Hue will help get you out of bed the way you like it, helping you start your day feeling refreshed. The light brightness increases gradually mimicking the effect of sunrise and helps you wake up naturally, instead of being woken up by the loud sound of an alarm clock. Start your day, the right way. In the evening, the relaxing warm white light helps you to unwind, relax and prepare your body for a good night's sleep.

Create your ambiance



Set the right ambiance for any moment and decorate your home with warm to cool white light. Enjoy different styles throughout the year, no matter if it's the crisp white light reminding you of a spring breeze, the warm white light of a summer sun, or the ice cool daylight of winter.

Light for your daily routines



Light influences our mood and behavior. Philips Hue can help you to customize your daily routines into moments you can enjoy. Skip your morning coffee and get ready for the day with cool, bright white daylight that helps to energize your body and mind. Stay focussed with finely tuned bright white light. Or put your feet up and relax with a soft glow of white light for the perfect end of the day.

starter kit B22

3 x B22 bulb Bridge included, Dimmer switch included, White and colored light

8718696728888

Specifications

The bulb

- Fitting: B22
- Wattage equivalent: 60 W
- Power factor: >0.5
- Number of switching cycles: 50000
- Energy efficiency label: A+
- Rated lifetime: 25000 hour(s)
- Form factor: A60
- Lifetime: 25000 hour(s)
- Color temperature: 2000K-6500K +16 million colors
- Wattage: 10 W
- Input voltage: 220V-240V
- Lumen output: 806 lm @ 4000K
- Software upgradable
- Start up: Instant 100% light output
- Height: 110 mm
- Max. standby power: 0,2 W
- Diameter: 62 mm
- Light output: Dimmable via smart device only, >80 CRI @ 4000K

The bridge

- Height: 26 mm
- Frequency band: 2400-2483,5 MHz
- Max. number of accessories: 12
- Max. number of bulbs: 50
- Power adapter: 100-240 V AC / 50-60Hz

The switch

- Batteries included: 1 x CR2450

- Frequency band: 2400-2483,5 MHz
- Lifetime: 50.000 clicks
- Max. lights per switch: 10 if not linked to Hue bridge
- Minimal battery lifetime: min 3 year(s)
- Software upgradeable: when connected to Hue bridge
- Switch depth: 11 mm
- Switch height: 92 mm
- Switch width: 35 mm
- Wall plate depth: 14 mm
- Wall plate height: 115 mm
- Wall plate width: 70 mm
- Zigbee Light link: protocol IEEE 802.15.4

What's in the box

- Bridge: 1
- Ethernet network cable: 1
- Power adapter: 1
- Hue bulbs: 3
- Hue dimmer switch: 1

Environmental

- Operational humidity: 5% < H < 95% (non condensing)
- Operational temperature: -10°C – 45°C

Guarantee

- 2 years



Issue date 2018-07-03

Version: 2.0.1

12 NC: 9290 012 57461
EAN: 87 18696 72888 8

© 2018 Philips Lighting Holding B.V.
All Rights reserved.

Specifications are subject to change without notice.
Trademarks are the property of Philips Lighting Holding B.V. or their respective owners.

www.philips.com