



# INSTRUCTION MANUAL

# MULTI-PURPOSE CART

Model No: THMPC -- Product No: 193896002

ASSEMBLY REQUIRED

SAVE THESE INSTRUCTIONS

SPARES & SUPPORT: 01793 333212

Please read & understand this manual, paying particular attention to the safety instructions, before use.

The manufacturer reserves the right to change the product specification and livery according to continued product improvements.



# **CONTENTS**

**SPECIFICATIONS**  
**IMPORTANT INFORMATION**  
**GENERAL SAFETY INSTRUCTIONS**  
**CONTENTS & PARTS LIST**  
**ASSEMBLY**  
**OPERATION**  
**STORAGE**  
**REPAIRS & SERVICING**  
**MAINTENANCE & CLEANING**  
**NOTES**  
**WARRANTY**

## **Assembly Is Required**

This product requires assembly before use. See the “Assembly” section for instructions. Please check that all parts required for the assembly of this spreader are included. If for any reason you believe a part for the assembly is missing or damaged, please contact us.

**If you require any assistance with regards to the contents or operation of your machine, please contact us:**

**TEL: 01793 333212**  
**(MON – FRI 8.00AM TO 5.30PM EXCL. BANK HOLIDAYS)**

**EMAIL: [customerservice@handydistribution.co.uk](mailto:customerservice@handydistribution.co.uk)**

## SPECIFICATIONS

The manufacturer reserves the right to change the product specification and livery according to continued product improvements.

<b>Model Number</b>	<b>THMPC</b>
<b>Product Number</b>	<b>193896002</b>
Overall Dimensions (excl. draw bar handle)	(L) 1120 x (W) 610 x (H) 630
Dimensions Cart Cage Only (mm)	(L) 1110 x (W) 620 x (H) 270
Dimensions Tub Only (mm)	(L) 1120 x (W) 610 x (H) 270
Max Load Capacity (kg)	300
Max Tipping Capacity (kg)	200
Wheel Diameter (mm)	107.5
Tyre	Puncture Proof
Tyre Size	13 x 5.00-6
Weight (kg)	G.W 33.7 - N.W 36.5

## IMPORTANT INFORMATION

### INTENDED USE

The product is intended for transporting material for household & garden. This product is not intended for commercial use. Generally acknowledged accident prevention regulations and enclosed safety instructions must be observed.

Only perform work described in these instructions for use, any other use is incorrect. The manufacturer will not assume responsibility for damage resulting from such use.

## GENERAL SAFETY INSTRUCTIONS

**Read and understand the owner's manual and labels affixed to the product. Learn its application and limitations as well as the specific potential hazards. Retain these instructions for future reference. The operator is responsible for following the warnings & instructions in this manual and on the product.**

### STAY ALERT

Do not operate the machine while under the influence of drugs, alcohol, or any medication that could affect your ability to use it properly. Do not use this machine when you are tired or distracted from the job at hand. Be aware of what you are doing at all times. Use common sense.

### AVOID DANGEROUS CONDITIONS

Make sure there is adequate surrounding workspace. Cluttered areas invite injuries.

Keep your work area clean with sufficient light. Keep the area around the machine clear of obstructions, grease, oil, rubbish and other debris which could cause persons to fall onto moving parts.

### INSPECT YOUR MACHINE

Check all bolts, nuts & screws for tightness before each use, especially those securing guards & drive mechanisms. Vibration during use, may cause these to loosen.

Replace damaged, missing or failed parts before using.

Warning labels carry important information. Replace any missing or damaged warning labels.

### **CRUSH AND CUT HAZARDS**

Always keep your hands and feet clear from moving parts while operating the equipment. Always keep the work area clean and clear when operating.

### **DRESS PROPERLY**

Do not wear loose clothing, gloves, scarfs, neckties or jewelry (rings, wrist watches), which can be caught in moving parts.

### **DO NOT OVERREACH**

Keep proper footing and balance at all times when using the machine. Never stand on the machine. Serious injury could occur if the machine is tipped or if the moving parts are unintentionally contacted. Do not store anything above or near the machine, where anyone might stand on the machine to reach them.

### **AVOID INJURY FROM UNEXPECTED ACCIDENT**

Keep hands & feet out of the way of all moving parts. Do not place any part of your body or any tool e.g. in moving parts of the machine during operation.

### **DO NOT FORCE TOOL**

Always work within the rated capacity. Do not use the machine for a purpose for which it was not intended.

### **MAINTAIN YOUR MACHINE WITH CARE**

Clean the machine immediately after use. Keep the machine clean to ensure it operates to its full & safest performance. When maintaining this machine, only the manufacturer's original replacement parts should be used. The use of non-original manufacturer parts may invalidate your warranty.

### **PROTECT THE ENVIRONMENT**

Take left over materials to an authorised collection point or follow the stipulations in the country where the machine is used. Do not discharge into drains, soil or water.

### **STORE IDLE EQUIPMENT**

When not in use, the machine should be stored in a dry location. Keep the machine away from children and others not qualified to use it.

## **SAFETY SYMBOLS**



Safety alert symbol. Used to alert you to potential personal injury hazards. Obey all safety messages that follow this symbol to avoid possible injury.



### **DANGER**

Indicates an imminently hazardous situation which, if not avoided, will result in serious injury.



### **WARNING**

Indicates a potentially hazardous situation which, if not avoided, could result in serious injury



### **CAUTION**








Indicates a potentially hazardous situation which, if not avoided, may result in minor or moderate injury.

### **CAUTION**

Used without the safety alert symbol indicates a potentially hazardous situation which, if not avoided, may result in property damage.

# CONTENTS & PARTS LIST

ITEM NO.	PICTURE	DESCRIPTION	QTY
1		<p>GUN METAL STEEL TRAY</p> <p>TH227-1</p>	1
2		<p>GREY TUB</p> <p>TH227-2</p>	1
3		<p>BED FRAME</p> <p>TH227-3</p>	1
4		<p>FRAME BRACE</p> <p>TH227-4</p>	2
5		<p>PUNCTURE PROOF TYRE &amp; WHEEL ASSEMBLY</p> <p>TH227-5</p>	4
6		<p>HANDLE</p> <p>TH227-6</p>	1

7		<p><b>AXLE</b></p> <p><b>TH198-7</b></p>	1
8, 9		<p><b>Lock Nuts</b> <b>TH198-8</b></p> <p><b>Flat Washers</b> <b>TH198-9</b></p> <p><b>(used to connect steel tray and bed frame)</b></p>	4
10, 11		<p><b>Flat Washer</b> <b>TH198-10</b></p> <p><b>Split Pin</b> <b>TH198-11</b></p> <p><b>(used to assemble wheels)</b></p>	4
12		<p><b>R Clip</b></p> <p><b>TH198-12</b></p> <p><b>(used to assemble the handle and yoke)</b></p>	1
13		<p><b>Washer</b></p> <p><b>TH198-13</b></p> <p><b>(used to assemble the handle and yoke)</b></p>	1
14		<p><b>Yoke</b></p> <p><b>TH198-14</b></p>	1
15		<p><b>Bolt</b></p> <p><b>TH198-15</b></p> <p><b>(used to assemble the handle and yoke)</b></p>	1

**NOTE:** Parts Lists are supplied for information purposes only, not all parts are stocked individually & we recommend you contact our Spares Team on 01793 333212 for expert advice.

# ASSEMBLY

## STEP 1 – BED FRAME & TRAY ASSEMBLY

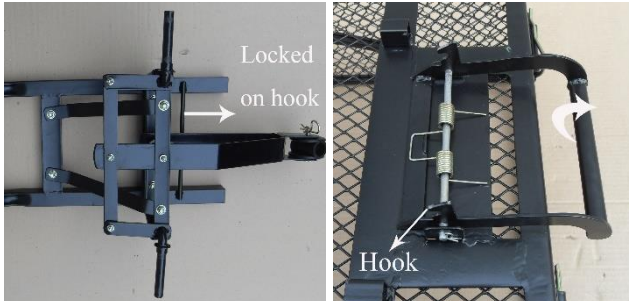
Turn steel tray (1) upside down. The dump handle is pre-assembled on the steel tray.



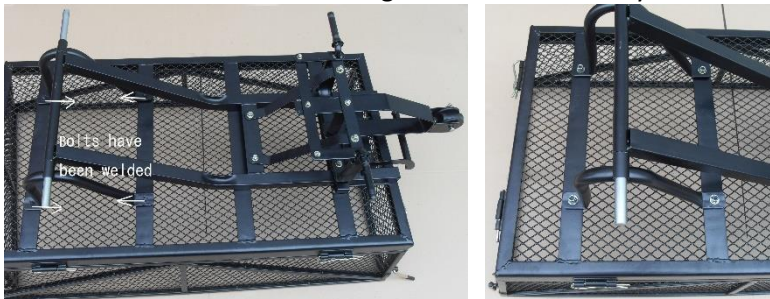
Thread the axle (7) through the bed frame braces (4) and preassembled bed frames (3) as pictured.



Put pre-assembled bed frame (3) onto steel tray (1), and then unlock the dump handle by pulling in an upward direction so that the marked part of the bed frame is locked onto the HOOK of the dump handle.



Attach the pre-assembled bed frame (3) to the steel tray (1) using lock bolts and flat washers (8). Four bolts have been welded onto the steel tray. Please align the longer side of the bed frame braces towards the front of the cart. Tighten all nuts securely.



## STEP 2 – WHEEL ASSEMBLY

Place the wheels (5) onto the axle and bed frame, then place flat washers onto the axle, and lock using Split pins (9). You will need to use pliers to separate the split pins.



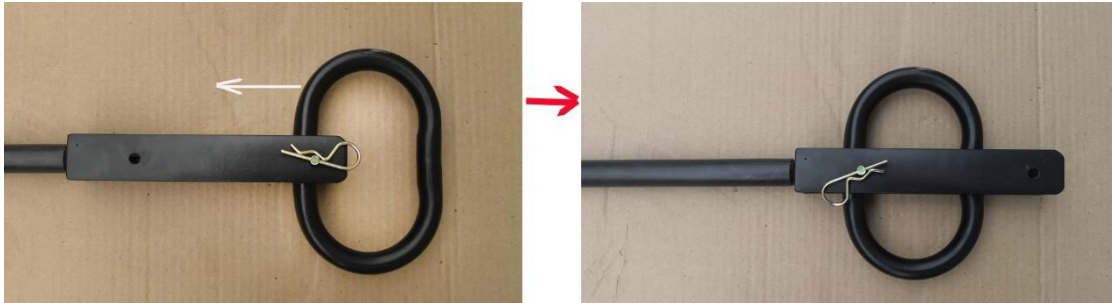
### STEP 3 – HANDLE ASSEMBLY

Turn over the assembled cart; put the handle (6) into the yoke. Place the handle bolt (15) through the frame (3), handle (6) and yoke (14), and then secure with the R-Clip (12).



#### USING THE CONVERTIBLE HANDLE:

1. Remove the clips and cotter pins.
2. Push the handlebar in a vertical direction and insert the clip. Secure by attaching a cotter pin.
3. The second cotter pin is used to attach the handle to the trailer hitch.



#### USING THE HANDLE AS A TRAILER HITCH:



### STEP 4 – TUB

Put the plastic tub (2) into the steel tray (1) and lock using a cotter pins.

### COMPLETED MULTI-PURPOSE CART



## OPERATION



**DANGER**

The product must only be put into operation if no defects are found. It is crucial that a defective parts are replaced before the product is used again.

Check the safety equipment and the safe condition of the product:

- Check all parts to make sure that they fit tightly.
- Check whether there are any visible defects: broken parts, cracks, etc.



**DANGER**

**DO NOT EXCEED THE EQUIPMENT MAXIMUM LOAD CAPACITY OF 300KG**

- This is a garden/domestic multi-purpose cart, therefore extended use over abrasive surfaces (e.g. concrete, tarmac etc.) could cause premature wear on the tyres.
- Always ensure that your load is evenly distributed over the front and rear axles & four wheels (Max weight per tyre 150kg).
- Do not at any time allow anyone to sit or stand on the Cart.
- Do not allow children to play on, stand upon or climb in the Cart.
- Always inspect the Cart before use to ensure it is in good working condition.
- Immediately replace or repair damaged or worn parts before using the Cart.
- Always check and tighten hardware and assembled parts before operation.
- Do not try to carry loads that make the Cart unstable.
- Avoid large holes and ditches when using the Cart.
- Be careful when operating on steep gradients (hills) the Cart may tip over.
- Only tow with recommended vehicles (Lawn/Garden Tractors and ATVs).
- Always operate at a reduced speed in rough terrain, along creeks, ditches and on hillsides.
- Do not operate close to creeks, ditches and public roads.
- To avoid personal injury and/or equipment damage **DO NOT EXCEED 10 MPH.**
- Always use caution when loading and unloading the Cart.
- Always secure and lock the Cart to the vehicle hitch before operating.

## USING THE TIPPING FEATURE



**DANGER**

**DO NOT EXCEED THE EQUIPMENT MAXIMUM TIPPING CAPACITY OF 200KG**

To operate the tipping feature on this Cart, pull the tipping handle located at the front of the cart, outward to release the locking mechanism. Lift up the handle to tip the cart into the dumping position.

Return the Tub & Bed to its lowered position. Make sure the tipping handle is locked into place, when the tub and Bed are at their lowest position and secured.

## STORAGE

Never allow carried material to remain in the Trolley for extended periods of time. For years of trouble free service, make sure the Trolley is clean and dry before storing. Store in a dry protected area away from sunlight, during severe weather and winter months. If storing for an extended period, grease the axles and wheel bearings on the Trolley.

## REPAIRS & SERVICING

Users of this product should only undertake actions described in this manual, unless otherwise instructed by the manufacturer. All other repairs and servicing should only be undertaken by an approved service/repair dealer. Your nearest approved service/repair dealer can be found at [www.thehandy.co.uk](http://www.thehandy.co.uk).

When repairing the product, always use approved replacement Handy Parts or those which are technically identical. Using high quality replacement parts avoid the risk of accidents, damage to the product and invalidating the manufacturer's warranty.

## MAINTENANCE & CLEANING



### DANGER

**Before all cleaning and maintenance work, switch the device off and disconnect the mains plug from the electrical source. Wait until all moving parts have come to a complete stop and the device is cooled off.**

### MAINTENANCE

- After each use clean any material out of the Trolley.
- Rinse/dry inside and outside of the Trolley after each use.
- Grease the axle and the wheel bearing area regularly with Multi-purpose grease.
- Periodically check all nuts & bolts for tightness.
- Annually clean and lightly lubricate parts with Maintenance spray.
- Use a glossy enamel spray paint to touch up scratched or worn painted metal surfaces.
- Never exceed the load capacity rating of 350kg this will damage the Trolley.

### CLEANING

- Careful handling and regular cleaning ensure that the device will remain functional and powerful for a long time.
- Brush off coarse dirt.
- Wipe down the device with a slightly damp cloth.
- Never spray the device with water or subject it to water.
- To clean, never use cleansers or solvents. This can cause irreparable damage to the device. The plastic parts can be eaten away by the chemicals.

# GJ HANDY & CO LTD USER WARRANTY POLICY

## **Users Statement of Warranty**

Each new machine is warranted against defective material or assembly of material under normal usage. The warranty applies to the original purchaser and covers faulty parts and the labour involved in replacing and repairing those parts, which are of original manufacture.

## **Period of Warranty**

### **All Webb, Handy Pro (Brushcutter & Long Handle Hedgecutter only) and Sanli domestic products.**

2 years from the original date of sale to the first domestic user.

90 days from the original date of sale to the professional/commercial user.

90 days from the original date of sale when used for hire.

A reduced warranty period of 90 days applies to those items which are subject to normal wear and tear (e.g. wheels, tyres, cutter bars, cylinders, bottom blades, belts, cables, grass bags, spark plugs).

Engines as per the manufacturer's warranty statement which will be supplied with the machine.

90 days from the original date of purchase for Replacement Spare Parts (unless normal wear & tear component, which are covered for 30 days).

All machines' must be serviced within the first 12 months from the original date of purchase to comply with the warranty, failure to do so will invalidate the 2nd year of the warranty.

### **All Handy, Handy Pro (All others), Mowerland and Q-Garden domestic products.**

1 year from the original date of sale to the first domestic user.

90 days from the original date of sale to the professional/commercial user.

90 days from the original date of sale when used for hire.

A reduced warranty period of 90 days applies to those items which are subject to normal wear and tear (e.g. wheels, tyres, cutter bars, cylinders, bottom blades, belts, cables, collection bags, spark plugs).

Engines as per the manufacturer's warranty statement which will be supplied with the machine.

90 days from the original date of purchase for Replacement Spare Parts (unless normal wear & tear component, which are covered for 30 days).

All warranty repairs must be undertaken by an authorised service dealer. These dealers have been accredited by GJ Handy & Co Ltd and agree to only use genuine parts and follow our repair procedures.

# GJ HANDY & CO LTD USER WARRANTY POLICY

## **Not covered by this warranty**

- a) The warranty policy does not cover any depreciation or damages caused by ordinary wear, rusting or corrosion, lack of correct maintenance or operation, misuse, abuse, lack of transportation or accident.
- b) The warranty policy does not cover any costs necessary for the standard periodic maintenance services instructed by the operator's manual, or service parts replacement which would include oil, filters, tyres, belts, brake linings, fuses, blades, seals and other service parts unless it can be proven that the item has evidence of faulty manufacture.
- c) The warranty policy will not cover failure or damage caused as a result of parts or accessories being modified without the written approval of GJ Handy & Co Ltd.
- d) The warranty policy will not cover the unit if non-genuine parts have been fitted and as a result damage has occurred to the unit.
- e) The warranty policy is non-transferable and is only applicable to the original purchaser.

## **Disclaimer**

- a) This warranty is only a remedy for defect of products. GJ Handy & Co Ltd will never warranty in terms of the merchantability or the fitness for a particular purpose.
- b) No person is authorised to make any warranties, representations or promises, expressed or implied, on behalf of GJ Handy & Co Ltd, or to modify the terms conditions or limitation of this warranty policy in any way.
- c) Neither GJ Handy & Co Ltd nor any company affiliated with GJ Handy & Co Ltd shall be liable in any event or manner whatsoever for incidental or consequential damages or injuries, including, but not limited to, loss of crops, loss of profit, out of pocket expenses or profits, rental of substitute equipment or other commercial losses.

## **General**

- a) Most warrantable failures show up within the first few weeks of use. These failures are usually straightforward and warranty assessment is relatively easy.
- b) Failures relating to cutter decks and belts need careful investigation, as the cause may not always be straightforward. Look for damage to blades and pulleys especially when the cutter belt or blade boss have snapped or cracked as this could be due to impact damage.
- c) Customers should always refer to the operator/instruction manual when any disputed problem arises, you will find most areas covered within the manual.





For spares or support of your handy product,  
please contact us:

Tel: 01793 333212

(Mon – Fri 8.00am to 5.30pm excl. Bank Holidays)

Email: [customerservice@handydistribution.co.uk](mailto:customerservice@handydistribution.co.uk)

**To see our range of garden machinery & equipment visit:**

**[www.thehandy.co.uk](http://www.thehandy.co.uk)**

**Making gardening easier & affordable since 1938**

Distributed by Handy Distribution, Murdock Road, Dorcan, Swindon, SN3 5HY