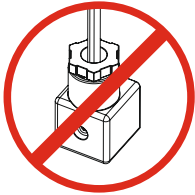
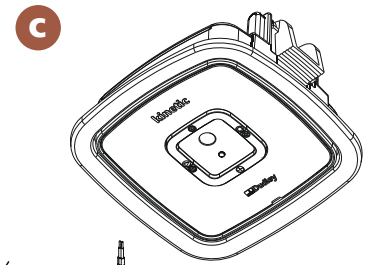
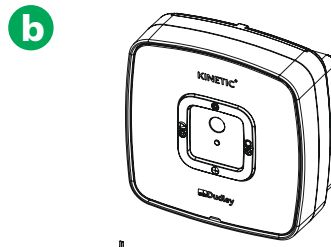
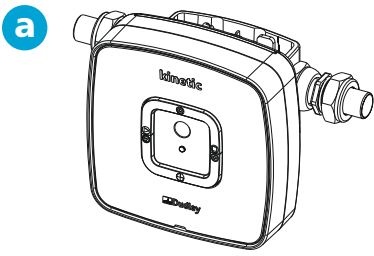


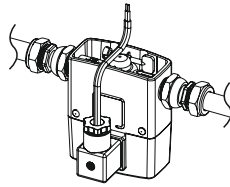
1 KINETIC QUICK INSTALLATION GUIDE

This is the quick installation and setup guide for Kinetic.

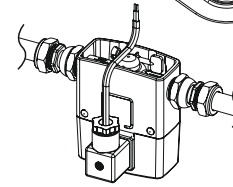
Select Kinetic mounting option below.



Pipe Mounted
Solenoid Cable
Not Required
(Battery ONLY)



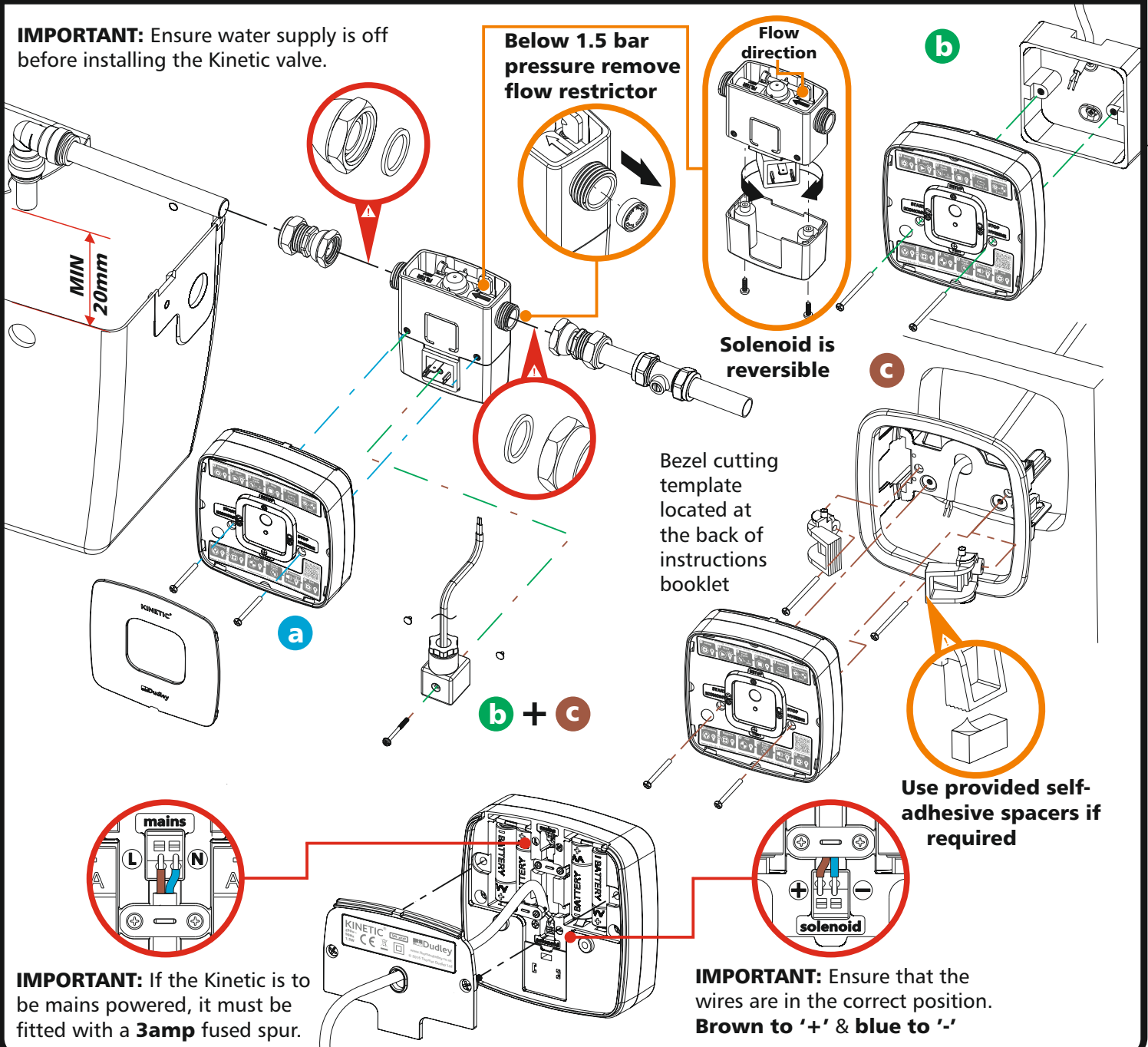
Remote Mounted
On Pattress Box
(Not Supplied)
Cable Required
(Battery and/or
Mains Powered)



Flush Mounted
Solenoid Cable
Required
(Battery and/or
Mains Powered)

1 KINETIC QUICK INSTALLATION GUIDE Continued

IMPORTANT: Ensure water supply is off before installing the Kinetic valve.

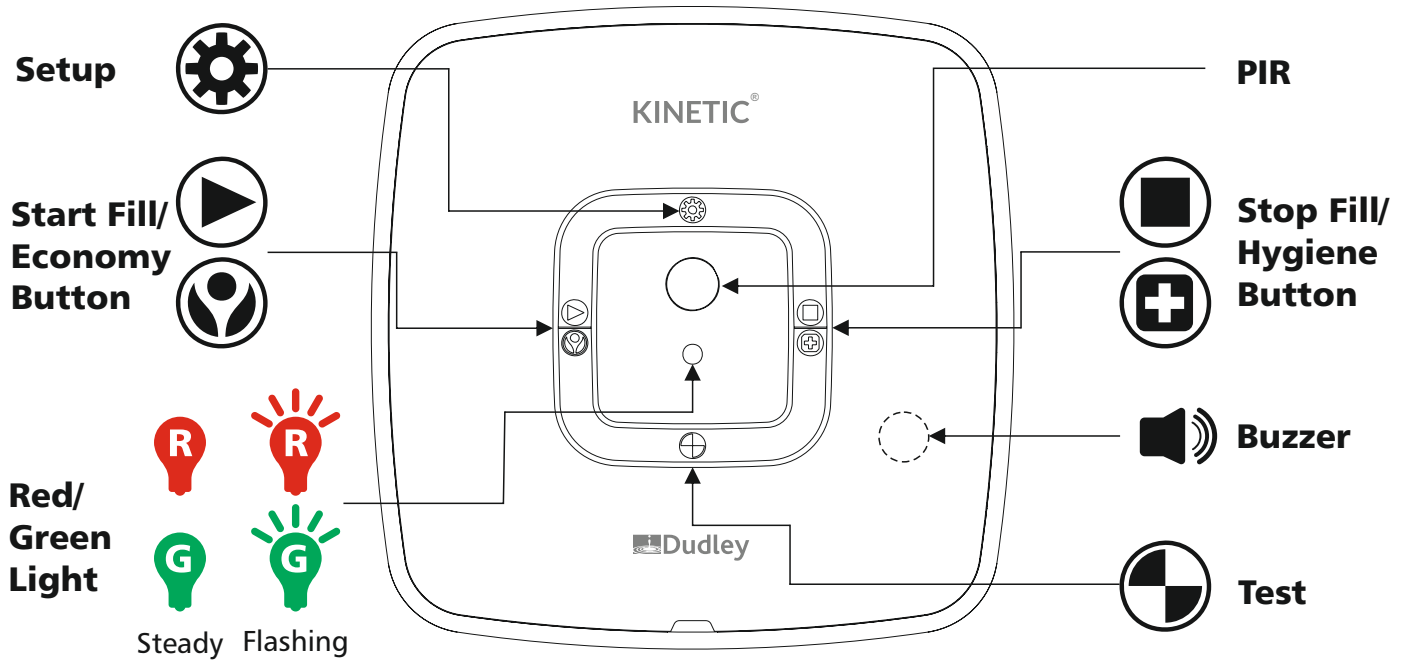


IMPORTANT: If the Kinetic is to be mains powered, it must be fitted with a **3amp** fused spur.

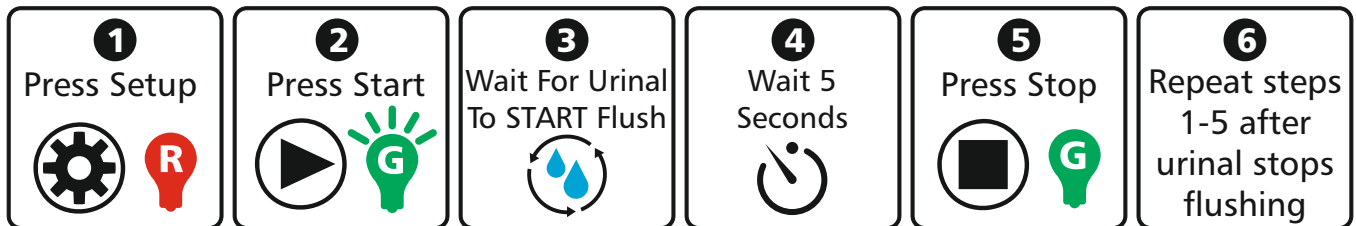
IMPORTANT: Ensure that the wires are in the correct position.
Brown to '+' & blue to '-'

2 KINETIC QUICK SETUP GUIDE

IMPORTANT: Ensure water supply is turned on before setting up the Kinetic

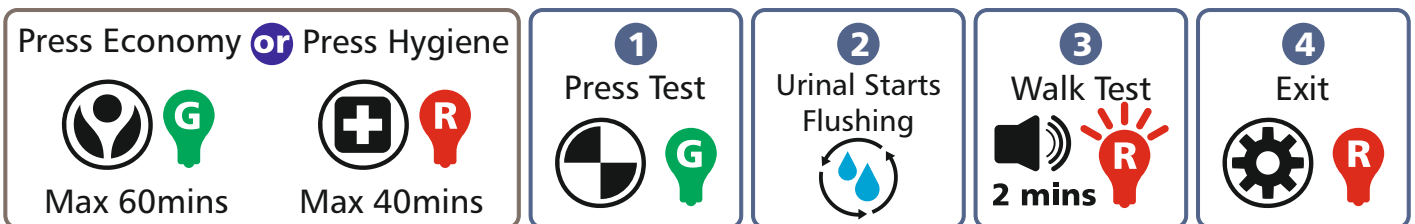


Setting The Residual Water Level & Fill Time



Mode Select

Walk Test



IMPORTANT: The Kinetic keypad will lockout after 30mins of inactivity. To lock/unlock press and hold the setup & test buttons for 3 seconds. Refer to booklet for further details



0121 530 7000



sales@thomasdudley.co.uk



www.thomasdudley.co.uk



0121 557 5345

TD Thomas Dudley Ltd.
Manufacturing in the UK since 1920