



Many doors weigh over 18kg and may require consideration when handling



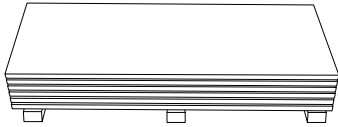
**MAY CONTAIN GLASS** The glass used in glazed products meets the requirements of BS6206 or EN12150.



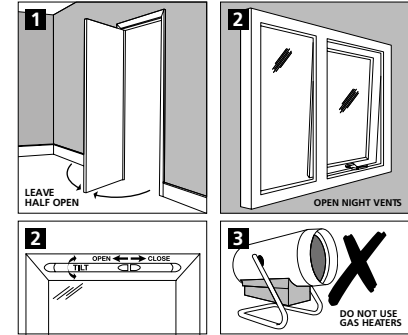
## STORING & FINISHING INTERIOR DOORS

### Storing

- Store doors flat in dry conditions on 3 equally spaced lever bearers.
- Plastic wrapping should remain on the door until ready for finishing & installing.



- 1 Do not install in buildings immediately after plastering or other wet trades. Keep doors half open.
- 2 Open trickle vents and set window sash on night vent position 24 hours a day. This will ensure a constant flow of dry air from outside, taking away any damp air from inside the property.
- 3 We do not recommend the use of gas fired heaters in new build situations due to the release of carbon dioxide & water vapour adding further moisture to the air.



### Finishing

- Our doors are NOT suitable for waxes, polishes or oils as these products do not protect the door.
- Adequate drying-time must be allowed between the coats.
- **Moulded primed, Moulded undercoated & Paint Grade** doors require decoration to the two faces, four edges and cut outs for locks, handles and hinge recesses using suitable paint within three days of fitting. If the door edges need to be trimmed then you will need to prime the edges before finishing.

- **Moulded fully finished** doors require no decoration to the two faces, however, the four edges of the door and cut outs for locks, handles and hinge recesses will require decoration using suitable paint.
- **Real wood veneer or foil veneer** doors are fully finished, only door edges and cut outs for locks, handles and hinge recesses require finishing using a varnish or stain.

Regular maintenance of this door should be carried out in accordance with the paint manufacturer's instructions, to prevent breakdown of the wood finish and to protect the timber from deterioration. Failure to follow the finishing guidelines may result in the door warping.



JELD-WEN UK LTD

Retford Road, Woodhouse Mill, Sheffield S13 9WH  
Tel: 0845 122 2890 Visit us at: [www.jeld-wen.co.uk](http://www.jeld-wen.co.uk)



Many doors weigh over 18kg and may require consideration when handling



**MAY CONTAIN GLASS** The glass used in glazed products meets the requirements of BS6206 or EN12150.



## FITTING INTERIOR DOORS

1 Unwrap doors 24 hours before fitting. Prior to hanging this door, inspect for damage and do not proceed if any damage or defect is evident. Installation of the door constitutes acceptance of aesthetics quality.



2 Non fire rated doors should be hung on two 76 mm (3") hinges or where large differences of temperature or humidity may occur, for example a bathroom or kitchen doors should be hung on three 76 mm (3") hinges. Glazed doors should also be hung on on three 76 mm (3") hinges.



3 Doors can be trimmed by up to 4 mm on each long edge and 6 mm from the bottom. We do not recommend trimming the top of the door as this is where the door identification is printed.

- When fitting the door, pay particular attention to the lock block area. This is a reinforced area to accommodate a latch and handle. It is located approximately 900 mm from the bottom of the door, which measures to the centre of the lock block giving 160 mm of area either side of this measurement. This is marked by the words LOCK printed on the top edge of the door indicating which side. The block is 320 mm high & 60 mm wide. Glazed doors have reinforced areas running the length of the door on each side, in this case you have 60mm from the edge of the door to place a latch and handle.
- Semi solid and solid core doors do not have a lock block area, therefore, you may place a latch or handle in any position along the door edge.
- We do not recommend the use of either Auger or Speed bit drill bit as this can result in damage to the door, use appropriate wood drill bits.
- Do not fix face fixed door closers to this door.
- For fire rated fitting instructions, refer to the appropriate CF instruction that comes with the door.



JELD-WEN UK LTD

Retford Road, Woodhouse Mill, Sheffield S13 9WH

Tel: 0845 122 2890 Visit us at: [www.jeld-wen.co.uk](http://www.jeld-wen.co.uk)