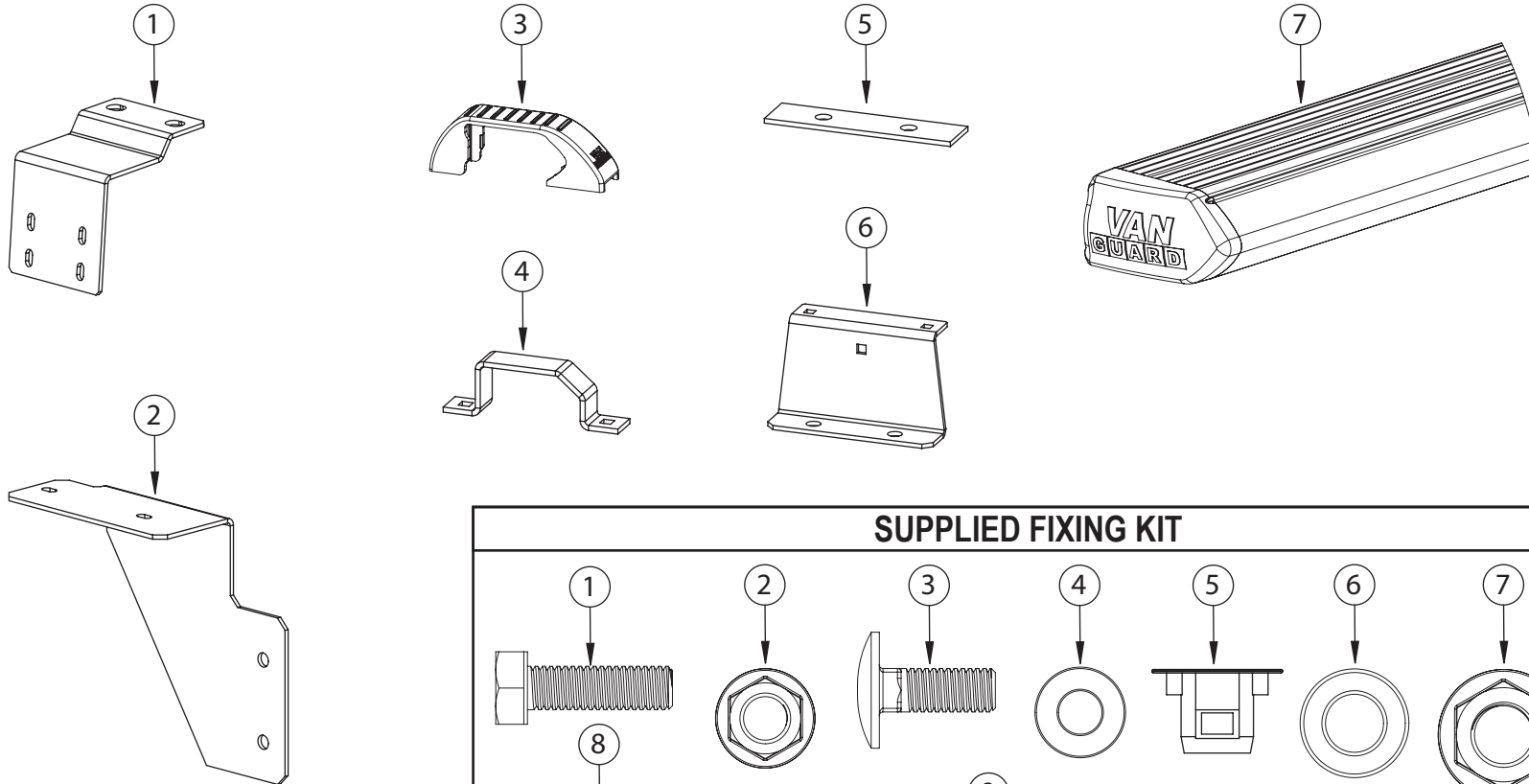


VG286-2

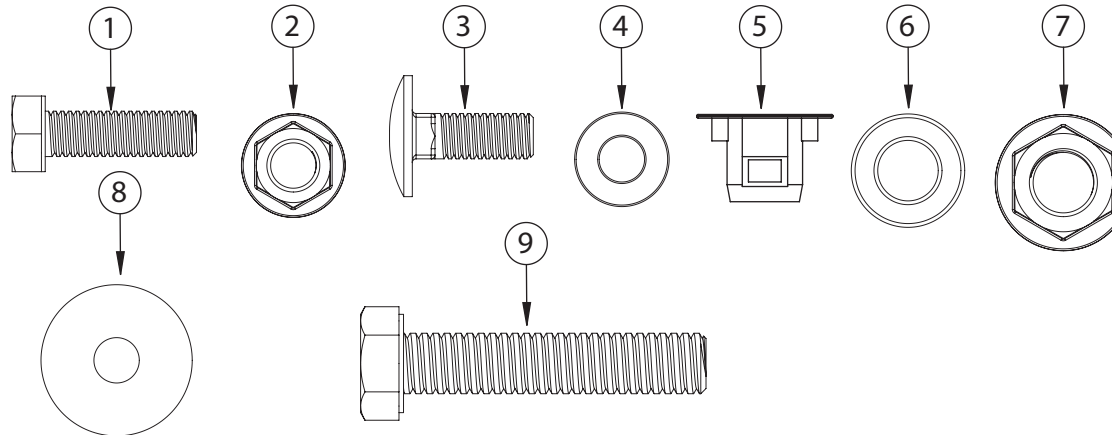
2 Heavy duty aluminium roof bars - Movano 2010 on / Master 2010 on / NV400

SUPPLIED COMPONENTS



#	DESCRIPTION	QTY
1	MIDDLE INNER FIXING BRACKET	2
2	REAR INNER FIXING BRACKET	2
3	TOP HAT COVER	4
4	TOP HAT	4
5	H120-1 RUBBER PAD	8
6	ROOF BRACKET	4
7	ROOF BAR	2

SUPPLIED FIXING KIT



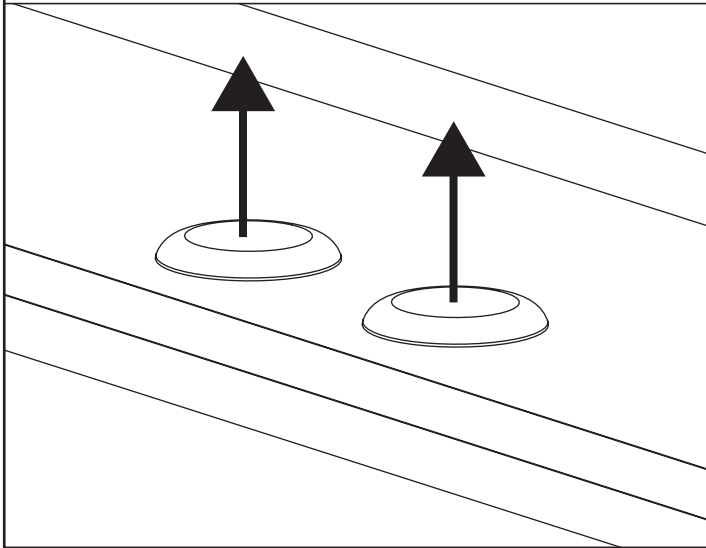
#	DESCRIPTION	QTY
1	M6x20 HEX BOLT	8
2	M6 SERRATED FLANGE NUT	8
3	M6x16 COACH BOLT	8
4	M6 WASHER	8
5	M6 1/4 TURN NUT INSERT	8
6	M8 WASHER	8
7	M8 SERRATED NUT	8
8	RUBBER WASHER	8
9	M8x40 HEX BOLT	8

TOOLS REQUIRED: 10mm (X1) & 13mm (X2) SPANNER / RATCHET

This FITTING INSTRUCTION is the property of VAN GUARD ACCESSORIES LTD. and must not be used for manufacturing purposes, copied nor communicated in any way to third parties without written permission from VAN GUARD ACCESSORIES LTD.
IN8099_A - IW - 03/05/2013

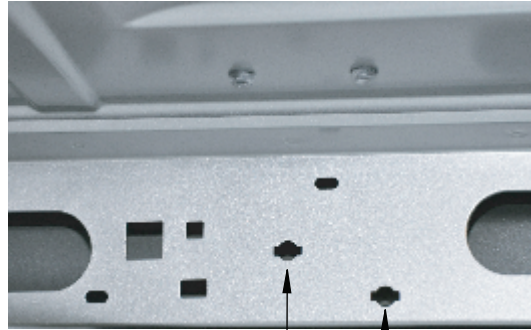
Van Guard Accessories Ltd
Fair Oak Close, Exeter Airport Business Park,
Exeter, Devon, EX5 2UL
www.van-guard.co.uk

1 Remove roof plugs to reveal the vehicles fixing points.

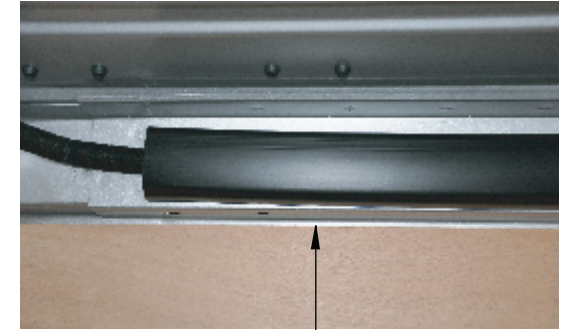


3 Loosely bolt the middle inner fixing brackets to the inside of the vehicle by inserting the M6 1/4 turn nut inserts into the positions shown below. Then place the middle inner bracket in position and loosely bolt into the M6 1/4 turn inserts using M6x20 hex bolts and M6 washers.

Please note the cable trim may have to be removed. This trim can be refitted after the inner bracket has been secured.

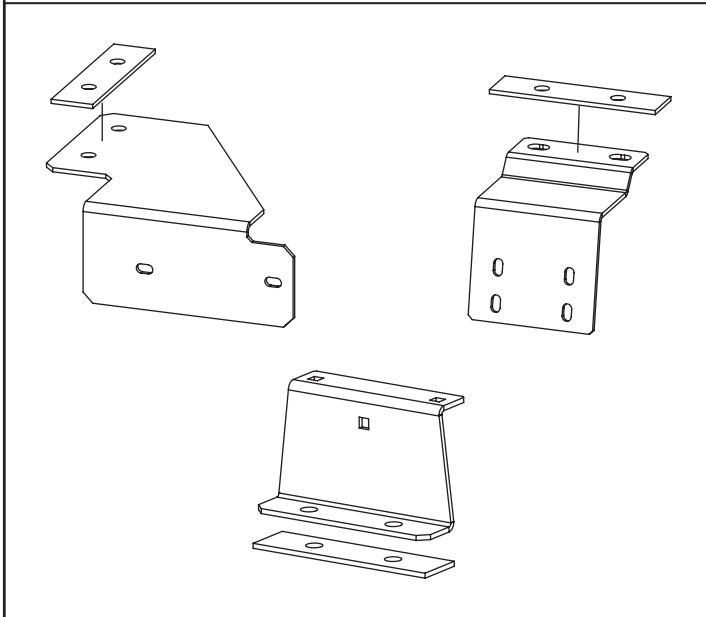


M6 1/4 TURN INSERT LOCATIONS

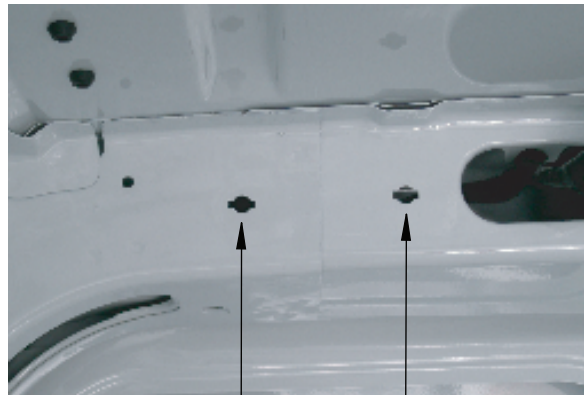


TRIM MAY NEED REMOVING & RE-FITTED AFTER

2 Stick rubber pads to the underside of all brackets.



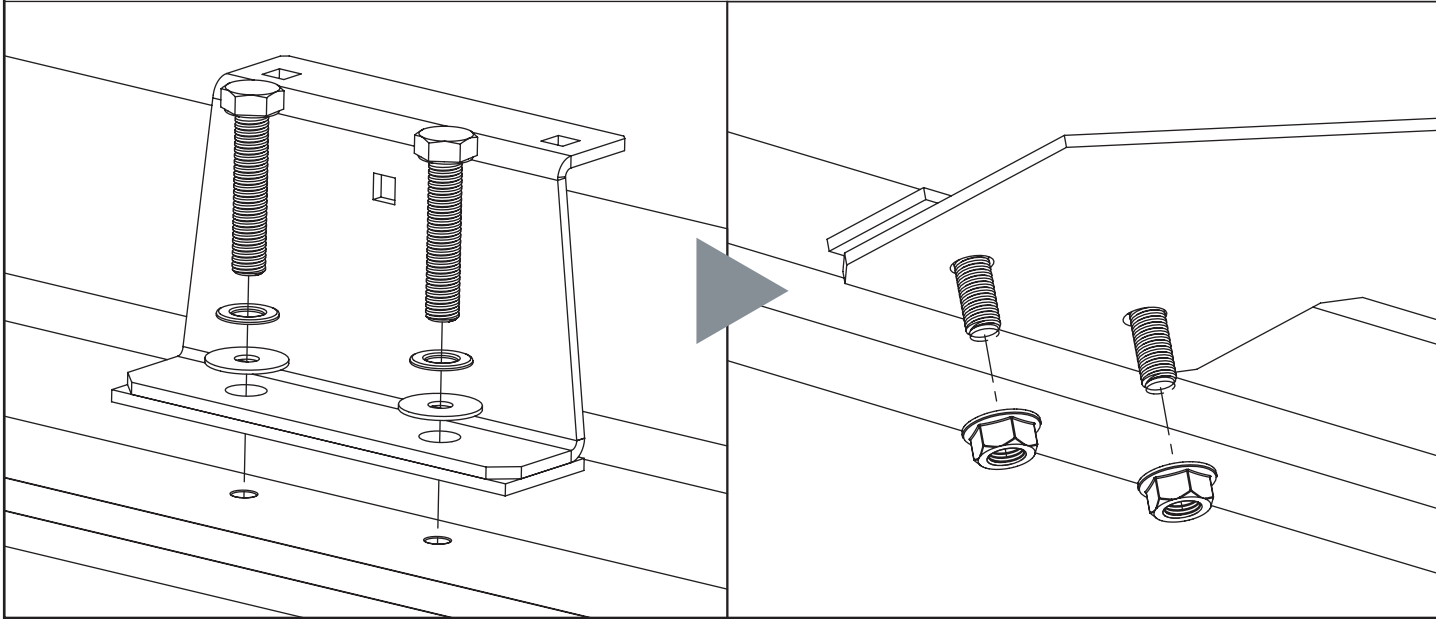
4 Loosely bolt the rear inner fixing brackets to the inside of the vehicle by inserting the M6 1/4 turn nut inserts into the positions shown below. Then place the rear inner bracket in position and loosely bolt into the M6 1/4 turn inserts using M6x20 hex bolts and M6 washers.



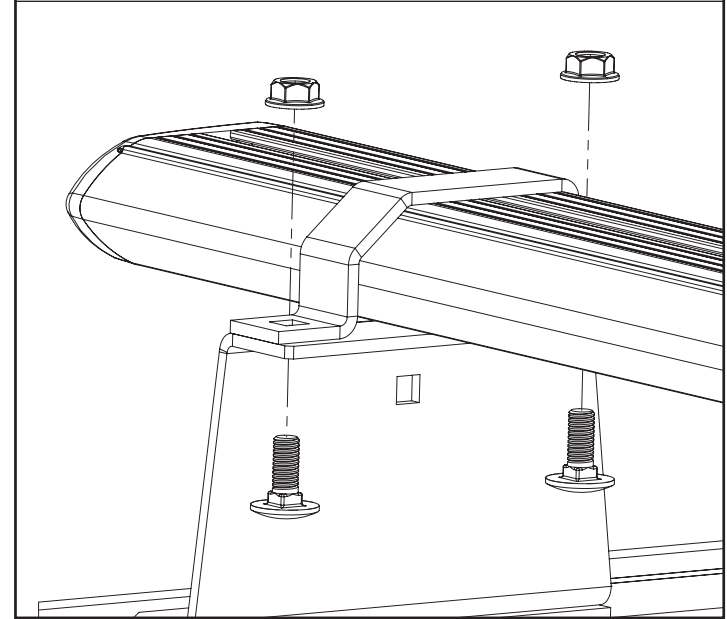
M6 1/4 TURN INSERT LOCATIONS



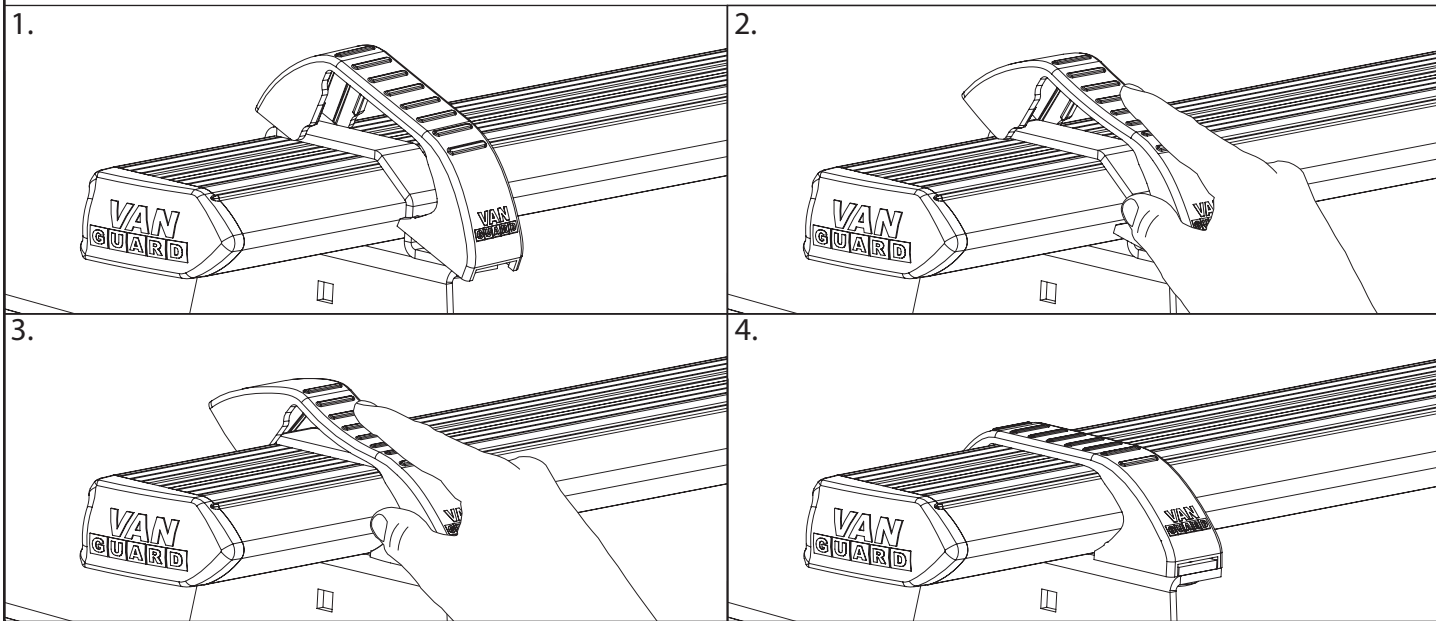
5 Secure the roof brackets by bolting down through the fixing points and through the inner fixing brackets using M8x40 hex bolts, M8 washers & rubber washers, secure under the roof using M8 serrated nuts. Ensure that the top hat flange is facing inwards.



6 Place roof bars onto the roof brackets with the t-slot facing upwards, secure using top hat brackets, M6x16 coach bolts & M6 serrated nuts.



7 Flex the top hat covers over the top hat brackets into position as shown below. Ensure that the covers click into the front and rear of the top hat brackets.



8 Once in position tighten all M6 fixings to 8Nm and all M8 fixings to 12Nm. Periodically check all fixings.



NOTES:
Maximum load is 55kg per bar. Please check that the vehicle manufacturers load bearing capacity for the roof is not exceeded. (Refer to the vehicle handbook)
Periodically check all fixings.
Retain these instructions for future reference.