

# VG308-3

## 3 Heavy duty aluminium roof bars - Ford Transit Custom High Roof

SUPPLIED COMPONENTS		#	DESCRIPTION	QTY
		1	REAR OFFSIDE / FRONT NEARISDE ROOF BRACKET	2
		2	FRONT OFFSIDE / REAR NEARISDE ROOF BRACKET	2
		3	MIDDLE ROOF BRACKET	2
		4	TOP HAT	6
		5	TOP HAT COVER	6
		6	ROOF BAR	3
		7	H90 RUBBER PAD	6
SUPPLIED FIXING KIT		#	DESCRIPTION	QTY
		1	M6x20 HEX BOLT	6
		2	M6 SERRATED NUT	18
		3	M6x16 COACH BOLT	12
		4	M6 WASHER	6
		5	RUBBER WASHER	6

TOOLS REQUIRED: 10mm SPANNER / RATCHET (x2), DRILL, 4mm & 6mm DRILL BIT

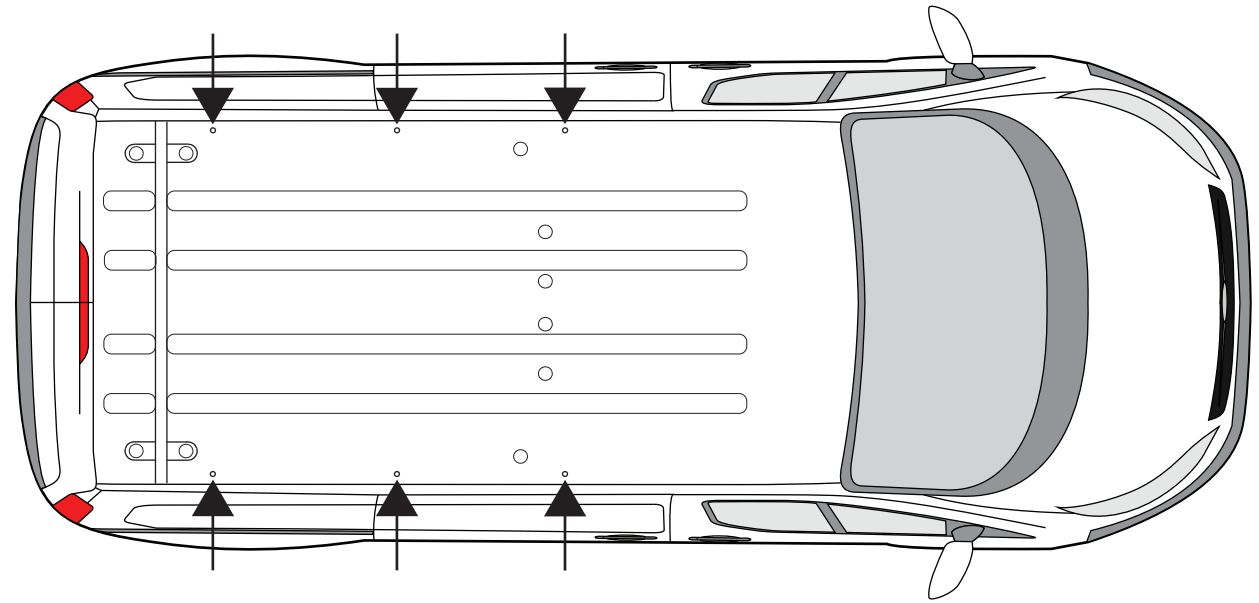
This FITTING INSTRUCTION is the property of VAN GUARD ACCESSORIES LTD. and must not be used for manufacturing purposes, copied nor communicated in any way to third parties without written permission from VAN GUARD ACCESSORIES LTD.

IN8111\_A - IW - 29/07/2014

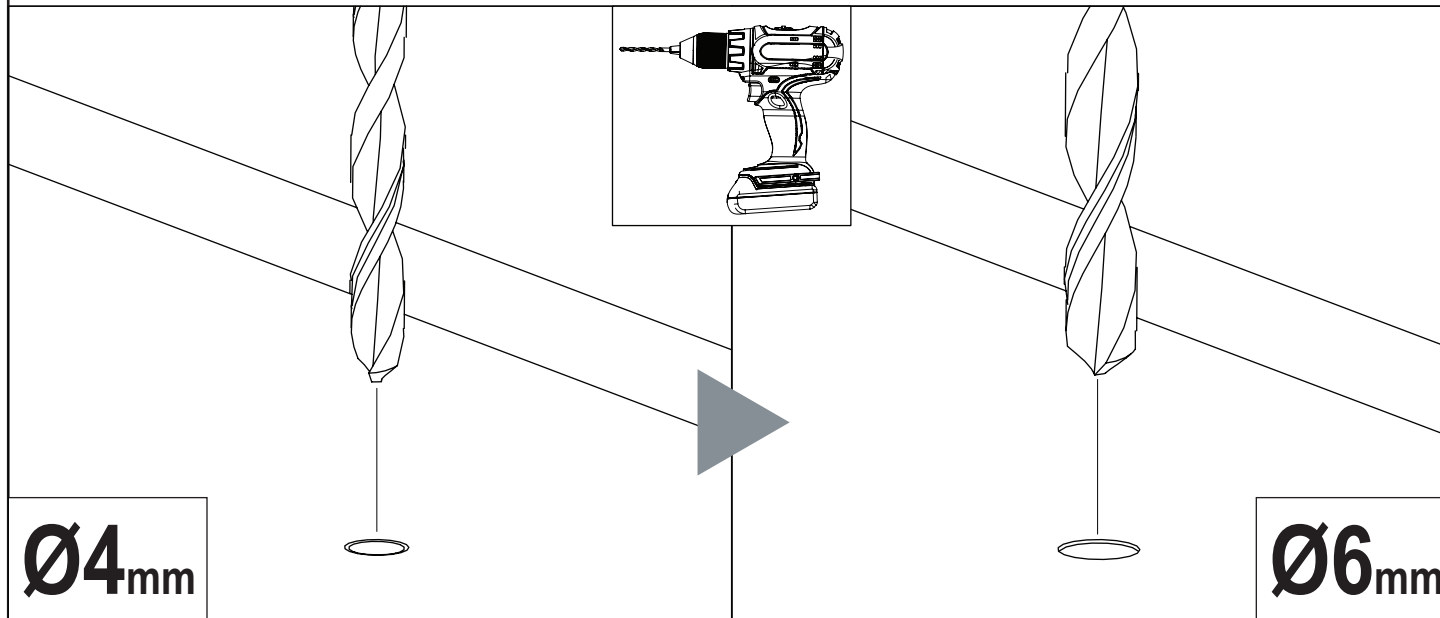
Van Guard Accessories Ltd  
 Fair Oak Close, Exeter Airport Business Park,  
 Exeter, Devon, EX5 2UL  
[www.van-guard.co.uk](http://www.van-guard.co.uk)

**!** Whilst every effort has been made to ensure all our products can be safely fitted, if any product requires drilling in to the vehicle, we ask you to check that there is no possibility of causing damage when fitting. Changes to the van sometimes occur, so it's always good practice to check before drilling as we cannot accept responsibility for any damage caused by the fitting of any of our products. (When drilling always wear safety glasses.)

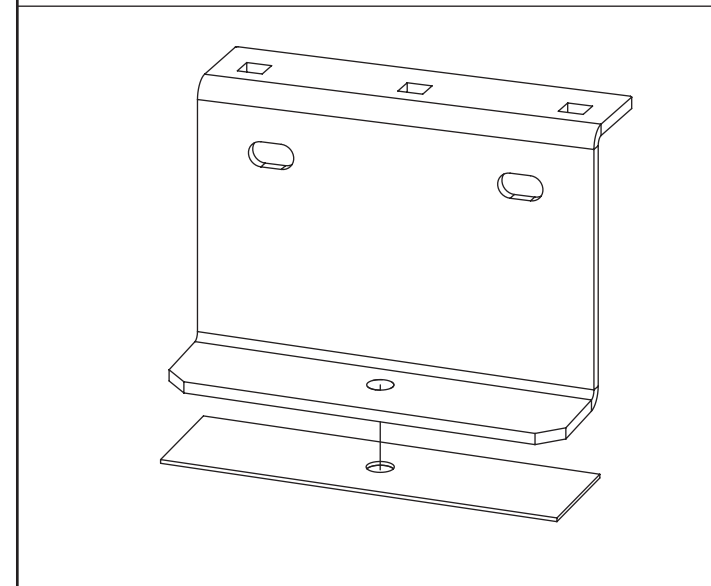
**1.1** As there are no fixing points on the vehicle it's necessary to drill the roof. The vehicles roof has 6 x dimples (3 per side), use these as positions to drill the fixing points. Refer to step 1.2 for the required drill size. **Please note, the roof plugs / gromits are not used to fit this product.**



**1.2** Use the positions shown in step 1.1 to drill the fixing points  $\text{\O}6\text{mm}$ . **It is recommended to drill a  $\text{\O}4\text{mm}$  pilot hole first.**



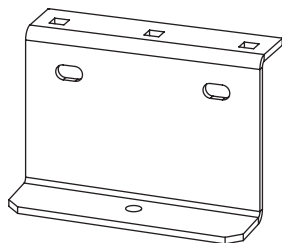
**2** Stick rubber pads to the underside of the roof brackets.



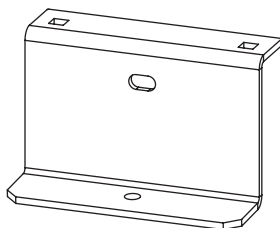
**3**

The front / rear roof brackets are handed to suit both sides of the vehicle and are angled to suit the slope of the roof. The brackets need to be positioned on the vehicle as shown below with the top hat flange facing inwards.

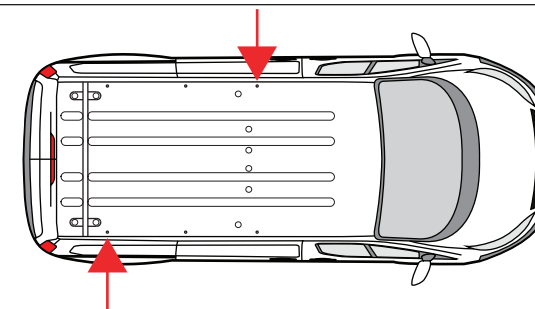
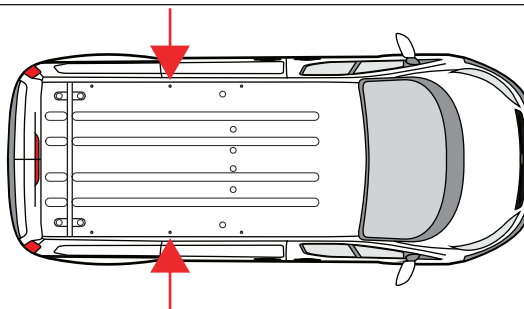
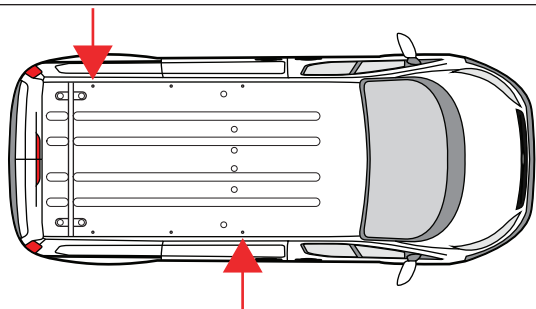
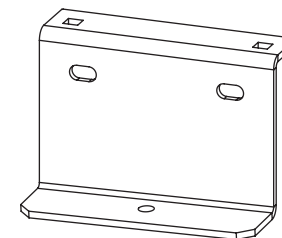
FRONT OFFSIDE / REAR NEAR SIDE



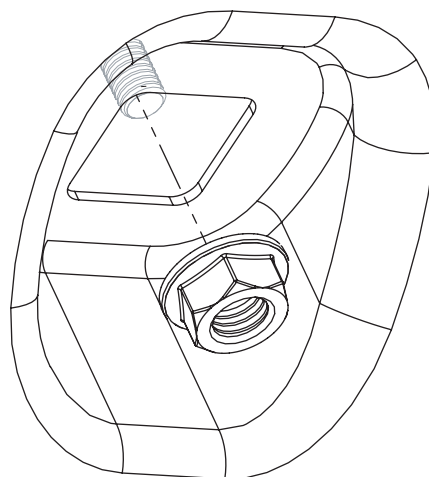
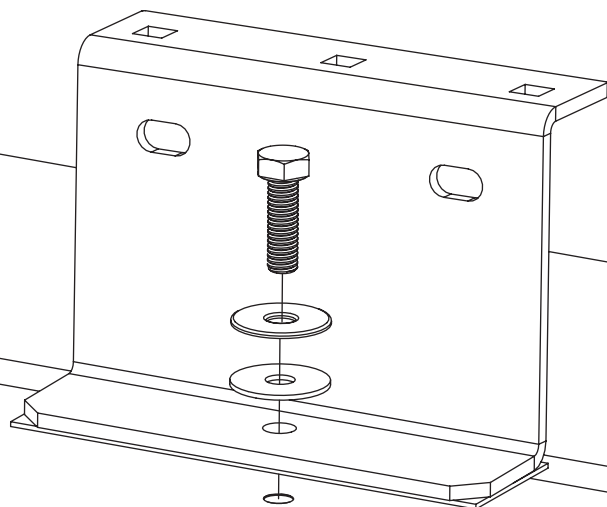
MIDDLE



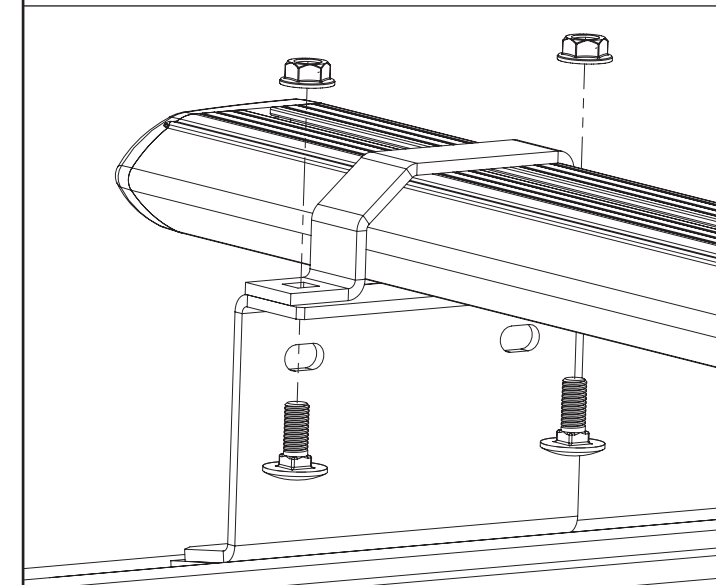
FRONT NEAR SIDE / REAR OFFSIDE

**4**

Secure the roof brackets to the fixing points using M6x20 hex bolts, M6 washers & rubber washers, secure under the roof using M6 serrated nuts (use a long handled socket to reach the M6 serrated nut). Ensure that the top hat flange is facing inwards.

**5**

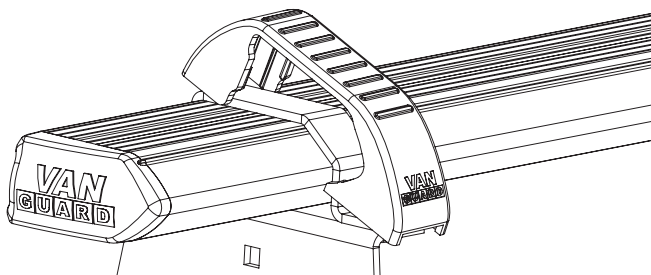
Place roof bars onto the roof brackets with the t-slot facing upwards, secure using top hat brackets, M6x16 coach bolts & M6 serrated nuts.



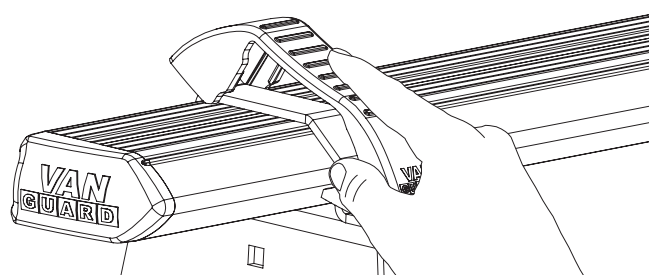
**6**

Flex the top hat covers over the top hat brackets into position as shown below. Ensure that the covers click into the front and rear of the top hat brackets.

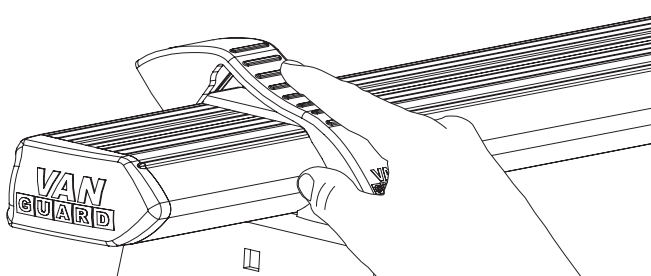
1.



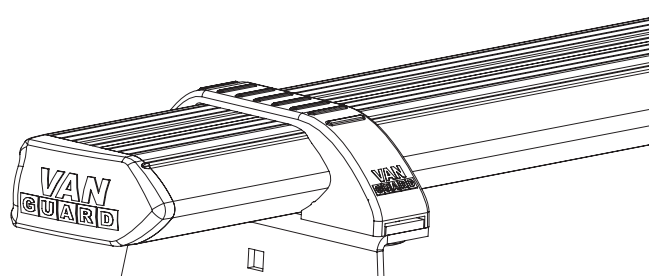
2.



3.



4.

**7**

Once in position tighten all fixings to 8Nm. Periodically check all fixings.



**TIGHTEN  
TO  
8Nm**

**NOTES:**

Maximum load is 55kg per bar. Please check that the vehicle manufacturers load bearing capacity for the roof is not exceeded. (Refer to the vehicle handbook)

Periodically check all fixings.

Retain these instructions for future reference.

# VAN

# GUARD