

Helpdesk/Technical Support

Technical Support E-mail: tech@swann.com

Telephone Helpdesk

USA Toll Free	1-800-627-2799	AUSTRALIA	1800 788 210
USA Parts & Warranty (M-F, 9am-5pm US PT)	1-800-627-2799	NEW ZEALAND Toll Free	0800 479 266
		UK	0808 168 9031

Limited Warranty Terms & Conditions

Swann Communications warrants this product against defects in workmanship and material for a period of one (1) year from its original purchase date. You must present your receipt as proof of date of purchase for warranty validation. Any unit which proves defective during the stated period will be repaired without charge for parts or labour or replaced at the sole discretion of Swann. The end user is responsible for all freight charges incurred to send the product to Swann's repair centres. The end user is responsible for all shipping costs incurred when shipping from and to any country other than the country of origin.

The warranty does not cover any incidental, accidental or consequential damages arising from the use of or the inability to use this product. Any costs associated with the fitting or removal of this product by a tradesman or other person or any other costs associated with its use are the responsibility of the end user. This warranty applies to the original purchaser of the product only and is not transferable to any third party. Unauthorized end user or third party modifications to any component or evidence of misuse or abuse of the device will render all warranties void.

By law some countries do not allow limitations on certain exclusions in this warranty. Where applicable by local laws, regulations and legal rights will take precedence.

For Australia: Our goods come with guarantees which cannot be excluded under Australian Consumer Law. You are entitled to a replacement or refund for a major failure and for compensation for any other reasonably foreseeable loss or damage. You are also entitled to have the goods repaired or replaced if the goods fail to be of acceptable quality and the failure does not amount to major failure.



M1080ZLDCAM_020616E | © Swann 2016

Mounting your Camera

The camera can be mounted onto a flat, vertical or horizontal surface using the supplied mounting screws. Materials such as hardwood, brick or masonry are ideal. You can mount the camera onto a metal surface, but you'll need to supply your own mounting hardware.

To mount the camera:

- Loosen (do not fully remove) the 3 hex screws (T6H) on the base of the camera mount. The mounting bracket will come away from the dome assembly
- If you're mounting to a wooden surface, screw the bracket directly to the surface
- When mounting to a masonry surface, you'll need to use the included wall plugs

Aiming the camera:

- Gently loosen the 3 hex screws (T6H) located at

the base of the camera

- The gimbal mount can be rotated left or right
- The camera can be aimed in almost any direction from wherever you choose to mount it. After you've finished adjusting the viewing angle, tighten each screw to lock the camera's position in place

- The camera zoom is controlled by your DVR's PTZ controls

Positioning the cables:

- When running the cable, try to avoid bending it at sharp angles
- Avoid positioning the cable near live electrical wiring as electrical current generates a magnetic field which can interfere with the signal from your camera

FCC Verification

This equipment has been tested and found to comply with the limits for Class B digital device, pursuant to part 15 of the FCC Rules. These limits are designed to provide reasonable protection against harmful interference in a residential installation. This equipment generates, uses and can radiate radio frequency energy and, if not installed and used in accordance with the instructions, may cause harmful interference to radio or television reception, which can be determined by turning the equipment off and on, the user is encouraged to try to correct the interference by one or more of the following measures:

- Reorient or relocate the receiving antenna
- Increase the separation between the equipment and the receiver
- Connect the equipment into an outlet on a circuit different from that to which the receiver is connected
- Consult the dealer or an experienced radio/TV technician for help

These devices comply with part 15 of the FCC Rules. Operation is subject to the following two conditions:

- (1) These devices may not cause harmful interference.
- (2) These devices must accept any interference received, including interference that may cause undesired operation.



HD Zoom Security Camera

For use with Swann 1080P HD DVRs

EN

INSTRUCTION MANUAL

Introduction

Congratulations on your purchase of this HD Zoom Security Camera.

- Use the On-Screen Display (OSD) controller & built-in software to customize the camera settings including color, brightness & wide dynamic range for the best video quality every time.
- This camera can be used in combination with other analog surveillance technology including AHD, TVI, CVI from Swann & other brands. It's the perfect addition if you already have a recording solution (DVR) & need extra cameras.
- The camera joystick is used to set the signal modes for the camera.
- The zoom function is controlled by your DVR's PTZ controls. Please search the Support Information at support.swann.com

(search for '1080ZLD') for instructions on controlling this feature.

Important note: All jurisdictions have specific laws and regulations relating to the use of cameras. Before using any camera for any purpose, it is the buyer's responsibility to be aware of all applicable laws and regulations that prohibit or limit the use of cameras and to comply with the applicable laws and regulations.

Warning: Modifications not approved by the party responsible for compliance could void user's authority to operate the equipment.

Important safety instructions

- 1) Make sure product is fixed correctly and stable if fastened in place.
- 2) Do not operate if wires and terminals are exposed.

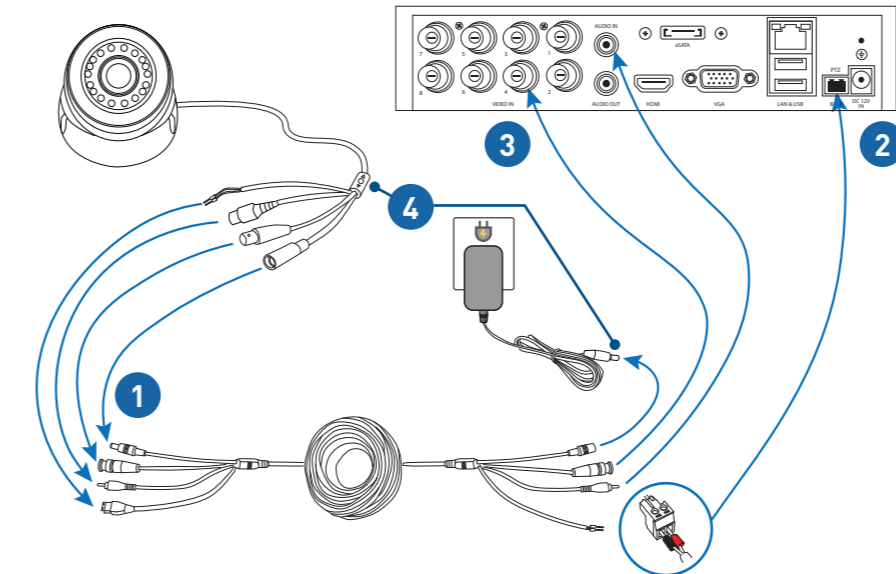
Choosing a location for your Camera

This camera has an on-screen configuration menu to configure various image settings as they apply to the camera and the scene that you wish to view.

- 1) You should endeavor to set the camera up close to the area you wish to view before you install the camera so that you have access to the joystick and can adjust the image settings.
- 2) What you want to monitor and where you'll get the best view of it.
- 3) How you're going to connect the camera to your monitoring system; you should plan the route from the recorder to each camera
- 4) How to keep the camera out of harm's way. It's recommended to mount your cameras in an elevated position to prevent easy access.
- 5) Place your camera as close to the area of interest as practicable. The best position is from about 3-4m (9-13ft) above looking slightly down.

- 6) Although the sky looks nice when you look at the live view from your camera, it is an unlikely direction for an offender to approach from. Keep the camera pointed down away from the sky or ceiling. This will also minimize glare from lighting affecting the image.
- 7) Think about the most likely way a potential offender may approach your home and position your cameras to give you the best coverage of these areas.
- 8) The camera's casing is resistant to water, different weather conditions and tampering. However, the cable and connectors are vulnerable and require protection.
- 9) Even though the camera is weather and water-resistant, prolonged exposure to adverse weather conditions such as sunlight or excessive moisture, may eventually damage the internal components of the camera and adversely affect its performance.

Connecting your Camera



Connection Guide

- 1) Connect the camera's RS485, Video, Audio and Power connectors to the Video, Audio & Power cable. Make sure to twist and lock video connectors for a secure connection. Screw in the RS485 connectors making sure that the red and black line up with the positive and negative icons on the RS485 connection (check the tag on the camera cable).
- 2) Remove the green RS485 terminal block from the PTZ port on the DVR, and then using a flat-head screwdriver, attach the pair of PTZ wires on the other end of the Video & Power cable (RED to + / A socket, BLACK to - / B socket) to the RS485 terminal block. When wiring connections are complete, plug the RS485 terminal block back into the PTZ port on the DVR.
- 3) Connect the camera to a video input on the DVR. For ease in configuring the RS485 settings, we suggest connecting it to channel 1 initially.
- 4) Connect the camera to the power adapter. After the camera is powered on, if you do not see an image or the image is poor, please check that you are using the correct video output signal for your DVR. Hold for 2 seconds; Up for Analog, Left for AHD, Right for TVI and Down for CVI.

Configuring PTZ settings

The DVR's default RS485 settings should allow you to use the camera zoom without any additional configuration. But to be sure, check that the settings in your DVR's Device PTZ menu match the ones shown here. For more information on configuring PTZ settings, consult your DVR user manual.

Camera No.:	Channel1
Baud Rate:	9600
Data Bit:	8
Stop Bit:	1
Parity:	None
Flow Ctrl:	None
PTZ Protocol:	Pelco-D
Address(0-255):	1

PRO-SERIES HD 1080P



#1
Universally
Compatible

Works with all leading surveillance brands

HD Zoom Security Camera

1080p HD Dome Camera with 4 x Zoom & Auto-Focus

1080P

HIGH DEFINITION

4X

OPTICAL ZOOM



AUDIO MONITORING



DAY/NIGHT VISION



WEATHER PROOF

DIY

EASY INSTALLATION

Be protected & see every detail in 1080p HD

- Seeing is believing with 1080p (2.1 Megapixels) HD perfect for close up detail such as license plates, faces, clothing colors & more
- Enjoy vari-focal controls for high quality video in any conditions with the flexibility to go from wide angle viewing to long range zoom
- Latest infrared cut filter for amazing night vision & clarity in low light to 100ft / 30m, with sturdy aluminum camera construction to suit indoor & outdoor applications with IP66 rating for any weather conditions
- Camera features a built-in microphone so you can see & hear what's happening^ and longer 100ft/30m cable offers more options when choosing a mounting location for the camera
- Use the On-Screen Display (OSD) controller & built-in software to customize the camera settings including color, brightness & wide dynamic range for the best video quality every time
- This camera can be used in combination with other analog HD surveillance technology including AHD, TVI, CVI from Swann & other brands. It's the perfect addition if you already have a recording solution (DVR) & need extra cameras
- Deter thieves, safeguard loved ones, protect your property & cut the cost of crime with this superior surveillance camera from Swann

SWPRO-1080ZLD

For more information on this product visit www.swann.com

HD Zoom Security Camera

1080p HD Dome Camera with 4 x Zoom & Auto-Focus

What's in the box?

All installation accessories included

- PRO-1080ZLD™ Dome Camera
- BNC Cable 100ft / 30m with integrated RS485 Connector
- Power Adapter
- Mounting Screws & Plugs
- Operating Instructions
- Theft Deterrent Stickers



Specifications

PRO-1080ZLD™ CAMERA

Video

Video Quality	1080p
Viewing Angle	27 - 90°
Lens Focal Length	2.8 - 12mm

Night Vision

Night Vision Distance	Up to 100ft / 30m
IR cut Filter	Yes

General

Indoor / Outdoor	Indoor / Outdoor, IP66 rated
Audio Range	Up to 16ft / 5m
Operating Power	DC 12V
Operating Temperature	-4°F ~ 122°F / -20°C ~ 50°C
Body Construction	Aluminum
Dimensions - Camera	LWH 5.24" x 5.24" x 3.54" / 133mm x 133mm x 90mm
Weight - Camera	1.47lbs / 626g

Code

Swann Code	SWPRO-1080ZLD
------------	---------------

Take a closer look



See the difference

Enjoy video resolution that's superior to traditional security systems with 4x optical zoom, realistic colors, wide angle and impressive image quality.



#1
Universally
Compatible

* As the world's #1 name in DIY video surveillance Swann is proud to launch new Universally Compatible cameras that are built for the leading Analog HD surveillance technology including AHD, TVI, CVI from Swann & other brands



Our Promise

Swann stands by its promise of Lifetime Support to make advanced security easy to use, install and maintain. Everything is in the pack but if you need it Swann's help desk is available **24 hours a day, 7 days a week** for the life of the product.

Installation is easy

Do-it-Yourself

Installing this Swann product is simple. For instructions, tips and videos see the operating instructions in this pack or visit www.swann.com

Professional Installation

Need extra help? We have an installer in your region! For more visit www.swann.com

For more information on this product visit www.swann.com



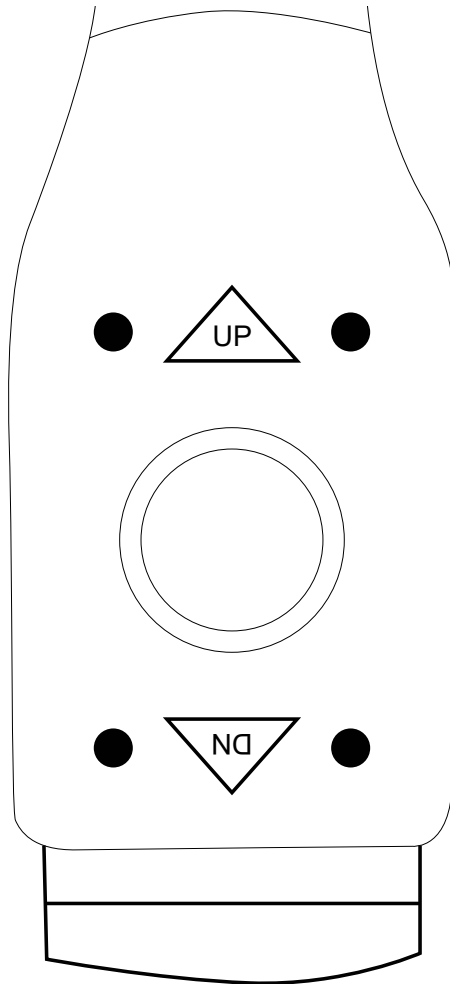
PRO-SERIES HD

On-Screen Display

INSTRUCTION MANUAL



Joystick Control



This camera has a joystick control on the cable connection to allow you to configure the camera settings to suit your DVR signal. The joystick is a simple 4 way stick configuration (up and down are noted on the fascia) and pressing in on the top of the stick is used to open the on-screen menu and as the 'Enter' key while in the OSD menu.

The first use of the joystick is to set the correct output signal mode of the camera to correspond with the type of recorder you are using. The signal is changed by holding for approximately 2 seconds in the direction corresponding to the signal you wish to select. The camera signal will shut off briefly then the camera will restart the signal in the new mode.

NB: If you select the wrong signal type you may see only a Black & White image, scrambled lines or nothing at all. If this happens, choose the correct signal type for your device by holding the stick as shown below.

Up – 960H

This is the analog output used with all analog signal (CVBS or Composite) recorders such as Swann's 3425 and 4200 models.

Down – CVI

This is a 3rd party signal type used by other companies. Swann does not support the use of this signal type.

Left – AHD

This is the AHD signal used with Swann recorders such as the 4600.

Right – TVI

This is the signal used with Swann recorders similar to the 4500, 4550, 4750 & 8075. This mode supports DVR control over the video cable.

Setting up the recorder



The camera can also use a special in-line control method called 'Coaxitron' that sends the control signals down the video signal cable. This makes the setup much easier than conventional controllable cameras, but your recorder is likely not set up to control the camera when you first receive it. You will need to activate the Coaxitron control signal to allow you to control your camera.

NB: At the moment, only the 4550, 4750 and TruSmart DVRs support the Coaxitron protocol. The camera must have the TVI signal output selected. If your recorder does not support TVI signal, then you will need to use the joystick to control the OSD.

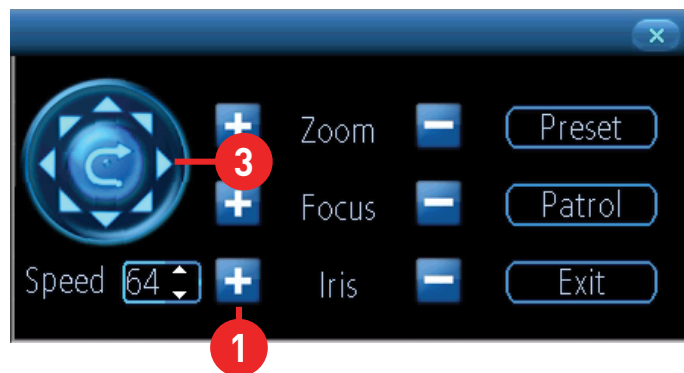
Example setup (your DVR may appear differently):

Enter the menu of your recorder and go to the Device menu. Select the PTZ tab at the top.

In the PTZ menu, first select the channel that your OSD camera is connected to. Next, select the PTZ Protocol dropdown and choose 'Pelco-C (Coaxitron)'. Apply then exit the menu.

This camera has a microphone with audio connection. Check your DVR manual to make sure that the audio recording is turned 'On' for the channel that the camera is connected to if you wish to capture audio.

Controlling the OSD menu



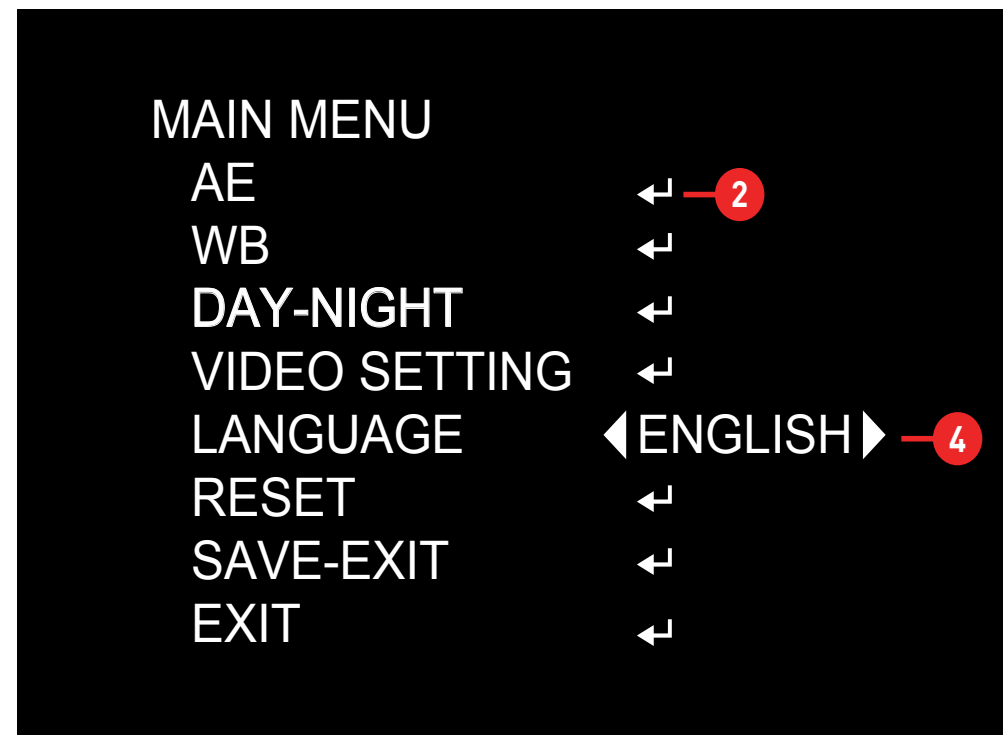
Don't forget, to access the PTZ controls, select your camera and the camera toolbar will appear (as seen below). Then, choose the PTZ button (highlighted) to open the PTZ controls to get started.



The OSD menu is controlled by the PTZ controls on your DVR (as seen above). The Iris+ button (1) on your recorder serves as the menu activate button, as well as your 'Enter' button inside the menu. You will see the CR (2) icon whenever you can use the 'Enter' (Iris+) button to access a sub-menu.

The left and right PTZ control buttons (3) are used to change the option you currently have selected, when there are arrows (4) on a menu option.

As mentioned previously, the joystick also can be used to control the menu. Don't forget that pressing in on the joystick functions as your 'En-



ter' key and the left and right movement will change options with arrows (4) on a menu option.

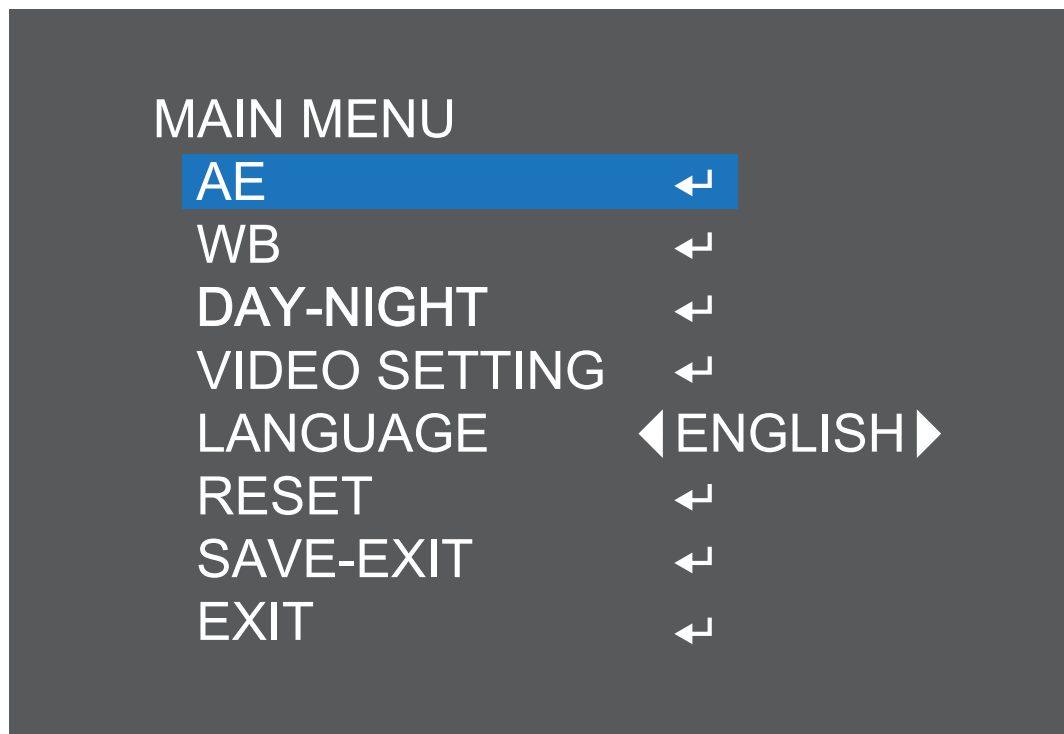
The Zoom, Focus and Speed functions have no effect when using the "FLB" or "FLD" camera as they are fixed lens.



The "ZLB" and "ZLD" camera models have an electronic zoom autofocus lens and support zoom and focus using the Coaxitron or RS-485 system depending on the type of DVR you have, use the DVR controls as shown to zoom the lens in and out and manually control focus if needed.

Main Menu

The on-screen display enables you to control the appearance and characteristics of the image shown on your camera. This is an addition to the settings that can be changed directly on the DVR. Some settings such as back light compensation and WDR can only be accessed via the on-screen display.



The blue highlight shows the currently selected option.

When accessing the on-screen display, the Main Menu will appear first. From here you can access and adjust the various settings available as needed to get the optimal image for your particular installation, some trial and testing may be needed to get the best overall image.

AE (Automatic Exposure): This menu allows you to adjust some of the settings relating to exposure,.

WB (White Balance): White balance sets the correct white color level of the camera so that colors are reproduced accurately.

Day-Night: This allows you to control the camera's switching from day

to night mode manually.

Video Setting: General image settings common to most cameras.

Language: Sets the OSD menu language.

Reset: Force the camera back to the default settings. Does not reset the settings of 'Format', 'WDR' or 'Language'. Menu flashes 3 times when selected.

Save-Exit: Save changes made to settings and exit the menu.

Exit: Exit the menu without saving changes. Any unsaved changes will be lost when the camera is powered off.

AE (Auto Exposure)



Brightness (1-20; default 4): This adjusts the direct gain of the image, making the whole scene look whiter or brighter. It is usually best to leave this as the default setting unless you have a specific requirement.

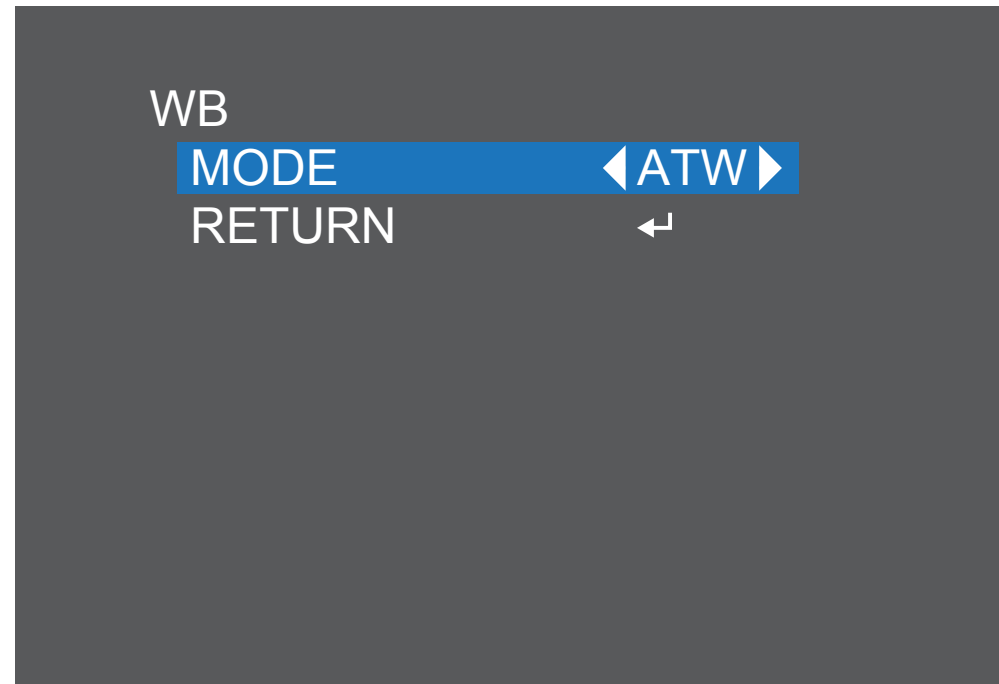
Exposure Mode (Globe, Center, BLC, FLC): This sets the exposure time to account for the amount of light present and how long the sensor should collect light before producing an image. The default setting of 'Globe' selects automatic exposure settings. Center uses automatic settings as well, but biases the center of the camera image when calculating. The BLC setting allows manual adjustment in a range. Helpful for situations where there is light in front of the camera that is placing the

subject area in shadow. FLC is similar to BLC, but for instances where the light is coming from behind the camera rather than behind the subject.

Gain (1-8; default 3): Gain is the amount of amplification on the generated signal from the sensor. Typically, this needs to be set higher the less light is available for the camera to use. Using higher gain settings will result in higher noise (static) being observed on the image, again some experimentation is needed to get the best setting.

Return: Select this to go back to the Main Menu.

WB (White Balance)

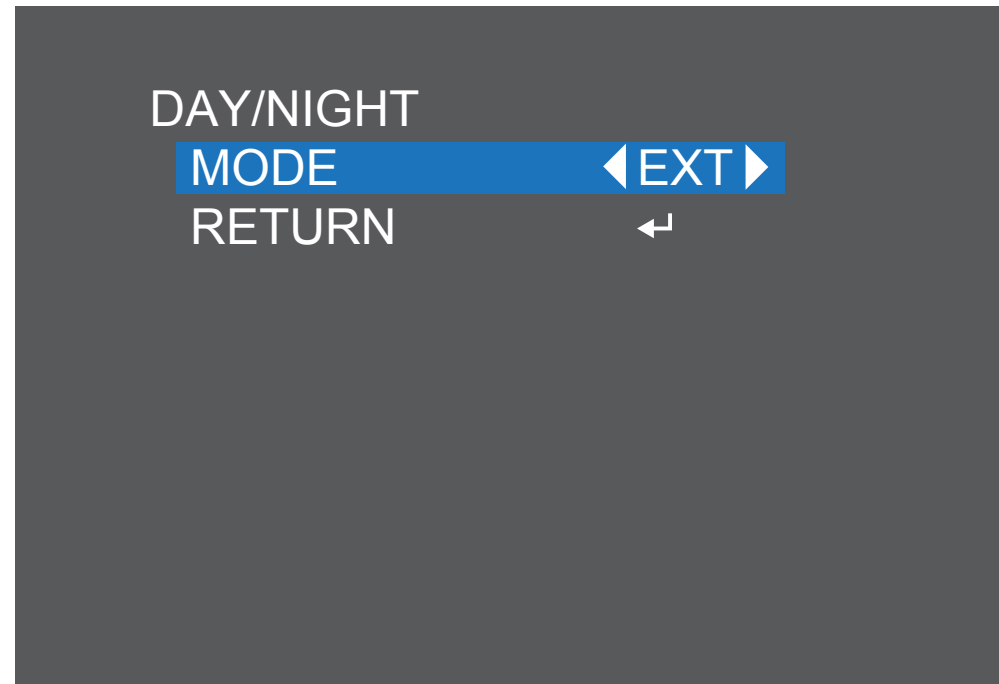


ATW (Automatic White Balance): The camera sets the White Balance according to the light it receives. We recommend you use this setting in most circumstances.

MWB (Manual White Balance): The user can then select the gain (amplification) of the red and blue channel (RGain and BGain respectively) to adjust the color of the image.

Return: Select this to go back to the Main Menu.

Day-Night



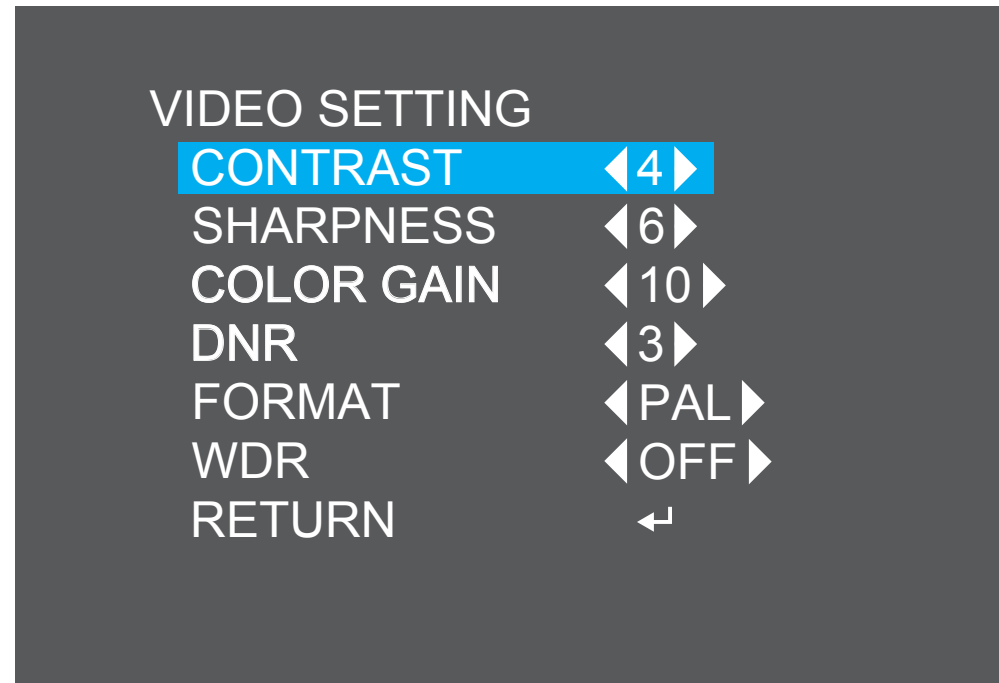
Ext & Auto: The camera determines when to switch from day to night mode, Auto is the best option as this will give you colour during the day and Black and White at night.

Colour: The camera will remain in day (colour) mode. The IR filter will stay activated and the camera will not be able to use IR light either from the camera itself or from other sources. Only visible light will be detected by the camera. Use this if there is a lot of light (such as security lights or street lights etc) at night and your camera can use them to see colour images when the sun is down.

B/W: The camera will remain in night mode. The camera will switch to black and white display and the IR filter will be deactivated. In day time when the camera is outside, the combination of visible and IR light from the sun may cause the image to be washed out.

Return: Select this to go back to the Main Menu.

Video Setting



Contrast (1-10; default 4): Contrast affects the color difference of the camera. Lower settings will make the image look more grey and blended, while higher settings will make the light and dark areas of the image more pronounced.

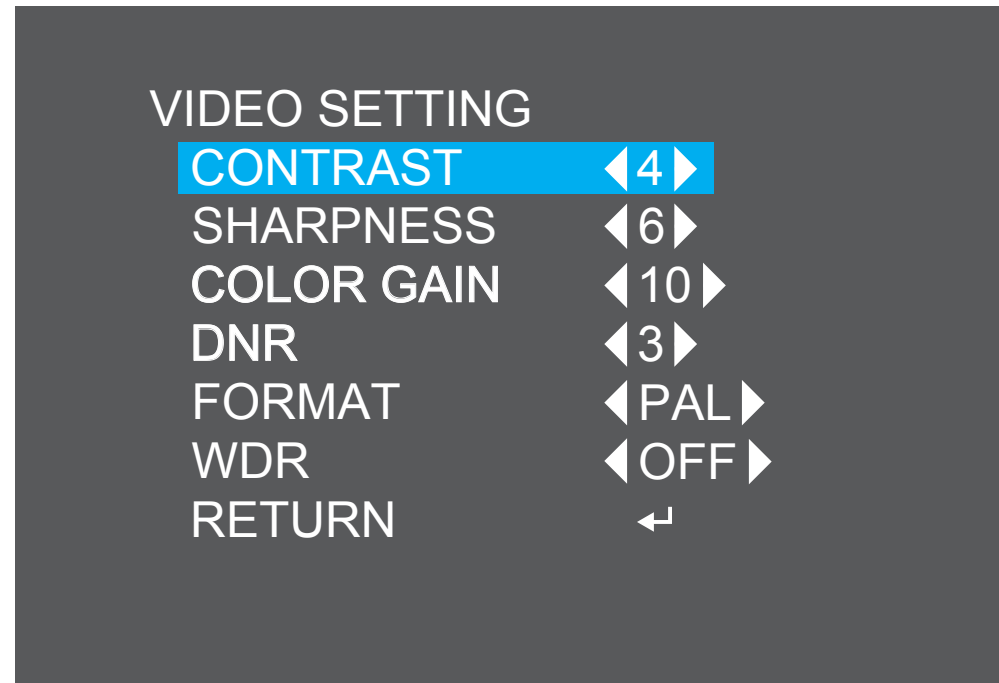
Sharpness (1-20; default 5): The clarity of detail and edges in the image. Setting the sharpness too high will make the image and especially edges look pixelated. Setting the sharpness too low will result in a soft and slightly blurry image.

Color Gain (1-20; default 9): More commonly known as 'Saturation', the amount of color amplification in the image. Higher values will make the

colour more vivid, but can result in colour bleed (where the colour is projected outward slightly from the edges of an object). Set to a value that makes the colours look "right".

DNR (1-15; default 5): Digital Noise Reduction aims to reduce the amount of noise (static) on the image resulting from the amplification of the signal. Noise is most commonly seen in low-light conditions so you should set a DNR level at night when the camera is in night mode for best results. Setting this value too high can result in reduced clarity of the image when object are moving relatively quickly through the scene.

Video Setting (cont.)



Format (PAL-NTSC): The reason for this option is mainly for indoor mounted cameras. Artificial lighting flickers slightly at the frequency of mains power which the cameras are able to see and shows on your screen as a flickering image. The correct setting here will eliminate any flicker produced by artificial lighting. For USA and Canada select NTSC, for AU, UK and most of Europe select PAL.

NB: If you are using the camera with an analog recorder (960H signal output), then you will need to be sure that you have the correct PAL or NTSC mode selected here for your region or DVR setting. Having the wrong selection can result in a poor quality black and white signal being

seen by the DVR or in some cases no signal at all.

WDR: Wide Dynamic Range causes the camera to take multiple exposures and average the result. This will reduce the impact of different light levels on the image, causing dark areas to be brighter and reducing the flaring of exceptionally bright areas. This setting may increase the amount of noise (static) on the image.

Return: Select this to go back to the Main Menu.

Note: For camera connection instructions and an explanation of the PTZ controls, please consult the camera and DVR instruction manuals available at our website.

Helpdesk & Technical Support

Technical Support E-mail: tech@swann.com

Telephone Helpdesk

USA Toll Free 1-800-627-2799

USA Parts & Warranty 1-800-627-2799

(M-F, 9am-5pm US PT)

AUSTRALIA 1800 788 210

NEW ZEALAND Toll Free 0800 479 266

UK 0808 168 9031

