

Application

Suitable for residential and light commercial folding partitions.

Panels can be either end folding or centre folding.

Panels can fold to one or both sides of the opening.

Pivot hardware enables an end folding internal partition to be designed using standard width door panels with no need to reduce the width of the panel adjacent to the jamb.

Door Specification

Track System:	Multifold 30
For Individual Panels:	
Max Panel Height	2400mm
Max Panel Weight	30kg
Max Panel Width	650mm
Min Panel Thickness	19mm

The folding unit is not hinged to a jamb, but is pivoted in the track and on the adjustable jamb bracket.
 End folding units of two, four, six or eight panels can be pivoted to each side of the opening.
 Centre folding units of one, three, five or seven full width panels and one "half" width panel can be pivoted to each side of the opening.
 A guide system across the floor must be used on end folding units of four panels or more in excess of 450mm wide or 15kg per panel.
 Instructions on panel width calculation is shown overpanel. Door panels should be constructed to provide secure fitting for the pivots, hangers, hinges and guides and can be either flush, panelled or of louvre construction.

Standard Fitting Packs and Sets

Basic packs include - top pivot assembly, bottom pivot, wall bracket, hanger(s), bumper, spanner, set of hinges, all screws and fitting instructions.

Pack No.	Contents
MF30-2PK	2 panel pack
MF30-4PK	4 panel pack
MF30-6PK	6 panel pack
MF30-APK	Add-on 2 panel pack includes - one hanger, six hinges and all screws. For each folding unit, select one MF30-2PK basic pack, sufficient MF30-APK add-on fitting packs and a suitable length of 60 track (see below) to cover the width of the opening.

Set No.	Contents
MF30-13/2	2 panel track set include - 1300mm top track, top pivot assembly, bottom pivot, wall bracket, hanger, bumper, spanner, 3 x hinges, all screws and fitting instructions.

Hardware Specification

Track	60
Material	Aluminium, Mill
Standard Lengths	2000mm, 3000mm, 4000mm and 6000mm

Bumper 60DS Rubber and steel, zinc dichromated

Top Pivot Assembly: 818 Zinc dichromated steel and nylon

Bottom Pivot: 802 Zinc dichromated steel and nylon

Floor Bracket - adjustable: 805 Zinc dichromated steel and nylon

Wall Bracket - adjustable: 806 Zinc dichromated steel and nylon

Hanger: 605 Zinc dichromated steel and nylon body
 The hanger is fitted with four nylon tyred ballrace wheels. The adjustment bolt is attached to the top plate and secured in place with a locking clip which allows easy installation.

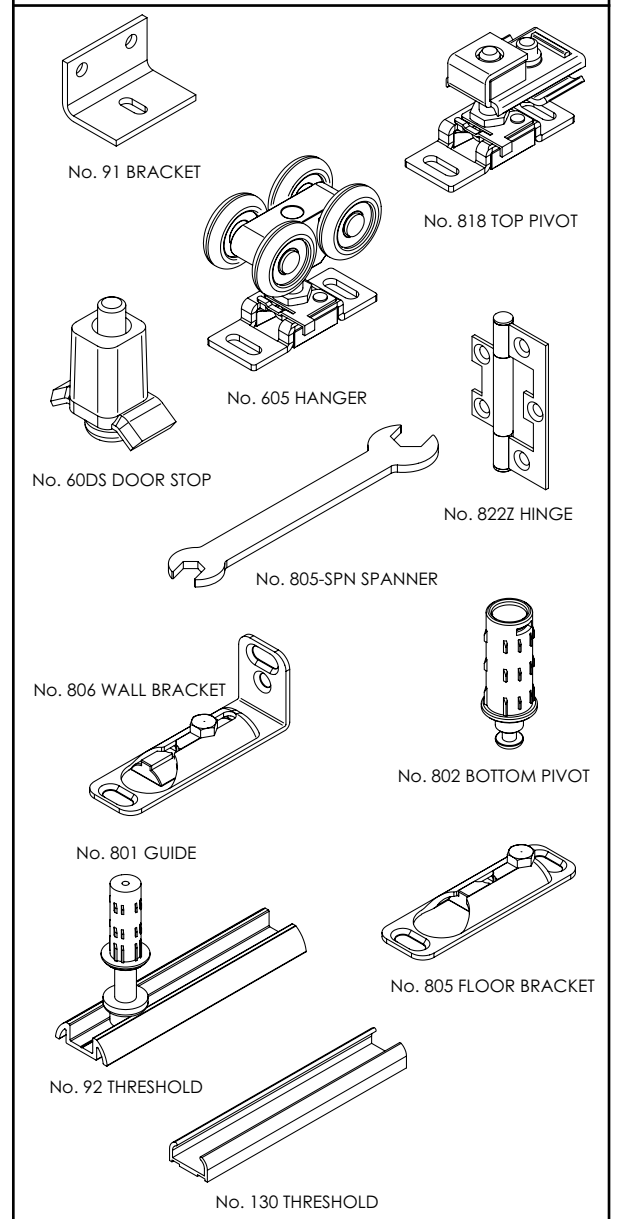
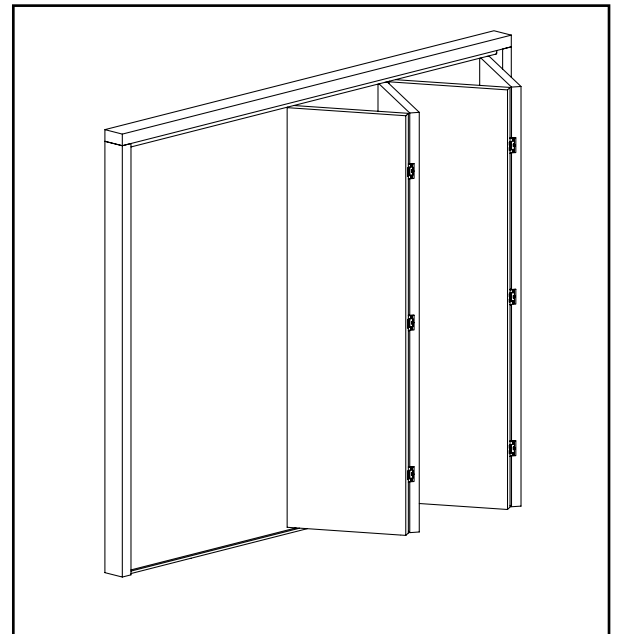
Hinges: 822Z Steel, in zinc dichromate, non mortice hinge

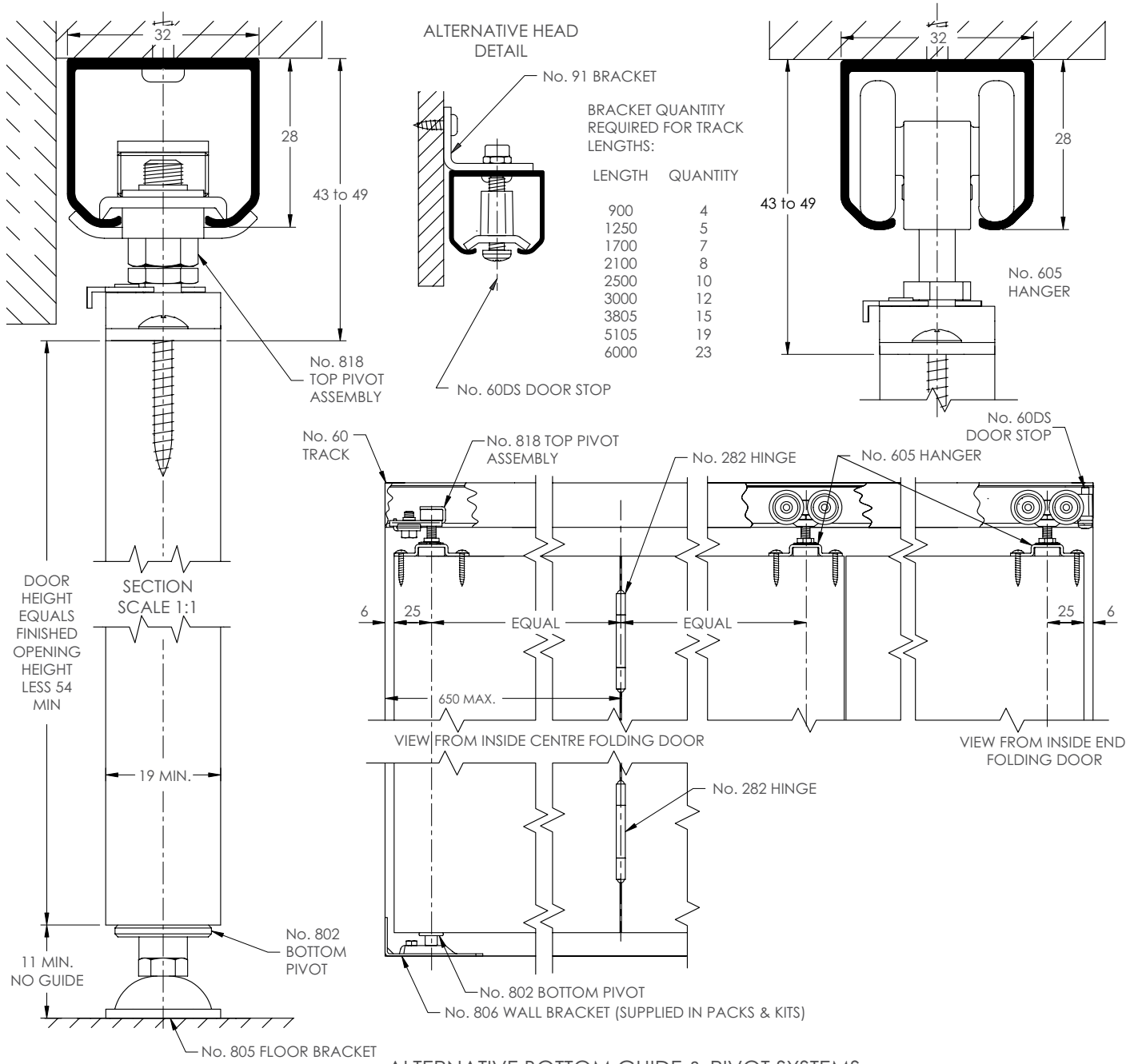
Spanner: 805-SPN Steel, in zinc dichromate finish

Bracket: 91
 Bracket made from stainless steel and supplied with matching fasteners. Available singularly or in pack of 5, reference 91/5.

Threshold and Guide: 92, 130 and 801
 92 & 130 threshold, aluminium, available in the same lengths as 60 track
 801 guide - spring loaded - in nylon and zinc dichromate steel.

Accessories:	
Flush Pull - with deep grip	401
Flush Bolt - with flat shoot	360





ALTERNATIVE BOTTOM GUIDE & PIVOT SYSTEMS

