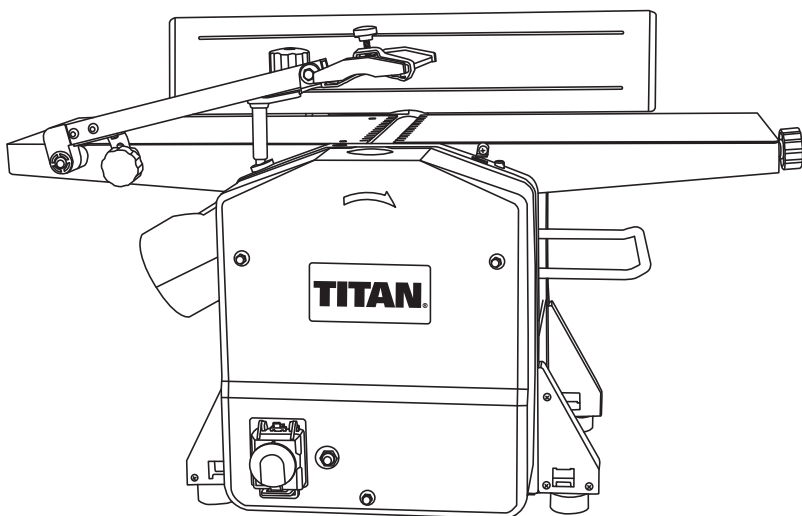


TITAN[®]

1500W Jointer Planer



TTB579PLN

Barcode: 5052931253685



WARNING! Read the instructions before using the product!

TITAN®

Congratulations on your purchase of a TITAN power tool from TITAN Power Tools (UK) Ltd. We want you to continue getting the best performance from it so this handbook includes information on safety, handling and care. Please retain this handbook in case you need to refer to any of the information in the future. Your TITAN power tool comes with a 2 year guarantee, so should it develop a fault within this period contact your retailer.

GUARANTEE



This TITAN product carries a 2 year guarantee. If your product develops a fault within this period, you should, in the first instance contact the retailer where the item was purchased.

This guarantee specifically excludes losses caused due to:

- Fair wear and tear
- Misuse or abuse
- Lack of routine maintenance
- Failure of consumable items (such as batteries)
- Accidental damage
- Cosmetic damage
- Failure to follow manufacturer's guidelines
- Loss of use of the goods

This guarantee does not affect your statutory rights. This guarantee is only valid in the UK.

1500W JOINTER PLANER

TTB342BTE

Let's get started...

These instructions are for your safety. Please read through them thoroughly before use and retain them for future reference.



Getting **started...** 03

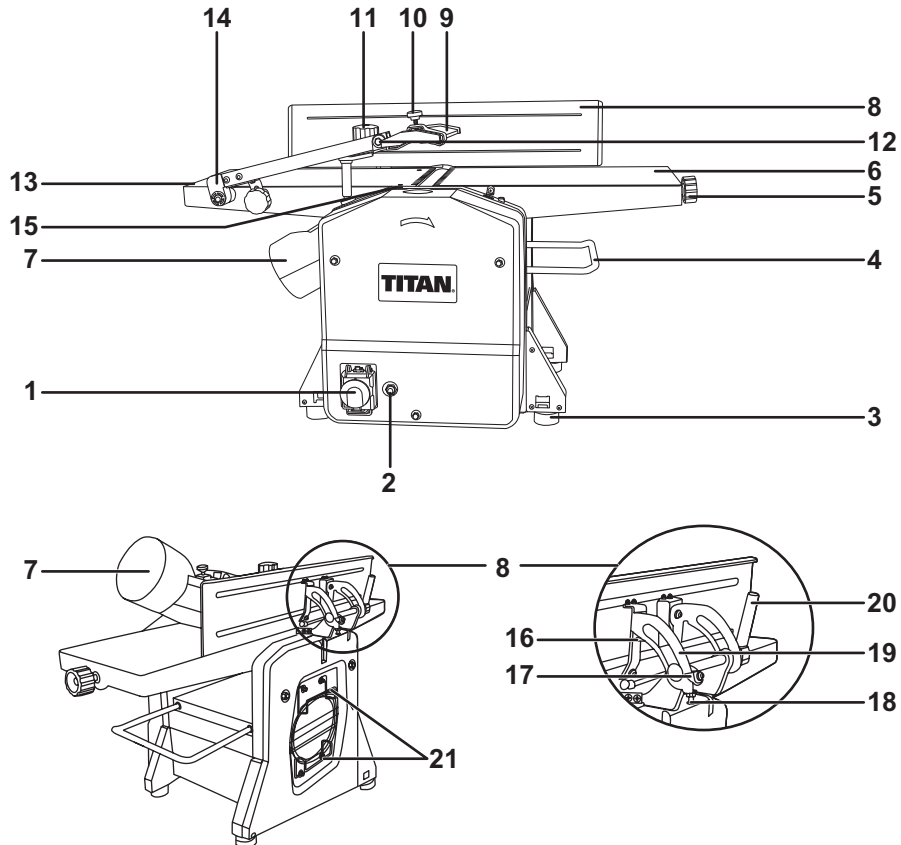
Your product	04
Technical and legal information	05
Before you start	15



In more **detail...** 19

Product functions	20
Care and maintenance	28
Trouble shooting	36
Recycling and disposal	39
EC declaration of conformity	40

Your product



- | | |
|---|--|
| 1. ON/Off switch | 12. Blade guard angle locking screw |
| 2. Motor overload switch | 13. Fixed (out-feed) table (planer mode) |
| 3. Rubber (anti vibration) foot | 14. Blade guard arm assembly |
| 4. Thicknesser extension rail | 15. Safety interlock switch |
| 5. Cut depth control knob (planer mode) | 16. 45° Fence angle stop |
| 6. Adjustable (in-feed) table (planer mode) | 17. Angle pointer |
| 7. Extraction port adapter | 18. 90° Fence angle stop |
| 8. Guide fence | 19. Angle guide |
| 9. Blade (cutter) guard | 20. Fence angle lock handle |
| 10. Blade guard locking knob | 21. Cable clips |
| 11. Height adjusting handle
(thicknesser mode) | |

Getting started....

Technical specifications

General

- > **Input Voltage** : 230-240V~50Hz
- > **Power Input** : 1500W
- > **No Load Speed** : 9000min⁻¹
- > **Max. Planing Width** : 204mm
- > **Max. Depth of Cut (Planer)** : 3mm
- > **Max. Depth to Cut (Thicknesser)** : 2mm
- > **Planing Height** : 5-120mm (Thicknesser)
- > **Feed Speed** : 6m/min (Thicknesser)
- > **Table Size** : 740x212mm (Planer)
270x204mm (Thicknesser)
- > **Net Weight** : 26.5kg

VIBRATION

The European Physical Agents (Vibration) Directive has been brought in to help reduce hand arm vibration syndrome injuries to power tool users. The directive requires power tool manufacturers and suppliers to provide indicative vibration test results to enable users to make informed decisions as to the period of time a power tool can be used safely on a daily basis and the choice of tool.

Further Advice can be found at www.hse.gov.uk


Sound level according to EN 61029	Sound pressure level L_{pA} : 92.9dB(A)
	Sound power level L_{WA} : 105.9dB(A)
	Uncertainty K_{pA} , K_{WA} : 3dB(A)
Vibration total values (triax vector sum) determined according to EN 61029:	
Work mode description 1 (if required by the relevant Part 2)	Vibration emission value $a_n = 3.0m/s^2$
	Uncertainty $K = 1.5m/s^2$

The declared vibration emission value should be used as a minimum level and should be used with the current guidance on vibration.

Calculating the actual period of the actual period off use can be difficult and the HSE website has further information.

The declared vibration emission been measured in accordance with a standardised test stated above and may be used to compare one tool with another.

The declared vibration emission value may also be used in a preliminary assessment of exposure.

 **Warning!** The vibration emission value during actual use of the power tool can differ from the declared value depending on the ways in which the tool is used dependant on the following examples and other variations on how the tool is used:

How the tool is used and the materials being cut or drilled.


The tool being in good condition and well maintained.

The use the correct accessory for the tool and ensuring it is sharp and in good condition.

The tightness of the grip on the handles.

And the tool is being used as intended by its design and these instructions.

This tool may cause hand-arm vibration syndrome if its use is not adequately managed

 **Warning!** identify safety measures to protect the operator that are based on an estimation of exposure in the actual conditions of use (taking account of all parts of the operating cycle such as the times when the tool is switched off and when it is running idle in addition to the trigger time).Note The use of other tools will reduce the users' total working period on this tool.

Helping to minimise your vibration exposure risk.

ALWAYS use sharp chisels, drills and blades.

Maintain this tool in accordance with these instructions and keep well lubricated (where appropriate)

Avoid using tools in temperatures of 10°C or less.

Plan your work schedule to spread any high vibration tool use across a number of days.

Health Surveillance

All employees should be part of an employer's health surveillance scheme to help identify any vibration related diseases at an early stage, prevent disease progression and help employees stay in work.

Important note

Remove the mains plug from socket before carrying out any adjustment or servicing.

Ensure your mains supply voltage is the same as your tool rating plate voltage.

Additional safety warning for construction dust

The updated Control of Substances Hazardous to Health Regulations 1st October 2012 now also targets to reduce the risks associated with silica, wood and gypsum dusts.

Construction workers are one of the at-risk groups within this because of the dust that they breathe: silica dust is not just a nuisance; it is a real risk to your lungs!

Silica is a natural mineral present in large amounts in things like sand, sandstone and granite. It is also commonly found in many construction materials such as concrete and mortar. The silica is broken into very fine dust (also known as Respirable Crystalline Silica or RCS) during many common tasks such as cutting, drilling and grinding. Breathing in very fine particles of crystalline silica can lead to the development of:

Lung cancer

Silicosis

Chronic Obstructive Pulmonary Disorder (Chronic obstructive pulmonary disease (COPD))

And breathing in fine particles of wood dust can lead to the development of Asthma

The risk of lung disease is linked to people who regularly breathe construction dust over a period of time, not on the odd occasion.

To protect the lung, the COSHH Regulations sets a limit on the amount of these dusts that you can breathe (called a Workplace Exposure Limit or WEL) when averaged over a normal working day. These limits are not a large amount of dust: when compared to a penny it is tiny – like a small pinch of salt:

This limit is the legal maximum; the most you can breathe after the right controls have been used.

How to reduce the amount of dust?

1. Reduce the amount of cutting by using the best sizes of building products.
2. Use a less powerful tool e.g. a block cutter instead of angle grinder.
3. Using a different method of work altogether – e.g. using a nail gun to direct fasten cable trays instead of drilling holes first.

Please always work with approved safety equipment, such as those dust masks that specially designed to filter out microscopic particles and use the dust extraction facility at all time.

For more information please see the HSE website:

<http://www.hse.gov.uk/construction> or <http://www.hse.gov.uk/pubns/cis69.pdf>

Symbols

On the product, the rating label and within these instructions you will find among others the following symbols and abbreviations.

Familiarise yourself with them to reduce hazards like personal injuries and damage to property.

V~	Volt	Hz	Hertz
W	Input power	kg	Kilogram
m/min	Metres per minute	dB(A)	Decibel (A-rated)
min ⁻¹	Per minute		
yyWxx	Manufacturing date code; year of manufacturing (20yy) and week of manufacturing (Wxx);		



Caution / Warning.



Wear hearing protection.



Read the instruction manual.



Wear eye protection.



Wear gloves.



Wear respiratory protection.



Switch the product off and disconnect it from the power supply before assembly, cleaning, adjustments, maintenance, storage and transportation.



The product complies with the applicable European directives and an evaluation method of conformity for these directives was done.



WEEE symbol. Waste electrical products should not be disposed of with household waste. Please recycle where facilities exist. Check with your Local Authority or local store for recycling advice.

Safety warnings

GENERAL SAFETY INSTRUCTIONS



WARNING! When using electric tools basic safety precautions should always be followed to reduce the risk of fire, electric shock and personal injury including the following.

Read all these instructions before attempting to operate this product and save these instructions

SAVE THESE INSTRUCTIONS**1. Keep work area clear.**

- > Cluttered areas and benches invite injuries.

2. Consider work area environment

- > Do not expose tools to rain.
- > Do not use tools in damp or wet locations.
- > Keep work area well lit.
- > Do not use tools in the presence of flammable liquids or gases.

3. Guard against electric shock

- > Avoid body contact with earthed or grounded surfaces (e.g. pipes, radiators, ranges, refrigerators).

4. Keep other persons away

- > Do not let persons, especially children, not involved in the work touch the tool or the extension cord and keep them away from the work area.

5. Store idle tools

- > When not in use, tools should be stored in a dry locked-up place, out of reach of children.

6. Do not force the tool

- > It will do the job better and safer at the rate for which it was intended.

7. Use the right tool

- > Do not force small tools to do the job of a heavy duty tool.
- > Do not use tools for purposes not intended; for example do not use circular saws to cut tree limbs or logs.

8. Dress properly

- > Do not wear loose clothing or jewellery, they can be caught in moving parts.
- > Non-skid footwear is recommended when working outdoors.
- > Wear protective hair covering to contain long hair.

9. Use protective equipment

- > Use safety glasses.
- > Use face or dust mask if working operations create dust.

10. Connect dust extraction equipment

- > If the tool is provided for the connection of dust extraction and collecting equipment, ensure these are connected and properly used.

11. Do not abuse the cord

- > Never yank the cord to disconnect it from the socket Keep the cord away from heat, oil and sharp edges.

12. Secure work

- > Where possible use damps or a vice to hold the work. It is safer than using your hand.

13. Do not overreach

- > Keep proper footing and balance at all times.

14. Maintain tools with care

- > Keep cutting tools sharp and clean for better and safer performance.
- > Follow instruction for lubricating and changing accessories.
- > Inspect tool cords periodically and if damaged have them repaired by an authorised service facility.
- > Inspect extension cords periodically and replace if damaged.
- > Keep handles dry, clean and free from oil and grease.

15. Disconnect tools

- > When not in use, before servicing and when changing accessories such as blades, bits and cutters, disconnect tools from the power supply.

16. Remove adjusting keys and wrenches

- > Form the habit of checking to see that keys and adjusting wrenches are removed from the tool before turning it on.

17. Avoid unintentional starting

- > Ensure switch is in "off" position when plugging in.

18. Use outdoor extension leads

- > When the tool is used outdoors, use only extension cords intended for outdoor use and so marked.

19. Stay alert

- > Watch what you are doing, use common sense and do not operate the tool when you are tired.

20. Check damaged parts

- > Before further use of tool, it should be carefully checked to determine that it will operate properly and perform its intended function.
- > Check for alignment of moving parts, binding of moving parts, breakage of parts, mounting and any other conditions that may affect its operation.
- > A guard or other part that is damaged should be properly repaired or replaced by an authorised service centre unless otherwise indicated in this instruction manual.
- > Have defective switches replaced by an authorised service centre.
- > Do not use the tool if the switch does not turn it on and off.

21. Warning

- > The use of any accessory or attachment other than one recommended in this instruction manual may present a risk of personal injury.

22. Have your tool repaired by a qualified person

- > This electric tool complies with the relevant safety rules. Repairs should only be carried out by qualified persons using original spare parts, otherwise this may result in considerable danger to the user.

23. If the replacement of the supply cord is necessary, this has to be done

by the manufacturer or his agent in order to avoid a safety hazard.

24. For tools intended to be connected to a water supply

- > For tools provided with a PRCD: Never use the tool without the PRCD delivered with the tool,
- > For tools provided with an isolating transformer: Never use the tool without the transformer delivered with the tool or of the type as specified in these instructions.
- > Replacement of the plug or the supply cord shall always be carried out by the manufacturer of the tool or his service organisation,
- > Keep water clear off the electrical parts of the tool and away from persons in the working area.

HEALTH ADVICE



Warning! When drilling, sanding, sawing or grinding, dust particles will be produced. In some instances, depending on the materials you are working with, this dust can be particularly harmful to you (e.g. lead from old gloss paint). You are advised to consider the risks associated with the materials you are working with and to reduce the risk of exposure. You should:

- Work in a well-ventilated area.
- Work with approved safety equipment, such as those dust masks that are specially designed to filter microscopic particles.

SPECIFIC SAFETY INSTRUCTIONS




Caution! If used incorrectly, woodworking machines can be dangerous, for this reason always comply with the safety instructions mentioned in this manual.

- > Never work without the protective equipment prescribed for the relevant operation and do not make any modifications to the machine that could undermine safety.
- > Children and young persons must not operate this machine. This rule does not apply to young persons over the age of 16 being trained and supervised by an expert.
- > Prior to all work, make sure that the safety and operating equipment is securely attached. Any parts, if damaged must be repaired correctly or replaced.
- > Set up the machine on a firm flat surface so that the table is horizontal and the machine cannot tip over.
- > Never work with pieces which are too big or too small for the machine's capacity.
- > Before planing, examine the workpiece for metal objects and stones and remove them if necessary.


- > When planing, make sure that the portion of the cutter head not being used is covered by the cutter guard.
- > When planing thin pieces of timber, suitable devices must be used to ensure that these small pieces are properly positioned and guided.
- > The anti-kickback device of the planer must be checked regularly to ensure that it remains in proper working condition. All pawls of this device must move freely and must drop down by their own weight when lifted. The point of these pawls must be kept sharp.
- > Do not begin planing until the cutter head has reached full speed.
- > When planing, take up a working position so that you are always on one side of the machine away from the area directly in front of or behind the cutter head.
- > Always keep your hands well away from the cutter head or the chip ejection area while the machine is running.
- > A uniform feed rate when planing increases the life of the cutting blades and reduces the risk of accidents.
- > The planing blades must be sharpened or replaced in good time as blunt knives do not only increase the risk of kickback, but also impose an unnecessary load on the motor.
- > The sawdust created by planing can make it difficult to see as clearly as necessary and can impair the operator's health in certain circumstances.
- > If not working outdoors or in a well ventilated area, the machine should ideally be connected to an extractor unit with an air velocity of at least 20 m/s (65.6 ft/sec.).
- > The sound pressure level at the workplace generally exceeds 85 dB (A), Users should therefore wear ear protectors.
- > Any repairs to the planer thicknesser must be carried out only by a suitably qualified person.
- > Only original spare parts and accessories must be used, Otherwise the manufacturer does not offer any warranty and does not accept any liability for personal injury.
- > Regular cleaning of the machine is an important safety factor, before beginning this task always ensure the planer is turned off and that the plug is removed from the mains supply.

ADDITIONAL SAFETY INSTRUCTIONS FOR JOINTER PLANER

 **WARNING!** Before connecting the tool to the mains supply be sure that the voltage supply is the same as that specified on the nameplate of the tool. A power source with a voltage greater or lower than that specified for the tool can result in serious injury to the user, as well as damage to the tool. If in doubt, do not plug the tool into the mains supply. Always turn the machine off and remove the plug from the mains socket before making any adjustments or

maintenance, including changing the blades.

- > When an extension cable is required, you must ensure that it has the right ampere rating and a large enough cross section for the planer thicknesser, it should also be checked to make sure that no damage is present and it is in safe electrical condition.
- > Ensure that you have removed foreign objects such as nails and screws front the work before commencing.
- > Rags, cloths, cord, string and anything that could get “dragged” into the cutter block should be removed from the work area prior to use.
- > Damaged or contaminated work pieces may cause unwanted hazards. Metal parts penetrated into the workpiece can be very dangerous, and should be removed before operation starts.
- > Use safety equipment including safety goggles or shield, ear protection, dust mask and protective clothing.
- > Check to make sure that all fixing screws are tight before operating the tool.
- > Ensure that the dust extractor is in place before commencing operation.
- > Do not force the workpiece through the machine, let the machine apply the correct automatic feed rate.
- > Keep the feed rollers free of wood chips and sawdust, if the movement becomes clogged, kickback can occur.
- > The machine is designed for the planing of wood only. Never to cut recesses, tenons or moulds.
- > Do not use the machine for planing wood with numerous knots or loose knots.
- > Do not stand directly in front of the machine during operation, stand to one side.
- > Check that the blades are fitted correctly before commencing operation.
- > Take care when handling blades and the cutter head. Wear work gloves, The blades are sharp and can easily cut bare hands.
- > Allow the machine to reach full speed before feeding in a workpiece.
- > Check that the cutters are securely fastened.
- > Check the amount of cut on the blade before feeding in a workpiece.
- > Check that the cutters are securely fastened.
- > Check the amount of cut on the blade before using the machine.
- > Never attempt a heavy cut in short stock.
- > Avoid cutting across the grain.
- > Use the push pads to keep your hands well away from the blades, particularly for shorter stick planing. Do not attempt to feed work pieces that are shorter than the minimum length specified in the technical data of the tool.
- > Advance the material to the cutting head for normal operation by sliding it along the table, never by placing it directly on the cutting head.

- > Never leave the machine set to a heavy cut, always reduce it to a minimum cut.
- > Use cutting blades designed for this machine only.
- > Rectify the faults including guards and cutter block immediately as they are discovered.
- > The machine is equipped with an interlock switch. It only works after the dust extractor is mounted and the switch is closed. Make sure you have already mounted the whole machine otherwise it does not work.
- >  **CAUTION:** Always mount the dust extractor to the machine for the machine safety.

Unpack

- > Unpack all parts and lay them on a flat, stable surface.
- > Remove all packing materials and shipping devices if applicable.
- > Make sure the delivery contents are complete and free of any damage. If you find that parts are missing or show damage do not use the product but contact your dealer. Using an incomplete or damaged product represents a hazard to people and property.
- > Ensure that you have all the accessories and tools needed for assembly and operation. This also includes suitable personal protective equipment.

You will need

(items not supplied)

- > Suitable personal protective equipment
- > Phillips screwdriver
- > Sharp-nose pliers
- > Combination square

(items supplied)

- > 3mm, 5mm, 6mm Hex key (3pcs)
- > 8 x 10mm Spanner (1 pc)
- > Blade setting block (1 pc)



WARNING! Do not connect to power supply until assembly is complete. Failure to comply could result in accidental starting and possible serious injury.

Fitting the rubber (anti-vibration) feet

- > Carefully turn the machine upside down, taking care not to damage the in-feed / out-feed beds.
- > Fit the washers M8 (22) over the hex bolts M8 x 20mm (23) and push both through the holes in the rubber feet (3).
- > Fit the feet / bolts to the holes provided (1 on each corner of the machine).
- > Secure using the 6mm hex key supplied.

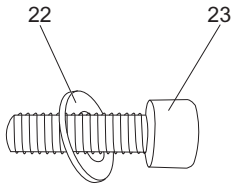


Fig. 1

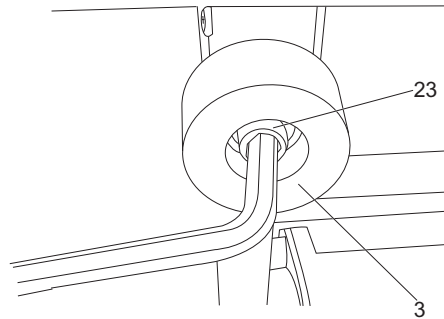


Fig. 2

Fitting the guide fence

- > Locate the 2 x guide fence mounting holes situated on the side of the planning out-feed table (13). (Fig. 3)
- > Then place the safety guard plate (24). (Fig. 4)

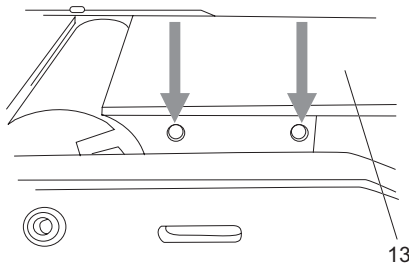


Fig. 3

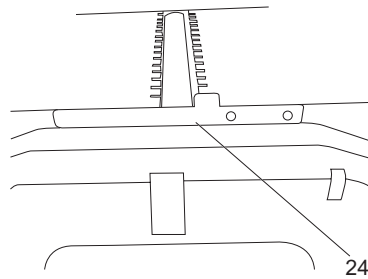


Fig. 4

- > Line up the 2 x mounting holes on the guide fence (8) with those situated on the out-feed table.
- > Fit a spring washer M6 (25) and a hex head screws M6 x 25mm (26) through both sets of holes and tighten with the 5mm hex key to secure. (Fig 5 & 6)



NOTE: Do not over-tighten the screws as this will cause un-wanted damage to the aluminium outfeed table. Just tighten until the fence is secured.

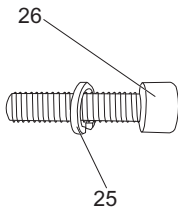


Fig. 5

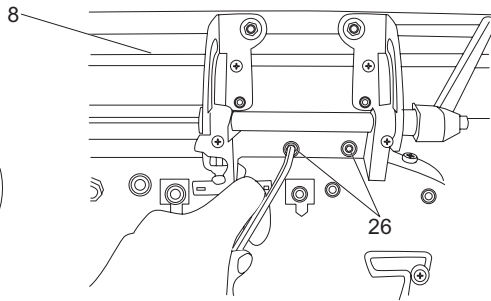


Fig. 6

Fitting the blade (cutter) guard

- > Familiarise yourself with the blade guard locating pivot pin (a), the groove (b) and the blade guard limiting knob pole (c) situated on the side of the planer out-feed table (13). (Fig. 7)
- > Slide the guard arm and cutter guard assembly (27) over the locating pivot pin. (Fig. 8)

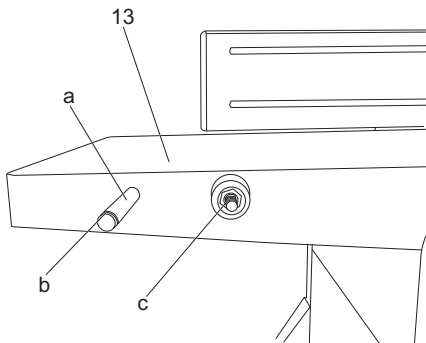


Fig. 7

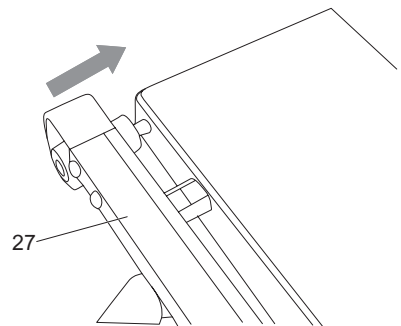


Fig. 8

- > Tighten the locking knob (28) clockwise. (Fig. 9)
- > Align the opening of the retaining collar (29) with the sharp-nose pliers (not supplied) to the groove (b) on the blade guard locating pivot pin (a), then push down the retaining collar (29), and secure it to the groove (b). (Fig. 10)

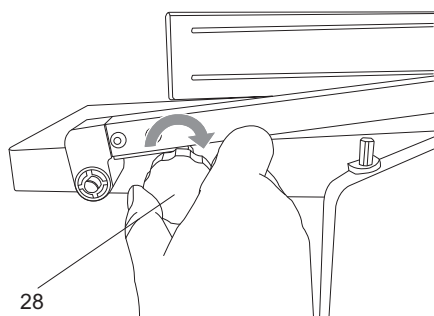


Fig. 9

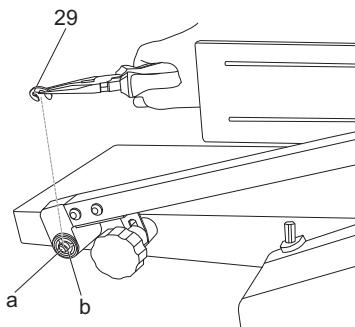


Fig. 10

Fitting the height adjusting handle

> Fit the height adjusting handle (11) over its shaft. (Fig. 11)

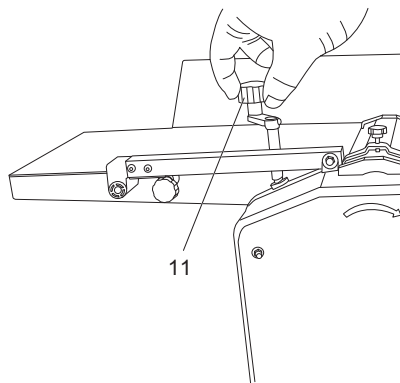


Fig. 11

In more detail...



Product functions	20
Care and maintenance	28
Trouble shooting	36
Recycling and disposal	39
EC declaration of conformity	40



Important: This 1500W jointer planer is intended specifically for planing and thickening operations on solid timber. When being thickened, the contact surface of the work piece must be flat.

If working with bigger or heavier work-pieces it is necessary to clamp the machine firmly to its supporting bench or table. The machine is not suitable for operation outdoors when raining or in any damp environment. Any other use beyond this scope is considered as failing to comply with the machines intended purpose. The manufacturer is not liable for any damage or injuries caused as a result of this; the risk is borne solely by the user.

The ON / OFF switch (1) of machine is located on the left side below the yellow cover. To switch the machine on: Lift the yellow cover and press the green button "1".

To switch the machine off: Press the red button "0" or firmly close the cover.

The switch can be locked to prevent the machine from being inadvertently switched on by folding down the yellow cover.

This machine is equipped with an overload switch (2) for motor running protection. Once the overload occurs, the machine will stop automatically. After a while, the overload switch can be reset.



Warning: Operation of any power tool can result in foreign objects being thrown into the eyes which can result in severe eye injury.

Always wear safety goggles, it is also advisable to wear ear protection particularly if using the planer for extended periods.

For your own safety, read all of the safety instructions in this manual and adhere to all precautions before and during operation of the planer thicknesser.

Before each use:

- Make sure all moving parts are free from interference.
- Make sure blades are aligned and correctly attached to cutter-head (See maintenance section of this manual).
- Do not plug in the jointer planer unless the switch is in "off" position.
- After turning the switch on, allow the cutter block to come to full speed before commencing the operation.
- Keep hands clear of all moving parts.
- Do not force the cut. Slowing or stalling the cutter will force the overload to cut in and will greatly reduce the life of the motor.
- Use quality dry timber. Blades last longer and cuts are smoother with good quality wood.
- Do not pull the workpiece back over the cutter block towards the infeed table.
- Support the work-piece adequately at all times during operation; maintain control of the workpiece.

- Take precautions against kickback, do not permit anyone to stand or cross in the line of cutterhead's rotation. Kickback or thrown debris will travel in this direction.
- Replace or sharpen blades as they become damaged or dull.
- Whenever possible always use the push blocks supplied to feed work across the cutter head.

Planing mode:

1) Setting the guide fence

- > Turn the fence angle locking handle (20) anticlockwise to loosen. (Fig. 12)
- > Use the angle guide (19) and the angle pointer to set the fence at the desired angle. (Fig. 12)
- > Re-tighten the locking handle (20) to secure the fence guide (8). (Fig. 13)



NOTE: There are positive stops at 45° and 90° this is to make it easier to set the fence at these 2 popular angles.

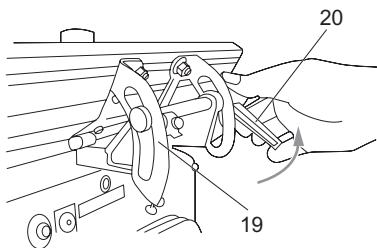


Fig. 12

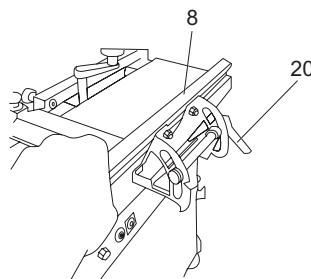


Fig. 13

2) Fitting the extraction port

The dust extraction port (30) is also one of the safety devices of the planer thicknesser. Once fitted correctly, the extraction port covers the underside of the cutter-block and engages one of the safety interlock switches, which allows the machine to run safely.

- > Turn the height adjusting handle (11) anti-clockwise, this will lower the thicknessing table. (Fig. 14)

- > Continue turning the handle until the thicknesser table reaches its lowest point.
- > On the bottom of the thicknesser table there are 3 holes, these are the locating holes for the corresponding locating points on the extraction port assembly. (Fig. 15)
- > Make note of "tab d" as this is the point that engages the interlock switch (31) and allows the planer thicknesser to run safely. (Fig. 16 & 17)
- > Take care to ensure that this "tab" is located correctly whilst fitting the dust extraction port.
- > Hold the dust extraction port (30) assembly at approximately 45° and slide it into place onto the thicknesser bed. (Fig. 18)
- > Loosen the nut (32) with 10mm spanner supplied, then remove it and the flat washer M8 (33). (Fig. 16)
- > Ensure that the 3 locating points line up with the corresponding holes on the thicknesser bed and set the port flat against the bed.
- > Secure the extraction port by fitting the flat washer M8 (33) and the nut (32) onto the middle (threaded) locating point, then tighten the nut (32).
- > Turn the height adjusting handle (11) clockwise to raise the thicknesser bed. This will secure the extraction port in place as well as engaging the safety interlock switch.



Caution: Do not secure the extraction port too tightly. If too much force is applied to the height adjusting handle the extraction port will go beyond its optimum position, the safety interlock switch will disengage and the motor will not run.

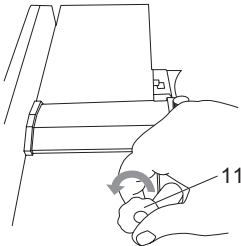


Fig. 14

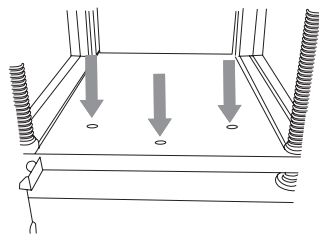


Fig. 15

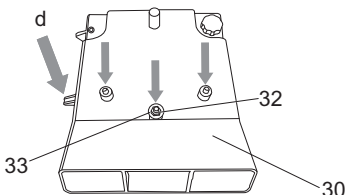


Fig. 16

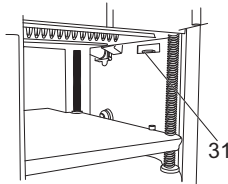


Fig. 17

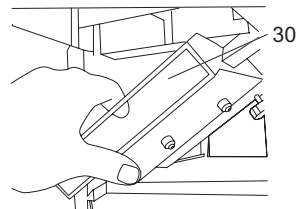


Fig. 18

- > Once fitted correctly, the extraction port should look as in Fig 19.
- > Finally, fit the extraction port adapter (7) by simply sliding it over the extraction port as in Fig 20.

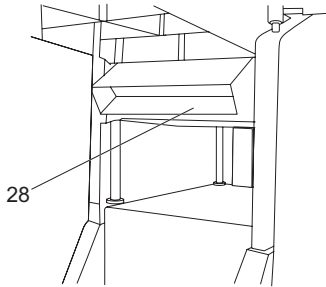


Fig. 19

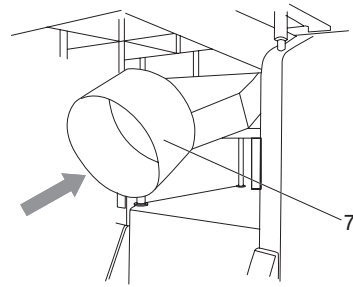


Fig. 20

3) Setting the blade guard

- > Loosen the blade guard locking knob (10).
- > Pull back the blade guard (9).
- > Set the workpiece against the guide fence (8).
- > Slide the blade guard (9) towards the workpiece (leaving a small gap of a few millimetres).
- > Re-tighten the blade guard locking knob (10) to secure.



Caution: When the machine is not in use the plug should be removed from the mains socket and the blade guard (9) should be set so that it covers the whole of the cutter assembly so as to reduce the risk of injury.

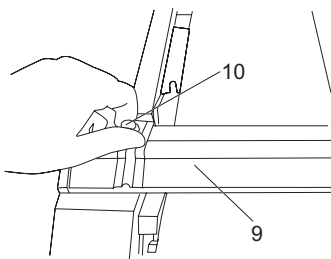


Fig. 21

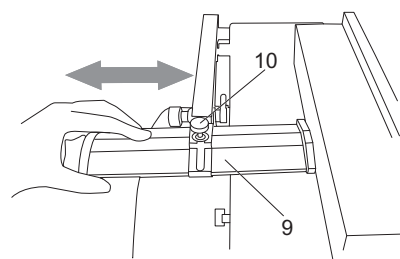


Fig. 22

4) Setting the depth of cut

The depth of cut is the amount of material removed from the workpiece with a single pass over the cutter-block. It is set by the in-feed table moving up / down in relation to the out-feed table (this is fixed).



NOTE: The maximum cut of 3mm should only be utilised on softer woods. The planer thicknesser will give a much better quality finish on harder woods such as oak if less material is removed on each pass.

- > Turn the cut depth control knob (5) clockwise to reduce the depth of cut and anti-clockwise to increase the depth of cut.
- > The scale to the left of the in-feed table shows the amount of material that will be removed per pass.
- > 1 relates to approximately 1mm, 2 relates to approximately 2mm etc.

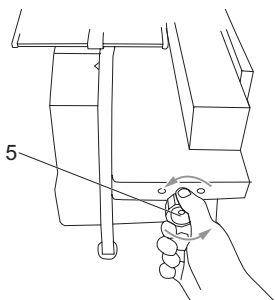


Fig. 23

5) Making a pass with the workpiece

Once everything is set as needed the planer thicknesser can now be safely operated.

- > Ensure that the cutter block is free from foreign objects (including the workpiece to be planed).
- > Connect the planer thicknesser to the mains supply.
- > Turn the planer on with the green "1" button.
- > Allow the planer to reach its maximum speed.
- > Place the workpiece onto the in-feed table and ensure that the workpiece stays

parallel with the in-feed table for the whole pass.

> Slowly push the workpiece forward (over the cutter-block).

⚠ Caution: It is much safer (particularly when using a thin / small workpiece) to use the supplied push blocks (34).

> Repeat these steps until the correct amount of material has been removed.



NOTE: Keep firm and even pressure on the workpiece as it passes over the in-feed table and continue pushing forward until the back of the workpiece passes the cutter-block.

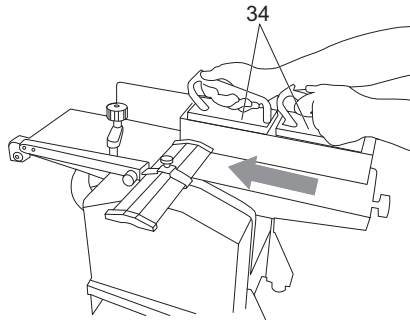


Fig. 24

Thicknesser mode:

1) Setting the blade guard

> Loosen the blade guard locking knob (10) (turn clockwise). (Fig. 25)

> Slide the blade guard (9) out as far as it will go. (Fig. 26)

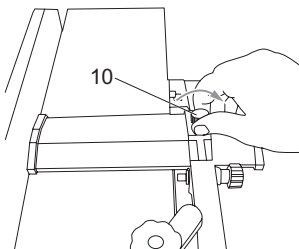


Fig. 25

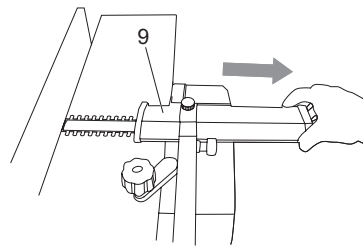


Fig. 26

2) Fitting the extraction port

There are 2 holes on the out-feed table of the planer, 1 x un-threaded hole (e) for locating the extraction port, and 1 x threaded hole (f) for securing the extraction port as shown in Fig. 27.

These holes work in conjunction with the fixings on the extraction port.

- > Insert the locating screw (g) on the extractor port into the locating pin hole (e) on the out-feed table, then tighten the hexagon screw (35) with 5mm hex key.
- > Insert the locating screw (h) on the extractor port into the location pin hole (f) on the out-feed table, then tighten the locking knob (36).
- > Ensure tab (i) sits over the machines 2nd interlock safety switch (37). You will hear the switch click as the securing screw is tightened.
- > Slide the extraction port adapter (7) over the extractor port. (Fig. 30)

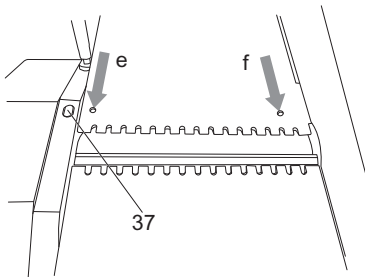


Fig. 27

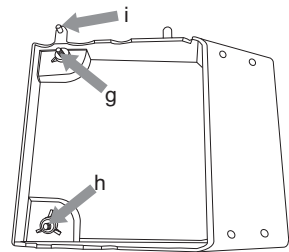


Fig. 28

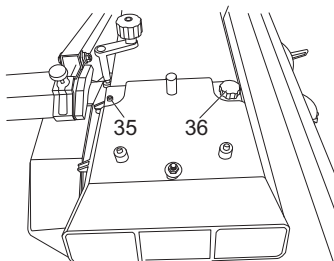


Fig. 29

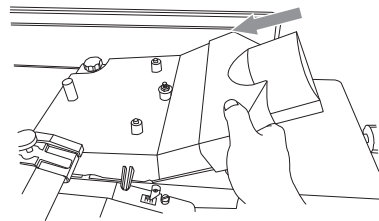


Fig. 30

3) Setting the depth of cut

The depth of cut is set by how high / low the thickening bed is in relation to the cutter-block.

- > Measure the workpiece.
- > Set the bed to just over this measurement, using the scale to the left of the in-feed table.
- > Turn the height adjusting handle anticlockwise to lower the thickening bed, clockwise to raise it.
- > Ensure that the cutter block is free from foreign objects (including the workpiece to be thickened).
- > Connect the planer thickener to the mains supply.
- > Turn the thickener on with the green "1" button.
- > Allow the planer to reach its maximum speed.
- > Place the workpiece onto the in-feed table.
- > Turn the height adjustment handle (11) half a turn clockwise to raise the bed.
- > Continue this process until the workpiece comes into contact with the thickener drive rollers.
- > Once the workpiece comes into contact with the rollers they will automatically "pull" it through the machine and over the cutterblock.
- > Continue this process until the workpiece is at the desired thickness.



NOTE: A longer workpiece should be supported after it leaves the machine to ensure a good even finish.

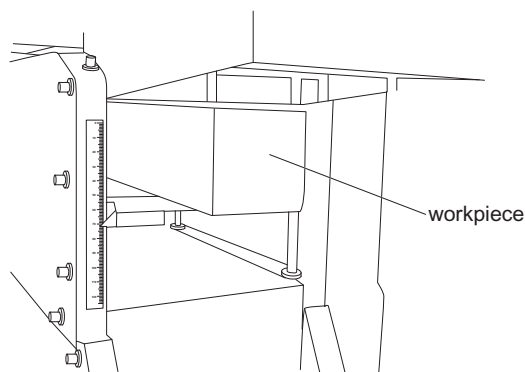


Fig. 31

The golden rules for care



Caution: Always ensure that the machine is turned off and that the plug is removed from the mains supply before carrying out any repairs or maintenance.

- > Keep the product clean. Remove debris from it after each use and before storage.
- > Regular and proper cleaning will help ensure safe use and prolong the life of the product.
- > Inspect the product before each use for worn and damaged parts. Do not operate it if you find broken and worn parts.



WARNING! Only perform repairs and maintenance work according to these instructions! All further works must be performed by a qualified specialist!

Before each use

- > Check for damaged parts and repair or replace them as necessary.
- > Ensure all nuts and bolts etc are secure.
- > Ensure that all moving parts move freely and are not binding prior to starting the machine.
- > Remove adjusting keys and wrenches and check to see that keys and adjusting wrenches are removed from the tool before turning it on.

During use

- > Constantly check for abnormalities. Stop the operation immediately if something does not look or sound right and have the machine checked by a suitably qualified person.
- > Remove any buildup of chippings and pay particular attention around the base of the planer thicknesser, as buildup there will prevent the cooling air from reaching the motor.

After each use

- > Remove the extraction port and clean out all chippings etc. Dry air would be good for this operation but a soft brush would also work.

! **Caution:** Always wear a dust mask and eye protection when using dry air.

- > Remove all chippings etc from the planer thicknesser.
- > Remove all chippings etc from around the air inlets of the motor. If these become blocked the motor will become too hot and its service life will be greatly reduce.
- > Wrap the mains lead carefully around the cable clips. This will reduce the risk of tripping and / or damage to the cable.

After 10 hours running

- > Lubricate the bush bearings.
- > Treat the threaded spindles for height adjustment of the thicknessing table with dry lubricant.

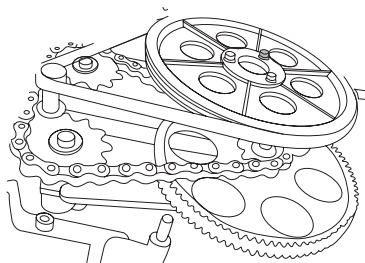


Fig. 32

Periodically

Over time resin or other contaminates may build up on the planer in-feed and out-feed tables, as well as the thicknesser table and the in-feed and out-feed rollers.

- > To ensure easy steady feeding the beds and the rollers will need to be cleaned periodically.
- > Periodically check that the anti-kickback fingers (38) move freely (they should fall back under their own weight).
- > Check that the points of the anti-kickback fingers (38) are not rounded.

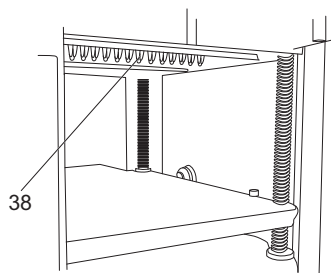


Fig. 33

Setting the positive stops on the guide fence

The positive stops at 90° and 45° are set at the factory to ensure accuracy, however over time they may need to be reset.

- > Loosen the fence angle lock handle (20).
- > Sit a 90° square firmly on the planer table.
- > Set the guide fence against the square, this will give an angle of 90° between the bed and the fence.
- > Loosen the lock nut (j).
- > Tighten / loosen the angle locking bolt until it sits against the angle stop on the angle guide (19), whilst ensuring that the 90° angle is kept.
- > Re-tighten the lock nut to hold the bolt securely in place.
- > Loosen the angle pointer screw (k) and set the angle pointer so that it reads 90°.
- > To set the 45° positive stop, set the guide fence so that the angle pointer is at 45°.
- > Loosen the 45° lock nut (l).
- > Tighten / loosen the angle locking bolt until it sits against the 45° stop on the angle guide.
- > Re-tighten the locking nut to secure.

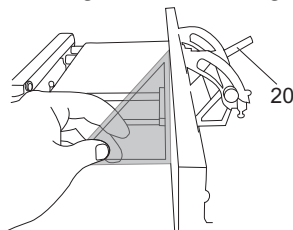


Fig. 34

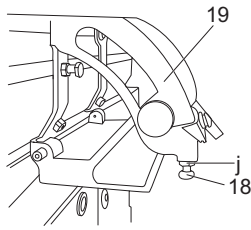


Fig. 35

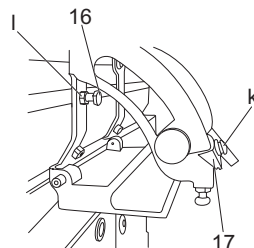


Fig. 36

Replacing the cutter blades:

1) Removing the blade



Caution: Not to touch the tips of the blades as it would cause hurts to you.

- > Remove the guide fence.
- > Loosen the blade guard locking knob anticlockwise, then slide the blade guard away from the cutterblock as far as it will go.
- > Turn the cutter-block so that one of the blades is exposed in the gap between the in-feed (6) and out-feed (13) tables.
- > Turn the five blade tensioning screws (39) anticlockwise with 10mm spanner to loosen. (Fig. 37)
- > Once all five screws have been loosened, the blade complete with the blade clamping device can be easily removed. (Fig. 38)



NOTE: Remember the correct orientation of the blade to ensure that the new one can be fitted correctly.



Caution: Take care not to lose the blade tensioning springs from the cutter-block after the blade assembly has been removed.

- > Whilst removed, all parts (including the cutterblock) should be thoroughly cleaned.

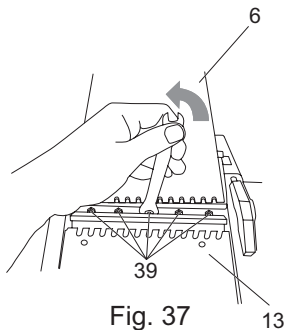


Fig. 37

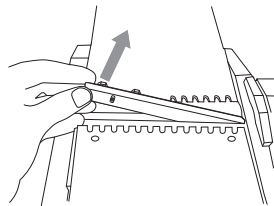


Fig. 38

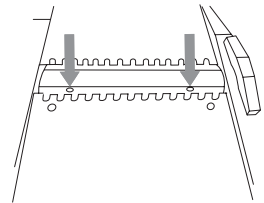


Fig. 39

2) Fitting the blades

- > Fit the blade correctly into the clamping device.
- > Slide both components into the cutter-block, taking care that they are fitted in the correct direction etc.
- > Centre the blade assembly laterally.
- > Set the blade setting block (40) over the cutterblock.
- > Pull the setting block back so that it sits firmly against the front edge of the planing out-feed table.
- > Put firm downward pressure on the setting block whilst keeping it firmly against the edge of the out-feed table. This will push the blade into place.
- > Keep firm pressure on the setting block and tighten the 5 blade tensioning screws.
- > Once complete, turn the cutter-block to expose the 2nd blade and repeat the process to replace that blade.



NOTE: Once this operation is complete, ensure that the cutter-block turns freely by hand before re-connecting the machine to the mains supply. Replace all safety guards immediately after completing this operation.

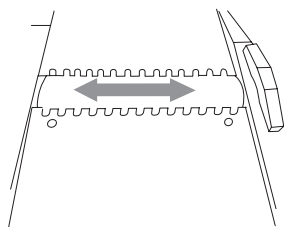


Fig. 40

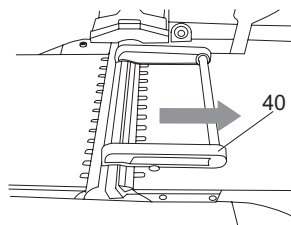


Fig. 41

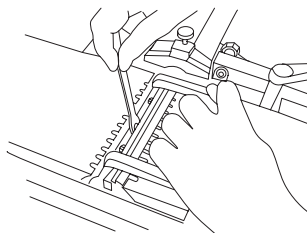


Fig. 42

In more detail...

Replacing the motor brushes



Caution: This operation should only be carried out by a suitably qualified person.

- > Carefully turn the planer thicknesser onto its side.
- > This will expose the motor of the machine.
- > Take a slotted screwdriver (not supplied) and locate it in the slot on the motor brush cap.

- > Turn the screwdriver anti-clockwise until the cap can be removed and take care when removing the cap as there is a spring under compression holding the brush in place.
- > Remove the brush and check the length; If the brush needs changing fit the new brush and tighten the cap to retain it.

If the brush is not worn but is sticking inside the holder there may be carbon buildup that needs to be removed. The best way to remove the carbon is by blowing dry air into the holder, but a small stiff brush or pipe cleaner could be used to do the same job. The brush will also need cleaning as some of the buildup may be stuck to it.



Caution: When removing or cleaning the brushes eye protection and a dust mask should be worn; particularly if using dry air. Clean or change the brushes in a well ventilated area and ensure everyone in that area also wear the appropriate protection.

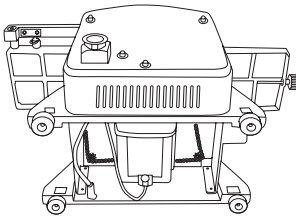


Fig. 43

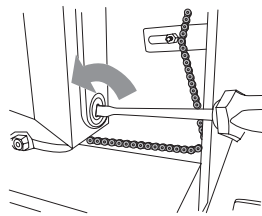


Fig. 44

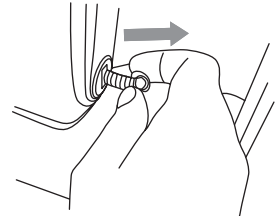


Fig. 45

Power cord

- > If the power cord is damaged, it must be replaced by the manufacturer, its service agent or similarly qualified person in order to avoid a safety hazard.

Plug replacement

If you need to replace the fitted plug then follow the instructions below.

Important

The wires in the mains lead are coloured in accordance with the following code:

Green & yellow - Earth

Blue - Neutral

Brown - Live

As the colours of the wires in the mains lead of this appliance may not correspond with the coloured markings identifying the terminals in your plug, proceed as follows. The wire which is coloured **green & yellow** must be connected to the terminal which is marked with **E** or \perp .

The wire which is coloured **blue** must be connected to the terminal which is marked with **N**. The wire, which is coloured brown, must be connected to the terminal, which is marked with the letter **L**.

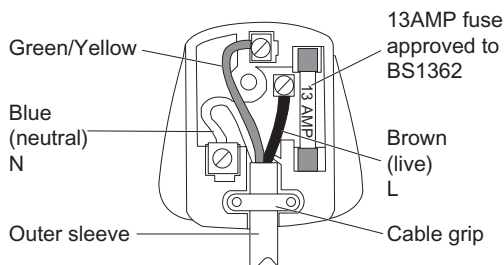


Fig. 46



Warning: Never connect live or neutral wires to the earth terminal of the plug. Only fit an approved 13 Amp BS1363/A plug and the correct rated fuse.



NOTE: If a moulded plug is fitted and has to be removed take great care in disposing of the plug and severed cable, it must be destroyed to prevent engaging into a socket. If the supply cord is damaged it must be replaced by a service agent or a similarly qualified person in order to avoid hazard.

Repair

- > This product does not contain any parts that can be repaired by the consumer. Contact a qualified specialist to have it checked and repaired.

Storage

- > Clean the product as described above.
- > Store the product and its accessories in a dry, frost-free place.
- > Always store the product in place that is inaccessible to children. The ideal storage temperature is between 10 and 30°C.
- > We recommend using the original package for storage or covering the product with a suitable cloth to protect it against dust.

Transportation

- > Switch the product off and disconnect it from power supply before transporting it anywhere.
- > Protect the product from any heavy impact or strong vibrations which may occur during transportation in vehicles.
- > Secure the product to prevent it from slipping or falling over.

Trouble shooting

Suspected malfunctions are often due to causes that the users can fix themselves. Therefore check the product using this section. In most cases the problem can be solved quickly.



WARNING! Only perform the steps described within these instructions! All further inspection, maintenance and repair work must be performed by an authorised service centre or a similarly qualified specialist if you cannot solve the problem yourself!



Caution: Troubleshooting could lead to an increased risk to the operator due to the fact that safety guards / covers may have to be removed. It is therefore particularly important that all the measures necessary for safe working are taken.

Problem	Possible cause	Solution
1. Machine will not run	1.1 No mains voltage	1.1 Check the supply
	1.2 Fuse blown	1.2 Check the fuse and replace if necessary
	1.3 Overload switch has cut in	1.3 Allow the machine to cool and reset the switch
	1.4 Faulty On/Off switch	1.4 Check and replace if necessary
	1.5 Carbon brushes worn	1.5 Check and replace if necessary
	1.6 Faulty motor	1.6 Check and replace if necessary
	1.7 Damaged mains lead	1.7 Check and replace if necessary
	1.8 Safety interlock switch is not correctly engaged	1.8 Check that the extraction port is correctly seated
2. Speed drops whilst the machine is under load	2.1 Cutting depth is too great	2.1 Reduce the cutting depth
	2.2 Feed rate is too fast	2.2 Reduce the feed rate
	2.3 Dull cutter blades	2.3 Replace / sharpen the cutter blades

Problem	Possible cause	Solution
3. The motor cuts out whilst under no load	3.1 Mains failure 3.2 Motor has exceeded its duty cycle 3.3 Faulty motor 3.4 Faulty On/Off switch	3.1 Check the supply 3.2 Allow the motor to cool and reset the overload 3.3 Check and replace if necessary 3.4 Check and replace if necessary
4. The motor cuts out whilst under load	4.1 Motor has exceeded its duty cycle and the overload has cut in 4.2 Cutting depth is too great so the overload has cut in 4.3 Feed rate is too fast so the overload has cut in 4.4 Dull cutter blades so the overload has cut in	4.1 Allow the motor to cool and reset the overload 4.2 Allow the motor to cool and reset the overload. Reduce the cutting depth 4.3 Allow the motor to cool and reset the overload; Reduce the feed rate 4.4 Replace or sharpen the blades, allow the motor to cool and reset the overload
5. Poor finish on workpiece	5.1 Dull or damaged blades 5.2 Uneven feed rate 5.3 Feed rate too fast	5.1 Replace or sharpen the blades 5.2 Ensure constant pressure on the workpiece whilst planing 5.3 Reduce the speed of feed
6. Extraction port becomes blocked whilst thickening (without external extraction)	6.1 Cutting depth too great 6.2 Wood is too damp	6.1 Reduce the cutting depth 6.2 Allow the wood to dry

Problem	Possible cause	Solution
7. Extraction port becomes blocked whilst planing (without external extraction)	7.1 Cutting depth too great 7.2 Feed rate too fast 7.3 Wood is too damp	7.1 Reduce the cutting depth 7.2 Reduce the feed rate 7.3 Allow the wood to dry

Recycling and disposal



- > Waste electrical products should not be disposed of with household waste. Please recycle where facilities exist. Check with your Local Authority or local store for recycling advice.

TITAN®

Declaration of Conformity

We, Importer
Titan Power Tools (UK) Ltd
Trade House, Mead Avenue, BA22 8RT

Declare that the product:
Designation: 1500W jointer planer
Model: TTB342BTE

Complies with the following Directives:
2004/108/EC Electromagnetic Compatibility Directive
2006/42/EC Machinery Directive
2006/95/EC Low Voltage Directive
2011/65/EU Restrictions of the Use of Certain Hazardous Substances in Electrical and Electronic Equipment
2002/96/EC and 2003/108/EC Waste Electrical and Electronic Equipment (WEEE)

Standards and technical specifications referred to:

EN 61029-1/A11:2010
EN 61029-2-3:2011
EN 55014-1/A1:2009
EN 55014-2/A2:2008
EN 61000-3-2/A2:2009
EN 61000-3-11:2000

Authorised Signatory and technical file holder
Date : 25/09/2013

Signature: P.C. Harries

Name / title: Peter Harries / Quality Manager
Titan Power Tools (UK) Ltd. Trade House, Mead Avenue, BA22 8RT



1500W JOINTER PLANER

TTB342BTE



Titan Power Tools (UK) Ltd
Trade House, Mead Avenue,
BA22 8RT
