



Locke & Co Ltd BA22 8RT

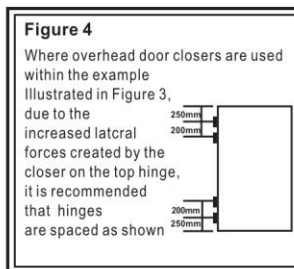
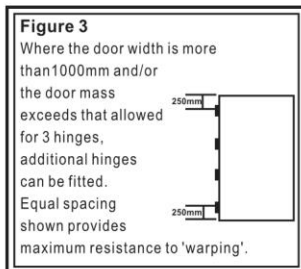
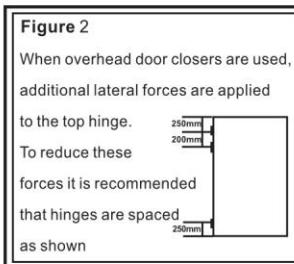
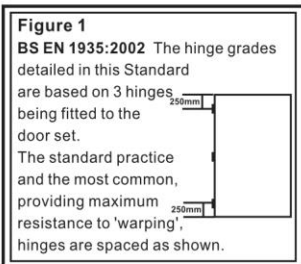
Fixing Instructions

Tools required:

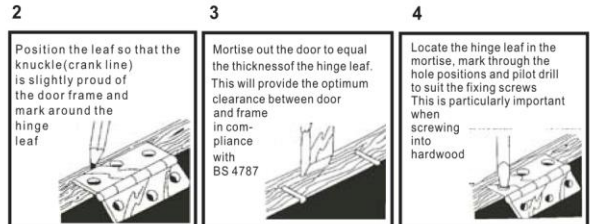
Pencil Rule Mallet/Hammer - Wood chisel - Posidrive screwdriver
Electric drill and drills

Hinge Installation:

1- Identify the required fixing positions of the hinges on the door using the guidelines as detailed below:



All hinges must be lubricated every 25.000 cycles



5 - Secure the hinge leaf to the door with the screws provided and repeat for other hinges.

6 - When all hinges are fitted to the door offer the door up to the frame. Pack under the bottom edge of the door leaf to ensure required clearance between the door and floor and mark resulting hinge positions on frame.

7 - With the door leaf in the 'open' position; open all hinge leaves flat against the door jamb ensuring they align with the positions previously marked on the frame. Once in position, mark out and mortise as per instructions 2 - 5.

8 - Final installation check: Ensure that all screws are fully tightened. If required the hinges may be lubricated using fine machine oil such as '3and1' or similar ensuring that any floor finishes are protected and any excess oil is wiped off on completion.

FIRE DOOR INSTALLATION

This product is **ONLY** suitable for use on fire doors with the correct intumescent protection. Both blades of the hinges must be bedded onto 2mm thick Interdens intumescent sheet material for 60 minute applications. In addition to Interdens, the door frame into which these hinges are fitted must also incorporate 2No. 20mm x 4mm thick Palusol based Intumescent seal in PVC carrier rebated into the frame at the head when used with ITT doorsets for FD60, E60 and EI60 applications.