



Quick Start Guide

EN

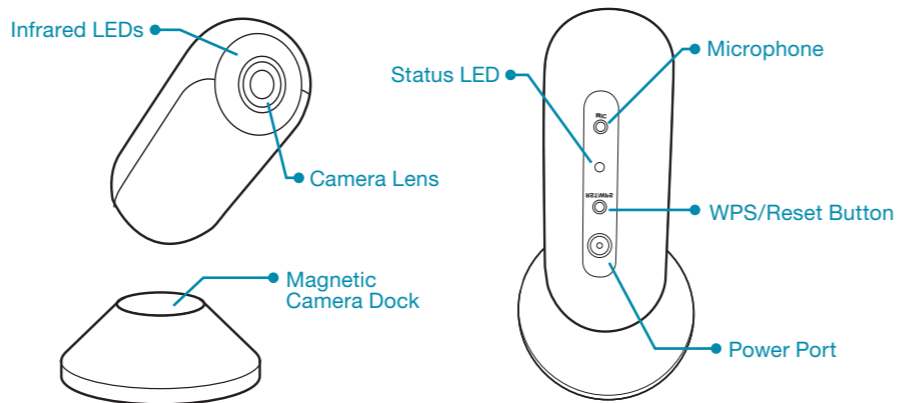
SoundView Indoor Camera

Read me first

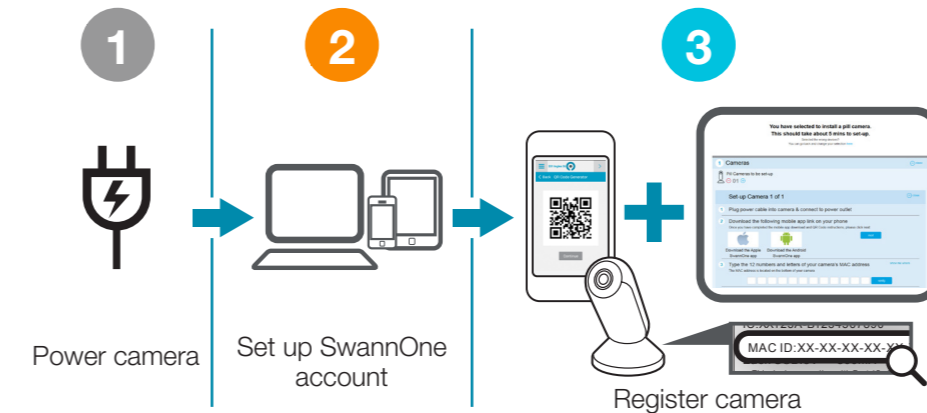


At a Glance

Thank you for choosing the SwannOne™ SoundView Indoor Camera. Please take a moment to familiarize yourself with key areas of the camera.



Get Started in Three Easy Steps



Questions? Get more information regarding the setup and use of your SwannOne products on the web at swannone.com, or simply email us at support@swannone.com.

FCC Statement

This device complies with part 15 of the FCC Rules. Operation is subject to the following two conditions: (1) This device may not cause harmful interference, and (2) This device must accept any interference received, including interference that may cause undesired operation.

SwannOne Warranty

Your SwannOne products are backed by a full 12 month guarantee from the date of purchase. In the unlikely event of anything going wrong, you can have confidence that your purchase is protected. Refer to swannone.com for terms and conditions.



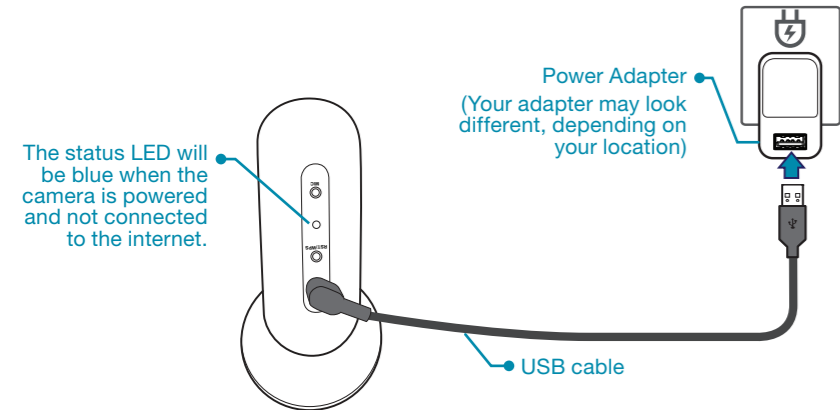
www.swannone.com

© Swann Communications 2015

QHSWO-SVC01K311014E

1 Power Camera

Plug the camera into a wall outlet using the included power adapter and USB cable.



2 Set up SwannOne Account

Creating a SwannOne Account

Before you can view the camera, you will need to create a SwannOne account. Your SwannOne account is what you use to control and manage all your SwannOne devices and services from anywhere.

Go to **home.swannone.com** from your PC, Mac, smartphone or tablet, and sign up for a free account.

Downloading the SwannOne App

Once your SwannOne account is created, download the SwannOne App for iOS or Android on your smartphone or tablet from Apple App Store or Google Play.



3 Register Camera

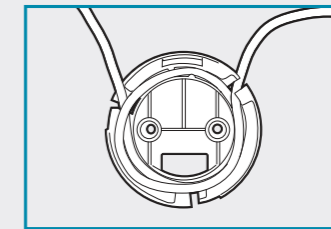
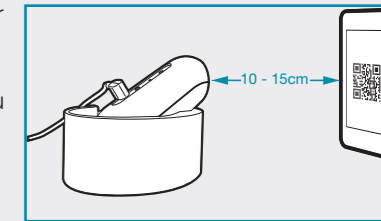
Now that you have your SwannOne account and app ready, getting the camera connected to the internet via your Wi-Fi network with your smartphone is really simple.

1. Launch the SwannOne App and sign in to your account.
2. Follow the on-screen instructions to add the camera to your SwannOne account. During registration, you will be prompted to:
 - configure Wi-Fi network settings
 - scan a unique QR code with the camera
 - enter the camera's MAC ID (first go to **home.swannone.com**, sign in and select the camera you are installing).

If the camera is not connecting as expected, try performing a hard reset by pressing and holding the **Reset** button until the status LED turns blue.

Top Tips

When scanning the QR code, it's best to hold your smartphone at least 10 cm away so the entire QR code can be captured on the camera's view. Guidelines are also printed on the box to show you where to position your smartphone. You'll know the QR code was scanned successfully when the camera's status LED blinks green twice, followed by rapid purple-blue blinking which indicates the camera is connected to the internet.



Keep excess USB cable tidy by removing the base of the camera dock and threading the cable along the channels on the inner side of the base. Replace the base once cable is neatly routed.

SoundView Indoor Camera

A picture that speaks. A sound you can see

Indoor Wi-Fi Video Monitoring
with Intelligent Sound Alerts

HIGH DEFINITION

Enjoy crisp video footage of your home or business in 720p high definition

NIGHT VISION

Keep an eye on things, day & night with infrared night vision

REMOTE VIEWING

View all your cameras from the SwannOne™ app on your Smartphone or tablet

MOBILE ALERTS

Receive alerts on your Smartphone or tablet if motion or sounds-of-interest are detected

ADJUSTABLE POSITIONING

Position the camera on the wall, desk or ceiling using a single flexible mount

SECURE & PRIVATE

All communications are secured with international best practice encryption, ensuring your privacy at all times

EASY TO SET UP, EASY TO USE

We have fitted the SoundView camera with a 3M Command™ strip to enable easy installation & relocation as required. No drilling, no holes!

COMPLETE CONTROL

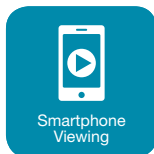
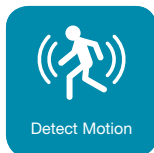
Combine with the SwannOne™ Smart Hub & other accessories for a complete & secure smart home

OPTIONAL SERVICE PLANS

Flexible professional monitoring, home automation & cloud video storage plans available for purchase

INTELLIGENT SOUND ALERTS

Intelligent sound alerts (including - baby crying, smoke & carbon monoxide alarm detection) are available via optional plans*



* Fees may apply

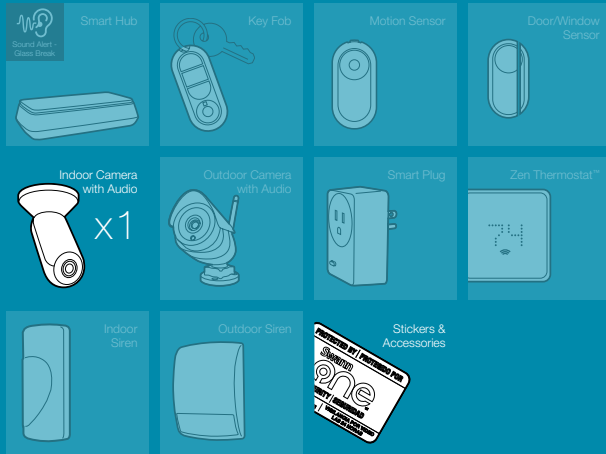
Compatible with



Android®
Devices

In the box

SwannOne™ SoundView Indoor Camera
 Ethernet Cable 6.5ft / 2m
 Power Adapter
 Security Stickers
 Quick Start Guide



Technical Specifications

Video Quality	720p HD
Viewing Angle	76°
IR LEDs	10
Dimensions	1.6 x 1.6 x 4.2" (body), 2.8 x 2.8" (base) / 41 x 41 x 106mm (body), 70 x 70mm (base)
Weight	8.9oz / 253g
Power	5VDC, 1.0A
Indoor/Outdoor	Indoor use only

System Requirements

Internet Connection	High-Speed
Wireless Network	Wi-Fi b/g/n
Internet Browsers	Internet Explorer 9+, Firefox, Safari 7+, Chrome
Compatible Devices	iPhone, iPad, iPod Touch, Android devices, PC & Mac computers
Operating Systems	iOS 7 & later, Android 4.0 & later, Microsoft® Windows® 7 & later, Mac OS 10.7 & later

The SwannOne App

The SwannOne app in conjunction with the Smart Hub brings your SwannOne Smart Home to life, allowing you to monitor & control your system from anywhere. As the environment changes and technology advances, your SwannOne system will continually be developed and enhanced and you will from time to time receive software updates which will allow you to get even more out of your SwannOne Smart Home.



Customize right mix of devices



Customizable to your needs

SwannOne grows with you. If you decide to move, it can easily move with you. If your needs change – a bigger home or the addition of a holiday home perhaps, you can scale up your system with a wide range of accessories available.

Requires browser interface for setup

24/7 Support

With SwannOne™ you really are in control & we'll be right there with you. Our multilingual support team are here to answer any questions you may have, no matter how simple or complex, 24/7. That's our promise.

For more information about SwannOne visit:

swannone.com

SWO-SVC01K