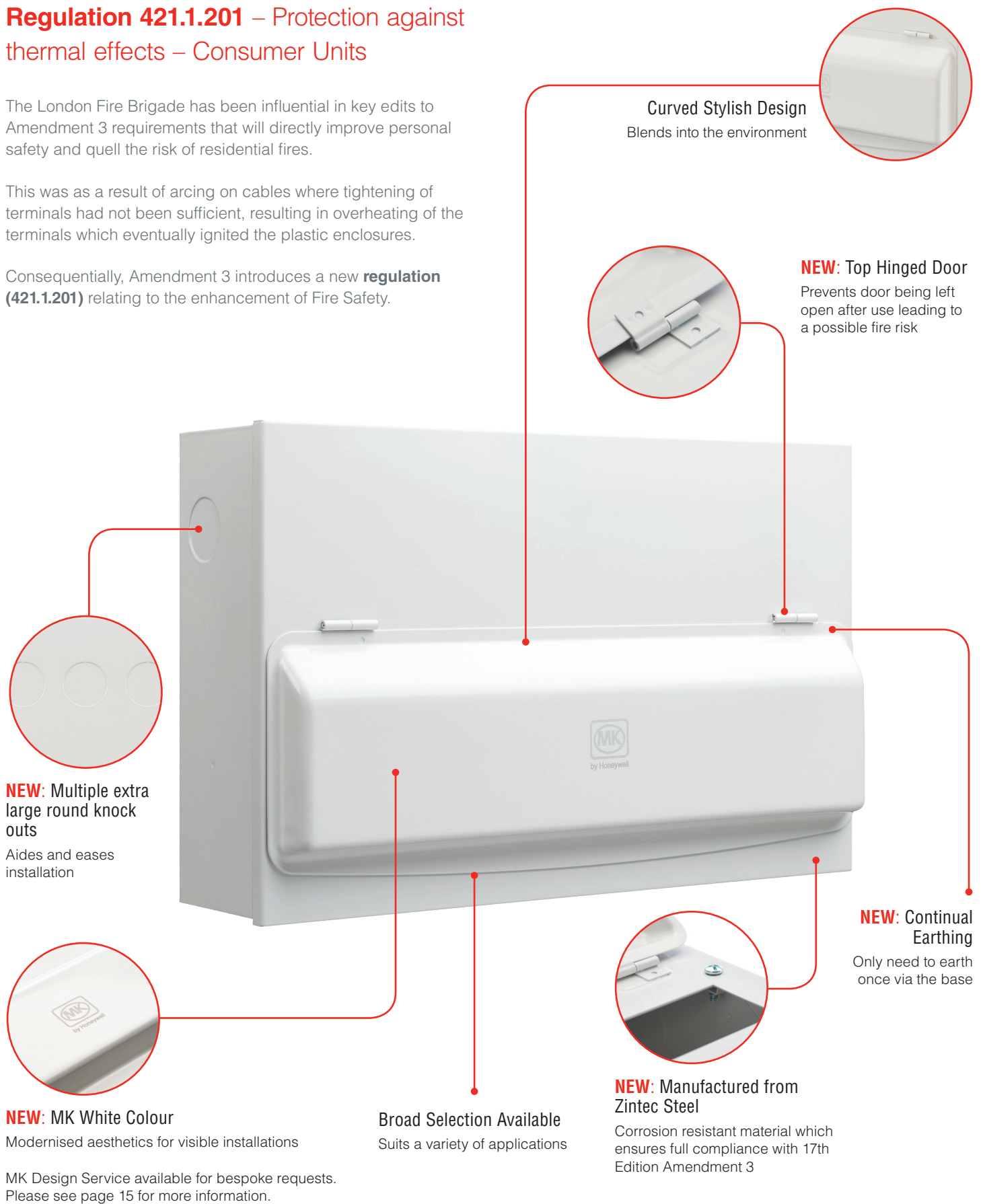


Regulation 421.1.201 – Protection against thermal effects – Consumer Units

The London Fire Brigade has been influential in key edits to Amendment 3 requirements that will directly improve personal safety and quell the risk of residential fires.

This was as a result of arcing on cables where tightening of terminals had not been sufficient, resulting in overheating of the terminals which eventually ignited the plastic enclosures.

Consequently, Amendment 3 introduces a new **regulation (421.1.201)** relating to the enhancement of Fire Safety.



Curved Stylish Design
Blends into the environment

NEW: Top Hinged Door
Prevents door being left open after use leading to a possible fire risk

NEW: Multiple extra large round knock outs
Aides and eases installation

NEW: Continual Earthing
Only need to earth once via the base

NEW: MK White Colour
Modernised aesthetics for visible installations

Broad Selection Available
Suits a variety of applications

NEW: Manufactured from Zintec Steel
Corrosion resistant material which ensures full compliance with 17th Edition Amendment 3

MK Design Service available for bespoke requests. Please see page 15 for more information.

Regulation 421.1.201 states that:

Within domestic (household) premises, consumer units and similar switchgear assemblies shall comply with BS EN 61439 3 and shall have their enclosure manufactured from a non-combustible material, or enclosed in a cabinet or enclosure constructed of non-combustible material and complying with **regulation 132.12**.

Regulation 421.1.201 will not be mandatory until 1st January 2016.

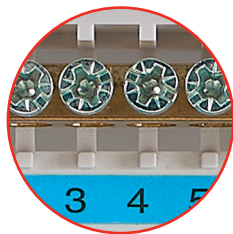
In line with this new Regulation, MK has introduced a new portfolio of metal consumer units into their MK Sentry range which are manufactured from corrosion resistant Zintec Steel and have designed features to provide full compliance to Amendment 3 **regulation 421.1.201**, as detailed here.



Fixing holes
Tripod fixing to cope with uneven surfaces



NEW: 10mm Increased Height
Additional wiring space for installation ease

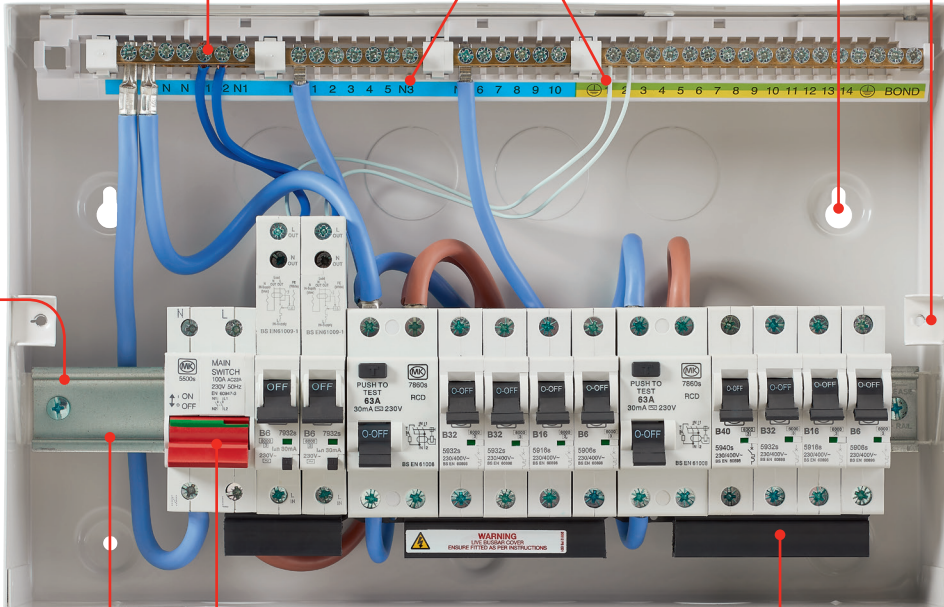


Backed out and captive combi-head screws
Allows simple and speedy installation

Colour coded earth and neutral terminal locked
At top of unit for ease of wiring



Easily removable Din Rail
Simplifying and easing first fix



Floating busbar system
For maximum installation flexibility including acceptance of control modules



Offset Incomer
Provides additional wiring space making mains input connections easier

NEW: Supporting Din Rail "T" Bar

Additional support to prevent bowing and twisting which has been raised for improved cable routing