



Anti-Snap Cylinder Fitting Instructions



TS 007: 2012

Tools Required



Cross Head
Screwdriver



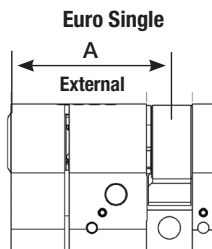
Ruler

Please Note: 2 fixing screws of different lengths are provided with the cylinder. Select the screw length suitable for your lock.

How to measure your cylinder

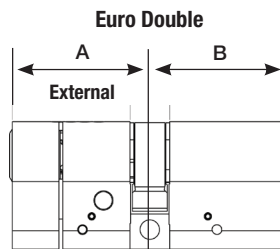
It is important that you select the correct size cylinder for your door. Not only does the cylinder need to be the correct length, but you also need to be aware that the Anti-Snap protection is on the external side of the cylinder which is the side that will be visible on the external side of your front door.

To ensure that you purchase the correct size cylinder for your lock, remove your old cylinder and measure each side of the cylinder as shown on the diagrams.



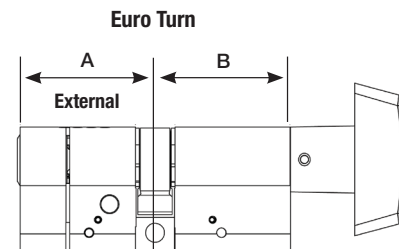
The Anti-Snap protection is on the external side of the cylinder. The first size on the product code indicates the external side.

E.g. Part Number AS3010PB
'A' Length (External) = 30mm



The Anti-Snap protection is on the external side of the cylinder. The first size on the product code indicates the external side.

E.g. Part Number AS5040PB
'A' Length (External) = 50mm
'B' Length (Internal) = 40mm



For thumb turn cylinders, the first size on the product code indicates the side the thumb turn is on. The Anti-Snap protection is on the external side of the cylinder.

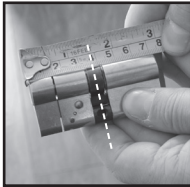
E.g. Part Number AS3050TPB
'A' Length (External) = 50mm
'B' Length (Internal) = 30mm

Fitting instructions



Step 1:

Remove your cylinder from the door by unscrewing the fixing screw and with the key inserted in the cylinder turn the key and pull outwards.



Step 2:

Measure each side of the cylinder to the centre of the cam making sure you indicate which is the external side and internal side.

Step 3:

Purchase your new Yale Anti-Snap cylinder.



Step 4:

Due to the security features of the product to fit your new cylinder you will need to take the door handles off the door and place the cylinder in position from the outside of the door.

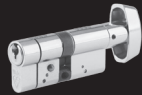
Step 5:

With the key inserted in the cylinder, turn it so that the locking cam is in line with the cylinder body and place in position in the lock.



Step 6:

Secure the cylinder in position with the fixing screw provided and re-fit your door handles.



If you are fitting a euro turn cylinder follow the same steps but at **step 4** take the thumbturn off the cylinder using the allen key provided before inserting the cylinder in the door. The thumbturn will need to be re-assembled on the cylinder when the door handles are fixed back onto the door after **step 6**.

TS 007:2012 1 Star Product Information:

This cylinder offers resistance to many types of attack. It is designed to be used in conjunction with 2 star security door furniture to ensure enhanced resistance to all commonly used attack methods. Therefore this product **MUST** be used in conjunction with 2 star security door furniture meeting TS 007 to ensure security.

Such furniture can be recognised by the two-star marking which may either be visible from the outside on an installed handle or, failing this, will be visible once the outside handle has been removed. Security furniture can be of several types, including a handle with a reinforced backplate, an escutcheon or a device which is concealed behind the handle backplate. In all cases, the purpose is to protect your cylinder from force attack.



Fitting instructions & 'how to videos' are available to download on www.yale.co.uk.