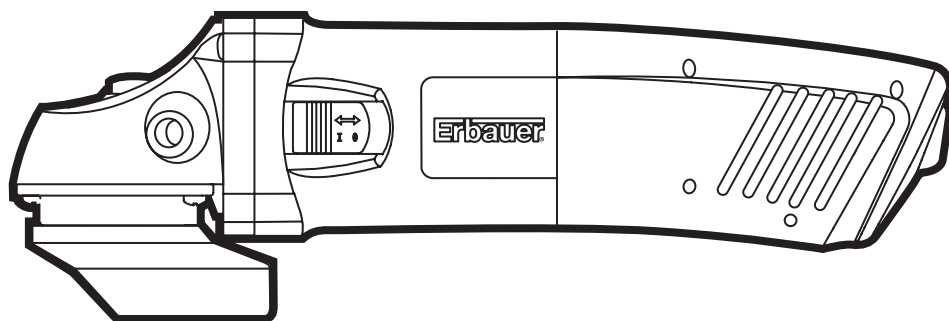




Erbauer®



ERB013GRD

2 WARRANTY
YEARS

115mm ANGLE GRINDER







Erbauer®

Congratulations on your purchase of a quality power tool from Screwfix Direct Ltd. This product should give you reliable service but for your peace of mind this Erbauer power tool does carry a 24-month guarantee, the terms of which are detailed below.

If this product develops a fault within the guarantee period contact Screwfix Direct Ltd on Freephone 0500 41 41 41.

Please retain this handbook in case you need to refer to safety, care or guarantee information in the future.

GUARANTEE

This Erbauer product carries a Screwfix Direct Ltd guarantee of 24 months. If your product develops a fault within this period, you should, in the first instance contact Screwfix Direct Ltd on Freephone 0500 41 41 41. If the fault occurs within the first 24 months, you may return the goods for a full refund or we will repair or replace the goods if you prefer. When repair is not practical or identical goods are not available, alternative goods of similar specification and quality will usually be provided but, failing this, you will be offered a partial or full refund depending on the time period since purchase.

This guarantee specifically excludes losses caused due to:

- Fair wear and tear
- Misuse or abuse
- Lack of routine maintenance
- Failure of consumable items (such as batteries)
- Accidental damage
- Cosmetic damage
- Failure to follow manufacturer's guidelines
- Loss of use of the goods
- Repairs attempted by anyone, unless authorised by Screwfix Direct Ltd.

This guarantee does not affect your statutory rights. This guarantee is only valid in the UK.

For further technical advice and spare parts please contact the customer helpline number on 0845 607 6380.

115mm ANGLE GRINDER





SAFETY INSTRUCTIONS



Warning! Read all instructions. Failure to follow all instructions listed below may result in electric shock, fire and/or serious injury. The term “power tool” in all of the warnings listed below refers to your mains operated (corded) power tool.

SAVE THESE INSTRUCTIONS

1. Work area safety

- a. Keep work area clean and well lit.** Cluttered or dark areas invite accidents.
- b. Do not operate power tools in explosive atmospheres, such as in the presence of flammable liquids, gases or dust.** Power tools create sparks which may ignite the dust or fumes.
- c. Keep children and bystanders away while operating a power tool.** Distractions can cause you to lose control.

2. Electrical safety

- a. Power tool plugs must match the outlet. Never modify the plug in any way. Do not use any adapter plugs with earthed (grounded) power tools.** Unmodified plugs and matching outlets will reduce risk of electric shock.
- b. Avoid body contact with earthed or grounded surfaces, such as pipes, radiators, ranges and refrigerators.** There is an increased risk of electric shock if your body is earthed or grounded.
- c. Do not expose power tools to rain or wet conditions.** Water entering a power tool will increase the risk of electric shock.
- d. Do not abuse the cord. Never use the cord for carrying, pulling or unplugging the power tool. Keep cord away from heat, oil, sharp edges or moving parts.** Damaged or entangled cords increase the risk of electric shock.
- e. When operating a power tool outdoors, use an extension cord suitable for outdoor use.** Use of a cord suitable for outdoor use reduces the risk of electric shock.

3. Personal safety

- a. Stay alert, watch what you are doing and use common sense when operating a power tool. Do not use a power tool while you are tired or under the influence of drugs, alcohol or medication.** A moment of inattention while operating power tools may result in serious personal injury.
- b. Use personal protective equipment. Always wear eye protection.** Protective equipment such as dust mask, non-skid safety shoes, hard hat, or hearing protection used for appropriate conditions will reduce personal injuries.
- c. Prevent unintentional starting. Ensure the switch is in the off-position before connecting to power source and/or battery pack, picking up or carrying the tool.** Carrying power tools with your finger on the switch or energising power tools that have the switch on invites accidents.
- d. Remove any adjusting key or wrench before turning the power tool on.** A wrench or a key left attached to a rotating part of the power tool may result in personal injury.
- e. Do not overreach. Keep proper footing and balance at all times.** This enables better control of the power tool in unexpected situations.
- f. Dress properly. Do not wear loose clothing or jewellery. Keep your hair, clothing and gloves away from moving parts.** Loose clothes, jewellery or





long hair can be caught in moving parts.

g. If devices are provided for the connection of dust extraction and collection facilities, ensure these are connected and properly used. Use of dust collection can reduce dust-related hazards.

4. Power tool use and care

a. Do not force the power tool. Use the correct power tool for your application. The correct power tool will do the job better and safer at the rate for which it was designed.

b. Do not use the power tool if the switch does not turn it on and off. Any power tool that cannot be controlled with the switch is dangerous and must be repaired.

c. Disconnect the plug from the power source and/or the battery pack from the power tool before making any adjustments, changing accessories, or storing power tools. Such preventive safety measures reduce the risk of starting the power tool accidentally.

d. Store idle power tools out of the reach of children and do not allow persons unfamiliar with the power tool or these instructions to operate the power tool. Power tools are dangerous in the hands of untrained users.

e. Maintain power tools. Check for misalignment or binding of moving parts, breakage of parts and any other condition that may affect the power tool's operation. If damaged, have the power tool repaired before use. Many accidents are caused by poorly maintained power tools.

f. Keep cutting tools sharp and clean. Properly maintained cutting tools with sharp cutting edges are less likely to bind and are easier to control.

g. Use the power tool, accessories and tool bits etc. in accordance with these instructions, taking into account the working conditions and the work to be performed. Use of the power tool for operations different from those intended could result in a hazardous situation.

5. Service

a. Have your power tool serviced by a qualified repair person using only identical replacement parts. This will ensure that the safety of the power tool is maintained.

115mm ANGLE GRINDER





HEALTH ADVICE




Warning! When drilling, sanding, sawing or grinding, dust particles will be produced. In some instances, depending on the materials you are working with, this dust can be particularly harmful to you (e.g. lead from old gloss paint).

You are advised to consider the risks associated with the materials you are working with and to reduce the risk of exposure. You should:

- Work in a well-ventilated area.
- Work with approved safety equipment, such as those dust masks that are specially designed to filter microscopic particles.

ADDITIONAL SAFETY POINTS FOR YOUR ANGLE GRINDER

1. Remove the plug from the socket before carrying out any adjustment, servicing or maintenance.
2. Fully unwind cable drum extensions to void potential overheating. When an extension cable is required you must ensure it has the correct ampere rating for your power tool and is in a safe electrical condition.
3. When an extension cable is required you must ensure it has the correct ampere rating for your power tool and is in a safe electrical condition.
4. Ensure your mains supply voltage is the same as your tool 's rating plate voltage.
5. Your tool is double insulated for additional protection against possible electrical insulation failure within the tool. 
6. Always check walls, floors and ceilings to void hidden power cables and pipes.
7. After long working periods external metal parts and accessories could be hot.
8. Ensure your angle grinder is switched off before inserting the mains plug.
9. Only use your angle grinder for dry grinding/cutting.
10. Ensure all electric cables can not contact your angle grinder rotating disc.
11. Never stop a disc or accessory by applying side load.
12. Never cut with grinding disc or grind with a cutting disc.
13. Do not use cutting off wheel for side grinding.
14. Check that speed marked on the wheel is equal to or greater than the rated speed of the grinder.
15. Ensure that the wheel dimensions are compatible with the grinder.
16. Abrasive wheels shall be stored and handled with care in accordance with manufacturer 's instruction.
17. Inspect the grinding wheel before use, do not use chipped, cracked or otherwise defective products.
18. Ensure that mounted wheels and points are fitted in accordance with the manufacturer 's instructions.
19. Ensure that blotters reused when they are provided with the bonded abrasive product and when they are required.
20. Ensure that the abrasive product is correctly mounted and tightened before use and run the tool at no-load for 30 seconds in a safe position, stop immediately if there is considerable vibration or if other defects are detected. If this condition occurs, check the machine to determine the cause.
21. If using cup wheels cones, flap wheels with threaded holes, cone must be taken to ensure that no parts touch the grinder when moving.
22. If a guard is supplied with the tool never use the tool without such a guard.
23. Do not use separate reducing bushings or adapters to adapt large hole abrasive



wheels.

24. For tools intended to be fitted with threaded hole wheel, ensure that the thread in the wheel is long enough to accept the spindle length.

25. Check that the work piece is properly supported.

26. Ensure that sparks resulting from use do not create a hazard e.g. do not hit persons, or ignite flammable substances.

27. Ensure that ventilation opening are kept clear when working in dusty conditions. If it should become necessary to clear dust, first disconnect the tool from the mains supply, use non metallic objects, and void damaging internal parts.

28. Always use eye and ear protection. Other personal protective equipment such as dust mask, gloves, helmet and apron should be worn when necessary. If in doubt, wear the protective equipment.

29. Do not cut, grind or sand material containing asbestos.

30. If the supply cord is damaged, it must be replaced by a services agent or a similar qualified person in order to avoid hazard.

31. The wheel continues to rotate after the tool is switched off.

Double insulation:

The tool is double insulated. This means that all the external metal parts are electrically insulated from the mains power supply. This is done by placing insulation barriers between the electrical and mechanical components making it unnecessary for the tool to be earthed.

Important note

Be sure the supply is the same as the voltage given on the rating plate. The tool is fitted with a two-core cable and plug.

Remove the mains plug from socket before carrying out any adjustment or servicing.

SYMBOLS



Read the manual



Warning



Wear gloves



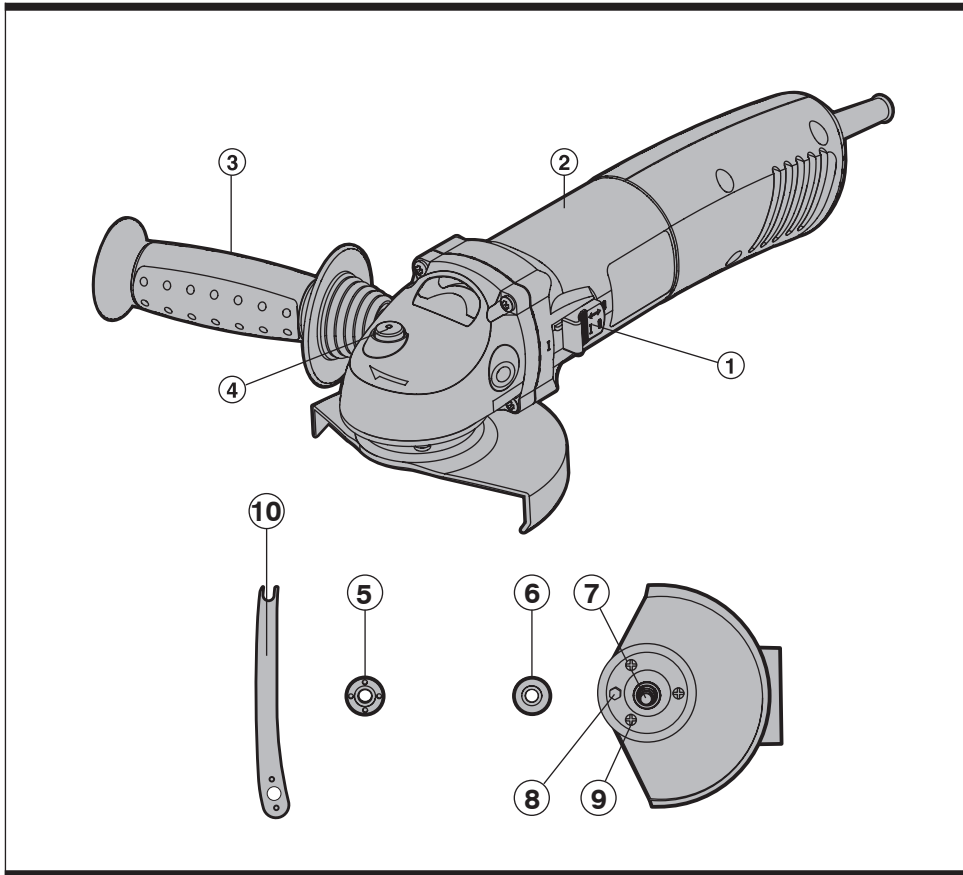
Wear dust mask, eye & ear protection



Conforms to relevant safety standards

115mm ANGLE GRINDER





1. ON-OFF SWITCH

2. HAND GRIP AREAS

3. ANTI-VIBRATION AUXILIARY HANDLE (2 POSITIONS)

4. SPINDLE LOCK BUTTON

5. OUTER FLANGE

6. INNER FLANGE

7. SPINDLE

8. GUARD LOCK BOLT

9. GUARD SCREW (X3)

10. SPANNER





TECHNICAL DATA

Voltage:	230V~50Hz
Input power:	850W
No load speed:	10,000min ⁻¹
Maximum disc diameter:	115mm
Spindle size:	M14
Disc bore diameter:	22mm
Double insulation:	
Weight:	2.6kg

NOISE AND VIBRATION DATA

Sound pressure level:	92.5dB
Sound power level:	103.5dB
Vibration level:	3.44m/s ²

ACCESSORIES

Anti-vibration auxiliary handle
Spanner

1pc
1pc

Note: We do not provide the any disc for this angle grinder as part of this pack

115mm ANGLE GRINDER



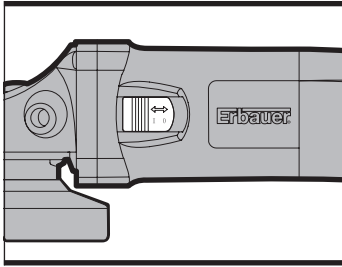


Fig 1

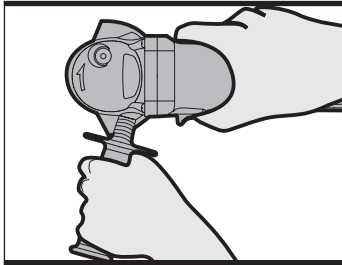


Fig 2

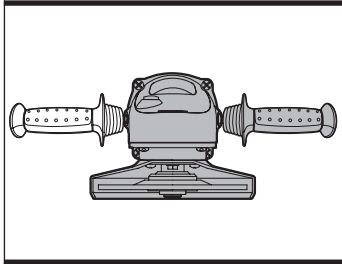


Fig 3

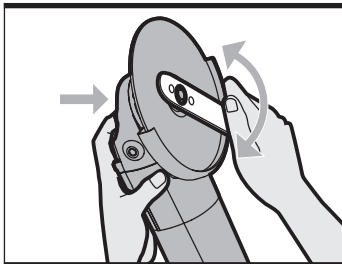


Fig 4

OPERATION INSTRUCTIONS

Warning: Before using your angle grinder be sure to read the instruction manual carefully.

1. On/off switch

Slide the switch forward to start your tool and lock your tool for continuous working. To switch off your tool, depress the rear of the spring loaded switch (See Fig 1).

2. Hand grip areas

Always hold your angle grinder firmly with both hands when operating (See Fig 2).

3. Anti-vibration auxiliary handle

This auxiliary handle incorporates a flexible vibration absorbing mounting between the bolt and handle grip to reduce vibration and increase comfort.

Note: The handle fixing to the gear case is flexible and not a rigid clamp. You have the option of two working positions to provide the safest and most comfortable control of your angle grinder (See Fig 3). The handle is screwed clockwise into either hole on the sides of the gear case. Always use the auxiliary handle.

4. Spindle lock button

Must only be used when changing a disc. Never press when the disc is rotating!

5. Disc fitting

The inner flange (6) is located over the spindle (7) and on the two spindle flats. Locate the disc onto the inner flange and then the outer flange (5) screwed onto the spindle. Press the spindle lock button (4) and rotate the spindle until it locks, then firmly tighten the outer flange using your special spanner to clamp the disc (See Fig 4). The pins on your special spanner locate in the holes on the outer flange. Check the disc rotates freely and is securely clamped. Make no load test run for 20 seconds to check disc vibration and disc run out. To remove a disc, reverse these instructions.





6. Adjustable outer flange clamping

The outer flange (5) should be adjusted to suit different disc thickness. For thinner cutting or diamond discs the raised part of the outer flange is fitted facing away from the disc (See Fig 5b). For thicker grinding discs the raised part of the outer flange is fitted facing the disc to provide improved support for the disc hole (See Fig 5a). Always ensure your disc is securely clamped.

7. Guard adjustment

To move the guard you must release the guard lock bolt (8) using the other end of the special spanner (See Fig 6). The guard can then be rotated to provide maximum protection against sparks and debris. Finally, tighten the guard bolt (8).

8. Removing the guard

Only to be removed for use with sanding, flap disc and wire cup brush accessories. NEVER remove your guard for any other working conditions. Remove the disc, both flange, guard bolt, screws x 3 (9) and guard. Keep all parts in a safe place.

9. Fitting sanding accessories or wire cup brush

Check the accessory specification for rated speed, spindle thread and other dimensions are correct for your angle grinder. Follow the fitting instructions with your new accessory, which allows efficient material removal.

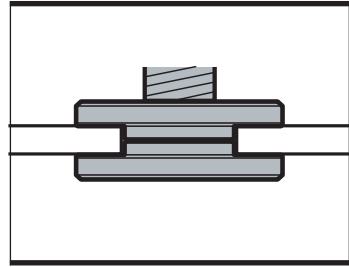


Fig 5a

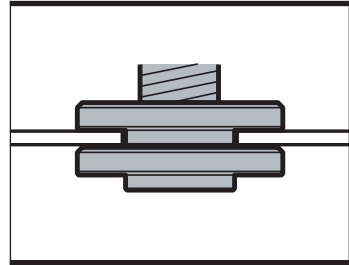


Fig 5b

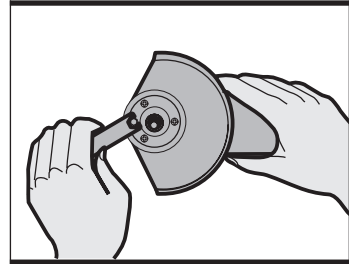


Fig 6

115mm ANGLE GRINDER





WORKING HINTS FOR YOUR ANGLE GRINDER

1. Your angle grinder is useful for both cutting through metals, i.e. for removing screw heads, and also for cleaning / preparing surfaces, i.e. before and after welding operations.
2. Different types of wheel/cutter will allow the grinder to meet various needs. Typically, wheels/cuttings are available for mild steel, stainless steel, stone and brick. Diamond impregnated discs are available for very hard materials.
3. If the grinder is used on soft metals such as aluminum, the wheel will soon clog and will have to be changed.
4. At all times, let the grinder do the work, do not force it or apply excessive pressure to the wheel/disc.
5. If cutting a slot ensures that the cutter is kept aligned with the slot, twisting the cutter may cause the disc to shatter. If cutting through thin sheet only allow material, excessive penetration can increase the chance of causing damage.
6. If cutting stone or brick, it is advisable to use a dust extractor.

MAINTENANCE



Warning: Ensure the grinder is disconnected from the mains power supply before attempting any maintenance.

1. Keep the grinder ventilation slots clean and free from obstructions. If available, blow compressed air into the vents to clear any internal dust (safety goggles must be worn when undertaking this process).
2. Keep the outer case of the grinder clean and free from grease. Do not wash with water or use solvents or abrasive. Use only mild soap and damp cloth to clean the tool. Never let any liquid get inside the tool. Never immerse any part of the tool into a liquid.
3. Your angle grinder requires no additional lubrication. There are no user serviceable parts in your power tool.
4. Always store your power tool in a dry place.
5. If the supply cord of this power tool is damaged,





it must be replaced by a specially prepared cord available through the service organisation.


TROUBLESHOOTING

Although your new angle grinder is really very simple to operate, if you do experience problems, please check the following:

1. If your grinder will not operate check the power at the main plug.
2. If your grinder wheel wobbles or vibrates, check that outer flange is tight, check that the wheel is correctly located on the flange plate.
3. If there is any evidence that the wheel is damaged do not use as the damaged wheel may disintegrate, remove it and replace with a new wheel. Dispose of old wheels sensibly.
4. If working on aluminum or a similar soft alloy, the wheel will soon become clogged and will not grind effectively.
5. If the supply cord of this power tool is damaged, it must be replaced by a specially prepared cord available through the service organisation.

ENVIRONMENTAL PROTECTION



Waste electrical products should not be disposed of with household waste. Please  recycle where facilities exist. Check with your local Authority or retailer for recycling advice.

115mm ANGLE GRINDER





PLUG REPLACEMENT

If you need to replace the fitted plug then follow the instructions below.

IMPORTANT

The wires in the mains lead are coloured in accordance with the following code:

Blue - Neutral

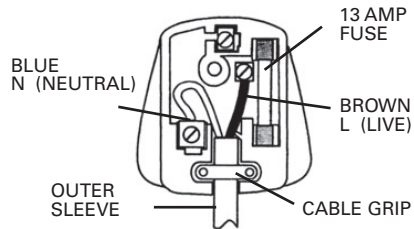
Brown - Live

As the colours of the wires in the mains lead of this appliance may not correspond with the coloured

markings identifying the terminals in your plug, proceed as follows. The wire which is coloured blue must be connected to the terminal which is marked with N. The wire which is coloured brown must be connected to the terminal which is marked with L.

Warning: Never connect live or neutral wires to the earth terminal of the plug. Only fit an approved BS1363/A plug and the correct rated fuse.

Note: If a moulded plug is fitted and has to be removed take great care in disposing of the plug and severed cable, it must be destroyed to prevent engaging into a socket.





Erbauer®

Declaration of Conformity

We, Importer
Erbauer (UK) LTD BA22 8RT

Declare that the product
**115mm ANGLE GRINDER
ERB013GRD**

Complies with the essential health and safety requirements of the following directives:

EC Machinery Directive **-98/37/EC**

EC Low Voltage Directive **-73/23/EEC amended by 93/68/EEC**

EC Electromagnetic Compatibility Directive **-89/336/EEC amended by 93/68/EEC**

2002/95/EC Restrictions of the Use of Certain Hazardous Substances in Electrical and Electronic Equipment

Standards and technical specifications referred to:

EN 55014-1

EN 55014-2

EN 61000-3-2

EN 61000-3-3

EN 50144-2-3

EN 50144-1

Authorised Signatory

Date: 01/01/07

Signature: *P. C. Harries*

Name: Peter Harries
Erbauer (UK) Ltd
Quality Manager

2007

115mm ANGLE GRINDER





Erbauer®

