




## GU10, ALU111 & CDM-T RECESSED MULTIPLE LUMINAIRES



42025  
87551

**PLEASE READ THESE INSTRUCTIONS CAREFULLY BEFORE INSTALLATION  
LEAVE A COPY FOR THE USER / MAINTENANCE ENGINEER FOR FUTURE REFERENCE**

### IMPORTANT INSTALLATION INFORMATION

- Installation should be carried out in accordance with the latest edition of the I.E.E. Wiring Regulations (BS7671) and taking into consideration the latest Building Regulations. If in doubt, consult a qualified electrician.
- These luminaires are for indoor use only.
- **IMPORTANT.** Ensure that ALL electrical connections are tight with no loose strands, including factory made connections.
- Ensure there is adequate free air circulation of at least 50mm around the luminaire. All luminaires run hot. It is the installer's responsibility to consider fire risk and take appropriate precautions.
- **WARNING! These luminaires can become very hot!** These luminaires should be installed where they cannot easily come into contact with bare skin. Do not touch the luminaire or lamp without allowing sufficient time after switch off to cool.
- Input voltage - 240V 50Hz AC for GU10 luminaires. MAX 50W/single spot.
- Low Voltage luminaires require transformers to operate the lamp. E.g. Aurora AU-E60 – AU-210. Ensure the correct rating transformer is used, dependant on the number of lamps used. MAX 50W/single spot.
- HID luminaires require HID ballast to operate the lamp. E.g. Aurora AU-SH150Z – AU-SH70Z. Ensure the correct rating HID ballast is used, dependant on the number of lamps used. MAX 150W/single spot.
- The luminaire must not, under any circumstances, be covered with any insulation materials and luminaires must not be installed close to flammable materials.
- Before commencing installation or maintenance, ensure electricity is switched off at the mains.
- The nearest illuminated surface must be at least 0.5m from the front of the fitting.
-  Suitable for mounting on normally flammable surfaces.

### IMPORTANT USER INFORMATION

- Always switch off mains supply before servicing, fitting, moving position of the luminaire or changing the lamp.
- Replace failed lamps immediately. Allow the lamp and fitting to cool before replacing lamp.
- Fit self-shielding lamps only (GU10 luminaires).
- Replace any cracked protective glass immediately and use only original parts to do this.
- Check that the correct lamp type and wattage is fitted (See product label for correct maximum lamp wattage).

### INSTALLATION INSTRUCTIONS

1. Remove the cover fixing screws.
2. Select the required position for the luminaire ensuring the clearances of 50mm are observed around the luminaire. Beware of joists, water pipes and electric cables. Use the cut-out template on the inside lid of the box to cut a hole in the ceiling for the type of luminaire to be fitted.
3. **GU10 luminaires.** Connect the mains supply cable(s) to the terminal block (see Fig.1). Ensure that there are no exposed conductors or trapped insulation.
4. **AR111 luminaires.** Connect the luminaire to the transformer using the terminal block supplied (see Fig.2). No earth connection is required. Ensure that the fitting does not come into contact with any earthed metal. Mains connection to the transformer should be made using a suitable electrical junction box in compliance with the I.E.E. Wiring Regulations.

5. **CDM-T luminaires.** Connect the luminaire to the HID ballast using the terminal block supplied (see Fig.2). No earth connection is required. Ensure that the fitting does not come into contact with any earthed metal. Mains connection to the transformer should be made using a suitable electrical junction box in compliance with the I.E.E. Wiring Regulations.
6. The "looping-in" of the fixed wiring supply should be maintained. See Fig. 3.
7. Slide the legs of the mounting spring clips into the ceiling cut-out and push the luminaire up into the aperture. Lock down securing clips on larger fittings, (see Fig.4) drag down clip with finger to secure in position. Ensure that luminaire is securely located. (see Fig.5)
8. GU10 and AR111 luminaires. Remove lamp retaining clip and insert lamp, replace clip.
9. CDM-T luminaires. Twist off lamp housing ring insuring not to drop glass cover, insert lamp and twist back on ring with cover in place. Switch on the power supply.

## GENERAL

- GU10 and AR111 luminaires may be dimmed using an incandescent dimmer switch. Ensure that the maximum load rating of the dimmer is not exceeded. (Refer to dimmer manufacturers instructions)
- CDM-T luminaires is not dimmable.
- Aurora low voltage luminaires (class III) should be used with a double insulated, safety extra low voltage (SELV) isolating transformer only.
- Class III luminaires **MUST NOT** be connected to a mains supply.
- The transformer should be located in a well-ventilated position, not closer than 20cm from the luminaire to avoid overheating.
- Ensure that the correct rating of transformer is used for the total lamp wattage. Electronic transformers require a minimum load to operate. E.g. a 20-60VA transformer requires a minimum load of 20W.

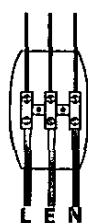


Fig. 1

Diagram showing terminal block wiring.

L - Live  
E - Earth  
N - Neutral

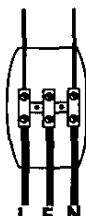


Fig. 2

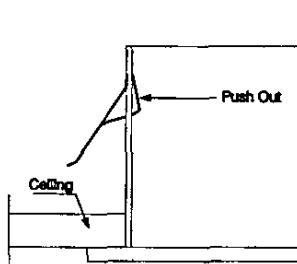


Fig. 4

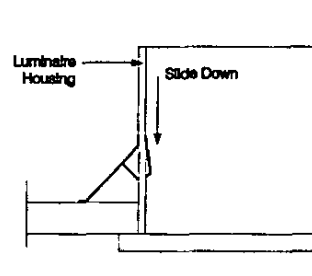
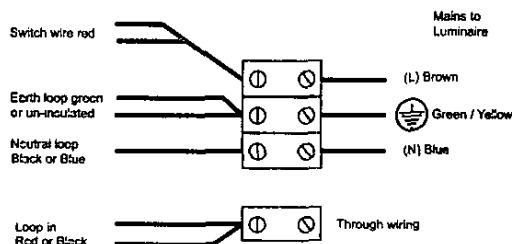


Fig. 5



If your luminaire is not at the end of a wiring spur, then there will be an extra pair of wires together (looping-in wires) in the supply wiring which could be coloured black or red. These should be connected together using a fourth approved terminal block as shown. If in doubt consult a qualified electrician

Fig. 3

## GUARANTEE

This product is guaranteed in the UK for a period of 1 year from the date of purchase. The guarantee is invalid in the case of improper use, installation, tampering, removal of the Q.C. date label, installation in an improper working environment or installation not according to the current edition of the I.E.E. Wiring Regulations (BS7671). Should this product fail during the guarantee period it will be replaced free of charge, subject to correct installation and return of the faulty unit. Aurora does not accept responsibility for any installation costs associated with the replacement of this product. Your statutory rights are not affected. Aurora reserves the right to alter specifications without prior notice.