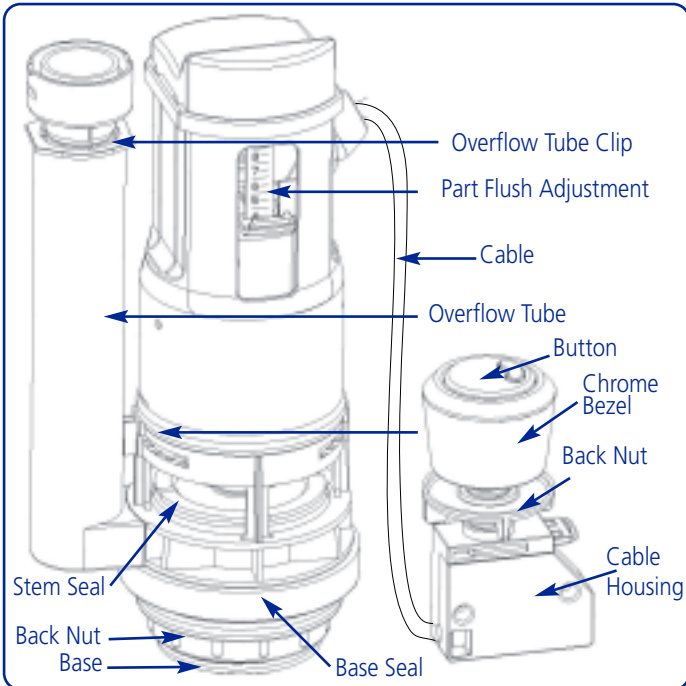


Macdee 1.5" / 2.0" Kayla Cable Operated Dual Flush Outlet Valve

Please ensure these instructions are followed carefully – if you are unsure about any aspect of the installation, please consult a qualified installer. In the event of any problem with the function of this equipment, please check installation before consulting your supplier.

WARNING: Do not use mole grips and do not overtighten plastic nuts.
Do not use a sealing compound as damage may occur to plastic components.



To adjust the full flush volume, raise/lower the full flush adjustment as shown, the lower the slide is set the higher the flush volume will be. Note: The flushing valve is preset to flush 6 litres (nominal) minimum volume, when the slide is in the lowest position.

3

To adjust the part flush volume, move slide up for less and down for more

4

Place the base seal over threaded section and feed through bottom of cistern. Secure hand tight plus half a turn using back-nut supplied (using a suitable spanner). Shown below are bolted and plated kit assemblies for close coupled WC pan and cisterns.

| BOLTED KIT | PLATED KIT |
|------------|------------|
| | |

1

Insert button through cistern lid and secure hand tight using the bezel and back-nut provided. Then place the cistern lid onto the cistern. If fitting the inlet valve to the left of the cistern route the cable to the right, so that the cable does not obstruct the float of the inlet valve. (Reverse for opposite hand feed).

N.B. Style of cistern may vary from that shown.

5

For internal overflow measure from base of cistern to waterline and add 20 to 50mm. Ensure that the top of the overflow is a minimum of 10mm below any aperture in the cistern (such as fixing holes). To adjust overflow tube, slide the overflow tube clip as shown and raise/lower to suit your installation. When height is set slide the overflow tube clip back to secure. Test overflow by making the inlet valve fail, If overflow cannot cope with all incoming water, turn the isolation valve (not supplied) to reduce water flow and try again.

2

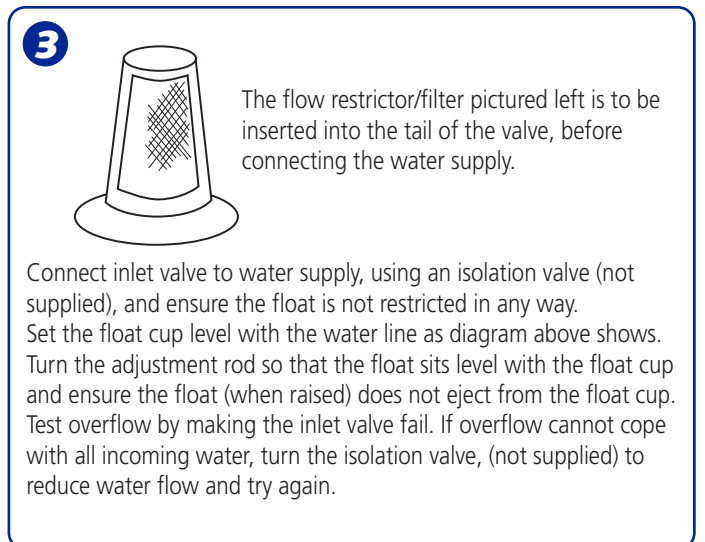
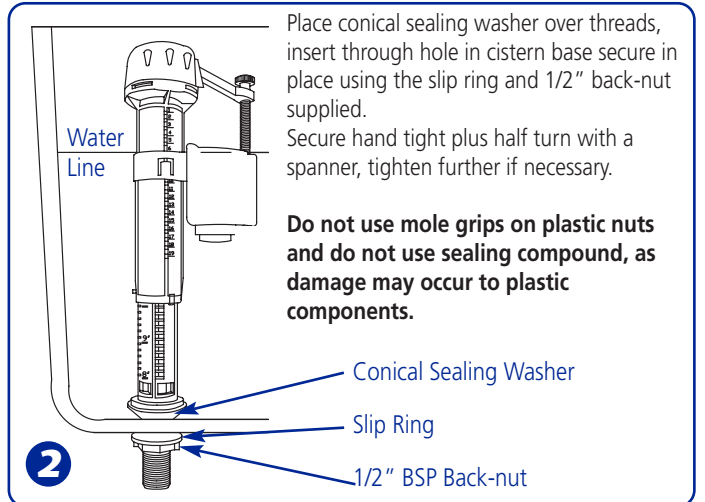
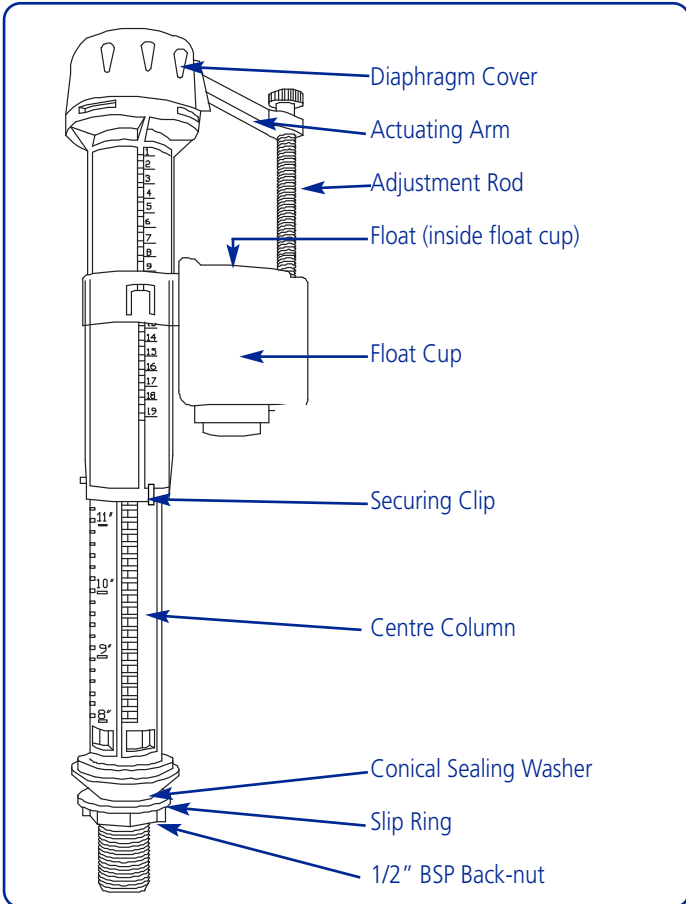
Trouble Shooting

To clean the seal (if water is leaking into WC pan), unclip the button assembly and remove cistern lid. Twist the main body of valve 1/8th turn anti-clockwise and remove, pull the stem seal off, clean with warm water, then re-fit the valve by re-inserting the 2 lugs and turn 1/8th turn clockwise and re-fit the cistern lid.

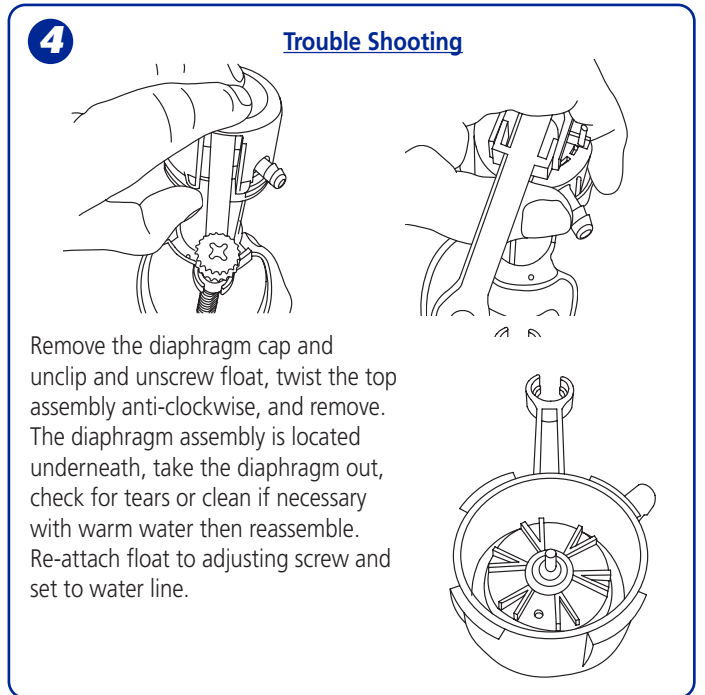
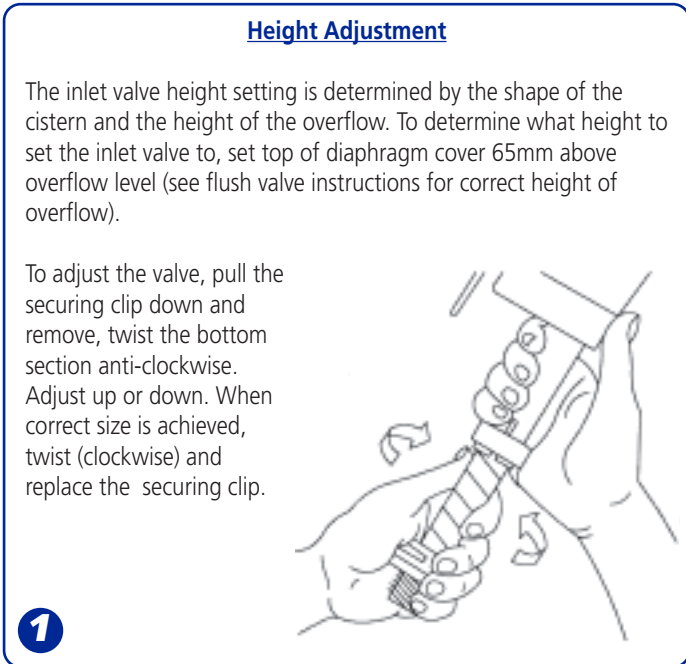
Re-check for leaks.

6

IMPORTANT – AV068 and DVA0100 FITTING PACKS ONLY
For 2" outlet hole use thick base seal washer – For 1½" outlet hole use thin base seal washer



BEFORE INSTALLING ANY INLET VALVE, IT IS NECESSARY TO FLUSH OUT LOOSE DIRT AND DEBRIS FROM THE SUPPLY PIPE (AND TANK IF DIRECT FEED), OTHERWISE THE PERFORMANCE OF THE INLET VALVE WILL BE AFFECTED.



| | |
|-----------|------------|
| Code: | PM100KAY |
| Issue No. | 01 |
| Date: | 01/07/2010 |