

40993

Earlex[®] **PRO~STEAM[®]**

OPERATING INSTRUCTIONS

Models LCS270 / LCS176



PLEASE READ THESE INSTRUCTIONS CAREFULLY BEFORE USE

Thank you for purchasing an Earlex Steam Wallpaper Stripper.
In order to obtain the best results please read the instructions *before* commencing any work. Please also make a special note of the safety rules.

EARLEX LIMITED WILL ACCEPT NO RESPONSIBILITY FOR THE USE OF THIS PRODUCT IF USED FOR ANY OTHER PURPOSES THAN THOSE DETAILED HEREIN.

RETAIN FOR FUTURE REFERENCE

Safety Rules

- Keep away from children and animals.
- Do not pull by the mains lead or the steam hose.
- Be careful of overhead dripping, when using on overhead areas tilt the steam plate away from the face and body, and regularly empty the steamplate of any collected condensation.
- Do not leave unattended.
- Do not point the steam plate at anyone.
- Do not allow water or steam to enter light switches or sockets.
- Always use and store upright.
- Always visually check that the hose and steam plate inlet are not blocked before attempting to use.
- Do not strain, kink or trap the hose under heavy objects.
- Use only 4lb pressure cap as supplied. It is also a safety valve.
NEVER BLOCK OFF THIS OUTLET.
- NEVER remove the filler cap when unit is boiling - switch off and wait for 5 minutes.
- Never use outside when raining.
- Always disconnect power supply when filling the machine or when not in use.
- Do not use any caustic cleaners on the tank.
- Do not allow to boil dry.
- Do not overfill the reservoir. DO NOT USE ADDITIVES.
- Never detach the hose whilst the unit is switched on.
- The tank becomes hot in use. Do not touch. Only move with the carrying frame.
- Steam is produced at 100°C. Wear protective clothing and gloves when operating this stripper.
- DO NOT USE THIS STRIPPER FOR ANY OTHER PURPOSES THAN DETAILED IN THESE INSTRUCTIONS.
- Under no circumstances should you attempt to repair a unit unless qualified and authorised to do so.
- Use only genuine Earlex replacement parts.

Main Features

This is a professional, fast-action steam wallpaper stripper. It has many added features;

- Each tank is individually pressure tested.
- Storage for the hose and the mains lead.
- Neon mains On/Off switch,
- Cooler running steam hose.

Caution!

Check the state of your plaster before starting work.

Steam can loosen weak, porous or poorly bonded plaster - which also loosens readily if cracked, holed or if steam plate is held in one position for too long after the paper is soaked.

Weak plaster can normally be detected by tapping a few areas of the wall. A hollow

sound indicates that you should proceed only with extreme care - stopping immediately if you hear a cracking sound or plaster starts to break loose.

The steam stripper is safe for drywall/plaster board surfaces but whatever the material, it is always wise to check a small area before starting work properly.

Protect your home!

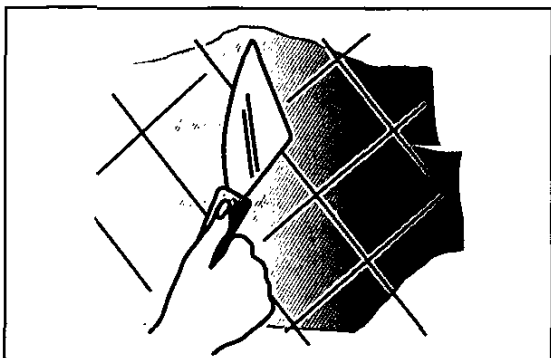
The heat generated by the boiler unit can mark carpets, soft furnishings, table tops, cabinets etc.

Dust sheets or newspapers are not suitable heat protectors for delicate surfaces.

Preparation

To achieve fastest paper removal always gently score the areas to be stripped. With heavily embossed, vinyl coated or painted papers this is essential. Either use a proprietary perforator tool or alternatively score the paper with the edge of a wall scraper in a criss-cross pattern with 150mm (6 inch) spacing.

As with all decorating work be sure to protect carpets and furniture with covers.

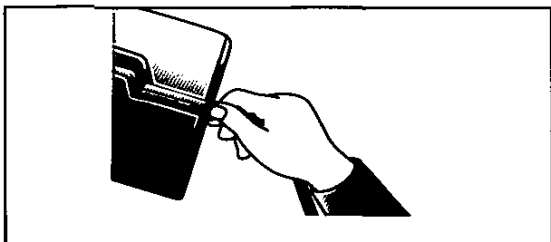


Operation

STEAM IS HOT! The unit is designed for safe, fast removal of wallpaper but you must be aware that steam is produced at 100°C so be careful, wear protective clothing and protect your hands with heat resistant gloves or mitts.

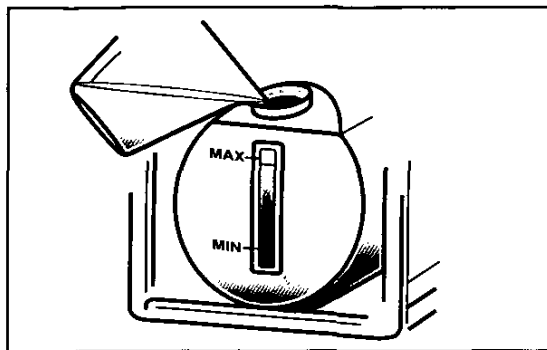
Place the unit on a flat surface near to the area to be stripped. Remove the steam plate.

FULLY UNCOIL the hose and mains lead. Connect the thread on the steam plate to the end of the hose. This only needs to be hand tight. **DO NOT OVERTIGHTEN.**



If the steam plate is fitted with a metal swivel joint, tighten hose nut to thread using two spanners. The plate can remain permanently attached to the hose thereafter.

To fill the unit, remove the filler cap and fill to the maximum water level as shown on the glass panel at the end of the tank. This must be clean water, preferably hot. **DO NOT USE ADDITIVES - DO NOT OVERFILL.**

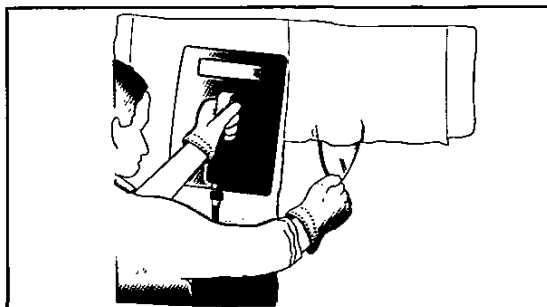


Connect the mains lead from the unit to the socket and switch on. The mains switch on the unit has a neon light and will light when the unit is on. It will take between 10 and 20 minutes for the 230V unit or 25-35 minutes for the 110V unit to start producing steam depending on the temperature of the water used. **DO NOT LEAVE UNATTENDED.**

Once steam is being produced at the steam plate you are ready to commence operation. Prior to the steam being produced a small amount of bubbling will occur at the steam plate. **WARNING:** Beware of hot water discharge prior to steam emission. When the steam has been produced, lift the steam plate above the level of the tank outlet to allow condensed steam to run back down the hose and into the tank.

If you are right handed hold the steam plate in your left hand and place flat against the wall where you wish to commence removing.

Leave the plate against the wall for approximately 10 seconds. If you are left handed you may find it easier to operate with the other hand.



Move the steam plate to the section immediately next to where you have just been working and use a wallpaper scraper to remove the section that has just been steamed. By working in this way you should be able to remove paper continually. You may have to leave the plate against the wall for longer periods with some papers or re-steam if not completely removed.

The 230V unit will operate for approximately 1 1/2 hrs and the 110V unit will operate for approximately 3 1/4 hrs before requiring refilling. The water level is shown through the glass level indicator and should not be allowed to fall below minimum. Switch the unit off when this level has been reached. If you require further use of the steamer, ensure unit is switched off and has stopped boiling. Wait for 5 minutes. Slowly turn cap anti-clockwise, any remaining trapped steam will be released from beneath cap. **Caution - steam is very hot -wear a glove and keep face clear.** Refill to the level indicator as before and follow above instructions.

YOU MUST NEVER ALLOW THE UNIT TO BOIL DRY.

There is a safety thermal cut-out device fitted to the unit. If the unit is allowed to boil dry this will operate and prevent further use. Switch the unit off and allow it to cool for at least 5 minutes, refill with water and then switch on again - the thermal cut-out should automatically re-set. If this has not re-set allow a further cooling period.

When you have finished using the unit allow any remaining water to cool and then empty the unit. We recommend flushing the tank out with clean water before storing. **NEVER LEAVE WATER IN THE UNIT WHILST BEING STORED.**

Storage

Brackets are fitted to the frame for the storage of the mains lead and hose.

To recoil - wind the mains lead onto the brackets - then wind on the steam hose ensuring adequate length of hose is left to secure the steamplate into the clips on the opposite side. The handle should face outwards - slide the plate in until tight.

Radiator Cap

To fit - screw onto the filler neck hand tight. Do not overtighten.

To remove - ensure unit is switched off and has stopped boiling. Wait for 5 minutes. Slowly unscrew the cap, any remaining trapped steam will be released from the anti-discharge valve. **Caution - steam is very hot - wear a glove and keep face clear.** Refill to the level indicator as before and follow above instructions.

STEAM IS DANGEROUS.

Other Uses

The stripper can also be used to:

- Remove Artex®.
- Lift stuck down vinyl tiles.
- Sterilise soil.
- Kill garden weeds.

TROUBLE SHOOTING

Unit Fails to Boil

- The thermal cut-out has operated. Switch off, allow to cool, refill with water then switch on again.
- Check the fuse in the plug - 230V unit only.
- If using an extension lead - check that the thermal re-set button on the extension lead has not tripped out. Check that the extension lead is rated at a minimum of 13 amps - 230V unit only.

If the unit still will not operate return the unit to the dealer or authorised agent to check the thermal fuse link and element. **ONLY QUALIFIED ELECTRICIANS SHOULD UNDERTAKE THIS WORK.**

Unit keeps cutting out

- Check that water is above minimum level.
- Check that the extension lead is rated at 13 amps minimum and fully unwound. 230V unit only.
- Check that no additives have been used.

Steam escaping from Pressure Cap

- Check for blockages in hose or steam plate.
- Clean seating around cap area.

Descaling

We recommend that the tank is cleaned every three months using proprietary descaling products, used as per the manufacturers instructions.

Spare Parts

The full range of spare parts is available from Earlex. Despatch is available same day by first class post to Companies with credit facilities or for payment by credit card.

**IF YOU REQUIRE ANY FURTHER ASSISTANCE PLEASE CALL OUR
HELPLINE ON 01483 454666**

Monday - Friday 08:30 - 18:00 (excluding Bank Holidays)

Spare Parts List and Diagram

PART NO.	DESCRIPTION	QTY		
PS 0004	Tube Connector-external.....	4	PS 0136	Glass Window..... 1
PS 0005	Tube Connector-internal.....	2	PS 0137	Glass Retaining Plate..... 1
PS 0006	C/sk Screw-Frame Joints.....	8	PS 0138	Level Indicator Ball..... 1
PS 0007	Stand/Seat Moulding.....	1	PS 0139	Screw for Retaining Plate..... 6
PS 0008/A	Steam Tank Assembly.....	1	PS 0140	Screw for Tank Joint..... 3
PS 0049	Thermal Fuse.....	4	PS 0155	Cable Assembly 110V..... 1
PS 0020	'O' Ring for Element.....	1	PS 0200	Steam Plate Buffer..... 1
PS 0021	Stud.....	2	PS 0202	Steam Plate Swivel Joint..... 1
PS 0022	Hexagon Nut.....	6	PS 0302	Switch Assy-mains with indicator..... 1
PS 0023	Shakeproof Washer.....	4	PS 0296	Short Stud for Earth Connection..... 1
PS 0027	Cable Assembly-Switch to Cut-out.....	1	PS 0301	Anti-discharge Valve (not shown)..... 1
PS 0028	Cable Assembly-Switch to Element.....	1	PS 0303	Pressure Cap Assembly-with Chain..... 1
PS 0029	Mains Cable Assy with 13 amp Plug.....	1	PS 0316	Heat Shield 1
PS 0032	Element Cover.....	1	PS 0317	Heating Element 2750W..... 1
PS 0038	Steam Hose Assembly.....	1	PS 0321	Heating Element 1760W..... 1
PS 0042	Elbow-Steam Outlet.....	1	PS 3000	Side Frame left hand..... 1
PS 0047	Steamplate Assembly (not shown).....	1	PS 3001	Side Frame right hand..... 1
PS 0048	Steam Plate.....	1	PS 3003	Handle tube..... 1
PS 0049	Adaptor-for Hose.....	1	PS 3004	Hose/Cable Clip..... 2
PS 0053	Circlip.....	1	PS 3005	Spacer Tank Mounting..... 4
PS 0055	Taper Nut.....	2	PS 3006	C/sk Screw for Clip..... 2
PS 0071	Clip for Steam Plate.....	2	PS 3014	PVC Handle..... 1
PS 0117	'O' Ring Tank Seal.....	1	PS 3037	Foot Moulding..... 4
PS 0118	Gasket Tank Window.....	1		
PS 0123	Thermostat.....	1		
PS 0124	Tank Cover - Black.....	1		
PS 0127	Lock Nut M6.....	4		
PS 0128	Protective Cover M6.....	2		
PS 0134	Stainless Steam Pipe.....	1		

Mains connection 230V UK only

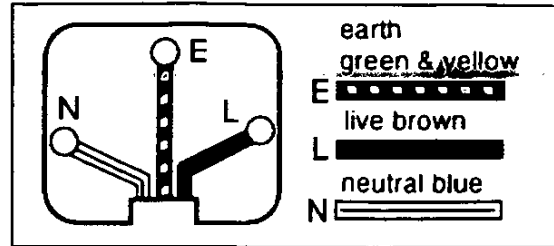
The stripper is supplied fitted with a 13 amp plug top and fuse. If a replacement fuse is required this must be rated at 13 amps. If in doubt consult an electrician.

WARNING - THIS APPLIANCE MUST BE: EARTHED. For your total protection it is recommended that a residual current circuit breaker (RCCB) should be used in conjunction with the stripper; Min. 15 amp - Max. 20 amp.

If any electrical component is damaged or faulty, it must be replaced by the manufacturer or it's appointed service agent or a similarly qualified person in order to avoid a hazard.

As the colours of the wires in the mains lead of this appliance may not correspond with the coloured markings identifying the terminals in your plug, proceed as follows:

- The wire which is coloured green and yellow must be connected to the terminal in the plug which is marked with the letter **E** or by the earth symbol, or coloured green or green and yellow.
- The wire which is coloured blue must be connected to the terminal which is marked with the letter **N** or coloured black.



- The wire which is coloured brown must be

connected to the terminal which is marked with the letter **L** or coloured red.

Mains connection 110V UK only

The stripper is fitted with a 16 amp industrial plug for insertion into a suitable transformer or generator supplying 110V a.c. outlet. If this mains cable becomes damaged it should be replaced with our Part No. PS0155.

Extension Leads 230V

If you are using an extension lead it must be rated at a **minimum of 13 amps and fully unwound**. Do not operate with a lead rated at less than 13 amps as this will cause premature failure of the element which is not covered by guarantee.

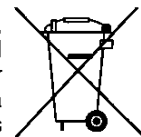
EC Declaration of Conformity

We declare that the units: LCS conform to: 73/23/EEC, BSEN60335-2-54 & 89/336/EEC, EN55014-1, EN55014-2, EN61000-3-2, EN61000-3-3

Tim Hopper -Technical Director

Information on the disposal of waste electrical equipment known as WEEE:

Your attention is brought to new directives applicable to the disposal of this electrical equipment, where in accordance with the legislation this product must not be disposed of in your normal household waste. Instead it is your responsibility to dispose of this type of waste by handing it over to special designated collection points for recovery and recycling. This product is marked with a 'Wheelie bin' symbol with a cross on it to remind you of this action. The objective of this directive is to help conserve resources and ensure that it is recycled in a manner that protects human health and the environment. For more information about where you can drop off your waste please contact your local authority, take back facilities are free of charge.



GUARANTEE

This product is guaranteed for a period of 2 years for ordinary use and 6 months for hire purposes or where the unit is lent to other users. The tank is guaranteed against corrosion for 3 years. The guarantee is against faulty materials or workmanship.

Whilst every possible care is taken by Earlex to ensure that our products leave the factory in good working order, Earlex cannot under any circumstances accept liability for problems or damage caused by their subsequent use. It is the responsibility of the user to ensure that surfaces to be treated, cleaned or stripped are suitable for steam.

This guarantee does not affect your statutory rights.

In the event of a fault occurring please contact our helpline before returning the unit to our Service Department at the address below together with a copy of your purchase receipt. All repairs will be dealt with speedily.

If the guarantee card is not returned within 14 days from the date of purchase the guarantee is limited to date of product manufacture.



Earlex Limited, Opus Park, Moorfield Road, Guildford, Surrey GU1 1SZ. UK.
Tel: 01483 454666 Fax: 01483 454548
E-mail: enquiries@earlex.co.uk
Website: www.earlex.co.uk