

# VOLEX

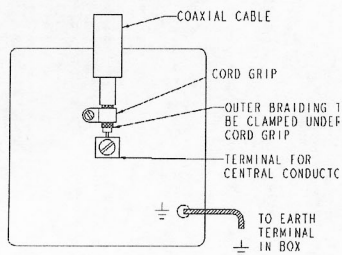
## DECORATIVE Wiring Accessories

DL21920/D - SF

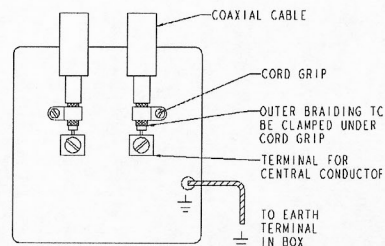
### Fitting and wiring Instructions –

- 1) Before commencing work switch off the power supply by removing the fuse in the fuse box, or switch off circuit breaker in the consumer unit.
- 2) If unit is to be used as a replacement for an existing product, remove existing unit from its location and disconnect the wiring.
- 3) Certain items in the range will not fit into a 4 lug box. If such a box has been previously installed the North South lugs should be removed or bent back to avoid contact with the interior.
- 4) Connect the wires as shown in appropriate wiring diagrams below and overleaf. Use green/yellow sleeving on earth conductors not insulated. Ensure terminals are properly tightened and no bare wire is visible. Push back units into mounting box making sure conductors are not trapped.
- 5) Screw the unit to the mounting box, do not over tighten fixing screws.
- 6) To reduce the risk of discolouration or tarnishing, avoid installation on wet plaster.
- 7) These products must be installed in accordance with the latest Building and IEE wiring regulations. If in any doubt, please contact a qualified electrician.

#### 1 GANG COAXIAL SOCKET



#### 2 GANG COAXIAL SOCKET



#### SECONDARY TELEPHONE OUTLET

Secondary sockets are for adding extensions. These may be from a Master socket or from another Secondary socket. The procedure is the same for both arrangements.

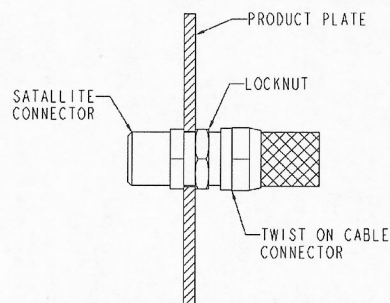
On the reverse side of the socket there are two rows of 3 terminal/connectors. Connectors 2, 3, 4 and 5 on the Master socket are connected to connectors 2, 3, 4, and 5 on the Secondary socket using 4-core telephone cable. To attach the wires to the connectors, remove 10mm of inner insulation double over bare wire and insert into terminal: do not over tighten terminal screws. Ensure the same colour wire is used for the same terminal in each socket.

Using a green/yellow sleeved copper wire the earth terminal on the plate should be connected to the earth terminal in the mounting box.

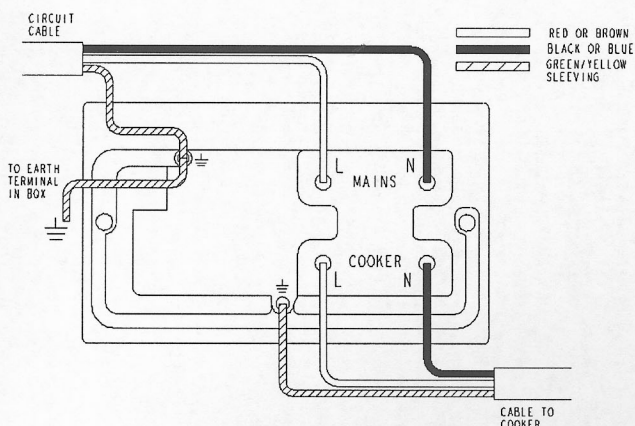
#### MASTER TELEPHONE OUTLET

An authorised engineer should only install Telephone Master sockets.

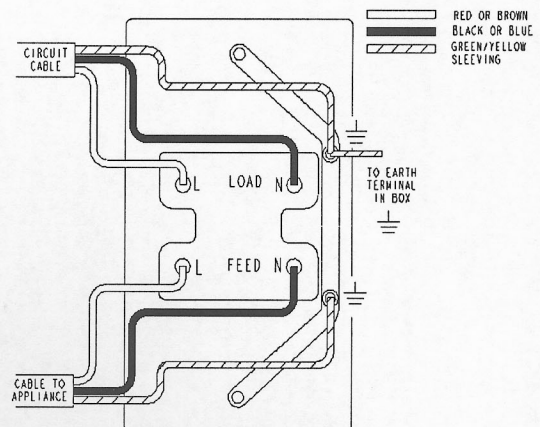
#### SATALLITE CONNECTOR ASSEMBLY



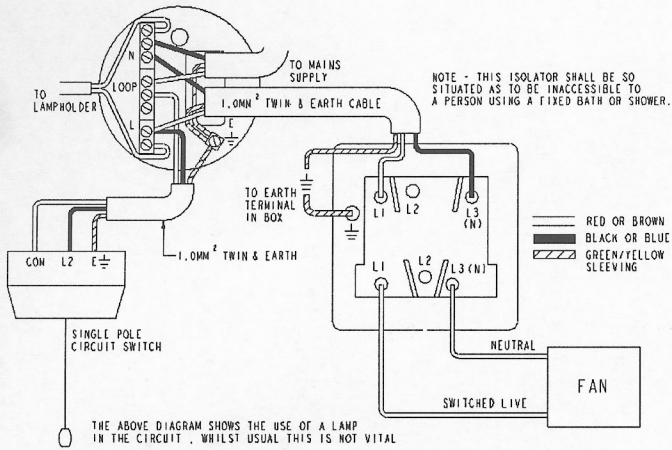
#### 45A COOKER CONTROL UNIT



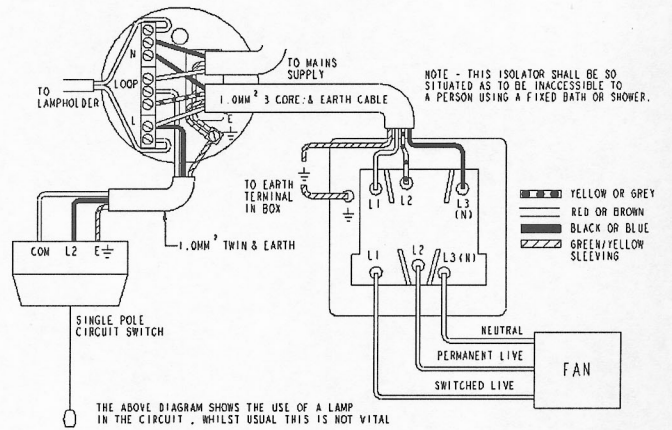
#### 45A D.P. SWITCH



## 10A TRIPLE POLE FAN ISOLATOR WITHOUT TIMER

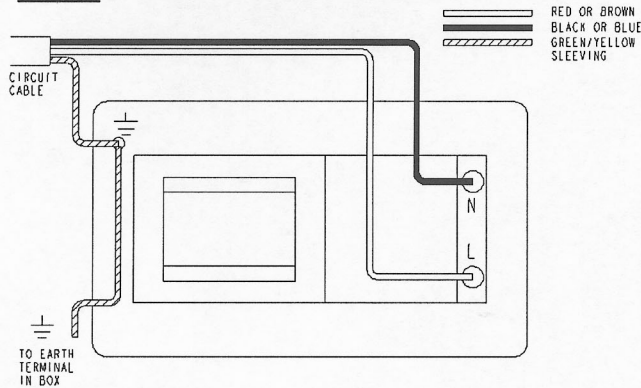


## 10A TRIPLE POLE FAN ISOLATOR WITH TIMER

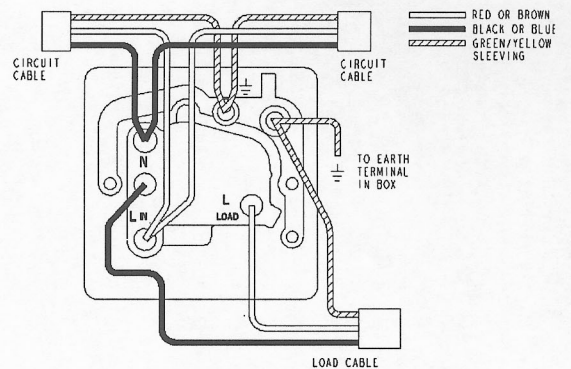


## SHAVER UNIT

**IMPORTANT - THIS CIRCUIT MUST BE PROTECTED BY A 5A FUSE**



## 13A UNSWITCHED FUSED CONNECTION UNIT



ELECTRIUM SALES LIMITED, Commercial Centre, Lakeside Plaza, Walkmill Lane, Bridgetown, Cannock, Staffordshire, WS11 OXE.

Telephone: 01543 455033. Facsimile: 01543 455011