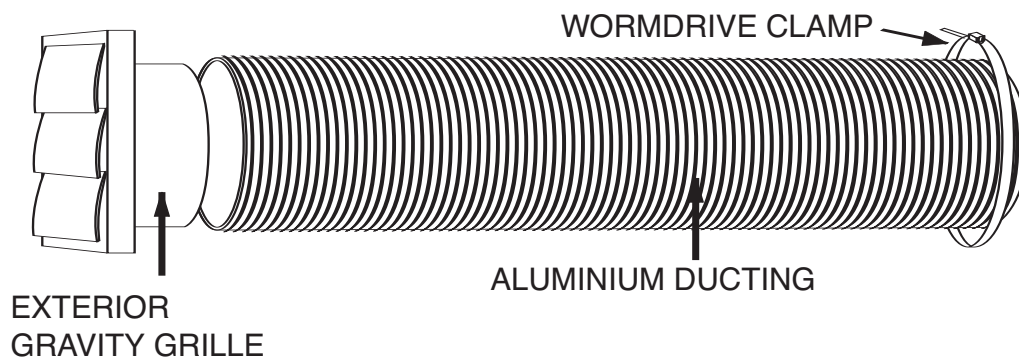
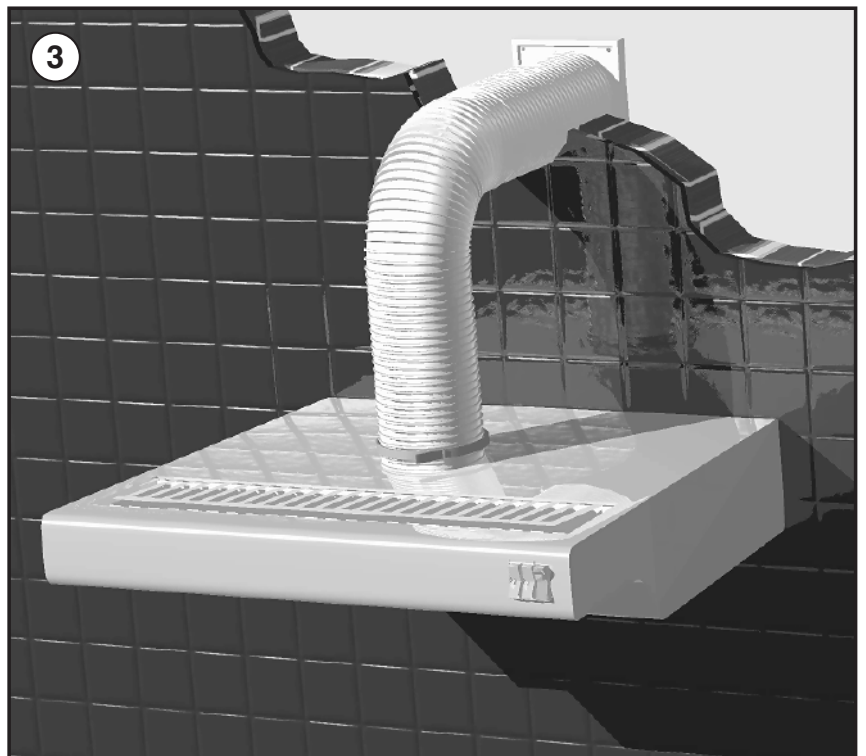
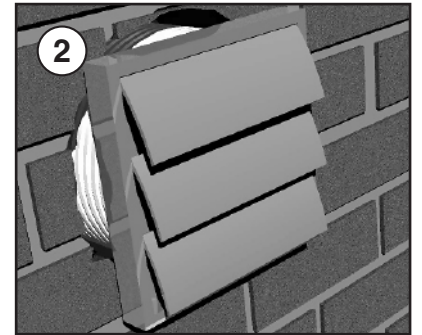
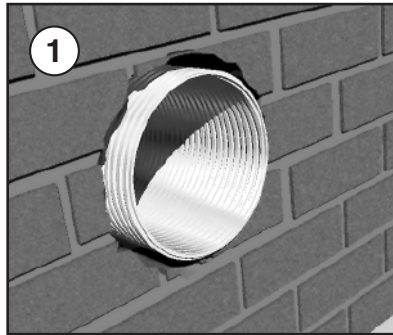


Cooker Hood Venting Kit Fixing Instructions

1. Select a suitable position in an external wall for your cooker hood venting outlet. Prepare a hole through the wall. See diagram 1. Hole sizes: 112mm hole for the 100mm kit. 140mm hole for the 125mm kit.
2. Pre form the ducting carefully and extend to its full length, or to the length required, so that it reaches from the top of the cookerhood to the outside wall. Make good around the grille if necessary. Secure the grille over the outlet with the 4 screws and wall plugs provided. See diagram 2.
3. Make good around the inside if necessary and allow to set. Connect the free end of the ducting to the cooker hood discharge spigot (as supplied by manufacturer) and secure with the metal worm drive clamp provided. See diagram 3.



CE